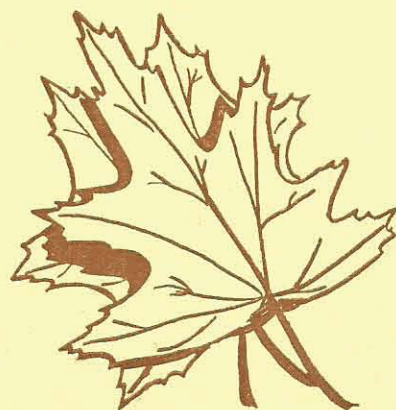
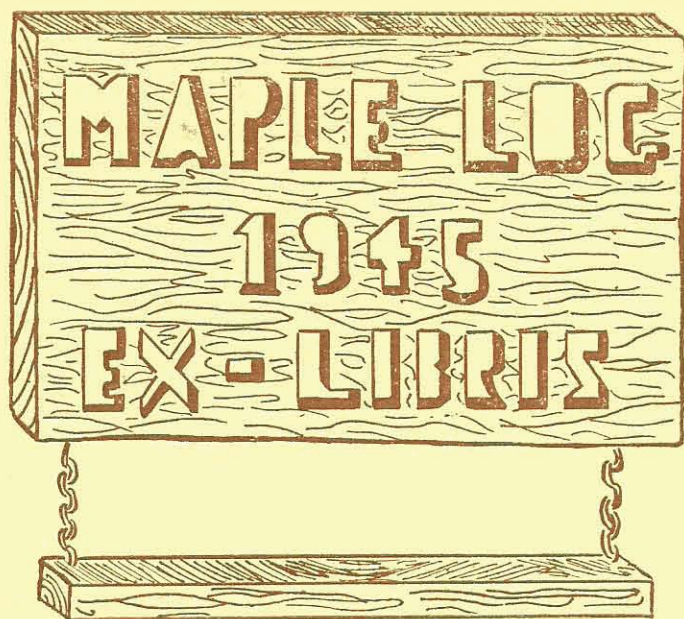




MAPLE
LOG
'45



The
MAPLE LOG
for
1945

Published by
The Student Body
of
MAPLEWOOD ACADEMY



*Of these friends
we have
reason to be proud . . .*



SERVICE ROSTER

Anderson, Algon
Andreason, Ted
Ashton, Charles
Auge, Alvin
Bakke, Robert
Barnhart, Burdette
Barnhart, Rolland
Bartell, Glen
Berg, Orville
Bergvall, Charles
Bergvall, Melvin
Berlin, Einar
Beyer, LeRoy
Beyer, Raymond
Blank, Joe
Blank, Wilmer
Blumenshein, Donald
Bolden, Oliver
Bolduc, Oliver
Borgen, Al
Buckley, Jim
Burgeson, Larry
Cain, Darrel
Carnham, Clarence
Carter, Wesley
Chaffee, Arthur
Chaffee, Clayton
Compton, Mervin
Cornforth, Daniel
Courtney, Bill
Crooks, Harry
Dakken, Thomas
Dale, Rodney
Dale, Wilbert
Davis, George
Davis, Mercer
DeBolt, Bill
Dedeker, George
Dennis, Rudyard
Deters, Joe
Dickinson, Kent

Dickinson, Mark
Dudley, Paul
Englehart, Alva
Englehart, Bernard
Erickson, Alden
Falbisaner, George
Firth, Robert
Ford, Wendell
Fowler, Milo
Franklin, Clark
Franklin, Donald
Franklin, Gordon
Fredricksen, Maurice
Fredricksen, Milton
Fredrickson, Ray
Goude, Gordon
Green, Henry
Grace, Leonard
Hanson, Jack
Hebbel, John
Hendrickson, Jay
Hershey, Ronald
Hurlbert, Clyde
Johnson, Clifford
Kaiser, William
Kirk, Stanley
Kisor, Wesley
Koenig, Bill
Lantry, Jay
LeBard, Ned
LeBard, Waverly
Lockert, Lloyd
Lund, Richard
Madsen, Lorrin
Martin, Ralph
Martinson, Elmer
Merickel, Charles
Merickel, Robert
Miller, Jim
Nelson, Arden
Nelson, Guy

Nelson, Louis
Nelson, Percy
Nielson, George
Nielson, Regie
Olson, Rolland
Ortner, Edgar
Osborne, Lloyd
Pittelkow, Clarence
Pogue, Preston
Pogue, Clayton
Quance, Harvey
Richardson, Sam
Roberts, Lloyd
Roderick, Bob
Reynolds, Don
Sansam, John
Saunders, Robert
Schmidt, Lyle
Senne, Burrill
Senne, Horace
Stickney, Ervin
Stickney, Glen
Strand, Fobian
Struck, Gordon
Swanson, Elmer
Thayer, Merrill
Tomeraasen, Theron
Uphoff, Frank
Vail, LeRoy
Waggoner, Lee
Waggoner, Sharon
Wahlen, Chester
Wahlen, Kenneth
Wahlen, Vernon
Wilcox, Doris
Windhurst, James
Wresch, Richard
Woods, Norman
Zima, Jack
Zummach, Kenneth



In Recognition

"Go ye therefore into all the
world and teach all nations."

Today, in a manner unthought of a few years ago and to an unprecedented extent, the young people of Maplewood, now in the service, are fulfilling this commission of Christ. Standing firm and true to the principles of God and the traditions of their school, they march fervently onward in the service of God and country. To these, our friends of dauntless courage and steadfast faith, who are striving so nobly for truth and freedom, we take great pride in dedicating the MAPLE LOG of 1945.



Foreword

A
full en-
trance into
the duties and
opportunities of
life here and the
joys of life hereafter de-
mands early training of all
three major components of
Life—MIND—SOUL—BODY.

It has been the aim of the staff
to represent, between the covers
of this MAPLE LOG, the triangular
training plan of Maplewood Academy.

Contents . . .

Introduction

Title Page

Service Roster

Dedication

Foreword

Book I

Administration

Classes

Book II

M.C.C.

Exercise and Play

Industries

Book III

Religious Activities

Book IV

Dormitories

Music

Church School

Publications

Snaps

Stanley Skadsheim, Editor

R. A. Strickland, Business

Dean Christensen, Advertising

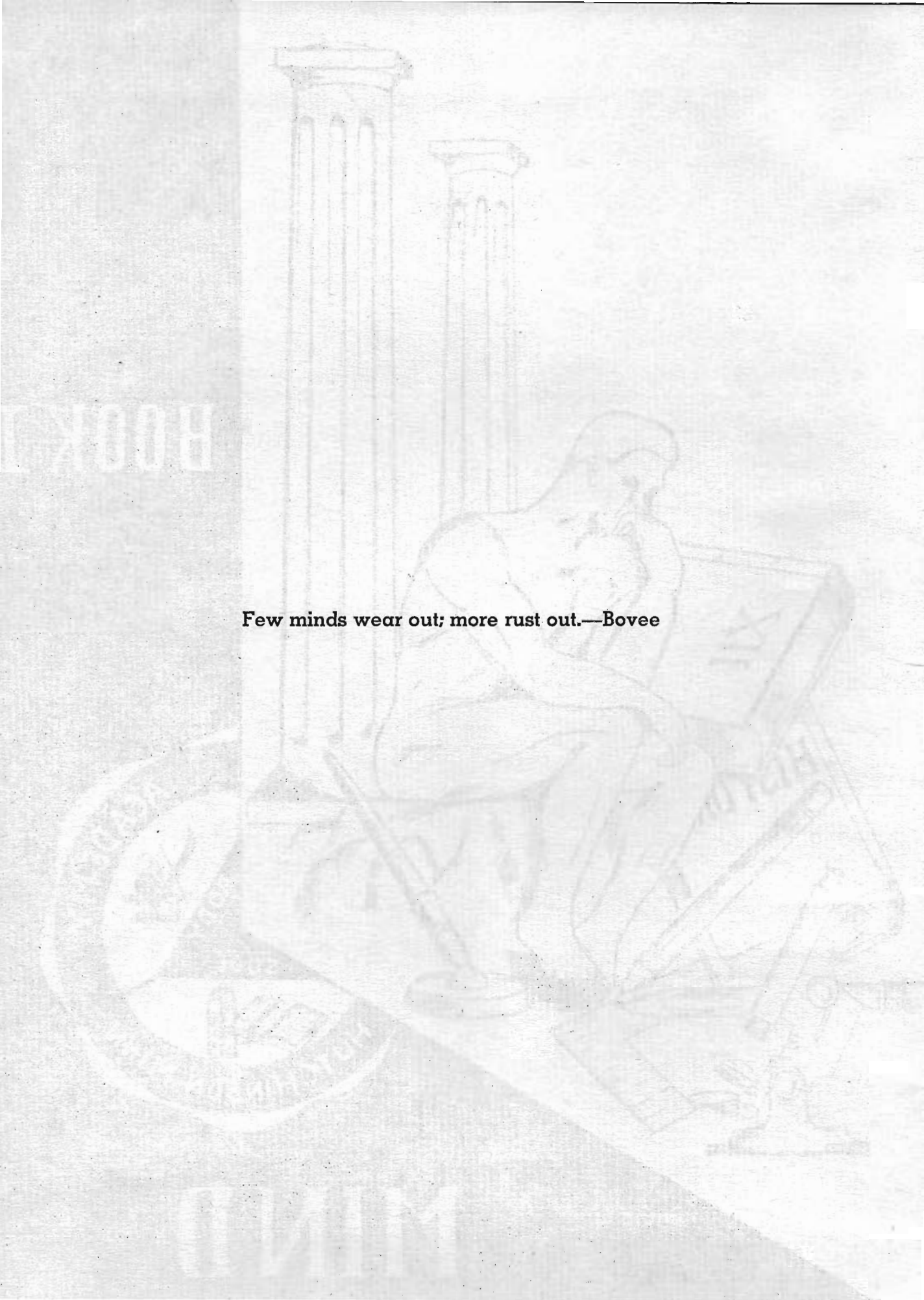
Dwain Ford, Circulation

Standish Hoskins, Advisor

BOOK I



MIND



Few minds wear out; more rust out.—Bovee



D. J. Bieber, B.A., Union College; University of Minn.

A Meesage from the Superintendent . . .

Congratulations to the class of '45 in whose honor this MAPLE LOG is published. You have been blessed both in numbers and in quality—in numbers, you are one of the largest classes in the history of Maplewood, and in quality you have the stuff to make a class count. Your leadership has been a challenge and inspiration to students and teachers. May God continue to prosper and direct you as you follow in the path you have chosen at Maplewood.

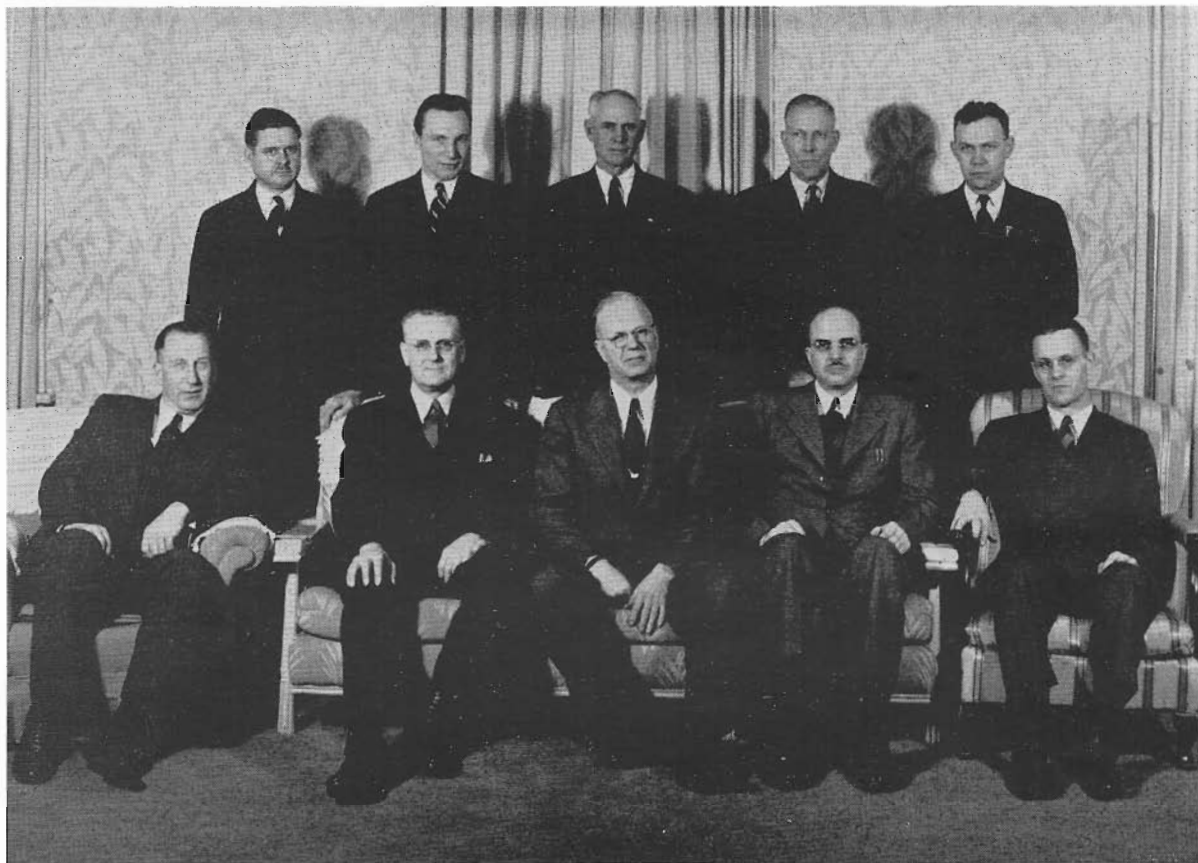
Congratulations to you lower classmen. You have done well in choosing Maplewood as your school. It remains your task to follow your leaders, the seniors of this year. We are counting on you to carry forward the spirit of this school to those new students who are planning to attend Maplewood.

Congratulations to you young people who are planning to attend Maplewood in the years to come. Your plans will be blessed of God. Maplewood is happy to invite you to become her sons and daughters.

Congratulations to you parents of the young people in the state of Minnesota. We thank you for the spirit of loyalty to your school. We thank you for the vision you possess for your boys and girls. Maplewood offers untold opportunities for your young people; may you not deprive them of these opportunities. Their future lies in your decision for them. Your school is waiting for them. Give them a fair chance.

Our Board . . .

and



FRONT ROW

E. R. Colson
Secretary-Treasurer of Minnesota
Conference
1854 Roblyn Ave.
St. Paul 4, Minnesota

Eld. K. L. Gant
Ed. Secy., Northern Union
501 Forest Ave.
Minneapolis, Minnesota

C. V. Anderson, Chairman of the Board
President of Minnesota Conference
1854 Roblyn Ave.
St. Paul 4, Minnesota

Eld. M. V. Campbell
President of Northern Union Conf.
501 Forest Ave.
Minneapolis, Minnesota

D. J. Bieber, Secy. of Board
Supt. of School
Maplewood Academy
Hutchinson, Minnesota

BACK ROW

R. H. Hartwell
Pastor of First English Church
3629 Park Avenue So.
Minneapolis 8, Minnesota

Carl Sundin
Pastor
925 East 7th
Duluth 5, Minnesota

Charles Merickel
Farm
Mapleton, Minnesota

C. E. Christensen
Salesman
47 McLeod Avenue
Hutchinson, Minnesota

W. A. Howe
Educational Supt. of Minnesota
Conference
1854 Roblyn Avenue
St. Paul 4, Minnesota

NOT IN PICTURE

W. L. Barclay
Home Missionary and Sabbath School
Secretary of Minnesota Conf.
St. Paul 4, Minnesota

Dr. E. C. Mitchell
Medical Doctor
Mound, Minnesota

F. J. Nenno
Income Tax Officer
Mankato, Minnesota

Dr. C. J. Martinson
Medical Doctor
Wayzata, Minnesota

J. W. Christian
Pastor
924 8th Avenue S. E.
Rochester, Minnesota



Arthur Axelson, B.A., M.A.
Bible

Hutchinson Theological
Seminary
University of Nebraska
Iowa State College
S.D.A. Theological Seminary

Lois J. Walker, B.A., M.A.
English, Librarian

Canadian Junior College
Emmanuel Missionary College
University of Nebraska

Paul Ford, B.A.
Chemistry, Mathematics, Craft
Shop Supt.

Emmanuel Missionary College
Iowa State Teachers' College
University of Minnesota
University of Oklahoma

Our Faculty

R. A. Strickland, B.A.
Accountant, Commercial

Pacific Union College
University of Minnesota

Mrs. R. A. Strickland
Registrar, Commercial
Pacific Union College

D. E. Davis, B.A.
Physics, Biology, Maintenance
Emmanuel Missionary College

Ervin L. Sorensen, B.A.
Music Instructor

Union College
Pacific Union College
MacPhail School of Music



Under Appointment to . . .

Academia Adventista
Hispanoamericana
Apartado 1320
San Jose, Costa Rica



Ruth M. Ingram, B.A.
Dean of Girls, Spanish
Emmanuel Missionary College
University of Chicago



**Wilbur Holbrook, B.Th., B.A.,
M.A.**
Dean of Boys
M.C.C., History
Pacific Union College
University of Wisconsin
S.D.A. Theological Seminary



Leota Gibson, B.A.
Matron
Union College
University of Minnesota

From These . . .

Mrs. Melvin Hill, B.A.
Piano, Violin

Emmanuel Missionary College

Mrs. Standish Hoskins
Piano, Secretarial

Walla Walla College

Standish Hoskins, B.Th.
French, History

Southern Missionary College
Washington Missionary
College
Walla Walla College

**Mrs. Anna P. Edwardson, R.N.,
B.A., M.A.**
Health Education

Loma Linda School of Nursing
University of Redlands
University of Washington





Everett D. Kirk, B.A.
Agriculture, Farm Supt.
Union College
University of Nebraska
University of Minnesota

Mrs. G. W. Curry, B.A.
Home Economics, Specialty
Binder
Emmanuel Missionary College
University of Wisconsin

G. W. Curry
Bindery Supt.
University of Nebraska

We Learn

Mrs. Bessie Dickinson
Laundry Supt.
St. Cloud Teachers College

Leland Torkelsen
Bindery Salesman

Hartley Berlin
Assistant Farm Manager

Miss Ruth Russell
Bindery Assistant





F
A
C
U
L
T
Y



F
R
O
L
I
C
S





L
I
B
R
A
R
Y

Study and Instruction
Unite in
Learning



C
L
A
S
S
R
O
O
M



Front Row: Helen Sorensen, Nettie Russel, Delores Christensen, Margaret Roos, Lillibelle Osvold, Leota Gange, Margaret Cowell, Kathryn Barnhart.

Center Row: Ardythe Tomeraasen, Lois Parry, Wanda Axelson, Elaine Jacobson, Joyce Zummach, Betty Zuberbier, Elaine Magdanz, Betty Bossert, Betty Horn.

Back Row: Donald Dailey, David Sheppard, Charles Cowell, Dean Johnson, Arthur Skibsted, Paul Dickinson, Norman Burt, Roy Larsen, John Ostgard.

Freshman Class . . .

Officers . . .

Treasurer, Paul Dickinson
Vice-President, Margaret Roos
President, David Sheppard
Sergeant-at-Arms, Elaine Jacobson
Secretary, Dean Johnson



Coming out . . .

Program of—

Readings . . . Speeches . . . Music
Mr. Kirk sponsoring





**Dean Holbrook Sponsors Feed
For Illustrious Sophomores.**



Officers . . .

Vice President, Perle Lockert
President, Harry Johnstone
Secretary, Elaine Thompson
Sergeant-at-Arms, Dwain Merickel
Treasurer, Charles Christensen

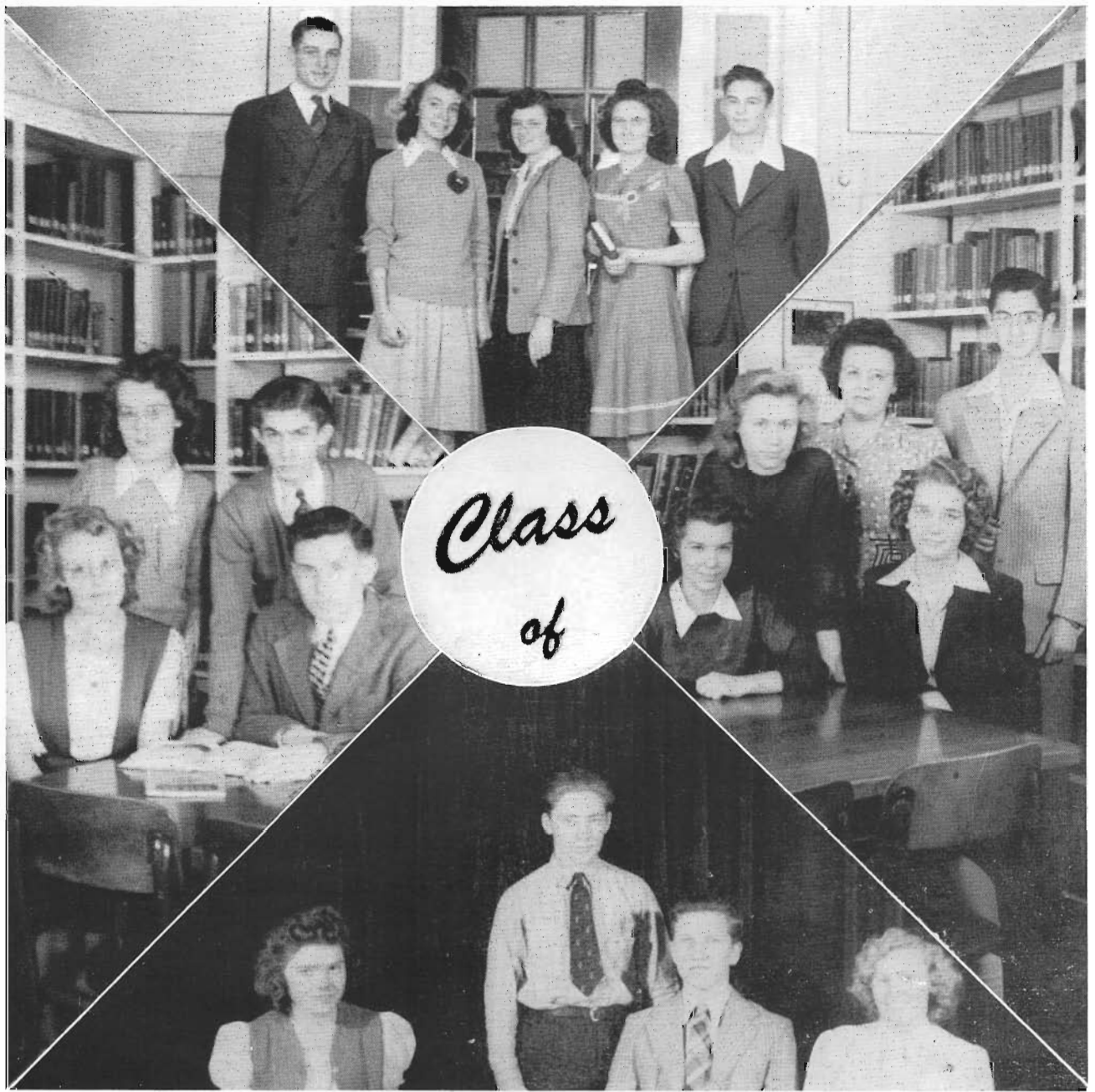
Sophomore Class . . .

Front Row: Beverly Wykoff, Perle Lockert, Georgia Murphy, Gladys Osvold, Ramona Dahlquist, Claire Berke, Jeanene Smith, Grace Bergvall, Marjorie Owens.

Center Row: Ramona Morisset, Juanita Harper, Milton Burghart, Donald Howe, Robert Ley, Clayton Johnson, Vernon Hanson, Bradley Jones, Elaine Thompson, Florence Musta, Elmer Unterseher.

Back Row: Arthur Carlson, David Zummach, Robert Blom, Silmer Skibsted, Loyle Blom, Dwain Merickel, Earl VandeVere, Harry Johnstone, Charles Christensen, Herbert Smith, Norman Osvold.





Junior Officers . . .

Betty Jo Syvertson
Michael Musta
Delores Stropp
Stuart Nelson

President, Elmer Merickel
Vice-Pres., Maurine Strom
Secretary, Junevieve Denler
Treasurer, Dorothy Russell
Sgt.-at-Arms, Charles Dammen

Evelyn Kaldahl
Lois Nelson
Paul Zummach
Phyllis Tomeraasen
Mabel Saunders

Anne Berggren
Joseph Hanson
Gerald Gelford
Mary Jean Long

And Loyal Class Members

Serena Hanson
Herbert Senne
Eugene Hanson
Phylis Larsen

Arthur Hanson
Mable Brown
Grace Steiner
Lucille Kaldahl

Patricia Erwin
Verna Roberts
Patricia Carter
John Davis

Jeanette Christensen
Terry McDonald
Avis Mueller
Betty Lou Sorensen



Junior Life . . .

Motto: Today we follow; tomorrow we lead.

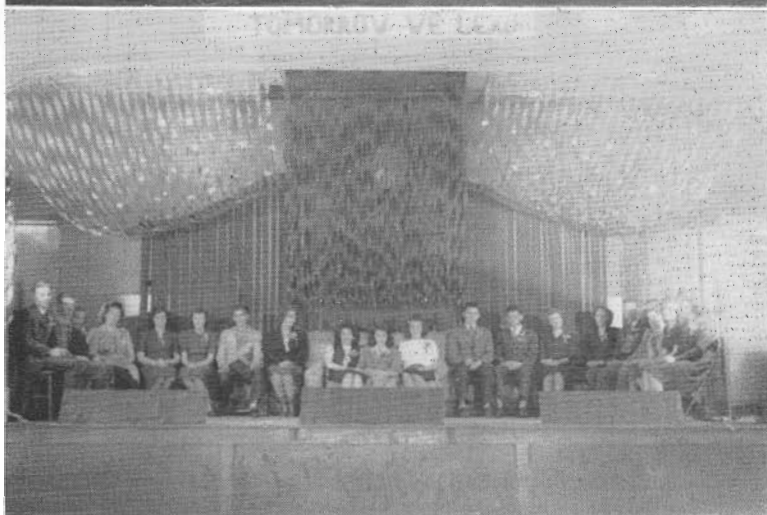
Colors: Red, White, and Blue



The Officers

Preside . . .

over



Traditional

Coming Out.



Warming up

early to win

that Junior-

Senior ball game.

The Seniors of . . .

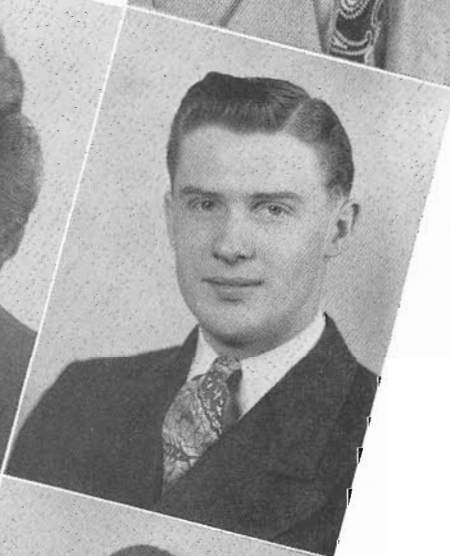
'45

Arthur Kaldahl, President
Bejou, Minn.
M.C.C. Pvt. . . . Honor Ten



Gladyce Erickson, Secretary
Brainerd, Minn.
K.D.L. Pres. '45 . . . Northerner
Associate Editor '45 . . .
Prayer Band Leader
'44, '45 . . . Crescit Eundo
Treas. '44 . . . Honor Ten

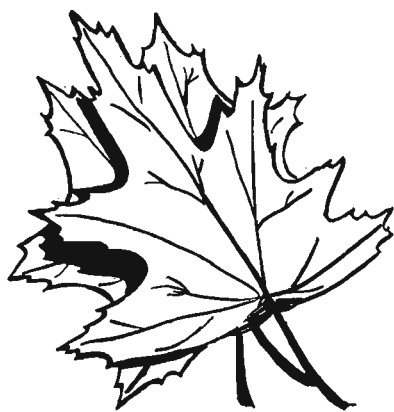
Truxton Blanchard, Vice-Pres.
Austin, Minn.
M. C. C. Sgt. . . . Band Pres. . . .
Choir . . . Maple Log
Activity Editor '45 . . . Knights
of East Hall President '44 . . .
Prayer Band Leader '44



Charles Erickson, Pastor
Long Prairie, Minn.
Prayer Band Leader '44, '45

Philip Roland, Sgt.-at-Arms
Bayport, Minn.
M.C.C. Pfc. . . . Prayer Band
Leader '44

Marian Zummach, Treasurer
Hutchinson, Minn.
Northerner Secy.-Treas.
'44, '45 . . . Co-Salutatorian



Motto . . .

Our Field
is the
World

Dwain Ford
Hutchinson, Minn.
M.C.C. Pvt. . . . Band . . .
Maple Log Circulation Mgr.
'45 . . . Co-Valedictorian

Donna Livingston
Fairmont, Minn.
Northerner Reporter '45 . .
Co-Valedictorian



Tam Martin
Sauk Center, Minn.
Seminar Leader . . . Choir . . .
Colporteur Club Vice-
Pres. . . . W.M.C. Cpl. . . .
K.D.L. Pres. '44, '45 . . .
Northerner Reporter '44 . . .
Co-Salutatorian

Arlene Nelson
Boulder, Colo.
W.M.C. Cpl. . . . Choir . . .
Band . . . Girl's Sextette . . .
Honor Ten

Doris Zuberbier
Badger, Minn.
Honor Ten

Richard McKellip
Fairbault, Minn.
M.C.C. Pfc. . . . Knights of East
Hall Athletic Secy. '45

Mildred Vallentin
Brainerd, Minn.
Choir . . . K.D.L. Secy.-Treas.
'45 . . . Prayer Band
Leader '45

Marian Larson
Minneapolis, Minn.
W.M.C. Pvt. . . . Choir . . .
Northerner Typist '44

Dean Christensen
Pipestone, Minn.
M.C.C. Sgt. . . . Band . . .
Choir . . . Maple Log Adv.
Mgr. . . . Northerner Adv.
Mgr. '44 . . . Knights of East
Hall Treas. '44 . . . Prayer
Band Leader '44, '45 . . .
Honor Ten



Doris Berlin
Pennock, Minn.
Choir . . . Secy.-Treas . . .
Sextette . . . Northerner
Editor '44 . . . Maple Log
Copy Editor '45 . . . Prayer
Band Leader '44, '45 . . .
Honor Ten

Mark Dickinson
Hutchinson, Minn.
M.C.C. Pfc. . . . Choir . . . Maple
Log Art Editor . . .
Northerner Associate
Editor '44

William Nelson
Hutchinson, Minn.
M.C.C. Pfc. . . . Band

Patricia LaRochelle
Hutchinson, Minn.
Band . . . Choir . . . Sextette . . .
Prayer Band Leader '44

'45

Mavis Emmerson

Minneapolis, Minn.

W.M.C. Cpl. . . . Choir . . .
 Band . . . Prayer Band
 Leader '44, '45 . . . Crescit
 Eundo Secy. '45 . . .
 Northerner Associate Cir.
 Mgr. '44 . . . Maple Log
 Treas. '45

Arlee Torkelsen

Hutchinson, Minn.

Band Librarian . . . Choir
 Librarian . . . Male Quartet

Stanley Skadsheim

Hutchinson, Minn.

Maple Log Editor-in-chief . . .
 Choir . . . M.C.C. Cpl. . . .
 Northerner Proof-reader
 '44 . . . Honor Ten

Arliss Lundberg

Minneapolis, Minn.

Choir . . . Maple Log Religious
 Editor '45



Willard Zima

Minneapolis, Minn.

M.C.C. Pfc. . . . Band . . .
 Choir . . . Maple Log Class
 Editor '45 . . . Northerner
 Reporter '44

Dorothy Kaldahl

Brooklyn, Minn.

W.M.C. Cpl. . . . Band Vice
 Pres. . . . Choir . . .
 Sextette . . . Crescit Eundo
 President '44, '45 . . . Prayer
 Band Leader '44, '45 . . .
 Northerner Music Editor '44

Ruby Burgeson

Anoka, Minn.

W.M.C. Pvt.

Don Burgeson

Anoka, Minn.

Band . . . Choir Pres. . . .
 Knights of East Hall Secy.
 '44 . . . Male Quartet . . .
 Colporteur Club Secy. . . .
 Prayer Band Leader '44, 45



Lois McTaggart
Campbell, Minn.
W.M.C. Cpl. . . . Band . . .
Choir . . . Colporteur Club
Pres. . . . Prayer Band
Leader '44, '45 . . .
Northerner Associate Editor
'44 . . . Northerner Editor '45

Virgie Steiner
Anoka, Minn.
Northerner Typist '45



Aim . . .

Where Duty
Calls



June Johnson
Portland, Ore.
Crescit Eundo Vice-Pres. '44

Gladys Christensen
Dalbo, Minn.
Auburn Academy '44

Doris Baird
Hinsdale, Ill.
W.M.C. . . . Choir



Colors . . .

Navy, Blue
and White

Berniece Struck

St. Paul, Minn.

Choir . . . K.D.L. Secy.-Treas.
'44

Sylvia Nordin

Portland, Ore.

W.M.C. Cpl. . . . Choir . . .
Honor Ten



Merie Campbell

Hinckley, Minn.

W.M.C. Pfc.



Betty Bliss

Shakopee, Minn.

W.M.C. Pfc. . . . Honor Ten



Harriet Howe

Dodge Center, Minn.

Northerner Typist '44 . . .
Choir . . . Circulation Mgr.
'45 . . . Honor Ten . . .
Prayer Band Leader '45

Ervin Dedeker

Hastings, Minn.

M.C.C. Staff Sgt. . . . Northerner

Make-up Editor '44 . . .

Knights of East Hall Vice

Pres. '44 . . . Prayer Band

Leader '44, '45

Evangeline Wold

Hutchinson, Minn.

W.M.C. Pvt. . . . Choir . . . Band

Dorothy Anderson

Onamia, Minn.

Choir . . . Band . . . K.D.L. Vice-

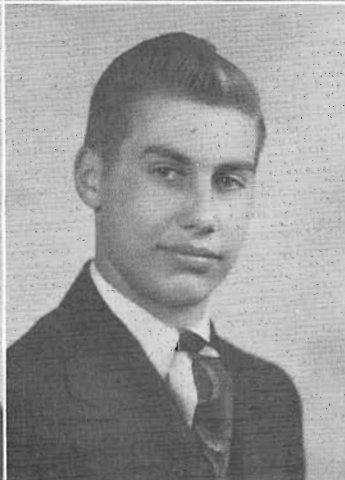
President '44 . . . Prayer

Band Leader '44

Ralph Peterson

Minneapolis, Minn.

M.C.C. Pfc.



Rosalee Myers

Minneapolis, Minn.

W.M.C. Pvt. . . . Choir

Wayne Burgess

Clam Falls, Wis.

M.C.C. Pvt. . . . Band

Vernon Wenzel

Oak Park, Minn.

M.C.C. Pvt.

Evelyn Hansen

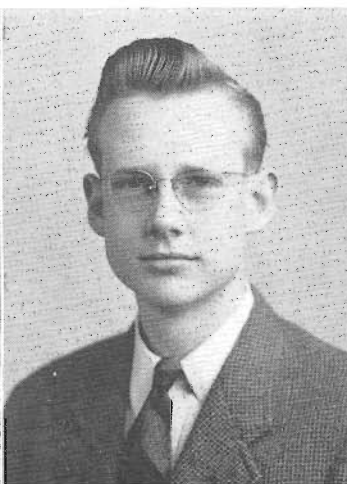
St. Paul, Minn.

Choir . . . Northerner typist
'45

Returning
to be
Graduated



June Johnstone
Union College
Lincoln, Nebr.

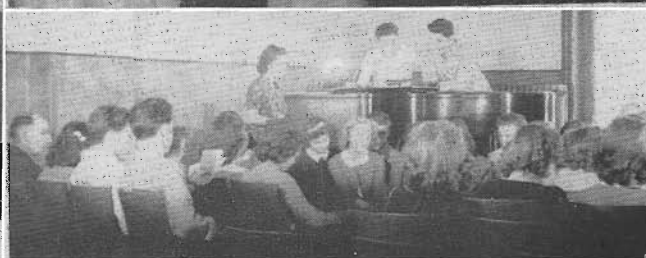
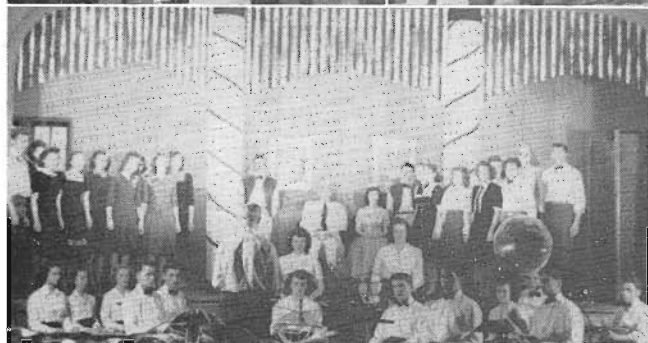
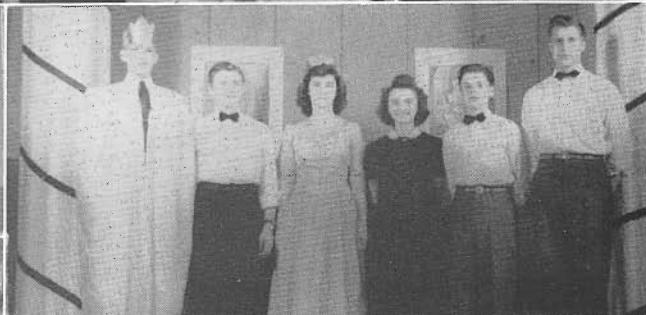


Gordon Engen
Union College
Lincoln, Nebr.



Mardelle Burgeson
At home
Austin, Minn.

SENIOR SNAPS



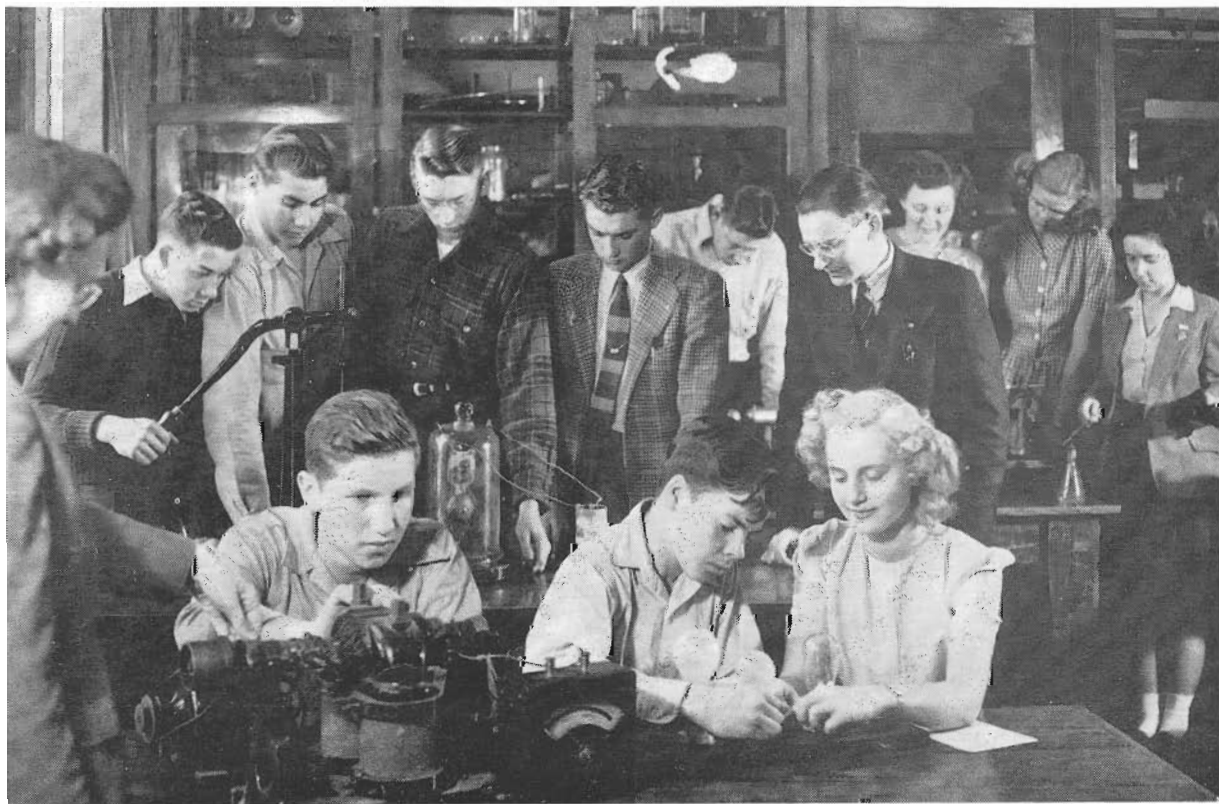
The Royal Court . . . and dignified Couriers

C
H
E
M
I
S
T
R
Y



Experience . . .

The Best Teacher



P
H
Y
S
I
C
S

How fast
can you
take it?



From Business Training

The Practical Arts . . .

To Practice in Home-making

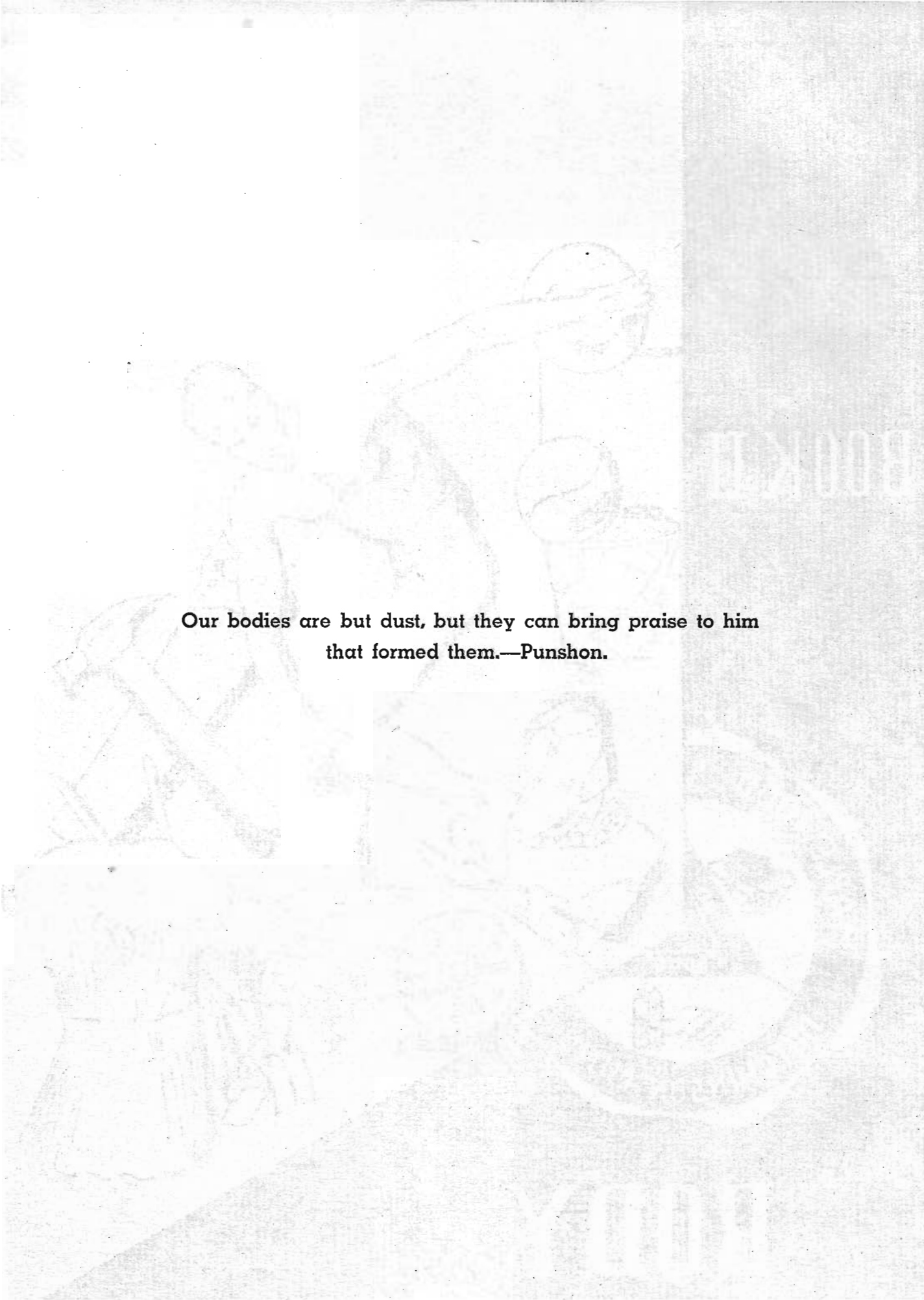
Nice clothes cost less this way.



BOOK II



BODY



Our bodies are but dust, but they can bring praise to him
that formed them.—Punshon.

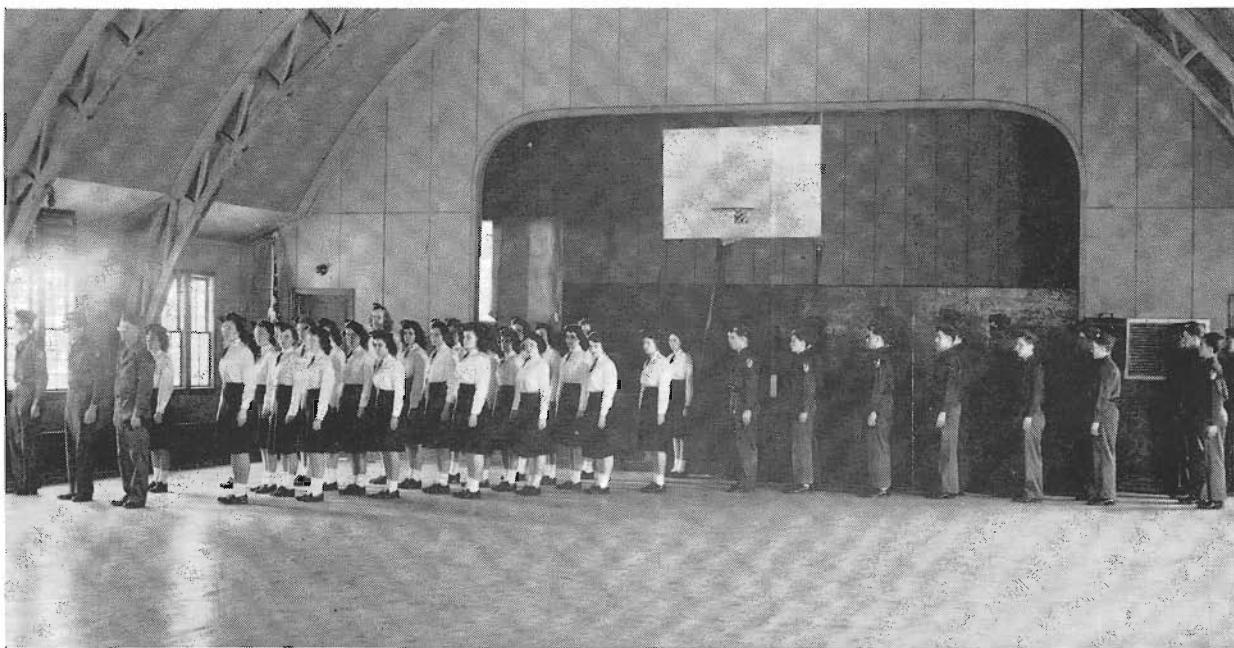
Three Times a Day

for

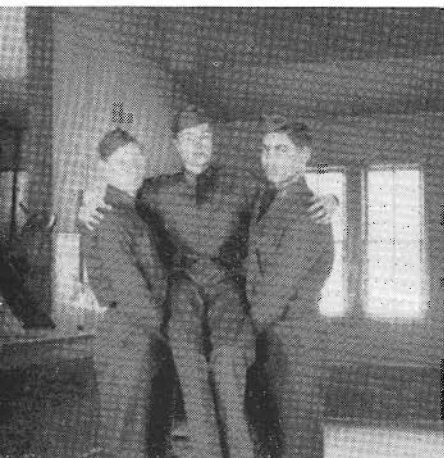
Health and Strength

OUR CAFETERIA





Company . . . Halt !



Two-Man Carry

Assist Walk



Sling

**Loading the
Litter**

Medical Cadet Corps



is
Training
for
Service

2nd Lt. Wilbur Holbrook, in Command

Staff Sgt. Ervin L. Dedeker

Staff Sgt. Michael M. Musta

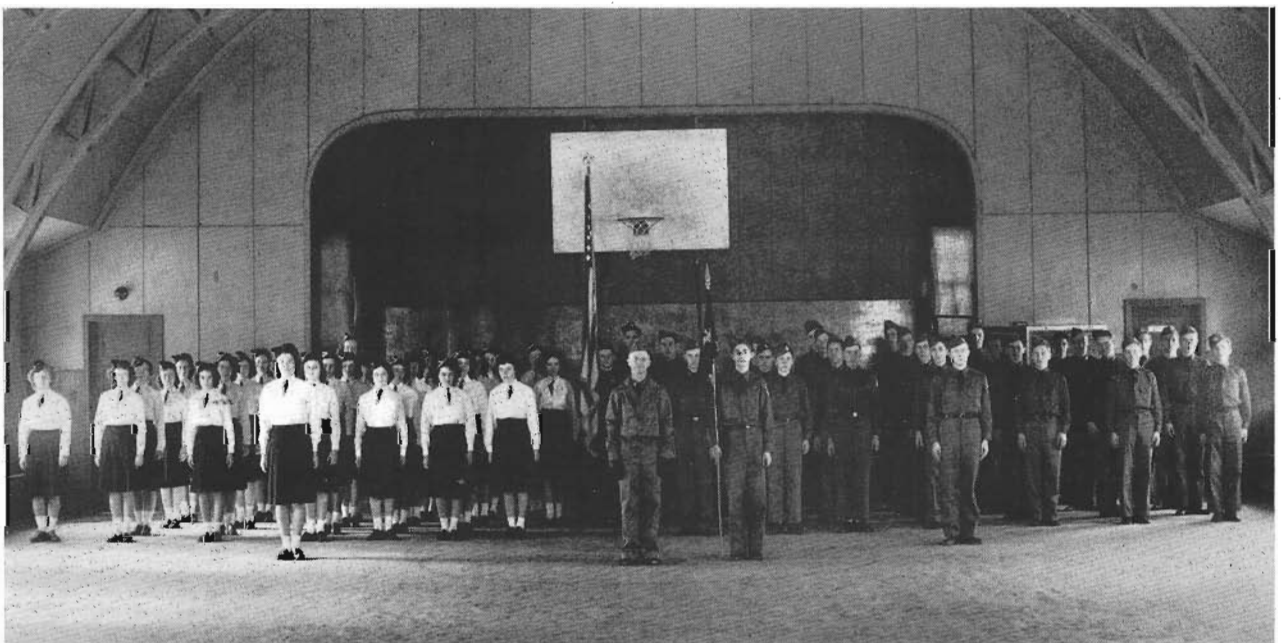
Cpl. Tillie A. Martin

Cpl. Lois I. McTaggart

Sgt. Truxton E. Blanchard

Sgt. Wilbur D. Christensen

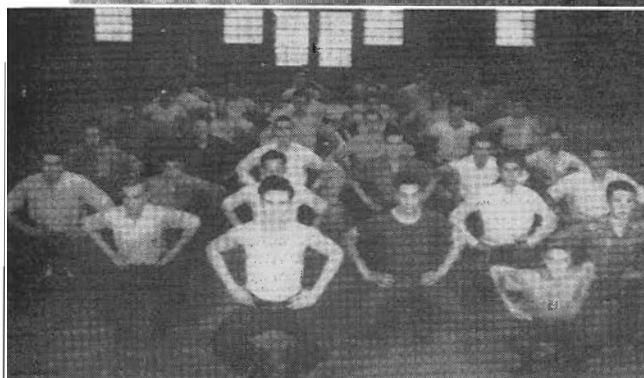
Sgt. Eugene O. Hanson



Atten . . . shun!

Sometimes . . .

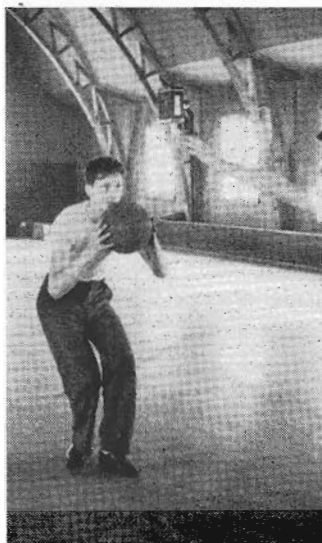
For Grace and Poise . . . We Recommend—



Building for Victory

We Play

Dead Eye Johnson



Action . . . Basket



Whizzz



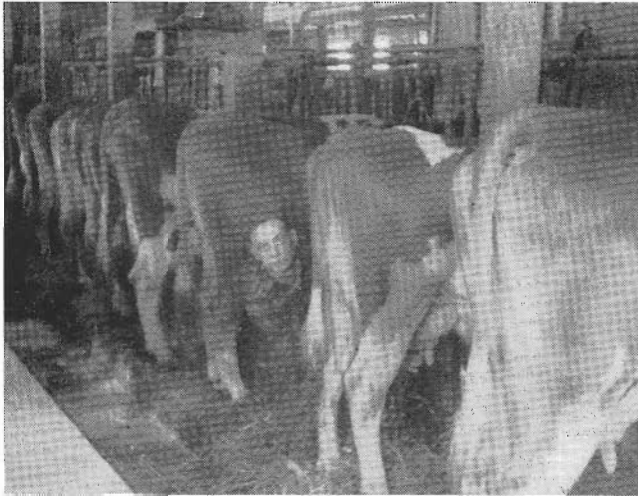
Safe-A-Mile



Relaxation on Wheels

Other Times . . .

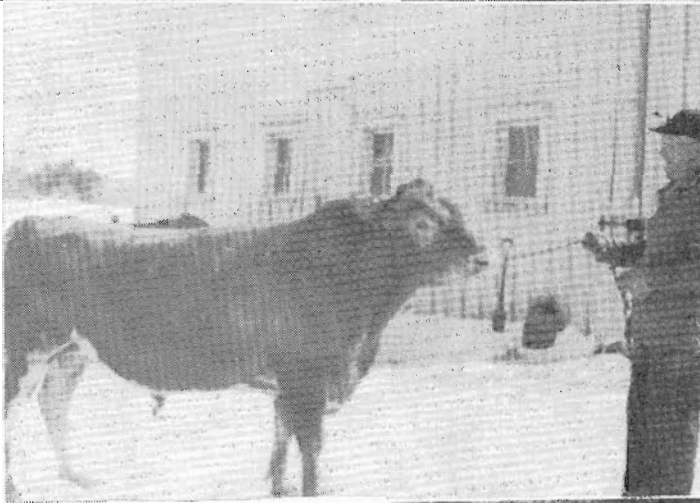
Moo-Juice



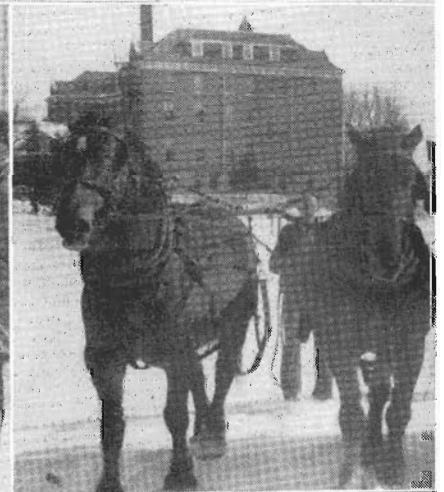
"Ye olde Barne"



The herd
Sire



Horse-
power



With Spring . . .
Comes
Young Life



We Work

M M M . . . Good!



The Staff of Life

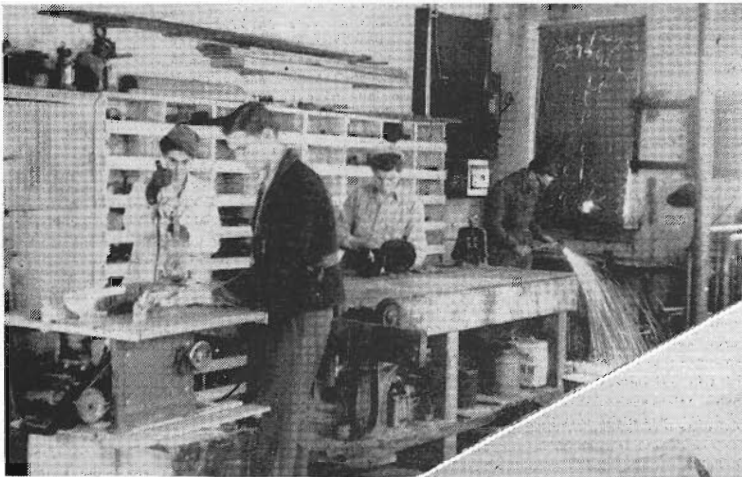


To Keep
Us Neat
and Trim



Any Dirt?
Blame Us!

Learning



Mr. Fixits



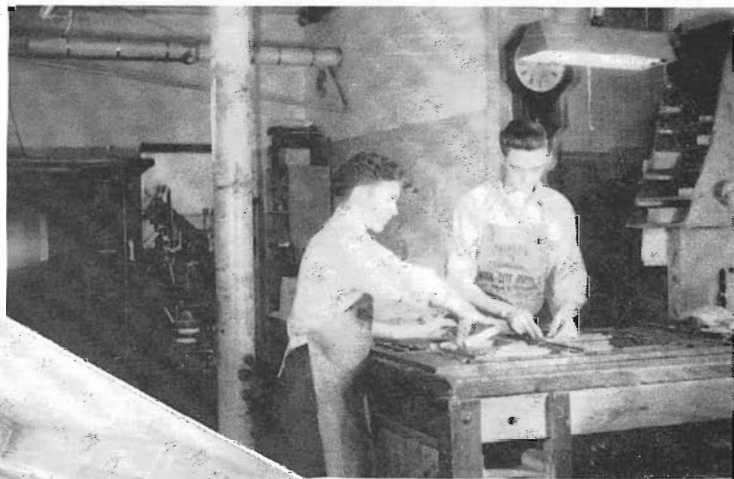
Maintaining the
School Plant



Making it hot for us

Trades

Printing with a Smile



"Bound to Wear" . . .



Hitting the Nail
On the Head

Clerical . . .

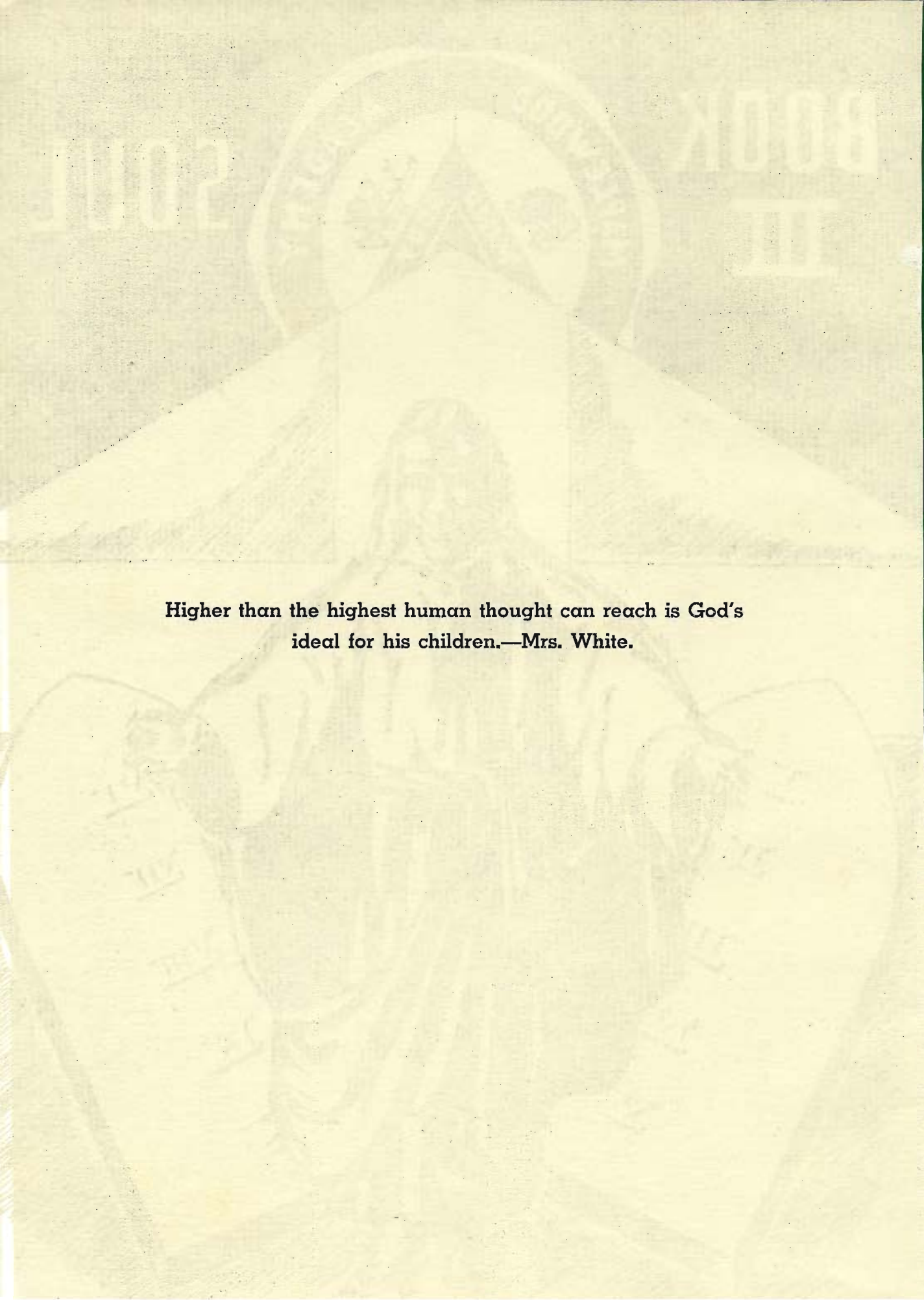
Checking Your Faithfulness



Shhh . . . Study Period!

SOUL





**Higher than the highest human thought can reach is God's
ideal for his children.—Mrs. White.**



Music For . . .

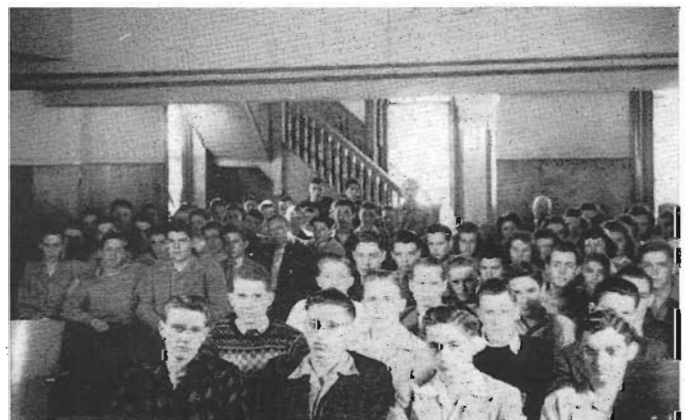
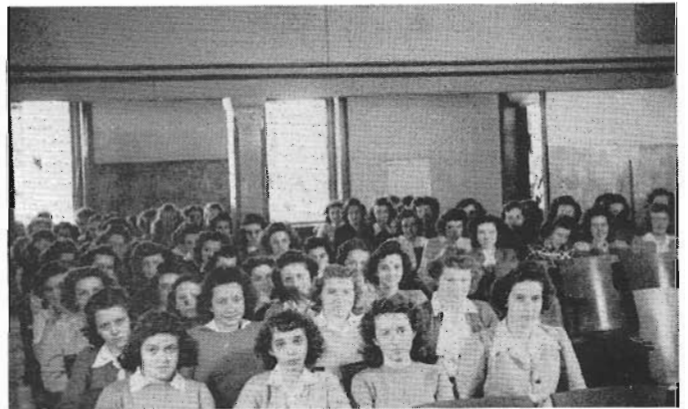
Church

In Chapel

We Listen

and

Learn



Sabbath School



Our Leaders . . .

Ruth Russell, Assistant Superintendent
Mr. Clarence Sorensen, Assistant Supt.
Mrs. Strickland, Superintendent
Mr. Torkelsen, General Superintendent
Mrs. Bieber, General Secretary
Mrs. Ben Christensen, Secretary
Donald Howe, Assistant Secretary
Mable Saunders, Assistant Secretary



**In Songs of Praise . . .
We make a joyful
Noise Unto the Lord.**



**¿Cuántas Veces ha estudiado
usted su lección para el
Sábado?**

Spanish Sabbath School Class

Missionary Volunteers

Officers . . . 2nd Semester

Front Row:

Dorothy Kaldahl, Leader

Miss Ingram, Sponsor

Herbert Senne, Leader

Back Row:

Billy Nelson, Secretary

Pat La Rochelle, Secretary

Mr. Ford, Sponsor (not in picture)



May we show you
to a seat?



Stories of Salvation
in Song . . .

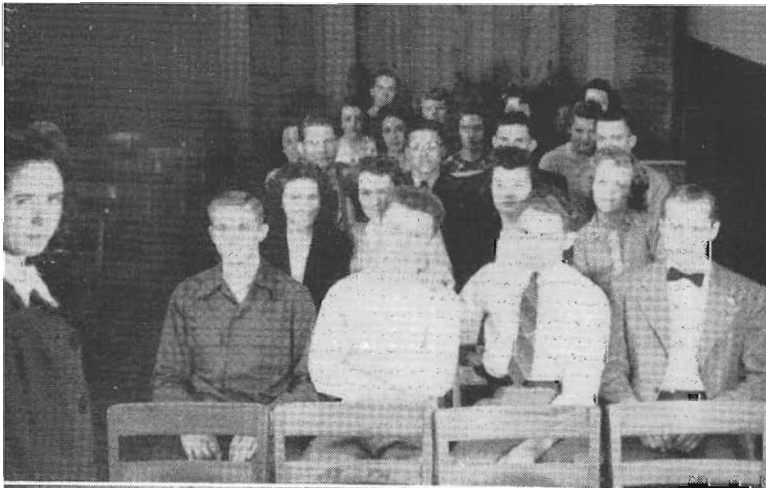
One of many programs
of real interest



Preparing

for

Service



Learning Gospel
Salesmanship . . .

Colporteur Club



Practice at
Speaking . . .

Seminar

Mr. Curry . . .

"How many can we
get into this car?"



A Few of the
Literature Band

Pamphlets . . .
for
Spreading Truth



Serving

Through

Literature

The Key . . .

Morning and Evening Worship . . .



Prayer Bands . . .
Once a Week



Senior Prayer Bands . . .
Friday nights

to

Christian Education

**Maplewood Academy's Threefold
Education Plan Offers
Entrance to More
Abundant . . .**



LIFE . . .

BOOK IV

Life has no pleasure nobler than that of friendship.—Johnson

Life in General...

PRIZE SNAPS

1st—Places
Arlee Torkelsen

2nd—People
Mike Musta

1st—People
Dean Christensen

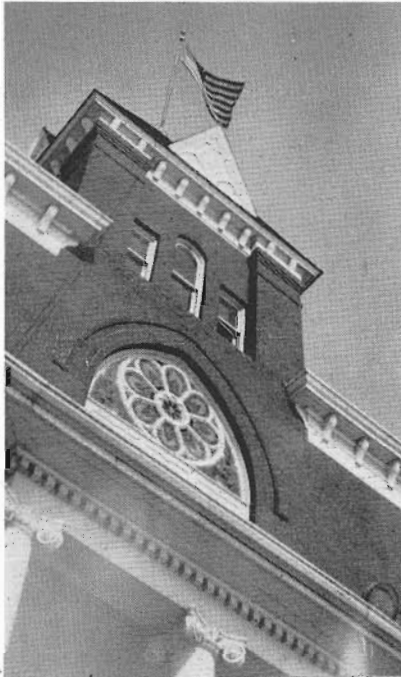
2nd—People
Sandy Mueller

1st—Places
Mark Dickenson

2nd—Places
Dean Christensen

3rd—People
Dean Christensen

1st—People
Elaine Magdanz



West Hall Life . . .

Dean Ingram . . .
Consults her right
hand . . . Tam Martin.



Typical Girls in
Typical Rooms . . .

Arliss, Maurine, Ardythe



K.
D.
L.

S
E
S
S
I
O
N





Crescit
Eundo
Officers
Confer .

Plotting
Open
House

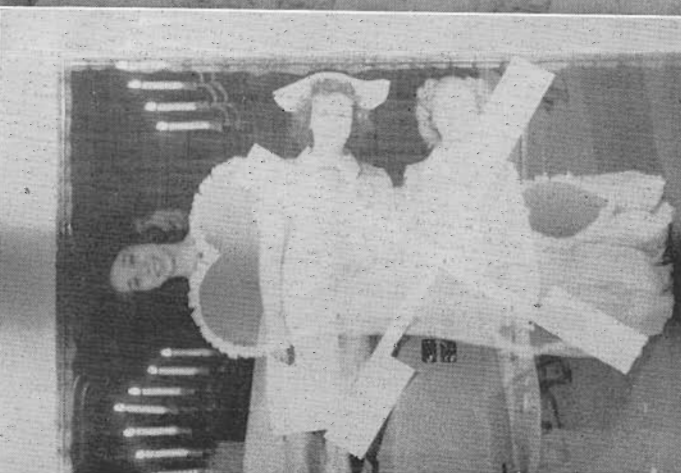
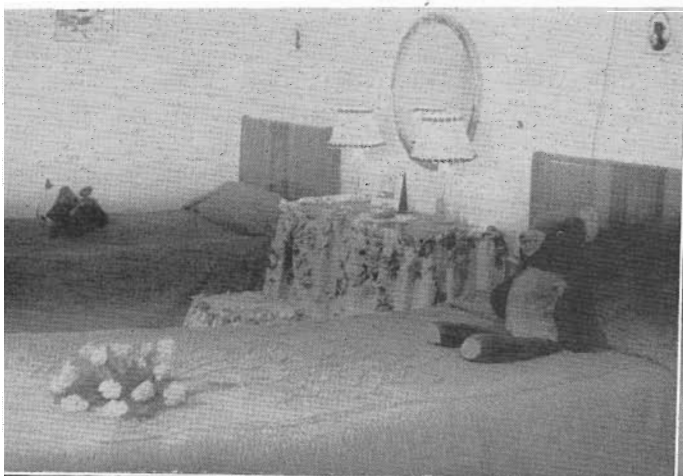
OFFICERS Vice-Pres., 2nd, Lois McTaggart; Secy.-Treas., 1st, Gladycie Erickson; Sgt.-at-Arms, 1st, Mable Brown; Pres., both sem., Dorothy Kaldahl; Secy.-Treas., 2nd, Mavis Emmerson; Vice-Pres., 1st, June Johnson; Sgt.-at-Arms, 2nd, Lois Nelson.

Memories of Open House . . .

How those rooms did shine!

A Wedding in June . . .

A double Exposure to pleasure.



East Hall . . .

Dean Holbrook . . .

A Man's MAN.

14 heads are better . . .



or . . . Eveless Eden

This Flag tells a real East Hall story... of sacrifice and courage... Friends in sudden absence... Empty rooms... Books deserted—Current number in service, 119—See Service Page.

Knight's Officers

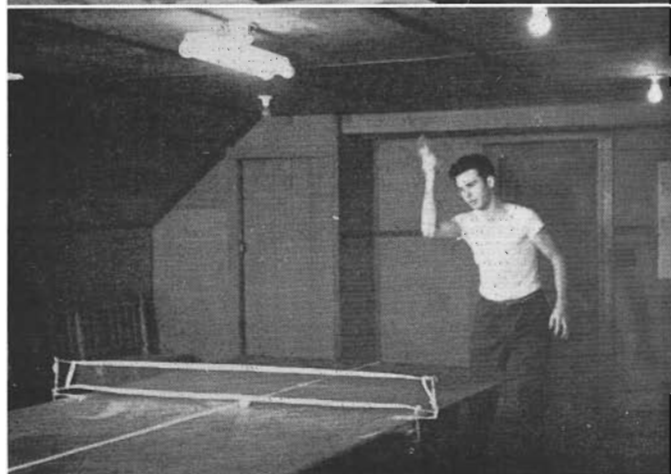
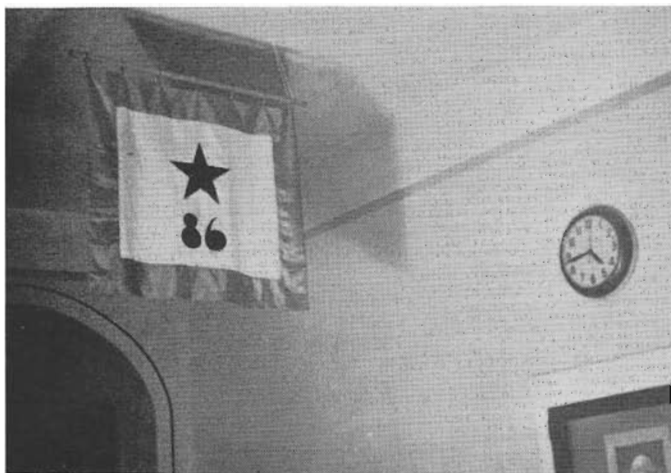
Charles Erickson, Sgt.-at-Arms, 1st sem.
Dean Johnson, Secretary, 2nd sem.
Dean Christensen, Treasurer, 1st sem.
Wayne Burgess, Sgt.-at-Arms, 2nd sem.
Ervin Dedeker, Vice-President, 1st sem.
Herbert Senne, President, 2nd sem.
Charles Christensen, Treasurer,
2nd sem.
Richard McKellip, Athletic Secy.,
2nd sem.
Donald Burgeson, Secretary, 1st sem.
Philip Roland, Athletic Secy., 1st sem.
Truxton Blanchard, President, 1st sem.
John Davis, Vice-President, 2nd sem.

Neat
Rooms
for
Neat
Men

Upstairs
Play Room

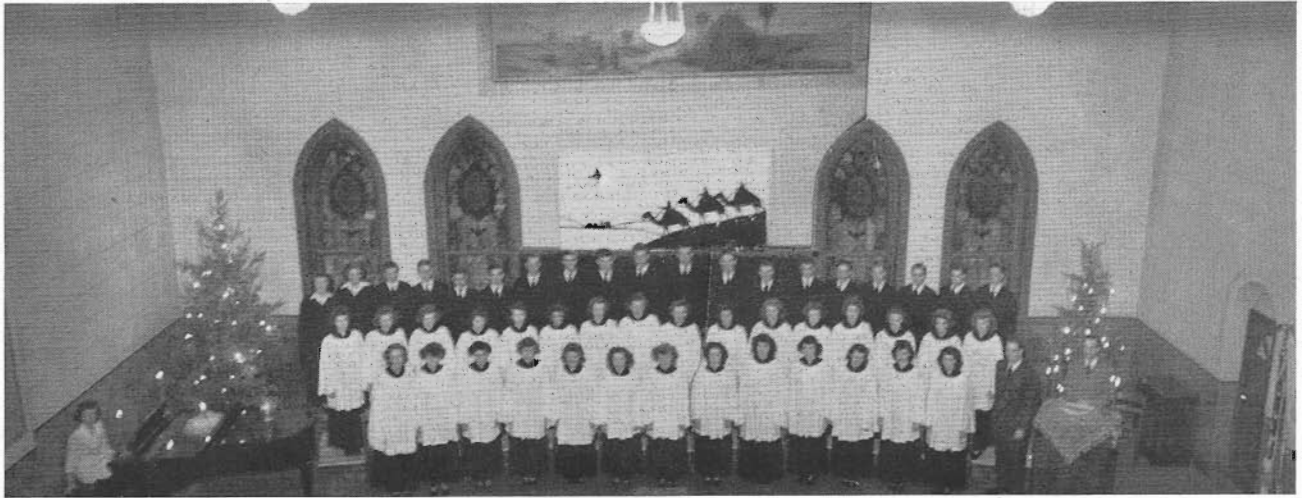
Knights
Serenade
the Ladies

Gentlemanly
Attention.



Christmas Music

in a Christmas Setting . . .

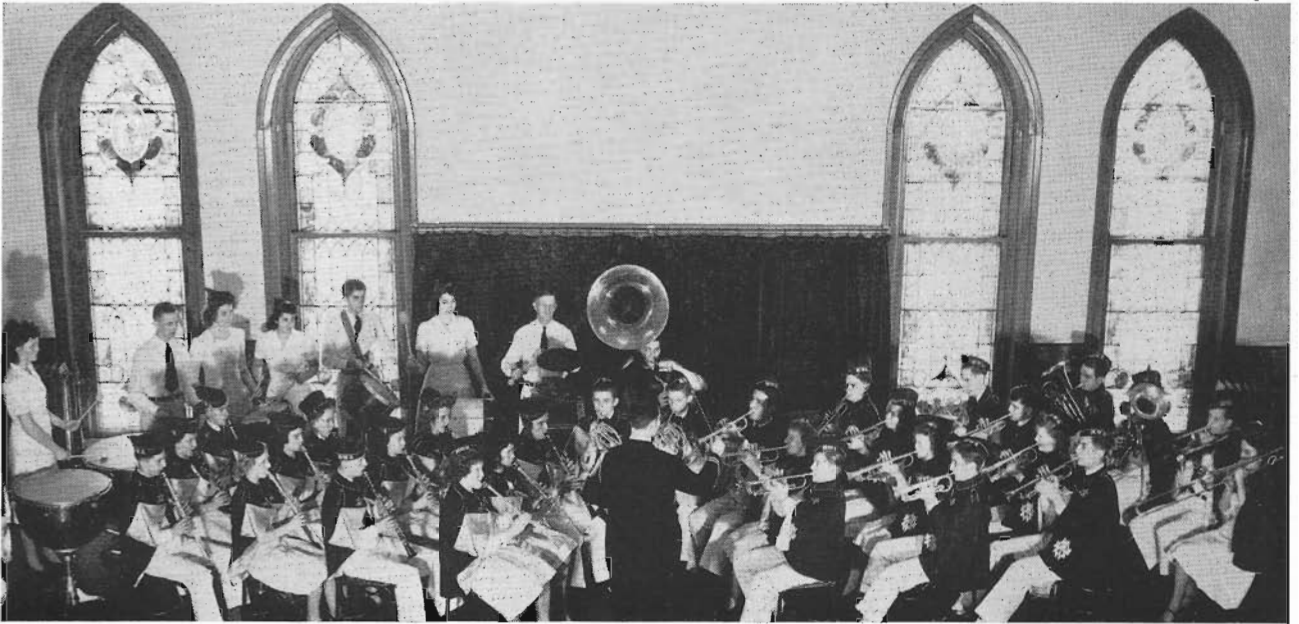


by Maplewood's Talented

Choir



Precision Performance



Grows from Faithful Practice





SEXTETTE

Gladys Osvold, Helen Sorensen, Dorothy Kaldahl, Pat LaRochelle, Doris Berlin, Arlene Nelson, Mrs. Hill

Touring Teams

from Maplewood to the corners of Minnesota

Hartley Berlin, Arlee Torkelsen, Don Burgeson, Dean Torkelsen

QUARTET

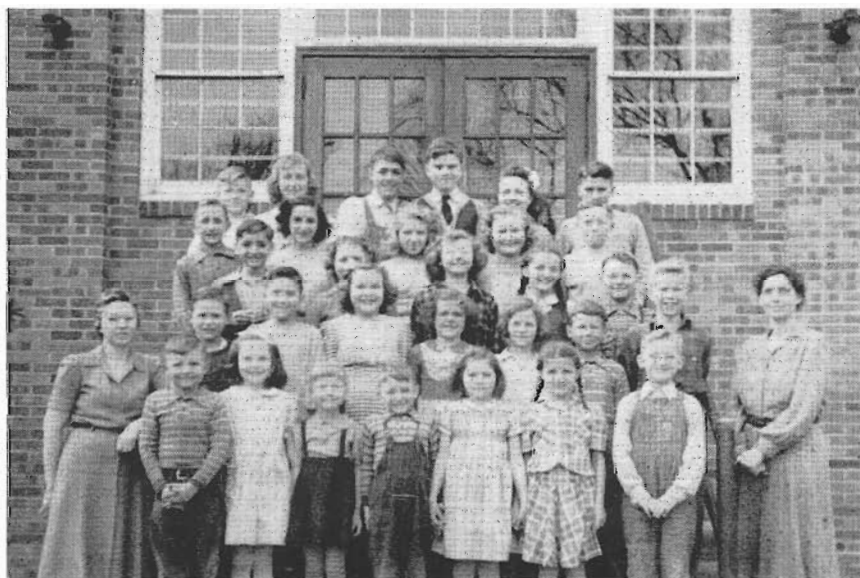


Maplewood

Life Begins

in the

Campus Grade School



Personnel

Front Row: Mrs. Douglass, Gary Ford, Virginia Davis, Grace Amundsen, Donald Bieber, Ardis Pettis, Dorothy Zummach, James Zummach, Mrs. Wold.

Second Row: Alton Pettis, Eldon Ford, Ladelle Peterson, Grace Mary Osberg, Norma Jean Carter, Donald Amundson, Billy Esping.

Third Row: Jack Zummach, Betty Ann Esping, Mary Ann Amundson, Mary Zummach, Gary Husted.

Fourth Row: Kenneth Magdanz, Arden Zummach, Shirley Forbes, Laurell Peterson, Glee Ford.

Fifth Row: Loren Dickinson, Donna Esping, Edward Fredrickson, Forrest Davis, Shirley Anderson, Cleo Ford.

The NORTH STAR

Volume VII Maplewood Academy, Hutchinson, Minnesota. February 1945 Number

olporter
of East Hall
Entertain

A special Christmas program consisting of several numbers from the Boys' Band and the Male Quartet brought smiles of approval from the students left for their homes to spend the vacation.

Mr. Sorensen played several solos, "A Boy's Quest" and the Male Quartet sang "The House of the Future" and "The Future of the World".

Stanley Skadshiem, a familiar voice in the choir, sang "The Future of the World".

hopsticks in Action
hopstick suppers were numerous in the past. It was the sort of thing that was enjoyed at the homes of the faculty and this year it was a patriotic program in honor of the First Lincoln birthday.

1945 Annual Service Column

Two of Maplewood's former students, who are now in the Services, visited here recently. Pvt. Jim Buckley, who has just finished Leadership school at Berkeley, Texas, was home on his first furlough. Jim has turned to Camp Leavenworth for his assignment into the Service, to graduate here this fall.

Other service men who have visited here recently are Pvt. Stanley Kirk, who is now in the Services, and Pvt. Harold B. ...

Maplewood Band
The Academy Bandmen have a concert Saturday, February 18, in the Academy gymnasium. The concert was assisted by the Marching Band and the Quartet.

FREE!
Saturday night, February 10, at 8:00 p.m., the Maplewood Students were allowed to form into a group and enjoy the entertainment given by the Chinese for the course.

Miss Gibson Leads in February 12 Celebration
Chapel on Monday, February 12, was a patriotic program in honor of the First Lincoln birthday.



Published monthly by the North Star at Hutchinson, Minnesota, under the Act of March 3, 1879.
Subscription rate: 50c a year
Advertising rate: 25c per column inch

EDITORIAL STAFF
Doris Berlin
Ruth Russell
Avis Mueller
Ervin Decker
Dorothy Skadshiem
Stanley Skadshiem
Mable Saunders
Marion Larson
Miss Lois J. Walker

BUSINESS STAFF
Mr. R. A. Strickland
Arlee Torkelson
Mavis Emmerson
Dean Christensen
Dwain Merickel
Marion Zummach

EDITORIAL STAFF
Paul Dickinson
Evelyn Hanse
Miss Lois J. Walker

BUSINESS STAFF
Mr. R. A. Strickland
Harriet Howe
Dwain Merickel
Marian Zummach



Published monthly by the North Star at Hutchinson, Minnesota, under the Act of March 3, 1879.
Subscription rate: 50c a year
Advertising rate: 25c per column inch

EDITORIAL STAFF
Avis Mueller
Arlee Torkelson
Perle Lockert
Gladys Osvald
Donna Livingston
Elmer Unterseher
Virgie Stiner

BUSINESS STAFF
Mr. R. A. Strickland
Harriet Howe
Dwain Merickel
Marian Zummach

EDITORIAL STAFF
Paul Dickinson
Evelyn Hanse
Miss Lois J. Walker

BUSINESS STAFF
Mr. R. A. Strickland
Harriet Howe
Dwain Merickel
Marian Zummach



Published monthly by the North Star at Hutchinson, Minnesota, under the Act of March 3, 1879.
Subscription rate: 50c a year
Advertising rate: 25c per column inch

EDITORIAL STAFF
Avis Mueller
Arlee Torkelson
Perle Lockert
Gladys Osvald
Donna Livingston
Elmer Unterseher
Virgie Stiner

BUSINESS STAFF
Mr. R. A. Strickland
Harriet Howe
Dwain Merickel
Marian Zummach

EDITORIAL STAFF
Paul Dickinson
Evelyn Hanse
Miss Lois J. Walker

BUSINESS STAFF
Mr. R. A. Strickland
Harriet Howe
Dwain Merickel
Marian Zummach

Northerner Campaign Picnic

as
Reward for Faithful Workers
(1159 subscriptions)



We Helped Create
this year's
Maple Log



Mark Dikensen, Art
Editor . . . Division Pages . . .
Drawings . . . Fort Snelling
During Pictures . . . Now in Army



STAFF

Left Side—Back to Front: Business, Mr. Strickland; Treasurer, Mavis Emmerson; Circulation, Dwain Ford; Advertising, Dean Christensen; Circulation Ass't, Grace Steiner (not in picture).
Right Side: Editor, Stanley Skadsheim; Associate, Maurine Strom; Religious, Arliss Lundberg.
Center: Advisor, Mr. Hoskins; Activities, Truxton Blanchard; Snaps, Patty Erwin; Copy, Doris Berlin; Classes, Bill Zima; Faculty, Earl VandeVere.



**Feeding Fifteen Faces . . .
Staff Waffle Breakfast**



**Hard at Work . . .
Editorial Staff**

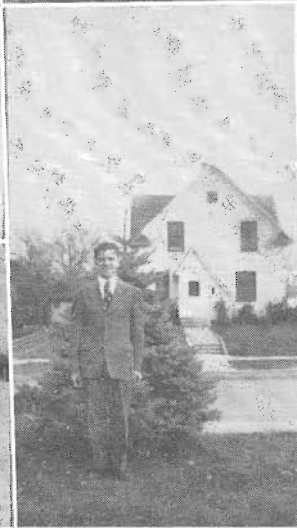
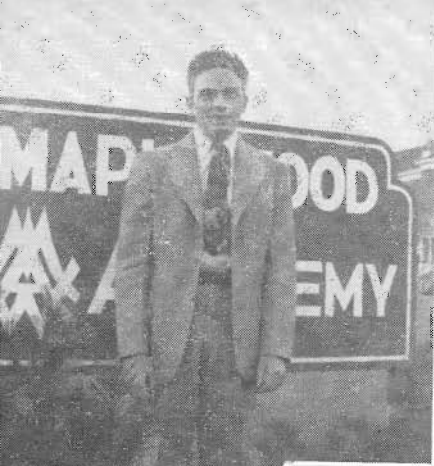


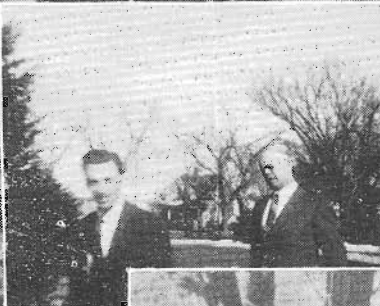
**700 Logs to Sell . . .
Business Staff**

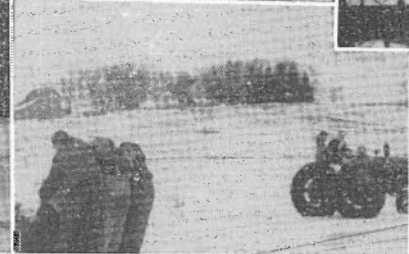
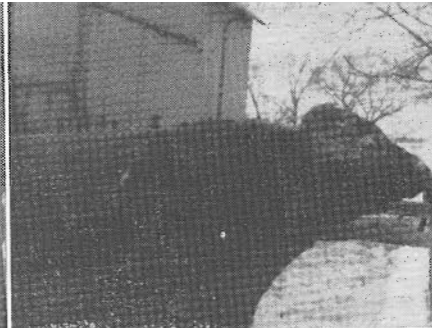
Fast Shooting

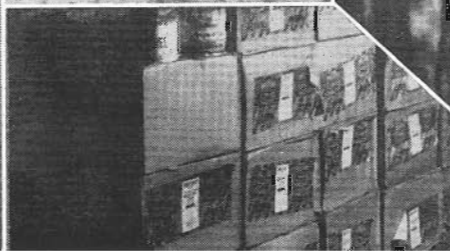
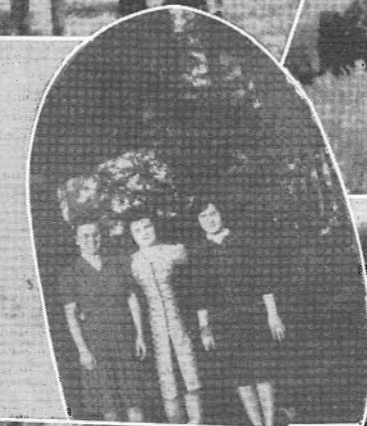
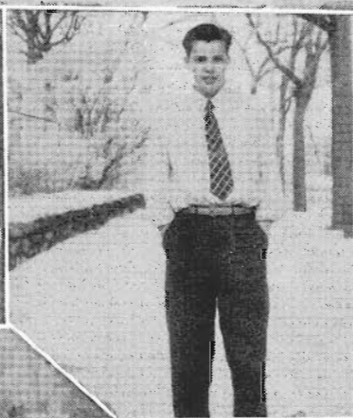
People and Places We Know and Love











Autographs

THE
BOULDER-PORTER SANITARIUM SCHOOL OF NURSING
OFFERS THE OPPORTUNITY OF A NURSING EDUCATION
AMID THE BEAUTIES OF THE ROCKIES

For further information write:

MISS GENEVIEVE HANSEN, Director
Boulder-Porter Sanitarium
School of Nursing
Boulder, Colorado

Take your pre-nursing at Union



Freshman Class

Congratulations to the Seniors of 1945

California Redwood Distributors Ltd.

New York

Chicago

New Orleans



"With such an army of workers as our youth, rightly trained, might furnish how soon the message of a crucified, risen and soon-coming Saviour might be carried to the whole world."

UNION COLLEGE, established for the training of our youth, continues its appointed task. Courses are offered that will aid in the preparation of teachers, ministers, doctors, nurses, Bible workers, dietitians, homemakers.

Catalogue and other information upon request.

UNION COLLEGE
Lincoln 6, Nebraska

Compliments of the

Minnesota-Wisconsin Truck Line

198 East Ninth Street

SAINT PAUL

Make Your Summer Vacation Count . . .

If you enroll at once with the Home Study Institute you can earn substantial credits toward graduation by the wise use of spare minutes. We offer work in Bible, English, History, Mathematics, Education, Languages, Bookkeeping, Stenography, and other subjects. Our school is open all the year, and our courses accepted at full value in academies and colleges. Payment in easy installments. Our latest catalogue is yours for the asking.

Home Study Institute

Takoma Park
WASHINGTON 12, D. C.

The National Home Health Service

A new plan developed during the past year to help meet the greater health needs of our nation is bringing unprecedented success to those who go to the homes with our literature as health workers. They arrive at the door supported by the prestige of government promotion and press or radio propaganda that is urging continually the importance of conserving and improving health in American homes.

A new picture prospectus has been built around this idea and a new manual of magazine selling has been prepared so every health worker may be equipped for success. There are special scholarship benefits for those who engage in this work as a means of earning part or all of their way in our denominational schools. For further information write to the publishing department secretary or Book and Bible House.

LIFE and HEALTH

Takoma Park, Washington 12, D. C.

CONGRATULATIONS TO THE
SENIOR CLASS OF 1945

E. A. VANDY

Merchandise Mart Bldg.

Chicago, Ill.

Only a seed, but it chanced to fall
In a cliff of a city wall
And, taking root, grew bravely up
'Til a tiny blossom crowned its top.

Only a book, but the work it wrought
Could never by tongue or voice be taught,
For it ran through a life like a thread of gold,
And the life bore fruit a hundred fold.

Why Wait Until You Finish School to Get Into the Lord's Work?

**The Colporteur Ministry Offers an Opportunity for
Immediate Service.**

**Earn Your Next Scholarship Canvassing.
Contact Your Publishing Secretary Now.**

Soon the book work will be ended
Soon will come the setting sun,
Then the joy to know in heaven
Those the faithful workers won.

Come, O come, and join the army
Of the colporteurs today!
Then go forth into the vineyard—
Your reward in souls will pay.

Compliments

Minnesota Conference of S.D.A.

Compliments of the

RICHFIELD PRINTING CO.

Louis Thayer, Owner

6642 Harriet Ave.

Minneapolis 9, Minn.

When you want the best in pictures,

think of us

BIRKELAND STUDIOS

HUTCHINSON, MINN.

THE BOOKS YOU READ AND THE LIFE YOU LEAD
MAKE YOU WHAT YOU ARE.

MINNESOTA BOOK & BIBLE HOUSE

1854 Roblyn Ave.
St. Paul 4, Minn.

WE ARE WHAT OUR MOST CHERISHED THOUGHTS
MAKE US. LET GOOD BOOKS GUIDE THEM.

MILLER'S Flavorful Vegetarian CUTLETS

"Yes, indeed! I prefer them because they're so tender and juicy. I just dip them in potato flour, corn meal, or either pulverized cracker crumbs or flakes, and nicely brown them in the frying pan with a liberal amount of oil. And do people like them! If I have a group of people to entertain, I split buns, spread with mayonnaise, and fill with SIZZLING HOT fried CUTLETS.

And there are so many ways to use Miller's Cutlets. We have them at least four times a week on our menu. Once in a while for a change we fry them as above, lay them in a baking pan, sprinkle over them a few slices of onion and cover with a bouillon or tomato sauce and bake twenty to thirty minutes."

—A Hospital Dietitian

Miller's Tenderized Cutlets are packed in the following sizes:
No. 10 30-oz. 16-oz. 11-oz.

If your dealer does not have Miller's Cutlets, write for information to:

International Nutrition Laboratory

Mount Vernon, Ohio



MAPLEWOOD BOOKBINDERY

Serving Schools and Libraries

REINFORCED REBINDING

Bookbinders

HUTCHINSON, MINNESOTA

Booksellers

Dear Prospective Maplewood Student:

The Bindery must sustain a crew of twenty or more workers. As students graduate it is necessary to add ten or so new bindery workers each year. The summer is our heaviest bookbinding season. At this time of year, students, who qualify, can work at good pay and build up a substantial credit for the following school year. There may be an opportunity for you. If interested, just call or write to us promptly.

Very sincerely yours,

The Maplewood Bookbindery
Hutchinson, Minnesota

EDUCATIONAL MATERIAL SERVICE

Index

Anderson, Dorothy, Onamia, Minn.....	25-27-39	Christensen, Charles, Casilla 7D Chillan, Chile.....	15-39-48
Axelson, Wanda, 466 Main Street, Hutchinson, Minn.	13-14-35	Christensen, Dean, R.F.D. 1, Pipestone, Minn.....	21-27-48
Baird, Doris, Hinsdale Sanitarium, Hinsdale, Ill.	23-27-38	Christensen, Deloris, Route 1, Gray, Iowa.....	14-35-50
Barnhart, Kathryn, Wadena, Minn.....	13-14-39	Christensen, Gladys, Dalbo, Minn., Box 14.....	23-44-46
Berggren, Anne Marie, 1007 East 7th Street, Duluth, Minn.	16-39-58	Christensen, Jeanette, Route 1, Gray, Iowa.....	17-38-50
Bergvall, Grace, 2436 10th Street, Berkeley 2, Cal.	13-15-51	Cowell, Charles, Route 2, New Richland, Minn.	14-48
Berke, Claire, 1976 Iglehart, St. Paul 4, Minn.....	15-28-55	Cowell, Margaret, Route 2, New Richland, Minn.	13-14-35
Berlin, Doris, Route 1, Pennock, Minn.....	21-27-46	Dahlquist, Romona, Box 55, Inver Grove, Minn.	15-28-39
Beyer, Eva, Welch, Minn.....	No Picture	Dailey, Donald, Red Lake Falls, Minn.....	14-40-43
Blanchard, Truxton, 318 East Water Street, Austin, Minn.	19-38-56	Dammen, Charles, 2604 8th St. So., Minneapolis, Minn.	16-27-29
Bliss, Betty, Shakopee, Minn.....	24-27-37	Davis, John, Austin, Minn.	17-30-36
Blom, Loyal, Middle River, Minn.....	15-39-50	DeBolt, Libby, Rt. 3, Box 245, Duluth, Minn.	57-60
Blom, Robert, Middle River, Minn.....	15-39-48	Dedeker, Ervin, Route 3, Hastings, Minn.....	25-38-48
Bossert, Betty, Mora, Minn.....	13-14	Denler, Junavieve, 1902 W. 7th St., Faribault, Minn.	16-38-46
Brown, Mable, R.F.D. 2, Box 69, Grand Rapids, Minn.....	17-27-47	Dickinson, Mark, 79 5th Ave. N. E., Hutchinson, Minn.	21-39-56
Burgeson, Don, 1513 6th Avenue South, Anoka, Minn.	22-48-52	Dickinson, Paul, 79 5th Ave. N. E., Hutchinson, Minn.	14-54-57
Burgeson, Mardelle, Austin, Minn.....	26	Emmerson, Mavis, 2529 Polk Street N. E., Minneapolis 13, Minn.	22-27-47
Burgeson, Ruby Jean, 1513 6th Avenue South, Anoka, Minn.	22-30-37	Engen, Gordon, Union College, Lincoln, Nebr.....	26
Burgess, Wayne, Clam Falls, Wis.....	25-27-48	Erickson, Charles, Box 104, Long Prairie, Minn.....	19-38-48
Burghart, Milton, R.F.D. 5, Sleepy Eye, Minn.....	15	Erickson, Gladys, 1204 Norwood Street, Brainerd, Minn.	19-39-47
Burt, Norman, Rt. 4, Minneapolis, Minn.....	14-36-51	Erwin, Patricia, 502 East Water Street, Austin, Minn.	17-47-56
Byer, Genive, Rt. 2, Welch, Minn.....	No Picture	Ford, Dwain, Hutchinson, Minn.....	20-27-40
Campbell, Merie, Hinckley, Minn.....	24-40-46	Gange, Leota, Bemidji, Minn.....	13-14-37
Carlson, Arthur, Rt. 2, Box 159, Cloquet, Minn.	15-42-48	Gelford, Gerald, Bayport, Minn.....	16-27-39
Carter, Patricia, 3415 France Ave., Robbinsdale, Minn.	17-46-55		

Hansen, Eugene, Bowman, N. Dak.....	17-31-41	Ley, Robert, 313 Sibley Avenue N., Litchfield, Minn.	15-55-59
Hansen, Evelyn, 277 Marshall Avenue, St. Paul 6, Minn.....	25-50-61	Livingston, Donna, R.F.D. 3, Fairmont, Minn.	20-29-40
Hansen, Serena, Route 3, Pelican Rapids, Minn.	17-46-55	Lockert, Perle, Fort Dodge, Iowa, Gen. Del.	15-39-50
Hansen, Vernon, Bowman, N. Dak.....	15-39-48	Long, Mary, R.F.D., Hutchinson, Minn.....	16-59-60
Hanson, Arthur, Greenbush, Minn.....	17-33-36	Lundberg, Arliss, 2817 Girard Avenue S., Minneapolis, Minn.	22-38-39
Hanson, Joseph, Greenbush, Minn.....	16-29	Magdanz, Elaine, 527 Main Street N. E., Hutchinson, Minn.	14-28-41
Harper, Juanita, Baldwin, Wis., Route 2.....	15-35	Martin, Tam, Sauk Centre, Minn.....	20-38-46
Horn, Betty, 1153 Abell Street, St. Paul 3, Minn.....	13-14	Merickel, Dwain, Mapleton, Minn.....	15-33-39
Howe, Donald, R.F.D. 2, Dodge Center, Minn.	15-40-58	Merickel, Elmer, Mapleton, Minn.....	16-30-54
Howe, Harriet, R.F.D. 2, Dodge Center, Minn.	24-39-50	Morisset, Ramona, 711 Minnesota Avenue, Bemidji, Minn.	13-15-39
Jacobsen, Elaine, Middle River, Minn.....	13-14	Mueller, Avis, Route 3, Box 41, Princeton, Minn.	17-45-50
Johnson, Clayton, Howard Lake, Minn., Route 2, Box 45.....	15-59	Murphey, Georgia, Camden Street 6, Minneapolis, Minn.	15-50
Johnson, Dean, Route 2, Box 45, Burtrum, Minn.	14-48-50	Musta, Florence, 123 10th Avenue N., South St. Paul, Minn.	15-39-50
Johnson, June, 4023 S. E. Yamhill, Portland 15, Ore.	23-29-47	Musta, Michael, 123 10th Avenue N., South St. Paul, Minn.....	16-31-36
Johnstone, Harry, Box 357, Beach, N. Dak.....	15-29-37	Myers, Rosalee, 1819 Lyndale S., Apt 336, Minneapolis, Minn.	25-32-35
Johnstone, June, Union College, Lincoln, Nebr.....	26	McDonald, Terry, 2200 Garfield Ave. S., Minneapolis, Minn.	17-39-48
Jones, Bradley, 3015 Lyndale S., Minneapolis, Minn.	15-39-45	McKellip, Dick, 1024 6th Ave. S., Fairbault, Minn.	21-29-48
Kaldahl, Arthur, Bejou, Minn.....	19-27-30	McTaggart, Lois, Campbell, Minn.....	23-39-42
Kaldahl, Dorothy, Brooten, Minn.	22-47-52	Nelson, Arlene, 643 Mapleton Ave., Boulder, Colo.	20-32-52
Kaldahl, Evelyn, Route 3, Glenwood, Minn.....	16-35-46	Nelson, Billy, Rt. 3, Box 5, Hutchinson, Minn.	21-41-51
Kaldahl, Lucille, Route 3, Glenwood, Minn.....	17-28-46	Nelson, Lois, Route 3, Clear Lake, Wis.....	16-38-47
Kjos, Marvis, 4708 Washburn Avenue S., Minneapolis, Minn.	39-57-60	Nelson, Stuart, 3209 42nd Ave. S., Minneapolis, Minn.	16-32-37
LaRochelle, Pat, Hutchinson, Minn.	21-40-52		
Larsen, Phyllis, Morgan, Minn.....	17-35-46		
Larsen, Roy, Morgan, Minn.....	13-14-36		
Larson, Marian, 3027 18th Ave. S., Minneapolis, Minn.	21-28-46		

Nordin, Sylvia, 9015 North Central Ave., Portland, Ore.	24-32-40	Sorensen, Helen, Pelican Rapids, Minn.	14-50-52
Ostgard, John, Route 3, Fertile, Minn.	14-32-43	Steiner, Grace, 135 Clay St., Anoka, Minn.	17-42-56
Osvold, Gladys, M.W.A., Hutchinson, Minn.	15-43-52	Steiner, Virgie, 135 Clay St., Anoka, Minn.	23-40-46
Osvold, Lilliebelle, 634 Laurel St., Cloquet, Minn.	14-29-39	Strom, Maurine, 1665 Ashland Ave., St. Paul, Minn.	16-38-46
Osvold, Norman, M.W.A., Hutchinson, Minn.	15-35-39	Stropp, Delores, Merrifield, Minn.	16-37-42
Owens, Marjorie, Rt. 1, Box 30, Mankato, Minn.	15-28-35	Struck, Berniece, 774 Aurora Ave., St. Paul, Minn.	24-29-46
Parry, Lois, Maple Plain, Minn.	13-14	Syvertson, Betty Jo, Route 2, Box 88, Whalan, Minn.	16-46-51
Peterson, Ralph, 1934 Aldrich Ave. S., Minneapolis, Minn.	25-27	Thompson, Elaine, 1701 Sunset St., Albert Lea, Minn.	15-28-35
Roberts, Verna, 660 Lafond Ave., St. Paul 4, Minn.	17-35-50	Tomeraasen, Ardythe, 4152 32nd Ave. So., Minneapolis, Minn.	14-38-46
Roland, Phillip, 6th St., Bayport, Minn.	19-27-48	Tomeraasen, Phyllis, 4152 32nd Ave. So., Minneapolis, Minn.	16-32-41
Roos, Margaret, 1700 Westwood Blvd., Los Angeles 24, Calif.	14-39-42	Torkelsen, Arlee, M.W.A., Hutchinson, Minn.	22-39-52
Russell, Dorothy, Route 3, Verndale, Minn.	16-37-46	Unterseher, Elmer, 204 4th Street S. E., Wadena, Minn.	15-39-50
Russell, Nettie, F.F.D. 3, Verndale, Minn.	13-14-42	Vallentin, Mildred, 1412 Oak Street, Brainerd, Minn.	21-37-44
Russell, Ruth, Route 3, Verndale, Minn.	11-40-46	VandeVere, Earl, 625 Oak Street, Hutchinson, Minn.	15-51-56
Saunders, Mable, 83 5th Ave. N. E., Hutchinson, Minn.	16-40-54	Wenzel, Vernon, Oak Park, Minn.	25-27-30
Senne, Herbert, Mound, Minn.	17-37-48	Wold, Evangeline, M.W.A., Hutchinson, Minn.	25-40-50
Sheppard, David, 638 Ferbuy St., Winnipeg, Manitoba, Canada	14-42-48	Wykoff, Beverly, 65 S. 11th Street, Minneapolis, Minn.	15-38-57
Skadsheim, Stanley, Hutchinson, Minn.	22-37-56	Zima, Willard, 2512 Bryant S., Minneapolis, Minn.	22-49-51
Skibsted, Arthur, Como Sta., Rt. 5, St. Paul, Minn.	13-14-48	Zuberbier, Betty, R.F.D. 3, Badger, Minn.	13-14-35
Skibsted, Silmar, Como Sta., Rt. 5, St. Paul, Minn.	15-39	Zuberbier, Doris, R.F.D. 3, Badger, Minn.	20-35-38
Smith, Herbert, 2519 Emerson Ave. S., Minneapolis, Minn.	15-31-39	Zummach, David, R.F.D., Hutchinson, Minn.	15-39
Smith, Jeanene, 1813 Orchard Ave., Glendale 6, Calif.	15-50-51	Zummach, Joyce, R.F.D., Hutchinson, Minn.	13-14-39
Sorensen, Betty Lou, Main St. N., Hutchinson, Minn.	17-50-61	Zummach, Marian, R.F.D., Hutchinson, Minn.	19-26-40
		Zummach, Paul, R.F.D., Hutchinson, Minn.	16-30-57

Autographs

