

Maple Log 1944



Ex Libris

Carol Jean Ruder

Editor-in-Chief

D. J. Bieber

Business Manager

Adrian R. M. Lauritzen

Faculty Associate

The 1944 Maple Log

Carol Jean Ruder - - - - Editor
D. J. Bieber - - - - - Business Manager
Dwain Ford - - - - - Advertising Manager
Truxton Blanchard - - - - Circulation Manager
Adrian R. M. Lauritzen - Faculty Associate

*Yearbook of
Maplewood Academy*

Foreword

With the sincere desire that through these pages you may recapture forgotten joys. The ideals and traditions of Maplewood will not be so quickly forgotten if you have a book of memories to help you reminisce. Herein may be reminders of precious moments, unknown to us, when you caught a glimpse, a vision of the future. We hope this will provide an opportunity for thought, for retrospect, for a review of the months so filled with classes, activities, and friendships.

Contents

Administration
Campus
Classes
Activities
Features



Mr. and Mrs. Adrian R. M. Lauritzen

Dedication

Maplewood Academy is engraved forever in the hearts of its students by the energy and talent of its youthful musical leaders.

Ten years ago, Adrian Lauritzen came to Maplewood Academy. Those ten years have seen the musical interest and standard reach beyond all that could be expected or hoped.

The department has grown, and in 1942 Mrs. Lauritzen joined the teaching staff as instructor in voice.

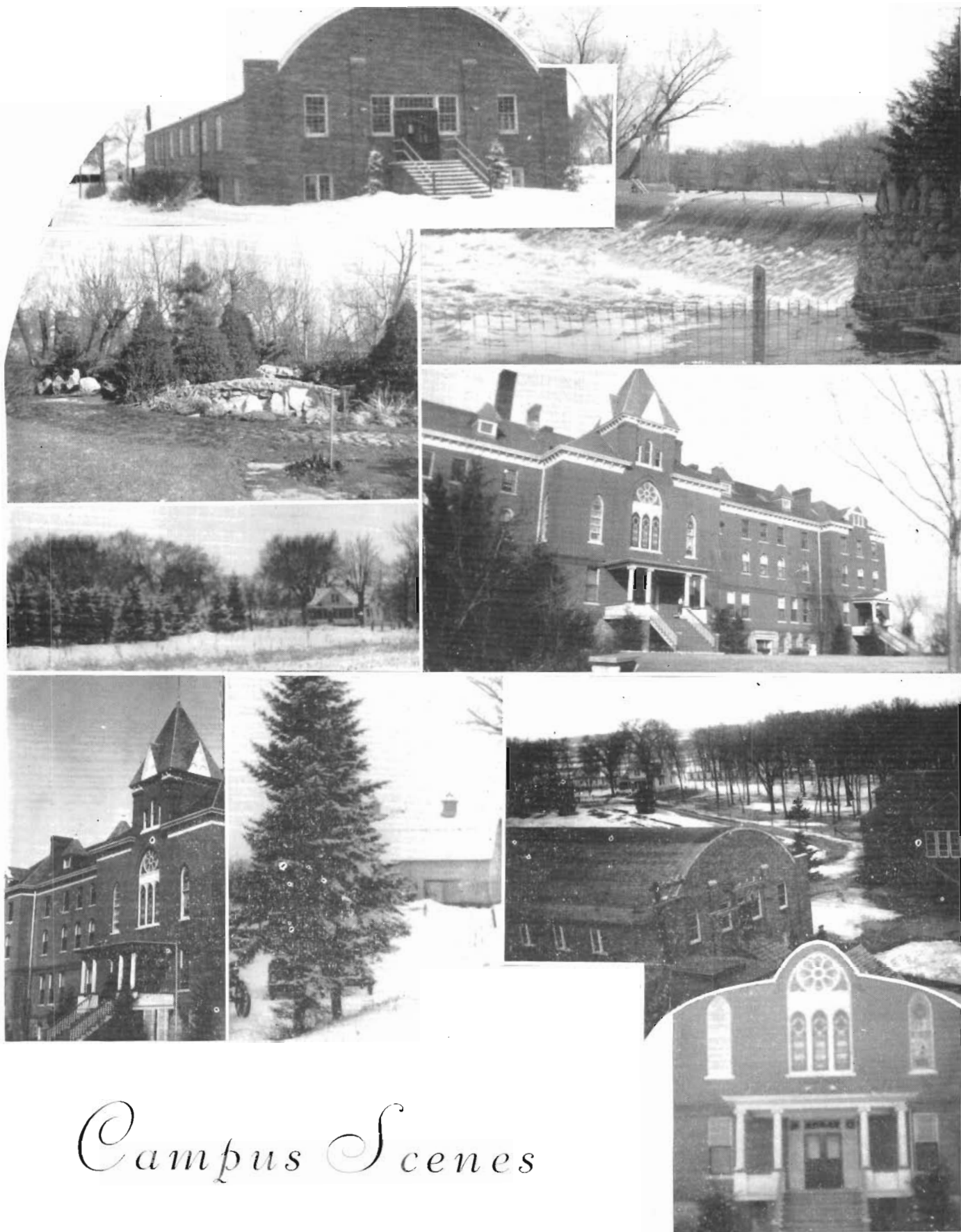
In the years that Mr. and Mrs. Lauritzen have been here each successive student body has wholeheartedly accepted these people, not only as esteemed instructors but as beloved friends.

These years have seen our leaders of tomorrow grow in character from their character, in good fellowship from their fellowship, in poise from their poise.

Now they are leaving for Union College to assume responsibilities there.

As a memorial to the place which they hold in the hearts of students and faculty, it is our pleasure to dedicate to them the "Maple Log" of 1944.

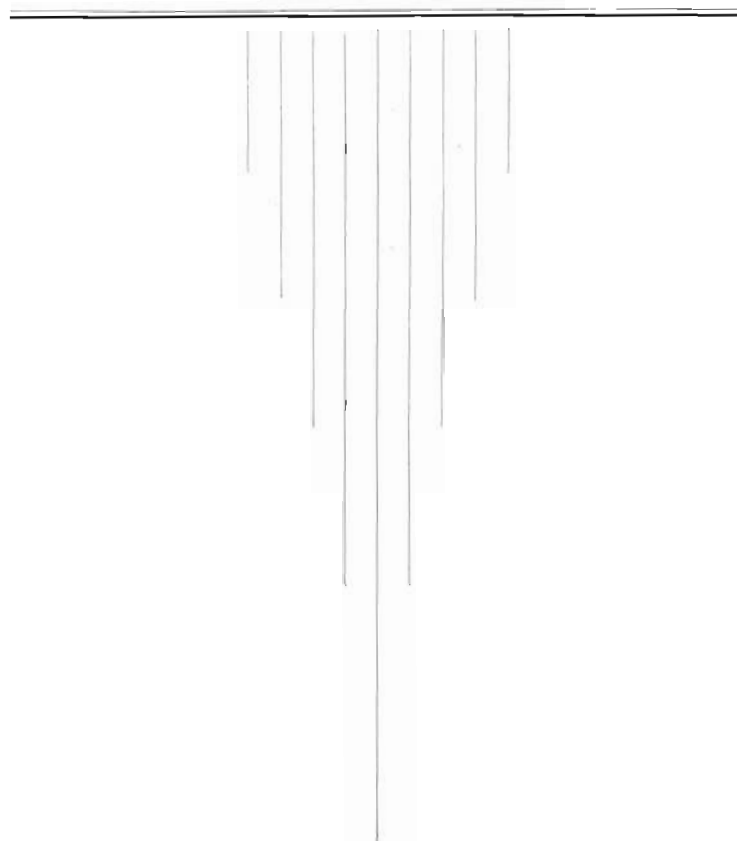




Campus Scenes



Administration





M. V. Campbell

President, Northern Union Conference

Board of Trustees

C. V. Anderson, - - <i>Chairman</i>	
D. J. Bieber, - - - <i>Secretary</i>	
W. A. Howe	Dr. E. C. Mitchell
W. L. Barclay	J. W. Christian
E. R. Colson	Carl Sundin
Dr. C. J. Martinson	F. J. Nenno
C. E. Christensen	C. P. Merickel
N. R. Nelson	

C. V. Anderson

President, Minnesota Conference
Chairman, Board of Trustees





D. J. Bieber, B. A.

Accountant 1939-41

Principal 1941-

Union College

Northern Normal and Industrial
College, Aberdeen, So. Dak.

University of Minnesota



Arthur Axelson,
B. A. M. A.

Bible, 1943-
Hutchinson Theological
Seminary
University of Neb.
Iowa State College
S.D.A. Theological Sem-
inary



Lois J. Walker, B. A.

English, Librarian, 1942-
Emmanuel Missionary
College
University of Neb.
Canadian Junior College



Leota Gibson, B. A.

Matron, 1942-
Union College
University of Minn.



O. E. Simon, B. A.

Press Supt., Printing
Shorthand, 1938-
Union College
Kansas State College

Academy

Adrian R. M. Lauritzen,
B. Mus. Ed., M. Mus. Ed.

Music Instructor, 1934-
MacPhail College of
Music
Minneapolis College of
Music
University of Minn.
Chicago Musical College

Mrs. A. R. M. Lauritzen

Assitant Music Instruc-
tor, 1942-
MacPhail College of
Music

D. E. Davis, B. A.

Physics, Biology
Maintenance, 1942-
Emmanuel Missionary
College

Betty Christensen

Piano, 1941
MacPhail College of
Music
University of Minn.





Leland Torkelsen
Bindery Salesman 1940-



Ruth M. Ingram, B. A.
Dean of Girls, Spanish,
1940-
Emmanuel Missionary
College
University of Chicago



C. R. Swan, B. A.
Accountant, Commercial,
1941-
Emmanuel Missionary
College



Paul Ford, B. A.
Chemistry, Mathematics,
Supt. Craft Shop, 1934-
Emmanuel Missionary
College
Iowa State Teachers'
College
University of Minn
University of Okla.

Faculty



Wilbur Holbrook
B.Th., B.A., M.A.
M.C.C., History, 1943-
Pacific Union College
University of Wis.
S.D.A. Theological Sem-
inary

Mrs. G. W. Curry, B.A.
Home Economics 1938-
Emmanuel Missionary
College
University of Wisc.
Specialty Binder

G. W. Curry
Bindery Supt., 1937-
University of Neb.

Everett D. Kirk, B. A.
English I, Agriculture,
Farm Superintendent,
1935-
Union College
University of Neb.
University of Minn.

Henrietta Holbrook, R.N.
School Nurse, 1943-
First Aid Instructor
St. Helena Sanitarium
and Hospital



[illegible]

The Class of 1944

"The Challenge of the Unfinished Task"

Laurie Martin
Valedictorian

Arleen Vande Vere
Salutatorian

Honor Ten
(Listed Alphabetically)

Doris Anderson
Ernie Aulick
Hattie Briggs
Maryalice Hansen
Marjorie Holbrook
Edna Jensen
Lou Wana Johnson
Ned Le Bard
Joe Nozaki
Donna Wadsworth

LAURIE MARTIN
Sauk Centre, Minn.

Senior Class Pastor; W. M. C. First Sergeant; M. V. Assoc. Leader '43; Crescit Eundo Vice President; K. D. L. President '43; Prayer Band Leader '43 and '44; Colporteur Club Leader; Seminar; Valedictorian



ARLEEN VANDE VERE
Hutchinson, Minn.

Maplewood Choir; Band; Girls' Ensemble; Editor-in-Chief Northernner '43; Maple Log Art Editor; Salutatorian



MARIAN DAILEY
Red Lake Falls, Minn.

President Senior Class; Maplewood Choir; Band; Girls' Triple Trio; Girls' Ensemble; Assoc. Leader M. V. '44; Prayer Band Leader '44



MARJORIE HOLBROOK
Hutchinson Minn.

Vice President Senior Class; W. M. C. Staff Sergeant; Maplewood Choir; Band; Girls' Ensemble; Seminar; Honor Ten



BETTY BINDER
Tolstoy, South Dakota
Girls' Ensemble; Maplewood Choir; Senior Class Secretary; Maple Log Editorial Staff

MARYALICE HANSEN
Versus Falls, Minn.

Senior Class Treasurer; Prayer Band Leader '43 and '44; Assoc. Editor Northernner '43; Seminar; Honor Ten

WARREN TOMERAASEN
Omaha, Nebraska

M.C.C. Staff Sergeant; Maplewood Choir; Band; East Hall Band; Sergeant-at-Arms Senior Class; Sergeant-at-Arms K.E.H.; House Committee; Seminar

LEON STICKNEY
Staples, Minn.

M.C.C. Sergeant; Prayer Band Leader
'44; Seminar

BETTY SMITH
Clayton, Wis.

W.M.C. Pfc.; Seminar

DONNA SAYLES
Cesmos, Minn.

Maplewood Choir

LORETTA THOMPSON
Albert Lea, Minn.

W.M.C. Pfc.; Seminar



EVANGELINE CADY
Blackduck, Minn.

Maplewood Choir; Band; Girls' Ensemble; Girls' Triple Trio; Assoc. Editor Maple-Log; Feature Editor Northerner '43; Vice President Crescit Eundo '44; Seminar

EDNA JENSEN
Hutchinson, Minn.

W. M. C. Sergeant; Prayer Band Leader '43; Honor Ten



DOROTHY DENNIS
Minneapolis, Minn.

W. M. C. Staff Sergeant; Maplewood Choir; Choir Board; Editor-in-Chief Northerner '44; Proofreader Northerner '43; Secretary Seminar

MARJORIE KALDAHL
Brecken, Minn.

W. M. C. Pfc.; Maplewood Choir; Band; Girls' Triple Trio; Girls' Ensemble; Assoc. Editor, Northerner '43; Prayer Band Leader '43 and '44



JOSEPH NOZAKI
Heart Mountain, Wyoming

M.C.C.; Maplewood Choir; Assistant Editor, Maple Log; Athletic Secretary, Knights of East Hall; House Committee; Honor Ten

ARVA QUANCE
St. Paul, Minn.

Maplewood Choir; Sec. K. D. L. '43



JOANNE VANDERLAAN
Roseau, Minn.

Northerner Reporter '43; Sunshine Band; Seminar

LORRAINE VANDERLAAN
Roseau, Minn.

Seminar

LORRAINE WALLER
Minneapolis, Minn.

M. C. C. Staff Sergeant; Maplewood Choir; Band; Girls' Triple Trio; Girls' Ensemble; Northerner Music Editor '43

MILTON FREDRICKSEN
Hutchinson, Minnesota

M. C. C. Staff Sergeant; Maplewood Choir; Band; East Hall Band; Feature Editor Northerner '44

EVELYN CLEMONS
Minneapolis, Minn.

President Literature and Correspondence Band; Colporteur Band; Seminar

ADELINE HEGLUND
Minneapolis, Minn.

M.C.C.; Maplewood Choir





RUTH NAUSTDAHL
St. Louis Park, Minn.

W. M. C. Staff Sergeant; President
Crescent Eunde '44; Seminar



CAROL RUDER
Minneapolis Minn.

W.M.C. Staff Sergeant; Maplewood
Choir; Editor-in-Chief Maple-Log; Assoc.
Editor Northerner '43; Vice President
K.D.L. '43

ERNEST AULICK
St. Paul, Minn.

M.C.C. First Sergeant; Maplewood
Choir; Assoc. Editor Maple-Log; Vice
President K. E. H. '43; House Commit-
tee; Seminar; Honor Ten

DORIS ANDERSON
Verndale, Minn.

Honor Ten; W. M. C.; Northerner
Alumni Editor '43
Honor Ten; W.M.C. Corporal; Northerner

MURIEL MCLEAN
Minneapolis, Minn.

Maplewood Choir; Girls' Ensemble;
Girls' Triple Trio; Seminar

IVAS SWEETEN
Verndale, Minn.

Band; Prayer Band Leader; Ass. Leader
Sunshine Band

LOUWANA JOHNSON
Howard Lake, Minn.

W. M. C.; Prayer Band Leader '43 and
'44; Seminar; Honor Ten

NED LE BARD
Stillwater, Minn.

M.C.C. Master Sergeant; Maplewood
Choir; Band; East Hall Band; Seminar;
Honor Ten



TED ANDREASEN
Springfield, Ill.

M.C.C. Staff Sergeant; Maplewood Choir;
Band; East Hall Band; Seminar



DONNA WADSWORTH
Brainerd, Minn.

W.M.C. Pfc.; Maplewood Choir; Maple-
Log Editorial Staff; Girls' Ensemble;
Seminar; Honor Ten



GLORIA OLSON
Minneapolis, Minn.

W.M.C. Staff Sergeant; Maplewood
Choir; Typist Northern '43; Seminar

BONNITA HAGEL
Glenwood City, Wisconsin

Colporteur Band; Seminar

MARIE MUSTA
Hutchinson, Minn.

W. M. C. Staff Sergeant; Maplewood
Choir; Northern Reporter '43; Seminar



DOROTHY HARRINGTON
Milton, Wisconsin

Prayer Band Leader '43 and '44;
Seminar



CLEORA SHOCKLEY
Eattle Lake, Minn.

Seminar; Sunshine Band



LENARD FRYE
Hinckley, Minn.

Prayer Band Leader; Seminar; Litera-
ture Band

HATTIE BRIGGS
Salol, Minn.

Sec.-Treas. Northern '43 and '44; Sec.-
Treas. Maple Log; Sec.-Treas. Crescit
Eundo '43; Sec.-Treas. M. V. '43; Prayer
Band Leader '43 and '44; Honor Ten



Juniors

Class Officers

President Dean Christensen
Vice President . . . Gladyce Erickson
Secretary Dorothy Kaldahl
Treasurer Philip Roland
Sergeant-at-arms. Stanley Skadsheim
Class Sponsors . . . Mrs. Holbrook
 Mr. Ford

(First Row)
 Lois McTaggart
 June Shaver
 Arlene Nelson
 Mavis Emmerson
 Philip Roland
 Gladyce Erickson
 Dean Christensen
 Dorothy Kaldahl
 Stanley Skadsheim
 Bela Lane
 Eva Beyer
 Betty Bliss
 Marion Zummach
 Dorothy Anderson
 Berniece Struck (Not in picture)

(Center Row)
 Mardelle Rosenthal
 Pat LaRochelle
 Doris Berlin
 Arliss Lundberg
 Virgie Steiner
 Genive Byer
 Merie Campbell
 Harriet Howe
 Tresa Johnson
 Tillie Martin
 Evelyn Hansen
 Doris Baird
 Donna Livingston
 June Johnstone
 Sylvia Nordin

(Back Row)
 Truxton Flanchard
 Jim Peterson
 Billy Nelson
 Arlee Torkelsen
 Malcolm Campbell
 Gordon Engen
 Charles Erickson
 Wayne Burgess
 Willard Zima
 Jim Buckley
 Marvin Reynolds
 Ervin Dedeker
 Eugene Hansen
 Ralph Peterson
 Richard McKellip
 Don Burgeson

Sophomores

Class Officers

President Dwain Ford
Vice President Avis Mueller
Secretary Vera Kisor
Treasurer Evangeline Wold
Sergeant-at-arms . . . Gerald Gelford
Class Sponsors Miss Gibson
 Mr. Kirk

Left to right (front row)

Violet Beyer
 Phyllis Larsen
 Phyllis Tomeraasen
 Mable Brown
 Lois Nelson
 Avis Mueller
 Dwain Ford
 Vera Kisor
 Evangeline Wold
 Gerald Gelford
 Mary Long
 Verna Roberts
 Patricia Erwin

(center row)

Joyce Norin
 Lois Pettis
 Lucille Kaldahl
 Evelyn Kaldahl
 Betty Jo Syvertson
 Dorothy Russell
 Serena Hansen
 Junavieve Denler
 Jeanette Christensen
 Grace Steiner
 Betty Lou Sorensen
 Mable Saunders
 Helen Dale

(back row)

Herbert Senne
 Calvin Berthlesen
 Loyle Blom
 Victor Iversen
 Mike Musta
 Don Crofoot
 Paul Zummach
 Roger Hellie
 Herbert Lidner
 John Woods
 John Davis
 Neil Pegel
 Ralph Martin





Freshmen

Class Officers

President Earl VandeVere
Vice President . . . Silmar Skibsted
Secretary Beverly Wykoff
Ass. Secretary . . . Elaine Thompson
Treasurer Milton Burghart
Sergeant-at-arms . . . James Russell
Class Sponsors . . . Miss Ingram
 Mr. Davis

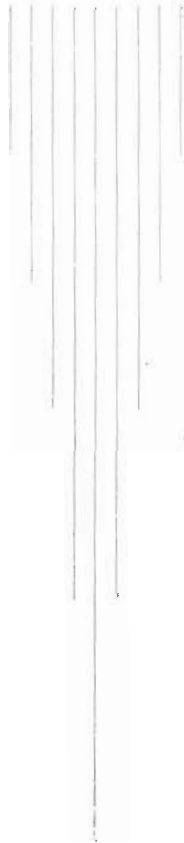
Left to right (front row)

Lorraine Staples
 Gladys Osvold
 Dorothy Lee
 Milton Burghart
 Silmer Skibsted
 Beverly Wykoff
 Earl VandeVere
 Elaine Thompson
 Marjorie Owens
 Florence Musta
 Romona Dahlquist
 Claire Burke

(back row)

Adeline Pierson
 Arthur Carlson
 Norman Osvold
 Paul Frensene
 Clayton Johnson
 Vernon Hansen
 Harry Johnstone
 Herbert Smith
 Jon Ashton
 Robert Ley
 Robert Erwin
 Grace Bergvall
 James Russell (not in picture)

Activities



Religion



"Character building is the most important work ever entrusted to human beings; and never before was its diligent study so important as now. Never was any previous generation called to meet issues so momentous: never before were young men and young women confronted by perils so great as confront them today."--E. G. White, Education, p. 225



Truly the Sabbath School lesson is the heart of Bible study!



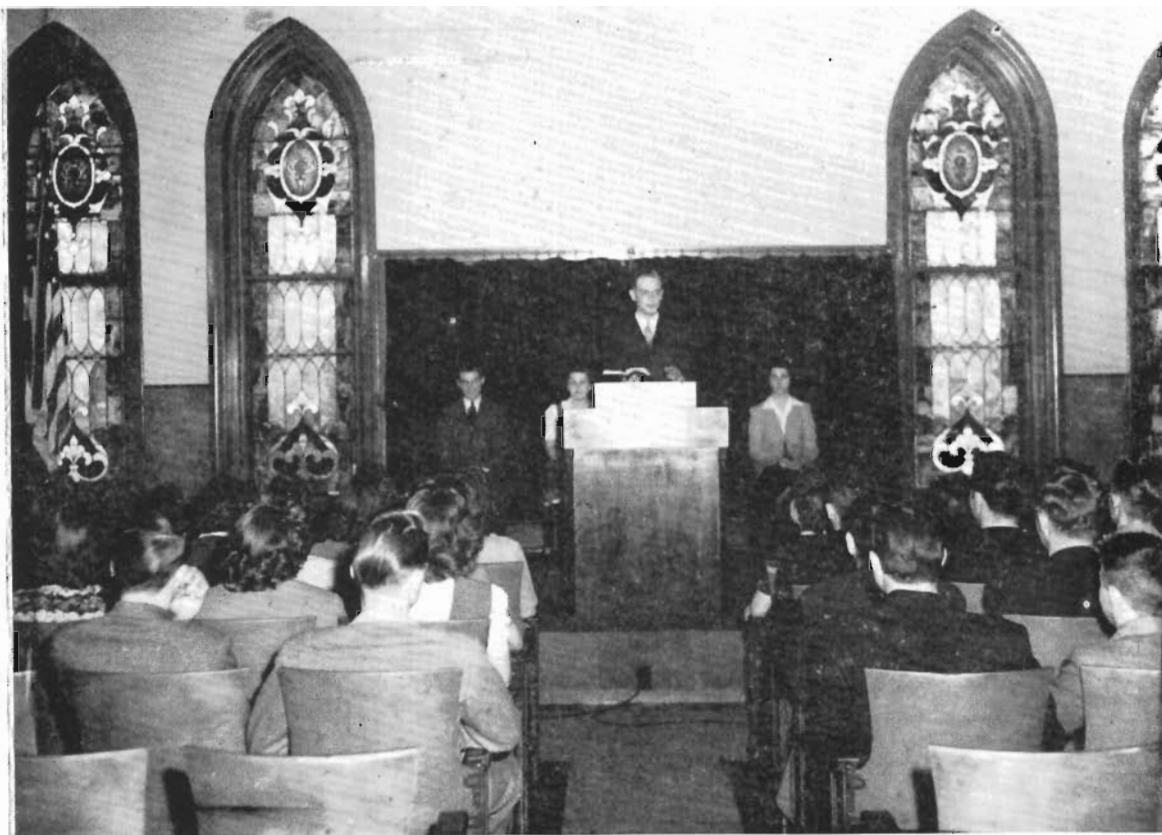
Bringing the Gospel to every home is the objective of the Colporteur band.



Progressive class work prepares for greater efficiency. Miss Walker and her Companion group.



Mr. Curry directs the activities of the Literature and Correspondence Band.



The Seminar

Training for Service

BELIEVING sincerely that he that winneth souls is wise, the faculty and students of Maplewood Academy have entered gladly the activities which develop the individual for service.

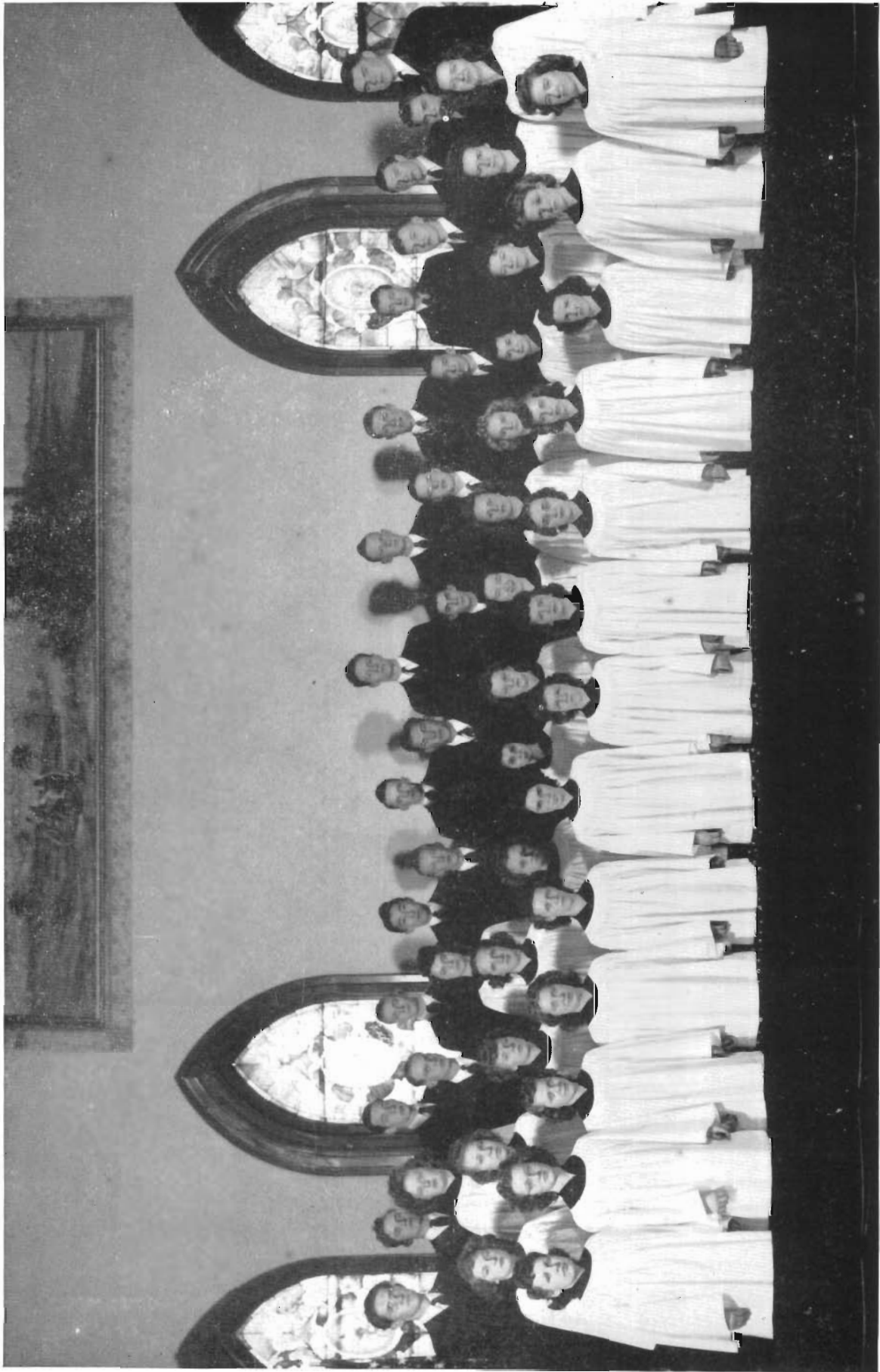
The Sabbath School is a listening post where God's message is heard; the Missionary Volunteer organization is a practice room for those who wish to grasp God's messages quickly and relay them with force.

In the Seminar, those who speak learn to give our doctrinal subjects logically; and those who listen become more thoroughly acquainted with the groundwork of our Faith.

The Literature and Correspondence Band has mailed out 50,000 tracts and papers and personally distributed in the neighboring towns 7,000 more. Who can know the result?

Many earnest requests have been sent to God from the prayer bands, where groups of students have met to discuss and solve personal problems. As a result of the persevering efforts of prayer bands and the personal work of students and teachers, twenty-one have been baptized during the school year.

Evidences of the presence of God's spirit have developed in a noticeable manner from time to time.



The Maplewood Choir
Adrian R. M. Lauritzen, Director

Music

Maplewood's "International Nine"

Folk songs from many lands, and costumes to complete the picture.



East Hall Band

Music for Open House and student campaigns



The Girls' Ensemble

Presented a Christmas cantata and sang for several church services.





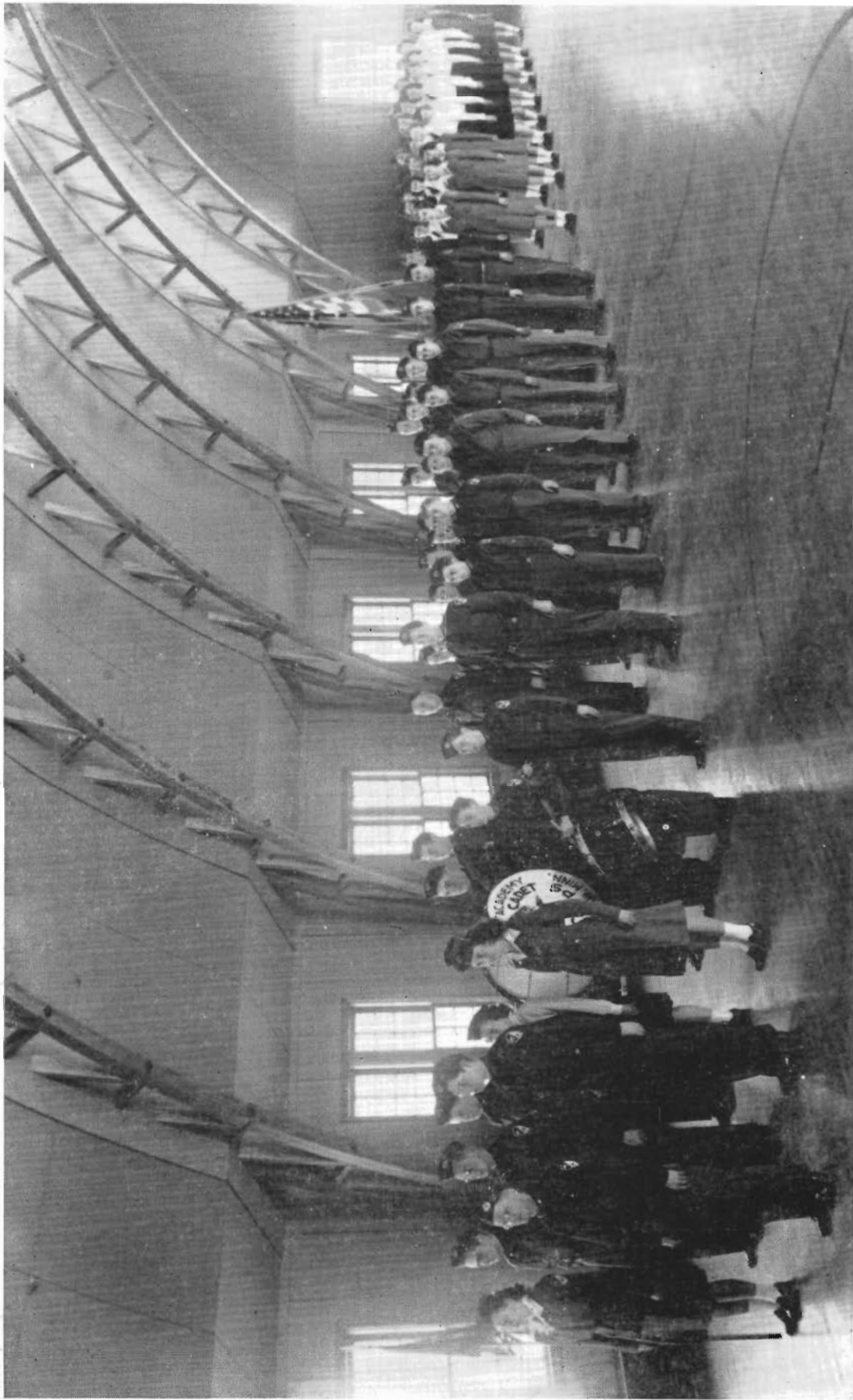
★ ★ Service Page ★ ★

Algan Anderson
 Alvin Ange
 Charles Foster Ashton
 Robert Bakke
 Rolland Barnhart
 Orville Berg
 Charles Bergvall
 Melvin Bergvall
 Einar Berlin
 LeRoy Beyer
 Raymond Beyer
 Oliver Bolduc
 Larry Burgeson
 Darrel Cain
 Clarence Carnaham
 Clayton Chaffee
 Bill Courtney
 Harry Crooks
 Ellen Dailey
 Thomas Dakken
 Rodney Dale
 George Davis
 George Dedeker
 Kent Dickinson
 Alva Englehart
 Bernhard Englehart
 Wendell Ford
 Maurice Fredricksen
 Leonard Grace
 Henry Green
 Jack Hanson
 John Hebbel
 Jay Hendrickson
 Ronald Hershey
 William Kaiser

Bill Koenig
 Waverly LeBard
 Lloyd Lockert
 Richard Lund
 Elmer Martinson
 Ralph Martinson
 Robert Merickel
 Charles Merickel
 Arden Nelson
 Guy Nelson
 Louis Nelson
 Lloyd Osborne
 Clarence Pittelkow
 Preston Pogue
 Harvey Quance
 Lloyd Roberts
 Robert Roderick
 Robert Saunders
 Lyle Schmidt
 Burrill Senne
 Horace Senne
 Erwin Stickney
 Glen Stickney
 Fobian Strand
 Gordon Struck
 Elmer Swanson
 Frank Uphoff
 LeRoy Paul Vail
 Lee Waggnar
 Chester Wahlen
 Kenneth Wahlen
 Vernon Wahlen
 Richard Wresch
 Jack Zima
 Kenneth Zummach

Because of names being added daily, it is impossible to have this Service Roster complete.





*Maplewood Academy Medical Cadet Corps
Cadet 2nd Lt. Wilbur Holbrook, Commanding Officer*

Color Guard, and Drum and Bugle Corps



Company in Line Formation



Litter Squads



First Aid Demonstration



Offices



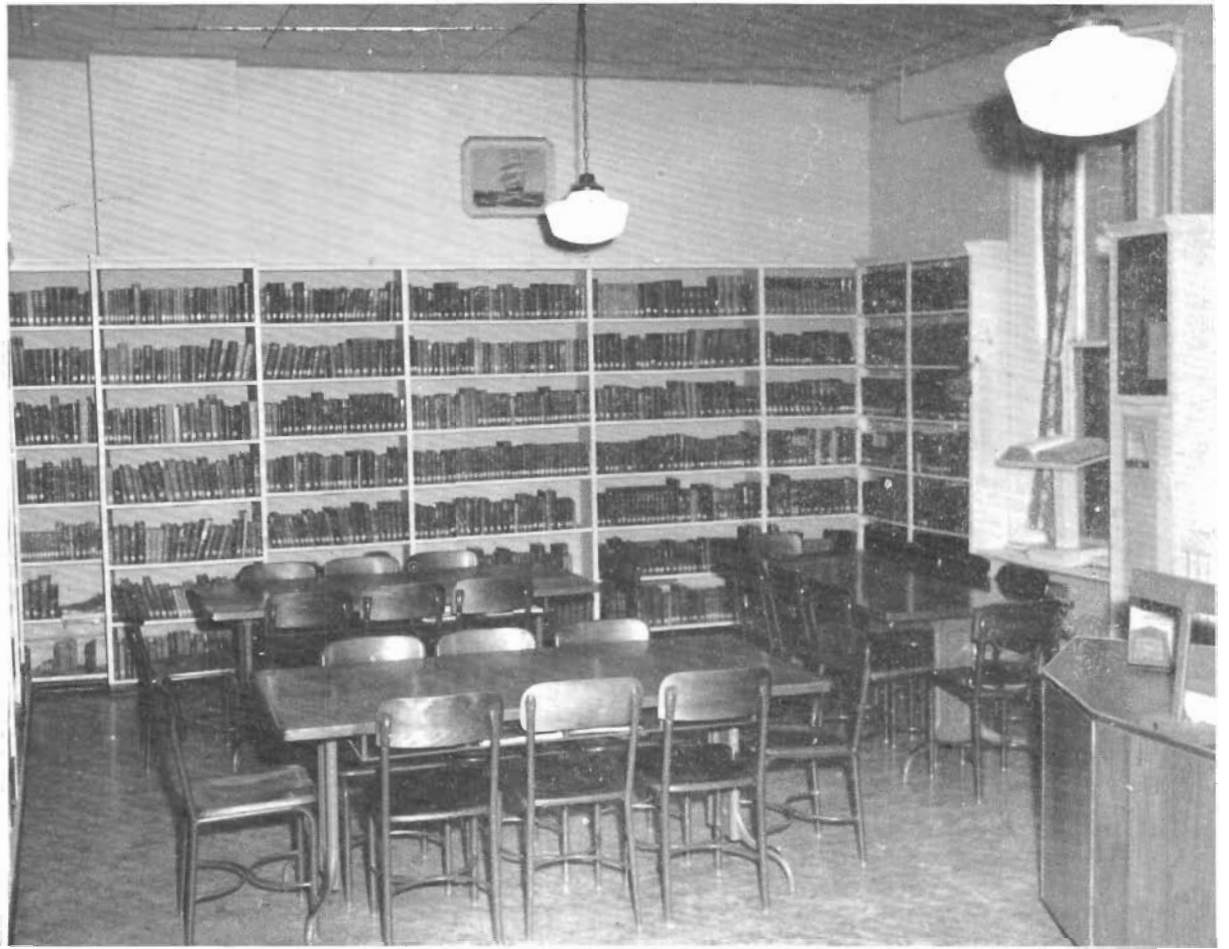
From Professor Bieber's office comes the administrative guidance of the whole school.



The business office keeps an accurate check on finances --- and accepts checks too!!



Not only does Elder Axelson counsel in the spiritual activities of the school, but he also measures the scholastic standing of every student.



West end of the Library

An ever - growing
department is the
Library, the heart
of the school.



*Learning the geography
of the latest war news*



West Hall

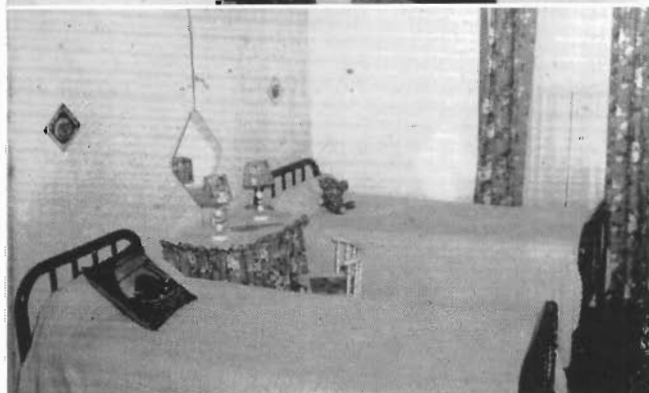
"Miss Ingram Speaking---"



The Girls' Parlor



A "Spread room" repast



Prize room at open house

East Hall

Dean Holbrook in his office



A student room



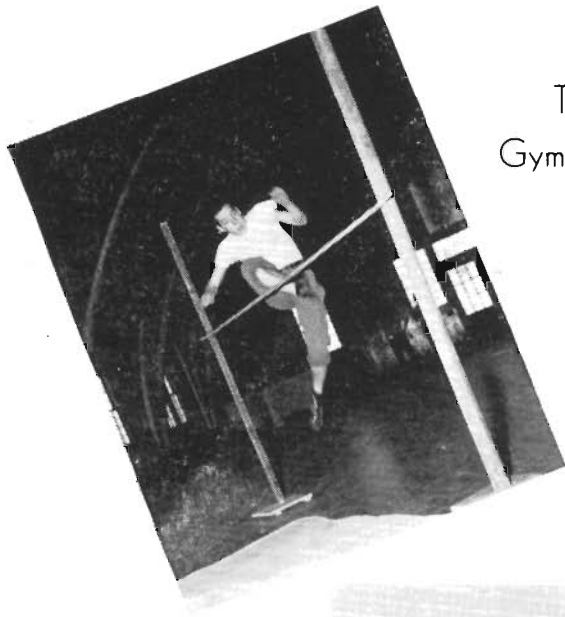
The Boys' Parlor



Another student room
in East Hall

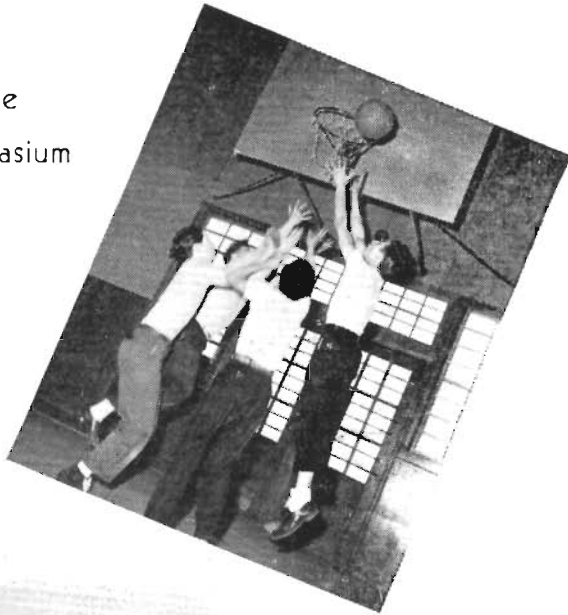


Sports



Ted made it!!

The
Gymnasium



A Basket!!



Volley Ball



Roller Skating

Fun



Play ball !!

The
Holbrooks
Ski



and

Recreation



Skating



Hockey

Sunshine
and
high
Spirits

Class
picnics



Labs

Physics



Chemistry



Home Economics



School in Action

Business staff members of the 1944 "Maple Log" plan a successful campaign.

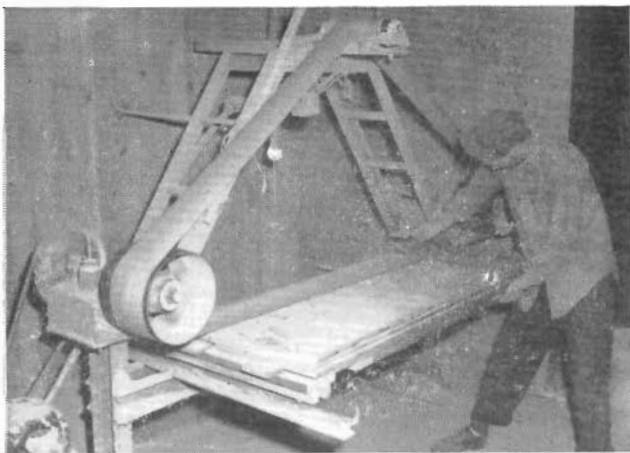


"Hurry to your next class!"



Three squares a day --- and how the scales groan !!





Industry

Roger Hellie at the belt sander in the Craft Shop.



John Davis and Silmar Skibsted fire up in the battle against Old Man Winter.



Mr. Curry gives dictation to Carol Ruder in the Bindery office.



A corner of the Maplewood Press.

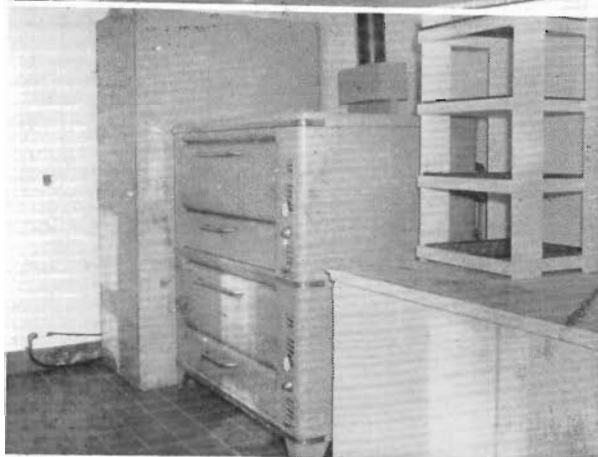
They call this room the "Powder Puff" because it is here that the girls tidy up while on kitchen duty.



Miss Gibson says that it is bean-dumpling soup.



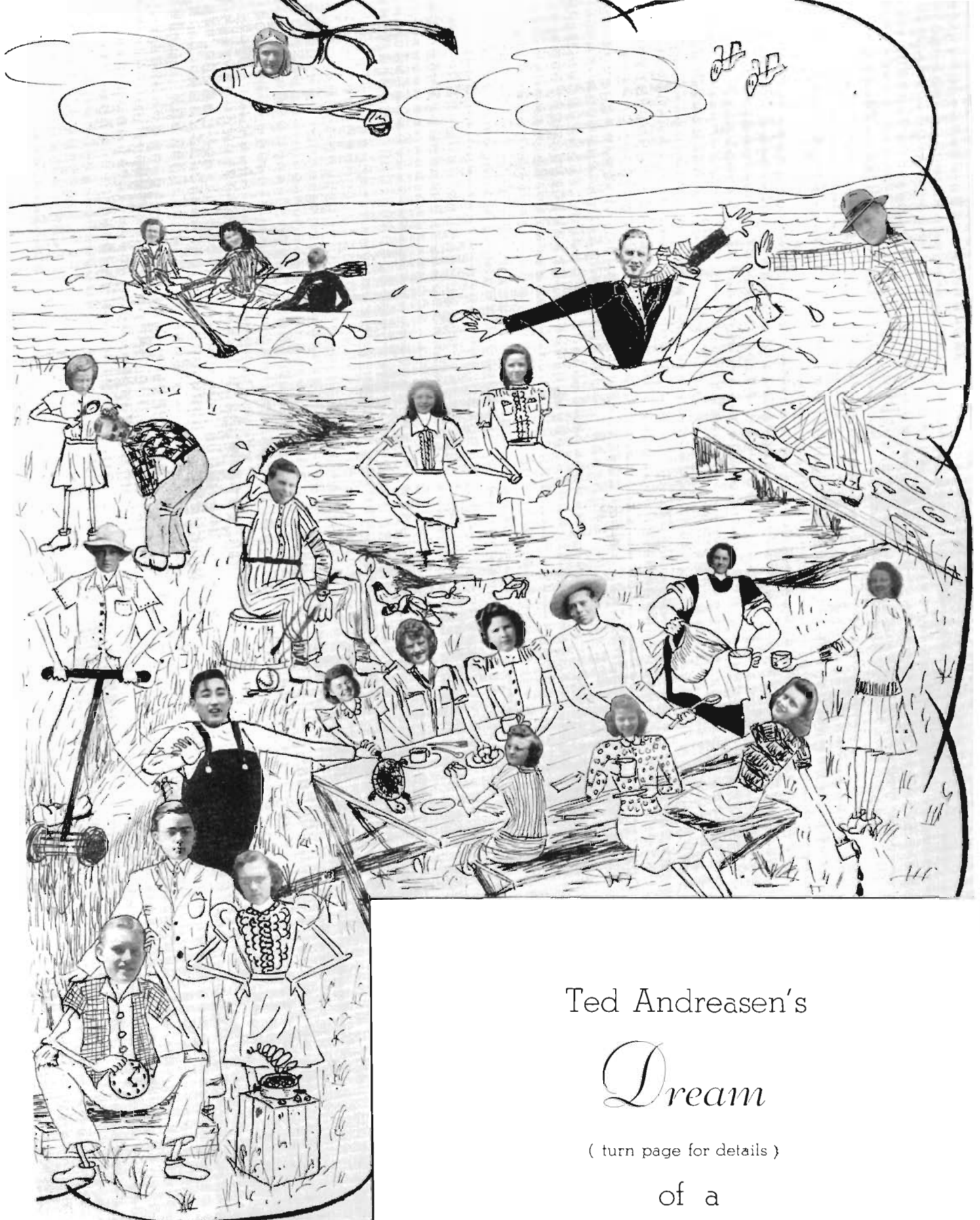
250 loaves of bread, 45 dozen rolls, buns, cookies, cakes, pies---quite a record each week!



A dinner line in the Cafeteria.







Ted Andreassen's

Dream

(turn page for details)

of a

Northerner - Mob's Picnic

Explaining Ted's Dream of the Picnic

The Northerner---1st Semester

EDITORIAL STAFF

Editor in Chief—looking at Marie Musta's Snake—Arleen VandeVere
Associate Editors—next to truck driver—Maryalice Hansen
—under picnic table—Lenard Frye
—on truck cab (left)—Carol Ruder
Alumni Editor—gazing at turtle—Marjorie Kaldahl
Feature Editor—rowing boat (at right)—Evangeline Cady
Art Editor—mowing grass—Gordon Engen
Music Editor—watching clock repair—Lorraine Waller
Proofreader—in truck cab (second from left)—Dorothy Dennis
Reporters—holding two snakes—Marie Musta
—only man at picnic table—James Peterson
—wading in water—Joanne Vanderlaan
Typists—on truck cab (right)—Gloria Olson
—in boat (at right)—Arlene Nelson
Editorial Adviser—pouring punch—Miss Lois J. Walker

BUSINESS STAFF

Business Manager—sitting in lake—Mr. O. E. Simon
Circulation Manager—having scalp examined—Hartley Berlin
Associate Circulation Manager—in boat (at left)—Marion Zummach
Advertising Manager—photographing Ernie and cow—Dean Christensen
Secretary-Treasurer—about to stick toe in water—Hattie Briggs

The Northerner--2nd Semester

EDITORIAL STAFF

Editor in Chief—in truck cab between Marjorie and Beverly—
Dorothy Dennis
Associate Editors—by Lorraine watching Malt—Stanley Skadsheim
—pouring punch on ground—Doris Baird
Alumni Editor—next to Jim at table—Doris Anderson
Feature Editor—repairing alarm clock—Milton Fredricksen
Make-up Editor—driving truck—Ervin Dedeker
Music Editor—waving handkerchief in cab—Beverly Wykoff
Art Editor—in boat (at right)—Herbert Lidner
Proofreader—in boat (at left)—Doris Berlin
Reporters—pursuing truck—Arlee Torkelsen
—“more punch, please!”—Avis Mueller
—wiping sweat off neck—Bill Zima
Typists—laughing at turtle—Dorothy Harrington
—hanging in tree—Lois McTaggart
Editorial Adviser—Pouring punch—Miss Lois J. Walker

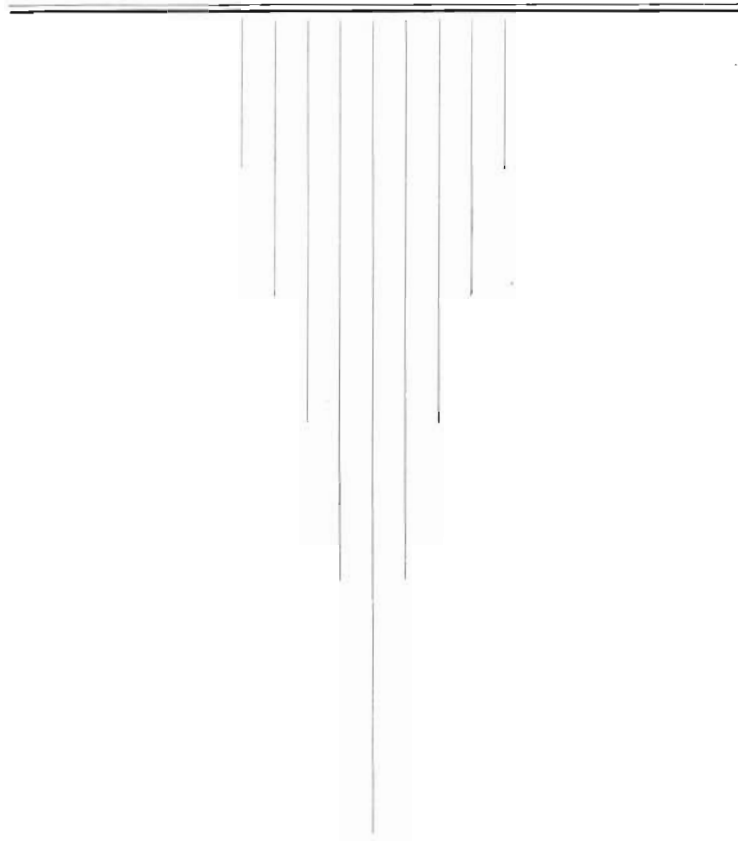
BUSINESS STAFF

Business Manager—sitting in lake—Mr. O. E. Simon
Circulation Manager—in boat (at left)—Marion Zummach
Advertising Manager—photographing Ernie and cow—Dean Christensen
Associate Advertising Manager—in Helicopter—Jon Ashton
Secretary-Treasurer—about to stick toe in water—Hattie Briggs

(Continued on page 60)

TIME MARCHES ON

Features















Time Marches On

SEPTEMBER

- 8 Bewildering day when 172 enrolled.
- 11 "Handshake" in the gymnasium.
- 15 Crescit Eundo Organizes.
- 18 Annual progressive hike with refreshments in North Woods.

OCTOBER

- 4 Police instructor Dittmore speaks.
- 5 Examinations(not mental but physical).
- 9 Boys hike overnight and sleep in north woods.
- 10 Seniors of '44 sit at honor table for Annual Booster Club Banquet.
- 12 Maplewood Choir organized.
- 23 Liers presents trained otters.
- 27 Boys win parlor fund campaign.
- 29 Hutchinson Historian, Mr. Beach speaks.
- 30 *Special* entertainment—spooky, and dirty, but fun!!

NOVEMBER

- 13 First student musical recital.
- 20 Morris gives lyceum program "On the Beam".
- 18-23 Elder W. L. White presents series of lectures and gives exhibition.

DECEMBER

- 10 "Sub Chasers" victorious in Northerner campaign.
- 12 Girls' Open House.
- 14 Promotions given to members of M. C. C.
- 15 Librarians have special supper in library.
- 17 Girls' Ensemble presents "Bethlehem".
- 19 Choral Candlelight Service.
- 20 Winners of Northerner campaign spend afternoon at Lake Marion.

JANUARY

- 11 Elder C. V. Anderson, conference president speaks.
- 14-15 Elder Duffield weekend speaker.
- 16 Northerner staff has feed.
Organization of classes.
- 20-21 President Cossentine, from Union College, visits.
- 21 Seminar organizes.
- 22 Mr. Alfred E. Waller, violinist, and Lorraine Waller,
soprano soloist, present recital.
- 27 Nights of East Hall show their rooms.
- 28 Journalism class takes educational visit in Minneapolis.
- 29—
- Feb. 5 Colporteur institute led by Elder P. D. Gerrard.

FEBUARY

- 5 Senior prayer band organizes.
- 6 Howard Pierce Davis, news commentator, presents
analysis of the news.
- 8 Girls' Ensemble gives program for Womens' Auxiliary in
Hutchinson.
- 9 Pictures taken for Maple Log.
- 15-16 School board holds meeting.
- 27 Sophomores coming out.
- 29 Freshmen coming out.

MARCH

- 4 Senior coming out.
- 10-18 Spring week of prayer.
Baptizmal class organizes.
- 15 Afternoon spent in sleigh-riding and roller skating.
- 20 Printing class goes to St. Paul and Minneapolis
- 28 Junior coming out.
- April 1 Courtesy week.

APRIL

- 1 Courtesy program.
- 6-10 Spring Vacation!
- 14 "Featherweights" win Maple Log campaign.
- 15 Maplewood Choir gives program in the chapel.
- 16 Maplewood Choir sings at the Hutchinson Congregational
Church.

- 20 Sponsors entertain Juniors.
- 21-22 Maplewood Triple Trio sings in Duluth, Cloquet, and Brainerd.
- 23 Maplewood Choir sings at Glencoe.
- 27 Seniors entertained in the gymnasium.
- 28-29 Maplewood Triple Trio sings in St. Paul and Minneapolis.
- 30 Maplewood Choir sings in Minneapolis at Simpson Church.

MAY

- 6 June Johnstone gives piano recital.
- 7 Annual school picnic.
- 8 Harvest Ingathering field day—\$1129.00.
- 11 Junior-Senior picnic.
- 13 Lew Johnson shows snakes in lyceum program.
- 14 "Maple Log" prize winners entertained.
- 19 Consecration Service.
- 20 Baccalaureate.
- 20 Commencement.

Time Marchs On

(Continued from page 59)

The Maple Log

EDITORIAL STAFF

Editor in Chief—on truck cab (left)—Carol Ruder
 Associate Editor—rowing boat (at right)—Evangeline Cady
 —with cow—Ernie Aulick
 Assistant Editors—photographing Ernie and cow—Dean Christensen
 —holding turtle—Joe Nozaki
 —in truck (right)—Donna Wadsworth
 —examining Hartley's scalp—Claire Berke
 —waving apple (at table)—Betty Binder
 —looking at Marie Musta's snake—Arleen VandeVere
 Faculty Associate—playing piano—Mr. A. Lauritzen

BUSINESS STAFF

Circulation Manager—with trumpet—Truxton Blanchard
 Associate Circulation—in truck (left)—June Shaver
 —about to drink punch—Mavis Emmerson
 —rowing boat (at left)—Dwain Ford
 Treasurer—about to stick toe in water—Hattie Briggs
 Business Manager—pushing Mr. Simon into water—Prof. D. J. Bieber

THE STORY OF REDWOOD

“In this REGION

there is a great abundance of these trees and because none of the expedition recognizes them, they are named Redwood from their color.” In his daily chronicle of the progress of Don Gaspar de Portola’s expedition, Frey Juan Crespi had just set down the date, Tuesday, October 10, 1769. On that day, according to written record, white men gazed for the first time “over plains and low hills, well forested with very high trees of a red color, not known to us.”

Frey Juan did not note, and did not know, that he had discovered one of the natural wonders of the world—a living forest which dates back to the dinosaurs—victim in nature’s great battle for survival.

Geologists say that the Redwood forest is hundreds of years old. It once extended over much of the world. It resisted earth-rending changes in climate and in the earth’s crust. It saw mountains and seas created and disappear. It succumbed only to the great sheets of glacial ice which covered a large part of North America, Europe and Asia. In a small area along the coast of California which the glaciers failed to reach the Redwood forest escaped the ice and continued to grow, thus providing a direct, living link with pre-glacial ages.

California Redwood Distributors Ltd.

New York

CHICAGO

New Orleans

Three Years Instead of Four

Wise use of the courses offered by the Home Study Institute makes it possible for ambitious young people to go through the academy in three years.

Correspondence study enables one to save time and money, and get a new thrill from the visits of the postman and the friendly guidance of a devoted teacher.

Our latest catalogue is yours for the asking. Write for it now, and begin to lay plans for a pleasant and profitable summer.

HOME STUDY INSTITUTE

Takoma Park

Washington 12, D. C.



*Special
Attention*
To Orders For
MEN and WOMEN
In The
SERVICES



Weddings--Groups--Home Portraits
Publicity Copies--Applications
Commercial
Children's Portraits Our Specialty
Open Three Evenings a Week And Sundays By Appointment
THREE LOCATIONS

2633-35 Nicollet Ave. - - - CO lfax 3119
315 14th Ave. S. E. - - - GL adstone 2398
6 W. Sixth St., St. Paul Toll Charge
CEdar 0883

Photo Craft
STUDIOS

*Congratulations to the
Senior Class of 1944*

E. A. Vandy

Merchandise Mart Bldg.

Chicago, Ill.

Autographs

UNION COLLEGE

Reverent in scholarship
Seeking the truth;
"Fervent in spirit,
Serving the Lord;"
Training for service
At home or abroad.

*Fifty-four years of service and
achievement*

You will enjoy Union College this year.

Write to

Ruby E. Lea

Lincoln 6, Nebraska.

*Congratulations
to the
Seniors of '44*

**MINNESOTA
CONFERENCE OF S. D. A.**

1854 Roblyn Avenue

St. Paul,

Minnesota

This is what a book can do;
Take you where the skies are blue,
Take you where the laughter's ringing,
And the eyes with love aglow,
Take you out of care and trouble
And the griefs which seem to double,
Take you far from wintry weather
And the fields of drifted snow.

MINNESOTA BOOK & BIBLE HOUSE

More Than Fifty Years of Service

1854 Roblyn Ave.

St. Paul, Minn.

This is what a book can do:
Build and strengthen you anew,
Give you fortitude and courage
When above a storm appears;
It can fashion and remake you
So that fate can never break you,
It can comfort and console
When your eyes are wet with tears.

When you patronize the **Maple-
wood Press**, you are helping
worthy boys earn part of their expenses
in getting a Christian Education.

This Annual was printed with student help.

The **Maplewood Press**
An Industry of Maplewood
Hutchinson, Minnesota

The engravings for the "Maple Log" were made by
Buckbee--Mears, St. Paul, Minn.



MAPLEWOOD BOOKBINDERY

Serving Schools and Libraries

REINFORCED REBINDING

Bookbinders • Hutchinson, Minnesota • Booksellers

G. W. CURRY, SUPERINTENDENT

LELAND TORKELSEN, SALESMAN

Dear Friends:

We thank you for your patronage in the past. We guarantee our binding to be just as durable as ever. We carry a large stock of materials and supplies and are equipped to take care of your needs.

If you are planning on becoming a student at Maplewood we may have a place for you in the bindery plant. You will find the work interesting and a good trade to know. During the summer you will be able to earn a very substantial credit for the following year.

Visitors are Welcome!

Yours sincerely,

G. W. Curry, Supt.

● EDUCATIONAL MATERIAL SERVICE ●

Index

Anderson, Elder C. V.—1354 Roblyn Ave., St. Paul, Minn.....	12
Anderson, Doris—Route 3, Verndale, Minn.....	22, 36, 37, 45, 49
Anderson, Dorothy—Route 1, Onamia, Minn.....	10, 24, 34, 52
Andreasen, Theodore—940 So. 1st St. Springfield, Ill.....	10, 23, 32, 33, 34, 36, 37, 42, 47, 48
Ashton, Jon—509 E. Water St. Austin, Minn.....	26, 33, 34, 49
Aulick, Ernest—141 4th Ave. So., So. St. Paul, Minn.....	22, 32, 36, 37, 48, 53
Axelson, Elder Arthur—Hutchinson, Minn.....	14, 38
Baird, Doris—Hinsdale, Ill.....	24, 32, 36, 37, 45, 49, 52
Bergvall, Grace—2314 5th Ave. West, Hibbing, Minn.....	26, 34, 42
Berke, Claire—1976 Inglehart Ave., St. Paul, Minn.....	26, 42, 49
Berlin, Doris—Pennock, Minn.....	10, 24, 32, 34, 42, 48, 54, 56
Berlin, Hartley, Hutchinson, Minn.....	31, 32, 36, 45, 49, 53, 54, 55
Berthelson, Calvin—Esterville Iowa.....	25, 53
Beyer, Eva—Route 2, Welch, Minn.....	24, 36, 37, 52, 57
Beyer, Violet—Route 2, Welch, Minn.....	25, 30, 44
Bieber, D. J.—Hutchinson, Minn.....	13, 38, 45, 49, 54
Binder, Betty—Tolstoy, So. Dakota.....	19, 32, 33, 49, 55
Blanchard, Truxton—318 E. Water St. Austin, Minn.....	24, 30, 32, 33, 34, 36, 37, 45, 48, 53, 54
Bliss, Betty—Shakopee, Minn.....	24, 30
Blom, Loyle—Middle River, Minn.....	25, 30, 32
Briggs, Hattie—Salol, Minn.....	23, 38, 44, 45, 49
Brown, Mabel—Route 2, Grand Rapids, Minn.....	25, 42, 57
Buckley, James—1007 Newton Ave. N. Minneapolis, Minn.....	24, 36, 37, 44, 54, 57
Burgeson, Donald—1513 6th Ave. So. Anoka, Minn.....	24, 32, 36, 37, 53, 54, 57
Burgeson, Ruby—1513 6th Ave. So. Anoka, Minn.....	52
Burgess, Wayne—Clam Falls, Wis.....	10, 24, 36, 37
Burghart, Milton—Route 5, Sleepy Eye.....	26
Byer, Genive—Route 2, Welch, Minn.....	24, 52
Cady, Evangeline—Blackduck, Minn.....	10, 20, 30, 32, 33, 34, 40, 42, 47, 49, 54, 55
Campbell, Elder M. V.—501 Forest, Minneapolis, Minn.....	10, 12
Campbell, Malcolm,—5412 Colfax Ave. So. Minneapolis, Minn.....	24, 30, 32, 47, 53
Campbell, Merie—Route 3, Hinckley, Minn.....	24, 56, 57
Carlson, Arthur—Route 2, Cloquet, Minn.....	26, 45, 53, 55
Christensen, Betty—Hutchinson, Minn.....	14, 34
Christensen, Dean—Route 1, Pipestone, Minn.....	24, 31, 32, 33, 34, 36, 37, 44, 48
Christensen, Jeanette—Route 1, Gray, Iowa.....	10, 25
Clemons, Evelyn—Hutchinson, Minn.....	21, 30, 31
Crowfoot, Donald—Minneapolis, Minn.....	25, 36, 37
Curry, G. W.—Hutchinson, Minn.....	15, 30, 46
Curry, Lorna—Hutchinson, Minn.....	15
Dahlquist, Ramona—Inver Grove, Minn.....	10, 26, 32, 45
Dailey, Marian—Red Lake Falls, Minn.....	19, 30, 32, 33, 34, 42, 49
Dale, Helen—Remer, Minn.....	25
Davis D.—Hutchinsen, Minn.....	14, 44, 57
Davis, John—306 Garfield St. Austin, Minn.....	25, 30, 36, 37, 46, 53, 55, 57
Dedeker, Ervin—Route 3, Hastings, Minn.....	24, 33, 36, 37, 48, 57
Denler, Junavive—1902 W. 7th St., Faribault, Minn.....	25, 56
Dennis, Dorothy—252 West Franklin Ave. Minneapolis, Minn.....	20, 30, 31, 32, 36, 37, 42, 43 47, 48, 52, 54, 55
Emmerson, Mavis—2223 Johnson St. N. E., Minneapolis, Minn.....	10, 24, 32, 34, 36, 37, 42 45, 49, 53, 56
Engen, Gordon—Hutchinson, Minn.....	24, 30, 32, 36, 37, 49
Erickson, Charles—Long Prairie, Minn.....	24, 30, 36, 37, 45, 47, 53, 57
Erickson, Gladyce—1204 Norwood St., Brainerd, Minn.....	24, 30, 31, 44, 55
Erwin, Patricia—502 E. Water St., Austin, Minn.....	10, 25, 36, 53, 54, 55

Erwin, Robert—502 E. Water St., Austin, Minn.	26, 31, 33, 36, 37, 45, 53, 54
Ford, Dwain—Hutchinson, Minn.	25, 32, 33, 34, 44, 45, 48
Ford, Paul—Hutchinson, Minn.	15, 44, 57
Fransene, Paul—627 6th Ave., Two Harbors, Minn.	26, 30, 43, 53, 54
Fredricksen, Milton—130 Grove St., Hutchinson, Minn.	21, 32, 33, 34, 36, 37, 40, 42, 43, 49
Frye Lenard—Hinckley, Minn.	10, 23, 49, 54
Gelford, Gerald—Bayport, Minn.	25, 57
Gibson, Leota—Hutchinson, Minn.	14, 47
Hagel, Bonnita—Glenwood City, Wis.	23
Hansen, Eugene—Bowman, No. Dak.	24, 36, 37, 54, 57
Hansen, Evelyn—275 Marshall St., St. Paul, Minn.	24
Hansen, Maryalice—Route 2, Fergus Falls, Minn.	19, 43, 48
Hansen, Serena—Route 2, Fergus Falls, Minn.	25, 30, 31, 44
Hansen, Vernon—Bowman, No. Dak.	28, 30, 57
Harrington, Dorothy—Milton, Wis.	23, 43, 49
Heglund, Adeline—2709 Stevens Ave., Minneapolis, Minn.	10, 21, 32, 36, 37, 44
Hellie, Roger—141 N. Dale St., St. Paul, Minn.	25, 33, 37, 46, 57
Holbrook, Henrietta—Hutchinson, Minn.	15, 34, 43, 54
Holbrook, Marjorie—Hutchinson, Minn.	10, 19, 32, 33, 34, 36, 37, 43, 44
Holbrook, Wilbur—Hutchinson, Minn.	15, 33, 34, 35, 41, 43, 54
Howe, Harriet—Dodge Center, Minn.	21
Ingram, Ruth—Hutchinson, Minn.	15, 42, 45
Iverson, Victor—Mahtomedi, Minn.	25, 57
Jensen, Edna—Hutchinson, Minn.	20, 36, 37, 52, 54, 57
Johnson, Clayton—Route 2, Howard Lake, Minn.	23, 30, 47, 57
Johnson LouWana—Route 2, Howard Lake, Minn.	22, 36, 37, 44, 45
Johnson, Tresa—612 So. Maple St., Watertown, So. Dak.	24, 36, 37, 54, 55
Johnstone, Harry—Beach, No. Dak.	26, 32, 53, 54, 55
Johnstone, June—Beach, No. Dak.	24, 32, 33
Kaldahl, Dorothy—Brooten, Minn.	10, 24, 32, 33, 34, 36, 37, 52, 54
Kaldahl, Evelyn—Sedan, Minn.	25
Kaldahl, Lucille—Sedan, Minn.	25, 53
Kaldahl, Marjorie—Brooten, Minn.	10, 20, 32, 33, 34, 36, 37, 49, 53, 54, 55
Kirk, Everett D.	15, 54, 57
Kisor, Vera—Morristown, Minn.	25, 32, 44, 56
Lane, Bela—Anoka, Minn.	24, 30, 31, 36, 37
LaRochelle, Patricia—Hutchinson, Minn.	24, 32, 33, 42, 56
Larsen, Phyllis—Route 1, Morgan, Minn.	25, 44, 52, 53
Lauritzen, Adrian—Hutchinson, Minn.	6, 14, 40, 48, 53
Lauritzen, Evelyn—Hutchinson, Minn.	6, 14, 34
LeBard, Ned—1417 W. Olive St.—Stillwater, Minn.	22, 32, 33, 34, 36, 37, 42, 54
Lee, Dorothy—24 North 63rd Ave., Duluth, Minn.	26, 30
Ley, Robert—Litchfield, Minn.	26, 45, 57
Lianci, Herbert—242 Fulton Ave., Jersey City, N. J.	25, 43, 49, 57
Livingston, Donna—Route 3, Fairmont, Minn.	24, 30, 45
Long, Mary Jean—Hutchinson, Minn.	25, 44
Lundberg, Arliss—2817 Girard Ave. So., Minneapolis, Minn.	10, 24, 32, 33, 42, 52, 56
Martin, Laurie—Sauk Centre, Minn.	19, 30, 36, 37, 44, 56
Martin, Ralph—Sauk Centre, Minn.	25, 30, 31, 57
Martin, Tillie—Sauk Centre, Minn.	24, 30, 36, 37, 42, 55, 56
Mueller, Avis—Route 3, Princeton, Minn.	25, 36, 37, 49
Musta, Florence—123 10th Ave. N., So. St. Paul, Minn.	26, 30, 32, 36, 37
Musta Marie—123 10th Ave. N. So. St. Paul, Minn.	23, 30, 32, 36, 37, 44, 43
Musta, Michael—123 10th Ave. N., St. Paul, Minn.	25, 32, 36, 37, 53, 54
McClip, Richard—1024 6th Ave. So., Faribault, Minn.	10, 24, 36, 37, 57
McLean, Muriel—2110 E. 35th St., Minneapolis, Minn.	22, 32, 33, 45
McTaggart, Lois—Route 1, Campbell, Minn.	24, 34, 36, 37, 44, 48, 52
Naustdal, Ruth—2848 Alabama Ave., St. Louis Park, Minn.	10, 22, 30, 31, 33, 37, 42, 52
Nelson, Arlene—101 Clifton Ave., Minneapolis, Minn.	24, 32, 34, 36, 37, 49, 52, 53, 55
Nelson, Billie—Hutchinson, Minn.	24
Nelson, Lois—Route 3, Clearlake, Wis.	25
Nordin, Sylvia—7437 No. Chicago Ave., Portland, Ore.	24, 36, 37, 47

Nozaki, Joseph—23-3—E, Heart Mountain, Wyo.	21, 32, 42, 49,57
Nozaki, Joseph—23-3 O Heart Mountain, Wyoming	21, 32, 42, 49, 57
Olson,Gloria—Glencoe, Minn.	23, 32, 36, 37, 42, 43, 52; 54
Ortner, Prudence—Hutchinson, Minn.	38
Osvold, Gladys—634 Laurel St., Cloquet, Minn.	26, 33, 32
Osvold, Norman—634 Laurel St., Cloquet, Minn.	26, 45, 53, 55
Owens, Marjorie—720 Mound Ave. Mankato, Minn	26, 45
Pagel, Niel—Remer, Minn.	25, 30, 31, 54
Petersen, James—Box 125, Loma Linda, Calif.	24, 31, 36, 37, 44, 49
Petersen, Ralph—16 E. 15th St., Minneapolis, Minn.	24, 36, 37, 45, 57
Pettis, Lois—Hutchinson, Minn.	25
Pettis, Norma—Hutchinson, Minn.	36, 37, 44
Pierson, Adeline—Gatzke, Minn.	26
Quance, Arva—781 Seminary,, St. Paul, Minn.	21, 32, 55
Reynold's Marvin—New York Mills, Minn.	24, 31, 36, 37, 44, 45, 57
Roberts, Verna—48 No. Dale St., St. Paul, Minn.	25, 44, 53, 55
Roland, Philip—Bayport, Minn.	24, 30, 36, 37, 39, 47, 57
Rosenthal, Mardelle—Rosenthal Lane, Austin, Minn.	24, 32, 33, 34, 36, 37
Ruder, Carol—200 E. 27th St., Minneapolis, Minn. 22, 30, 32, 36, 37, 40,42,46,47,48,55	
Russell, Dorothy—Route 3, Verndale, Minn.	25, 30, 36, 37, 52, 55; 57
Russell, James—Hewitt, Minn.	26, 53, 56
Saunders, Mabel—Hutchinson Minn.	25, 44, 52
Sayles, Donna—Route 1, Cosmos, Minn.	20, 32, 44
Senne, Herbert—Mound, Minn.	25, 30, 32, 36, 37, 54, 57
Shaver, June—Michawake, Indiana	24, 45, 48
Shockley, Cleora—Route 2, Battle Lake	23, 36, 37
Simon, O. E.—Hutchinson, Minn.	14, 49, 53, 55, 57
Skadsheim, Stanley—Hutchinson, Minn.	24, 36, 37, 44, 49
Skibsted, Silmer—Como Sta. Route 5, St. Paul, Minn.....	26, 31, 45, 46, 53, 54
Smith, Betty—Clayton, Wis.	20, 36, 37, 52
Smith, Herbert—2519 Emerson Ave. So. Minneapolis, Minn.....	26, 33, 36, 37
Sorenson, Betty Lou—Hutchinson, Minn.	25, 44
Staples, Lorraine—Route 1, Two Harbors, Minn.	26
Steiner, Grace—135 Clay St., Anoka, Minn.	25
Steiner, Virgie—135 Clay St., Anoka, Minn.	24, 52
Stickney, Leon—Route 1, Staples, Minn.	20, 36, 37, 43, 53, 54 55
Struck, Berniece—882 Hatch Ave., St. Paul, Minn.	24, 55, 56
Swan, Roscoe—Hutchinson, Minn.	15, 38, 53
Sweeten, Ivas—Verndale, Minn.	10, 22, 34, 47, 52
Syvertson, Betty—Route 2, Whalan, Minn.	25, 30, 34, 57
Thompson, Elaine—1701 Sunset St., Albert Lea, Minn.	26
Thompson, Loretta—1701 Sunset St., Albert Lea, Minn.....	20, 36, 37, 47, 54, 55
Thomeraasen Phyllis—522 So. 40th St. Omaha, Neb.	25, 44
Thomeraasen, Warren—552 So. 40th St., Omaha, Neb.19,32,33,34,36;37;42;43;53;55	
Torkelsen Arlee—Hutchinson, Minn.	24,32,33,34,36,44,48;53
Torkelsen, Leland—Hutchinson, Minn.	15, 53
Vanderlaan, Joanne—Route 3, Roseau, Minn.	21, 44, 45, 49
Vanderlaan, Lorraine—Route 3, Roseau, Minn.	21, 44
VandeVere Arleen—Hutchinson, Minn.	10, 19, 26, 32, 33, 34 48, 54
VandeVere, Earl—Hutchinson, Minn.	26, 34
Wadsworth, Donna—1313 So. 8th St., Brainerd, Minn.	23, 32, 33, 36, 37, 48, 55
Walker, Lois J.—Hutchinson, Minn.	14, 30, 39, 49
Waller, Lorraine—510, Irving Ave. No., Minneapolis, Minn. 10,21,30,32,33,34,36,37	
	45,49,52,54,55
Wold, Evangeline—Hutchinson, Minn	25, 34
Woods, John—Battle Lake, Minn.	25, 45, 56, 57
Wykoff, Beverly—65 So. 11th St., Minneapolis, Minn.	26, 45, 48
Zima, Bill—2512 Bryant Ave. So. Minneapolis Minn. 24,30,31,33,34,36,37,44,49,52,55	
Zuberbier, Doris—Badger, Minn.	
Zummach, David—Hutchinson, Minn.,	54
Zummach, Marion—Hutchinson, Minn.	10, 24, 36, 37, 48
Zummach, Paul—Hutchinson, Minn.	25, 36, 37, 56, 57

