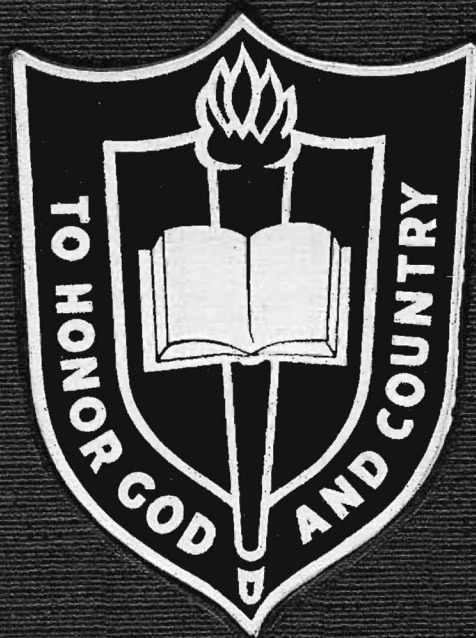


# MAPLE LOG

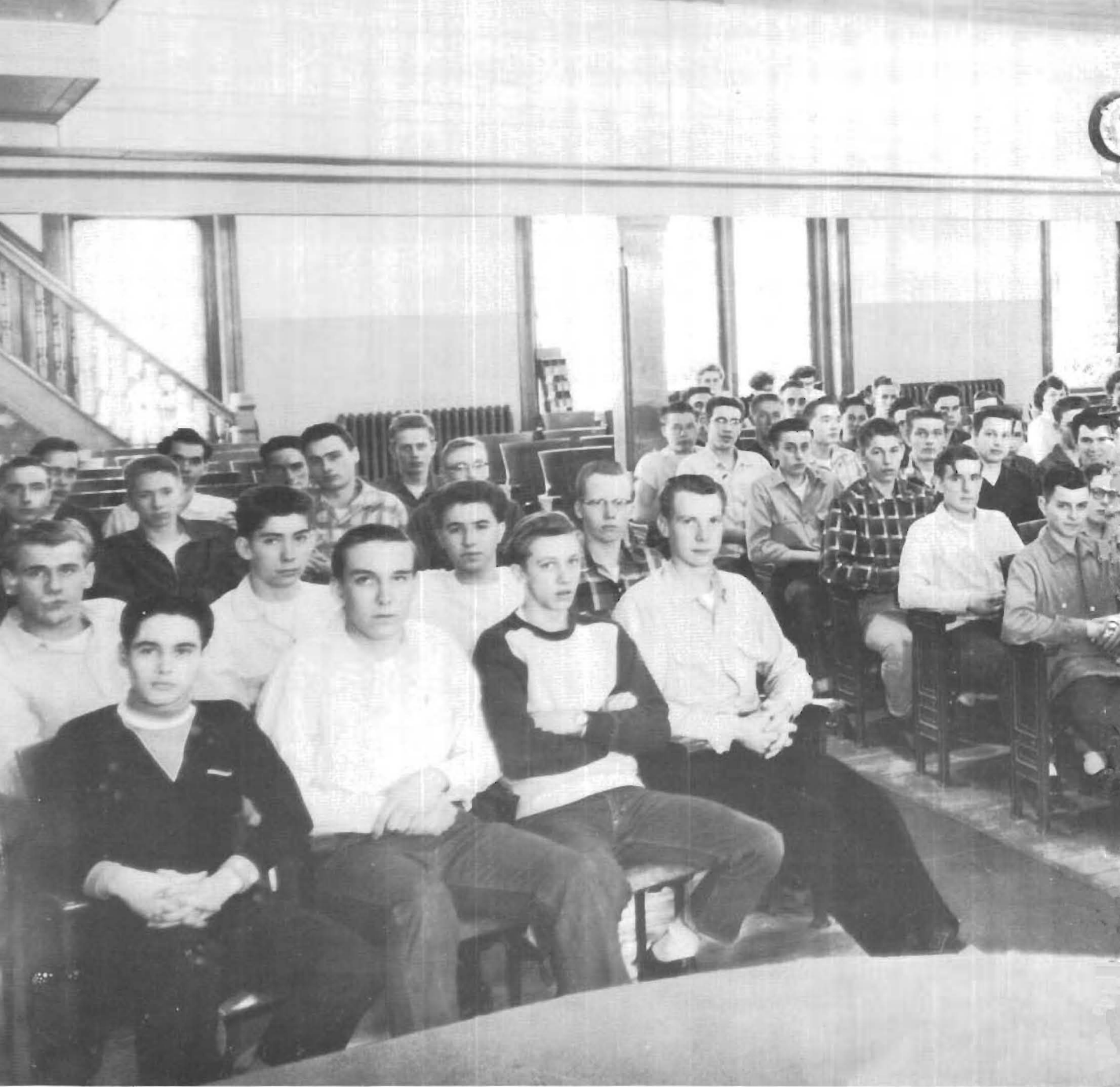
1956







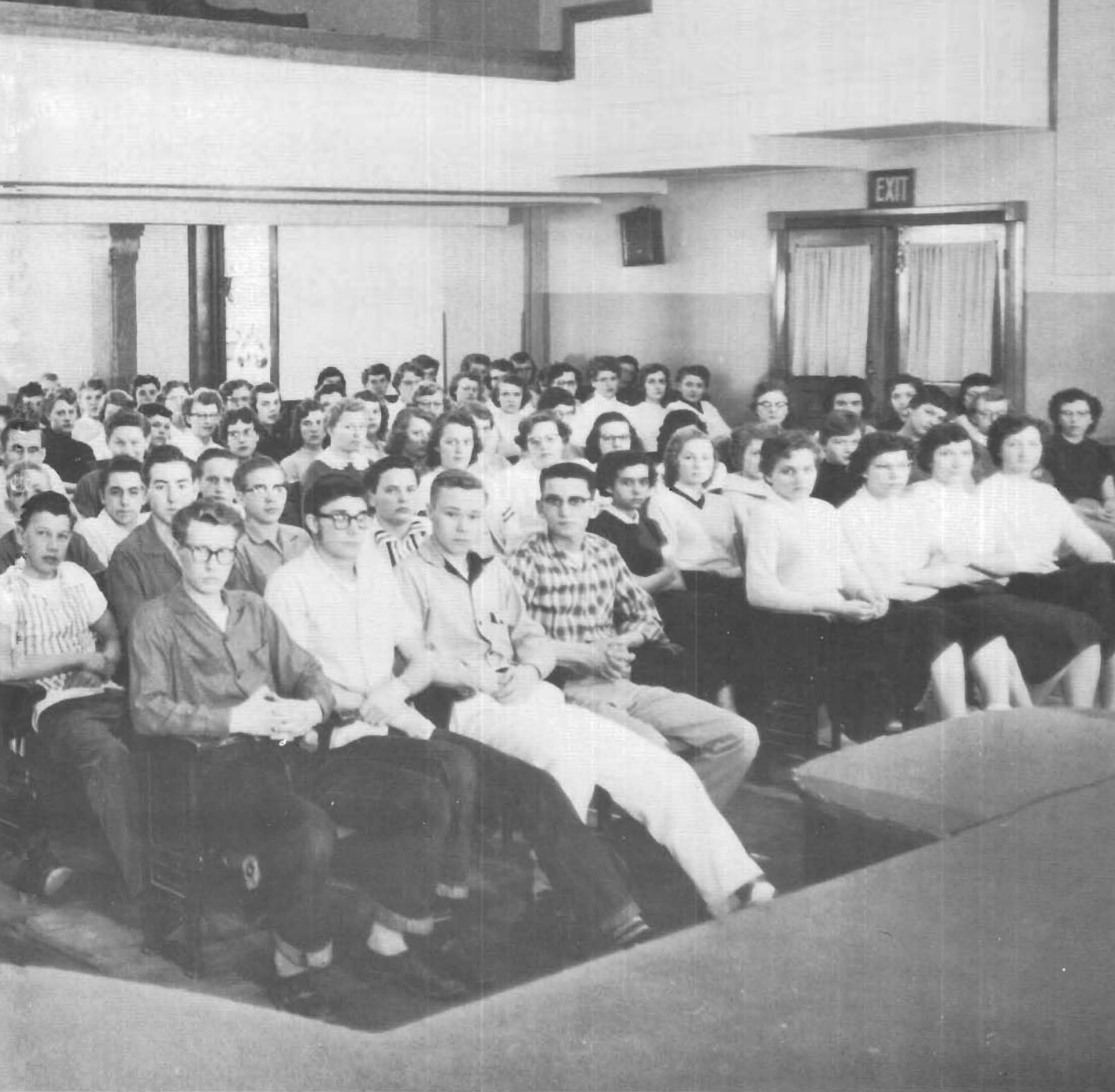
**REVEILLE**



*"with such an army . . . of . . .*

*how soon the message of a crucified, risen, and soon-coming*





*youth rightly trained . . .*

*Saviour might be carried to the whole world."*

E. G. White



## *Training Headquarters*

Behind all operations and maneuvers at our training headquarters are the key personnel. The constant growth of our school and its strengthened resources indicate the sound judgment of its executive board.

## *Key Personnel*



E. R. Osmunson, Chairman  
 B. G. Butherus, Secretary  
 E. A. Christensen  
 Boyd Olson  
 Harry Peterson  
 R. H. Nightingale  
 W. H. Sutherland, M. D.  
 Ole Grundset, M. D.  
 H. L. Maddox  
 K. D. Johnson  
 L. H. Netteburg  
 J. M. Mershon  
 E. E. Perry  
 Clifford Christensen

# . . . Decorating

Mr. and Mrs. Floyd P. Gilbert

Because of their loving service to Maplewood and to its students during the past eight years,

*their lives that reflect Christ whom they serve,  
their acts of service beyond the call of duty,  
their smiles and ever present sense of humor,  
their loyalty to principle,*

We, the Maple Log staff, take great pleasure in dedicating this, our 1956 annual, to you, Mr. and Mrs. Gilbert, as a form of Distinguished Service Honor.



Salute





"Take a letter, Miss Christensen."

"With such an army of workers as our youth, rightly trained, might furnish, how soon the message of a crucified, risen, and soon-coming Saviour might be carried to the whole world!"

The youth striving to receive this training must be a praying group. The man on his knees is the tallest man in the world, for his head is above the stars.

This reveals the value of Christian education for youth who are being trained under the marching orders of Prince Immanuel. Only as we yield our wills to His, can we become the "good soldiers of Jesus Christ."

This pattern of character building is the objective of Maplewood Academy. To make each student a soldier in God's great harvest field is the ideal we endeavor to inculcate in each student. We invite youth throughout Minnesota to share with us these ideals, and then to share them with others.

B. G. Butherus, Principal

## *Commanding Officers*



J. WILLIAM BASSHAM, B. A.

*Dean of Boys  
American History  
World History*



ELIZABETH LOTHIAN, B. A

*Dean of Girls  
Algebra  
Geometry*



MRS. B. G. BUTHERUS, B. A.

*Registrar  
English  
Home Economics*

F. P. GILBERT, M. A.

*Physics  
Chemistry  
Biology*



MRS. F. P. GILBERT, B. A.

*Librarian  
English*



JOYCE LEONHARDT, B. S.

*Typing  
Shorthand  
Bookkeeping*





LYNDON E. DAVIS, B. A.

*Accountant  
Medical Cadet Corps  
Driver's Education*

JAMES MERCER, B. A.

*Director of Music  
Voice  
Band Instruments*



JOYCE CHRISTENSEN, B. S.

*Secretary to the Principal  
Piano  
Organ*



DEAN TORKELSON

*Bookbindery Superintendent*



DONALD SHERWOOD, B. S

*Craftshop Superintendent  
Agriculture*

LELAND TORKELSON

*Bookbindery Salesman*





MRS. LAWRENCE BURGESSON  
*Matron*



LAWRENCE BURGESSON  
*Maintenance Director  
Bible*



JESSE ADAMS  
*Farm Manager*

OLIVER A. BOLDUC

*Ass't. Bookbindery Superintendent*



WILLIAM BARTLETT, B. S.

*Ass't. Craftshop Superintendent*

MRS. HERBERT CHRISTENSEN

*Laundry Supervisor*



forward  
march







GARY HYMEL, President  
Maple Log Staff '54; Glee Club;  
Prayer Band leader; Northernner  
ass't. editor '54; Boys' Club vice-  
president '55; M.C.C. Cpl.



BERNICE KERKHOFF, Vice-pres.  
Honor Ten; Nurses' Club vice-  
pres.; Girls' Club, sgt.-at-arms,  
'56; Choir; MapleLodians; Girls'  
Sextette.



DIXIE BALLEW, Secretary  
Girls' Club vice-president '54;  
Student Council; Choir; Maple-  
Lodians.



STANLEY TRANA, Treasurer  
Student Council; Boys' Club vice-  
pres. '56; Prayer Band leader;  
Junior Class treas.; M.C.C. Pfc.



ERWIN WARD, Pastor  
Prayer Band leader; Sabbath  
School superintendent '55; Boys'  
Club secretary '55; Student Coun-  
cil; M.C.C. Pfc.



ROBERT ANDERSON,  
Sgt.-at-arms  
Glee Club; Boys' Club vice-pres.  
'56; M.C.C.

## Seniors

### MOTTO

CHRIST OUR CAPTAIN

### COLORS

Red, White, and Black



### AIM

HEAVEN OUR PORT

### FLOWER

Red Carnation

Sponsors: J. W. Bassham and



**GRACE AMUNDSON**  
Girls' Club secretary '55; Band;  
Glee Club; Choir; MapleLodians



**JANICE ANDERSON**  
Glee Club



**WARREN BIEGLER**  
M.C.C.



**BARBARA BITZER**  
Student Council secretary '54;  
Girls' Club vice-president '56;  
Glee Club; Choir



**CLIFFORD BORG**  
M.C.C.



**DARYL BURGHART**  
Prayer Band leader; Northerner  
Staff '55; Band; Glee Club;  
M.C.C. Pfc.



**JIM BURR**  
Prayer Band leader; Seminar;  
Glee Club; M.C.C. Pfc.



**DUANE BUTHERUS**  
M.V. Leader '54; Seminar; North-  
erner editor '56; Student Council  
'56; Band; Choir; Sabbath School  
Orchestra; Senior Quartette; Val-  
edictorian



**RICHARD CARLSON**  
Boys Club president '55, Treas-  
urer '54; Sabbath School Super-  
intendent '56; Prayer Band lead-  
er; Glee Club; Choir; Maple-  
Lodians M.C.C. Sgt. 1st Class



**DONNA CHAPMAN**

M.V. leader '55; Prayer Band leader; Student Council '55; Temperance Club secretary '55



**LEO CHRISTENSEN**

Band; Glee Club; Choir; Maple-Lodians; M.C.C. Cpl. Sabbath School orchestra; Boys' Club secretary '56; Honor Ten



**CAROL DICKIE**

Prayer Band leader; Student Council '55; M.V. leader '55; Temperance Club secretary '55



**LeROY DOCKHAM**

M.C.C.: Seminar.



**DAVID ERICKSON**

Honor Ten; Maple Log staff '56; Northerner ass't. editor '56; Junior Class president; Band; Sabbath School orchestra; Choir; Maple-Lodians; Boys' Club secretary '54; Sabbath School superintendent '55; Student Council '55; M.C.C. Sgt.



**RUTH FARNES**

Prayer Band leader; Girls' Club vice-president '55; Nurses' Club treasurer '54, secretary '55; Choir; Northerner staff '56; Sabbath School Teacher



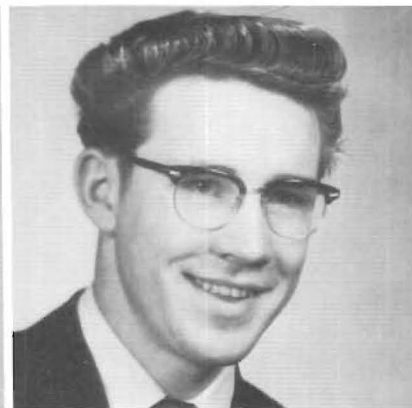
**GEORGE FISCHER**

Honor Ten; Maple Log editor '56; Junior Class pastor; M.V. leader '55; Seminar leader '56; Boys' Club pastor '54; Prayer Band leader '55; Northerner staff '55, '56; Student Council '56; Booster Club vice-pres. '55; M.C.C.; Glee Club; Choir; Band; MapleLodians;



**ORLO GILBERT**

Maple Log ass't. editor '56; M.V. leader '55; Student Council '55; Seminar leader '55; Boys' Club pastor '55; M.C.C. Cpl.; Band; Choir; MapleLodians; Sabbath School orchestra; Senior Quartette; Glee Club



**JEROME HUSET**

Choir; MapleLodians; Prayer Band leader; M.C.C. Sgt.





**DONALD JARNES**  
Prayer Band leader; Junior Class  
Sgt.-at-arms; Boys' Club treas-  
urer '55; Band; Glee Club; M.C.C.  
Sgt. 1st. Class



**RICHARD JENSEN**  
Student Council president '56;  
Prayer Band leader; Band; Choir;  
MapleLodians; M.C.C. 1st Sgt.



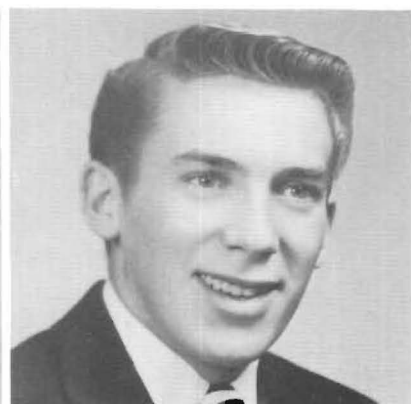
**BARBARA JUDD**  
Prayer Band leader; Choir;  
Nurses' Club vice-president '55;  
Girls' Club treasurer '55; Norther-  
ner staff '55; M.V. Secretary '55



**WILLIAM KANFIELD**  
Boys' Club president '56; Prayer  
Band leader; Band; Choir; Stu-  
dent Council '56; M.C.C.



**JERRY KARR**  
Prayer Band leader; Boys' Club  
Sgt.-at-arms '54; Glee Club;  
Choir; Band



**MERLAND KELSTROM**  
Boys' Club treasurer '56; Prayer  
Band leader; Glee Club; Choir;  
MapleLodians; Senior Quartette;  
M.C.C. Cpl.



**DAVID LAMON**  
M.C.C.



**JOYCE LEHMAN**  
Prayer Band leader



**SANDRA FORD**  
Choir; MapleLodians; Band



**MARY LOU MERICKEL**  
 Northerner staff '56; Booster Club  
 secretary '55; Choir; Maple-  
 Lodians



**ANNA MAE MIHM**  
 Sabbath School Teacher



**FLOYD NELSON**  
 Prayer Band leader; Boys' Club  
 pastor '56; Glee Club; Choir '52



**NORMAN NELSON**  
 Prayer Band leader; Boys' Club  
 pastor '55; M.C.C.



**SHARON ODEGAARD**  
 Maple Log staff '56; Northerner  
 staff '56; Prayer Band leader;  
 Junior Class vice-president; Girls'  
 Club vice-president '54; Temper-  
 ance Club vice-president '55; Stu-  
 dent Council '56; Sabbath School  
 orchestra; Choir; MapleLodians



**ARMOND OLSON**  
 Boys' Club sgt.-at-arms; Glee  
 Club; M.C.C. Pfc.



**BEVERLY PIERCE**  
 Sabbath School secretary '55;  
 Glee Club



**LOU QUAST**  
 Glee Club; Choir; Band



**CLARA ROBERTS**  
 Junior Class secretary; Girls'  
 Club treasurer '55; Northerner  
 staff '56; Nurses' Club president  
 '56, vice-president '54; Booster  
 Club president '55; Student Coun-  
 cil vice-president '56; Prayer  
 Band leader; Salutatorian



**RAYMOND ROBERTS**  
Honor Ten; Prayer Band leader;  
Glee Club; M.C.C.



**SALLY RUSHOLD**  
Choir; MapleLodians; Girls' Sex-  
tette



**CLARENCE STARKS**  
M.C.C.; Seminar



**TED STEINER**  
Honor Ten; Maple Log staff '56;  
Northerner staff '56; Temperance  
Club president '56; Prayer Band  
leader; Seminar; Sabbath School  
Teacher; Glee Club; M.C.C.



**DARLENE SYVERTSON**  
Prayer Band leader; Band; Choir;  
Glee Club



**JERRY THAYER**  
Honor Ten; Northerner staff '56;  
Band; Sabbath School orchestra;  
Glee Club; M.C.C. Sgt.



**BETTY JO WALTERS**  
Honor Ten; Prayer Band leader;  
Northerner staff '56; Temperance  
Club secretary '56; Choir; M.V.  
secretary '55



**RONALD THOMPSON**  
Unclassified

# from Diapers To Diplomas



Diek J.



Daryl



Orlo



Joyce



Mary Lou



Erwin



Dixie



Merland



Floyd



Leo



David L.



Sally



Warren



Stanley



Donna



Jerry T.



Jerry Karr



Sharon



Bob



Clara



Norman



Barbara J.



Don



Duane



Cliff



Armond



Ruthie



Bev P.



Grace R.



David E.



Barbara B.



Jim Burr



Ray



Ted



George f.



Carol D.



Richard C.



# Juniors



SHELDON  
ANDERSON  
President



SANDRA JULIUS  
Vice-president



BEVERLY REYANT  
Secretary



DUANE YTREDAL  
Treasurer



LOLA DAY



MARVIN OSVOLD  
Pastor



CHARLES STINAR  
Sgt.-at-arms



DONNA WYKOFF



GENE ADAMS



PETER ANDERSON



EUGENE  
ANDERSON



RUBY ANDERSON





DONNA AUGE



BEVERLY SMITH



DON BERGLIN



MERWYN BIEGLER



JANET SIPES



JERRY BRANSON



RUTH BYER



MARILYN  
CHAPMAN



VERNON CRAVEN



ROBERT DAHL



EILEEN  
DAHLBERG



KATHLEEN  
SPENCER



FREIDA DENNY



ARLO ELLIS



ELAINE  
FANKHANEL



SHARON FOWLER



HAZEL GARNER



HARVEY  
HAMMERBACK



LLOYD HANSON



ANNABELLE  
HERMANSON



BERNELDA  
JOHNSON



MERLIN JOHNSON



LARRY JONES



BERND  
KRZYKOWSKI



EVELYN LEHMAN



SONJA MOGREN



SHARON OLSON



KARENE ONSTAD



KAREN OPSTAD



RAMONA  
PETERSON



CHARLES PETTY



EDGAR ROBERTS



ADELE ROSSEN



LONETA RUSSELL



Sponsors: MR. LYNDON DAVIS  
MR. JAMES MERCER

# Sophomores



GUENTER  
KRZYKOWSKI  
President



PAT JOHNSON  
Vice-president



JO LAMB  
Secretary



CALVIN HUSET  
Treasurer



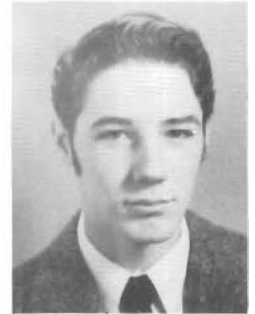
CONNIE  
AMMUNDSEN



CLARENE  
ANDERSON



EUGENE  
BARTLETT



DALE BOYINGTON



EMILIE CARLSON



NANCY CARTER



MARTHA CRAVEN



VIVIAN DAILEY



KERWIN FOWLER



HELEN GODFREY



LINDA INGOLD



EVELYN  
JOHNSON



SHARON JOHNSON



ROBERT LINK



YVONNE  
PETERSON



THURMAN PETTY



JO ANN SMITH



CAROLYN  
SHERWOOD



ROSE VAN RADEN



SHARON WESTIN

CLASS



SPONSORS

MR. AND MRS. DEAN TORKELSON, RONNY AND PATSY

# Freshmen



ESTHER  
ANDERSON



WILLIAM  
ANDERSON



JOAN CAMPBELL



LeROY  
AMUNDSON



TOM CHAFFEE



MODESTA  
CHUQUIMIA



LOIS DITTBERNER



MARLENE  
ELLSTROM



GARY ENGBERG



JAMES  
FANKHANEL



CAROLE HORST





STANLEY JONES



MARVELLA  
JOHNSON



BEVERLY MIHM



MYRNA MOE



PAMELA MANDT



DOROTHY NELSON



DANIEL PARRY



DIANE PRYTS



JEAN PETERSEN



ALVIN WOLCOTT



SHARON WOLF



*Recruits*

*Our  
Youngest*



**attention**





GEORGE FISCHER  
Editor-in-Chief

## The Maple Log Staff

Editor-in-Chief .....	George Fischer
Associate Editor .....	Orlo Gilbert
Advertising .....	David Erickson
Art Editor .....	Ted Steiner
Circulation .....	Sharon Odegard
Editorial Advisor .....	Mrs. F. P. Gilbert
Business Advisor .....	Mr. L. Dean Torkelson
Campaign Manager .....	Miss Joyce Leonhardt



# the NORTHERNER



## The Northerner Staff

Editor ..... Duane Butherus  
 Assistant Editor ..... David Erickson  
 Feature Editors ..... Betty Jo Walters  
    Gary Hymel  
    Ted Steiner  
 Sports Editor ..... Jerry Thayer  
 Music Editor ..... Mary Lou Merickel  
 Reporters ..... Freshmen: Pamela Mandt  
    Sophomore: Jo Lamb  
    Junior: Duane Ytredal  
    Senior: Ruth Farnes  
 Typists ..... Sharon Odegaard  
    Clara Roberts  
    George Fischer  
 Business Manager ..... Jerome Huset  
 Circulation Managers ..... Sandra Julius  
    Don Berglin  
 Advisors ..... Literary: Mrs. Butherus  
    Business: Mr. Davis

DUANE BUTHERUS  
Editor





**RICHARD JENSEN**  
President

# The Student Council

President .....	Richard Jensen
Vice-president .....	Clara Roberts
Secretary .....	Sandra Julius
Treasurer .....	Kerwin Fowler
Maple Log Editor .....	George Fischer
Northerner Editor .....	Duane Butherus
Knights of East Hall Presidents ..	Richard Carlson
	Bill Kanfield
Crescit Eundo Presidents .....	Sandra Julius
	Elaine Fankhanel
Missionary Volunteer Leaders .....	Orlo Gilbert
	Donna Chapman
	Duane Ytredal
	Beverly Reyant
Sabbath School Superintendents ....	Erwin Ward
	Richard Carlson
Activity Representatives .....	Sharon Odegaard
	Gary Hymel
Senior Class Representative .....	Stanley Trana
Junior Class Representative .....	Don Berglin
Sophomore Class Representative .....	Guenter
	Krzykowski
Freshman Class Representative ....	Tom Chaffee
Faculty Sponsors .....	J. W. Bassham
	B. G. Butherus







## *Knights of East Hall Officers*

Seated: Bill Kanfield, Richard Carlson, Presidents.

Standing from left to right: Armond Olson, Norman Nelson, Robert Anderson, Floyd Nelson, Stanley Trana, Don Jarnes, Erwin Ward

## *Nurses' Club Officers*

Clara Roberts, President; Ruth Farnes, Adele Rossen, Bernice Kerkhoff



## *Temperance Club Officers*

Vivian Dailey, Betty Jo Walters, Ted Steiner, President; Sandra Julius, Mr. J. W. Bassham, Sponsor

## *Crescit Eundo Officers*

Evelyn Lehman, Kathleen Spencer, Barbara Bitzer; Elaine Fankhanel, Sandra Julius, Presidents; Bernice Kerkhoff, Barbara Judd, Ruth Farnes, Grace Amundson, Adele Rossen



come ye  
apart



## *The Fall Week of Devotion*

The fact that "Life is what you make it" was brought out very forcibly by Elder E. E. Perry, pastor of the First English Seventh-day Adventist church in Minneapolis.



## *For God and Country . . .*

Colonel Everett N. Dick, Associate Secretary of the General Conference War Service Commission, embodied the purposes, aims, and principles of the Medical Cadet Corps in his address to the student body.

## *The Spring Week of Devotion*

Elder Kimber Johnson, Educational Secretary of the Northern Union conducted a very inspirational week of devotion.





*Seminar*  
*The Church Choir*







*Girls' Prayer Band Leaders*  
*Boys' Prayer Band Leaders*





# Sabbath School Officers

Sandra Julius, Secretary; Richard Carlson, Leader, Erwin Ward, Leader; Beverly Pierce, Secretary



# Missionary Volunteer Society Officers

Standing from left to right: Duane Ytredal, Leader; Vivian Dailey, Betty Jo Walters, Orlo Gilbert, Leader; Beverly Reyant, Leader; Josephine Lamb. Seated from left to right: Mr. Dean Torkelson, Sponsor; Donna Chapman, Leader; Barbara Judd, Miss Joyce Christensen, Sponsor.



in cadence





*The Maplelodians*  
*The Concert Band*



*Senior*

*Quartette*



*Girls*

*Sextette*



on duty







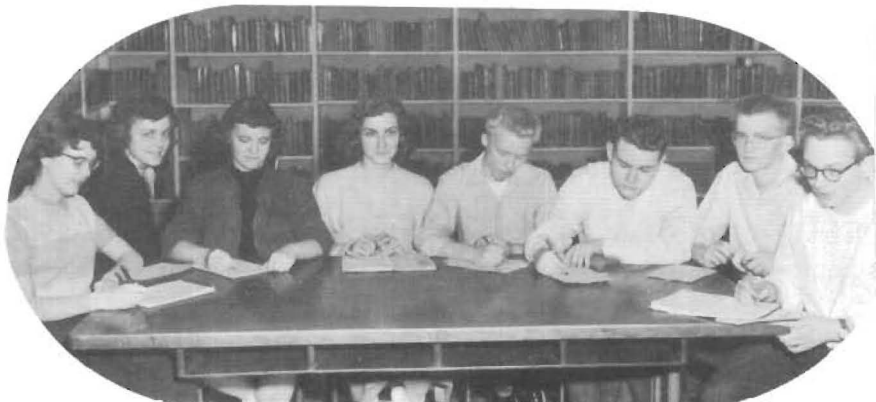
For cashing checks, dispensing stamps, selling books, and answering such queries as, "How much do I owe on my bill?"; the business office staff is "everready."

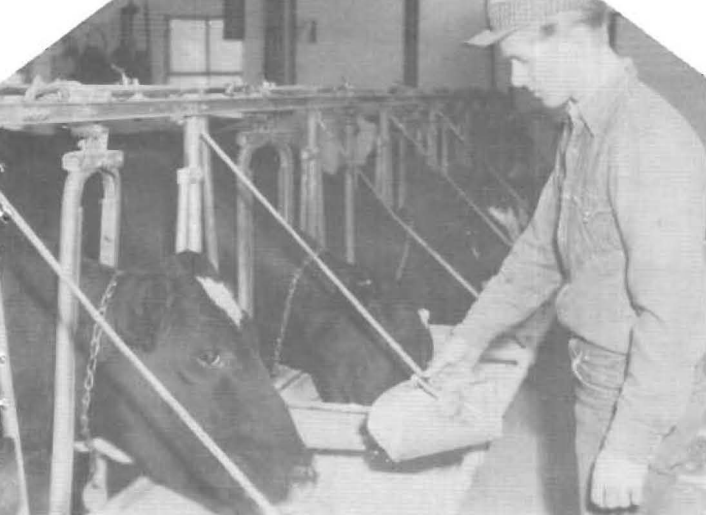
The delightful aroma of Mrs. Burgeson's cooking, as well as its tantalizing taste is always welcome at Maplewood. Bernice Kerkhoff and Sharon Johnson are two of her able assistants.



The maintenance crew under the supervision of Mr. Burgeson keep the grounds and buildings in good repair.

If you receive an examination paper back, liberally "sprinkled" with red checks, chances are that one of Maplewood's efficient readers is responsible.





Leroy Dockham performing one of the necessary daily chores on the modern academy farm.

Jim Burr and Warren Biegler taking advantage of the opportunities provided by the craftshop for working one's way through school.



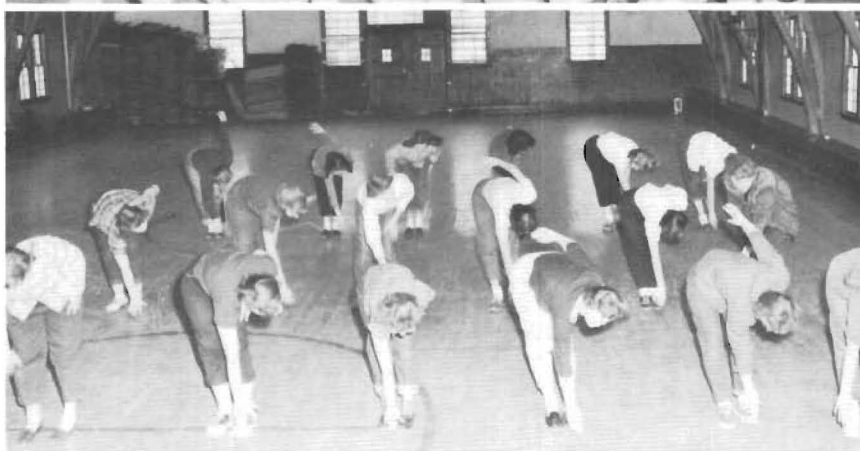
East Hall monitors keep the noise down to a dull roar and the janitors keep the dorm "spic 'n span."

Clothes sent to the M. W. A. laundry come back "sparkling clean" and "wrinkle free."



The West Hall staff helps promote a more pleasant school home atmosphere for the girls.

# at ever





*Promotion Day*

*Maple Log Campaign  
Winners*

Beverly Reyant, Erwin Ward, Leo Christensen



*Temperance Oratorical  
Contest Winners*

Sharon Olson, Duane Butherus, Ted Steiner, George Fischer with Mr. J. W. Bassham, Elder E. F. Finck





MILWAUKEE  
MELODY MASTERS



We Three!!



AT WORK



Friends



MUSCLES



CHYIE-PIE

SILLY



THINKER



XAN

VALENTINE SUPPER



FEEY



MAPLEWOOD  
DISTANCE







1. Ladies Aid via Booster Banquet
2. Cold! ! Mr. Adams?
3. The Taflin Trio
4. Sam Campbell - "The Grand Canyon"
5. "Cherry"
6. Strictly on the level! !
7. Charles Gossel - "Wonder Dogs"
8. Where we diligently (?) study

9. Food Committee - Girls' Open House
10. Jo, Karen, and Donna
11. Look Ma! No Dirt! !
12. Agitated Atoms
13. Bev and Sharon
14. Just Good Friends!
15. Sleepy-time Boy
16. Makin' "Pizza"

Compliments of

**BECHIK PRODUCTS, INC.**

St. Paul

Minnesota

# UNION COLLEGE

**THE COLLEGE**  
of the



**GOLDEN  
CORDS**

INVITES YOU TO TAKE ADVANTAGE OF ITS

## EDUCATIONAL FACILITIES

### Degrees:

B. A. — 16 majors  
B. A. — Religion  
B. S. — 9 majors  
B. S. — Nursing

### Preprofessional Preparation for:

Medicine  
Dentistry  
Physical Therapy  
Medical Technology  
Optometry  
Engineering  
Law

## SPIRITUAL ACTIVITIES

### Sabbath Services

M. V. Society  
M. V. Service Bands  
Weeks of Prayer  
Ingathering  
Ministerial Assn.  
Temperance Society  
Colporteur Club  
Foreign Service Band

## WORK OPPORTUNITIES

Book Bindery  
Broom Shop  
Farm & Dairy  
Furniture Factory  
Laundry  
Press  
Offices

## RECREATIONAL PROGRAM

Lyceum Series  
Musical Programs  
Amateur Hours  
Clubs  
Skating

With the compliments and best wishes of

The Northern Union Conference and its Staff

R. H. NIGHTINGALE, President

L. H. NETTEBURG, Secretary-Treasurer

K. D. JOHNSON, Educational and M. V. Secretary

C. A. EDWARDS, Publishing Department Secretary

O. R. REES, Home Missionary and Sabbath School Secretary

Compliments of a Friend

**WALDORF PAPER  
PRODUCTS CO.**

Saint Paul 14,

Minnesota

Compliments of

**HEIL & DOUGLASS DRUG  
STORE**

"Your Friend for Health"

Arnold Heil, owner

Phone 1935

Hutchinson

CONGRATULATIONS

and may the

Best in Life come to you

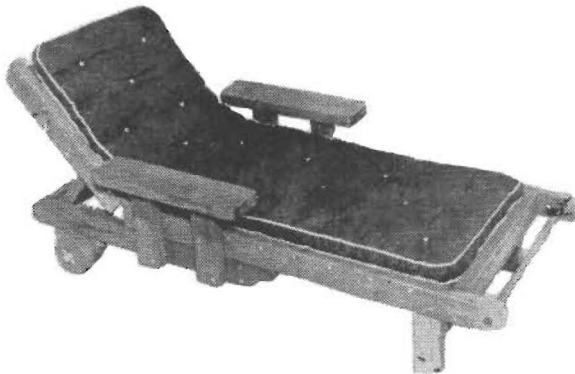


Where you can purchase some of  
the finer material things  
of life

Hutchinson

Minnesota

WISHING  
YOU



CONTINUED

SUCCESS



# Minnesota Wisconsin

## Truck Lines, Inc.

Compliments of

== **EXCELLO** ==  
**ICE CREAM**

**Excel Ice Cream Company,  
Inc.**

Hutchinson, Minnesota

Congratulations

Class of 1956

**NASH-FINCH COMPANY**

Suppliers

"Our Family Fine Foods"

Congratulations

Class of 56

**HARTWIG'S**

Men's Clothing — Bridal Wear  
Millinery

The place to go for Brand Names  
you know

Hutchinson

Minnesota

CONGRATULATIONS  
to the  
SENIOR CLASS OF 1956

BOSTON TEXTILE

FINISHING CORPORATION

SUPPLIERS OF DYED CANVAS  
for  
VANDY-CRAFT Furniture



Compliments of

**HAMMOND LUMBER CO.**  
**Incorporated**

**CALIFORNIA REDWOOD**

**35 East Wacker Drive**

**Chicago 1, Illinois**

COMPLIMENTS OF

*The John Leslie  
Paper Company*

500 South Third Street

Minneapolis

To the Class of '56

*Congratulations*

**Minnesota Conference of Seventh-day Adventists**

**and**

**Minnesota Book & Bible House**

1854 Roblyn Avenue

St. Paul, Minnesota

Congratulations to the

Seniors of 1956

La SALLE CLEANERS

---

CONGRATULATIONS TO THE  
SENIORS OF 1956

BRINKMAN

STUDIO and CAMERA SHOP  
Fine Portraits

Phone 74205

Hutchinson

Congratulations and Best Wishes  
to the  
Class of 1956

# CITIZENS BANK

Hutchinson

Minnesota

Member Federal Deposit Insurance Corporation

## CARGO CARRIERS, INCORPORATED

300 Grain Exchange  
Minneapolis

Coal

Trucked From Barge to Bin

1880

Compliments of

1956

## The Hutchinson Leader

Hutchinson

Minnesota

Compliments of

## SUN-LITE DAIRY

Wholesale and Retail Quality

Dairy Products

Phone 2302

Hutchinson



## STAR SURPLUS STORE

Better Values for Less Money

IN

Clothing — Footwear — Sports Goods

Hutchinson

Minnesota

Congratulations

## ZILA HARDWARE

Hutchinson

Minnesota

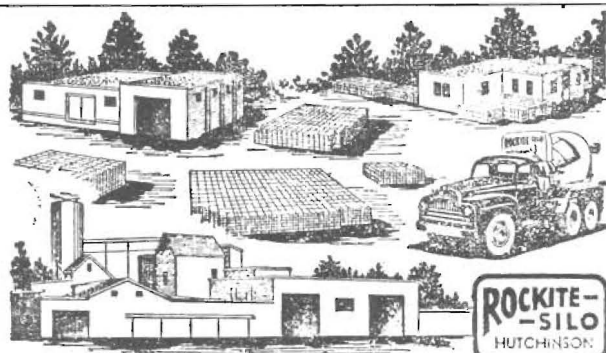
Best in Style and Quality

## ALRICK'S

MEN'S CLOTHIERS

Hutchinson

Minnesota



THE MODERN CONCRETE MANUFACTURING PLANT  
SILOS—READYMIX—BLOCKS—TILE—CORN CRIBS

## ROCKITE SILO, INC., HUTCHINSON, MINN.

Phone 2711

Compliments of

## **HUTCHINSON DRUG**

Hutchinson

Minnesota

CONGRATULATIONS

## **H. KOHNSTAMM & CO., Inc.**

Suppliers of Laundry and  
Dry Cleaning Supplies

Compliments of

## **NELS SIMONSON**

Wholesale and Retail  
LUMBER and BUILDING MATERIAL  
Phone 6175 Hutchinson

Compliments of

## **JANOUSEK'S FOOD**

Hutchinson

Minnesota

CONGRATULATIONS TO THE  
SENIORS OF 1956

## **BETKER CONSTRUCTION CO.**

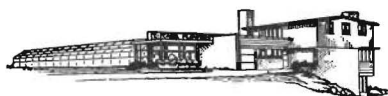
GENERAL CONTRACTING  
Hutchinson Minnesota

Congratulations

## **HOELS' DIRECT SERVICE STATION**

Firestone  
Hutchinson Minnesota

Compliments of



## **CARR FLOWERS**

"Flowers for every occasion"

Phone 3542

Hutchinson

Compliments of

## **HUTCHINSON SHEET METAL**

Plumbing & Heating  
Hutchinson Minnesota



# Student Roster

- Adams, Gene—Rt. 3, Ellsworth, Wisconsin  
 Adams, Valda—Rt. 3, Ellsworth, Wisconsin  
 Amundsen, Connie—M. W. A., Hutchinson, Minnesota  
 Amundson, Grace—Rt. 2, Hutchinson, Minnesota  
 Amundson, LeRoy—Rt. 2, Hutchinson, Minnesota  
 Anderson, Allen—326 Erie St., Hutchinson, Minnesota  
 Anderson, Clarene—Rt. 2, Grand Rapids, Minn.  
 Anderson, Esther—326 Erie St., Hutchinson, Minnesota  
 Anderson, Eugene—Rt. 1, Wadena, Minnesota  
 Anderson, Janice—Rt. 3, Princeton, Minnesota  
 Anderson, Mary Jo—120 Ellis Ave., Mankato, Minnesota  
 Anderson, Robert—Box 97, Maple Plain, Minnesota  
 Anderson, Ruby—Rt. 2, Sanborn, Minnesota  
 Anderson, Sheldon—3505 Holmes Ave., Minneapolis, Minnesota  
 Anderson, William—R. F. D., Buffalo, Minnesota  
 Auge, Donna—Rt. 1, Anoka, Minnesota  
 Ballew, Dixie—214 2nd St. N. W., Hampton, Iowa  
 Bartlett, Eugene—M. W. A., Hutchinson, Minnesota  
 Berglin, Donald—4033 Snelling, Minneapolis, Minnesota  
 Biegler, Merwin—420 Bowling Ave., Detroit Lakes, Minnesota  
 Biegler, Warren—420 Bowling Ave., Detroit Lakes, Minnesota  
 Bitzer, Barbara—564 Clark St., Hutchinson, Minnesota  
 Borg, Clifford—Rt. 1, Nashwauk, Minnesota  
 Branson, Jerry—127 W. 36th St., Minneapolis, Minn.  
 Burghart, Daryl—Fairfax, Minnesota  
 Burr, Jim—Eagle Bend, Minnesota  
 Butherus, Duane—M. W. A., Hutchinson, Minnesota  
 Byer, Ruth—Rt. 2, Welch, Minnesota  
 Chaffee, Tom—Box 43, Hinckley, Minnesota  
 Campbell, Joan—156 McBoal, St. Paul, Minnesota  
 Carlson, Emilie—Maple Plain, Minnesota  
 Carlson, Richard—Maple Plain, Minnesota  
 Carter, Nancy—807 Mt. Faith Ave., Fergus Falls, Minn.  
 Chapman, Donna—Rt. 1, Sheridan, Illinois  
 Chapman, Marilyn—Rt. 1, Sheridan, Illinois  
 Christensen, Leo—Rt. 3, Hutchinson, Minnesota  
 Chuquimia, Modesta—919 Rosewood, Brainerd, Minn.  
 Craven, Martha—Rt. 1, Faribault, Minnesota  
 Craven, Vernon—Rt. 1, Faribault, Minnesota  
 Dahl, Robert—273 Norpac Road, Anoka, Minnesota  
 Dahlberg, Eileen—1332 E. 6th St., Duluth, Minnesota  
 Dailey, Vivian—Rt. 1, Red Lake Falls, Minnesota  
 Day, Lola—1416 W. 34th St., Minneapolis, Minnesota  
 Denny, Freida—Staples, Minnesota  
 Dickie, Carol—Rt. 2, Dodge Center, Minnesota  
 Dittberner, Lois—305 Ottawa Street, Mankato, Minn.  
 Dockham, LeRoy—Eagle Bend, Minnesota  
 Ellis, Arlo—New Richland, Minnesota  
 Ellstrom, Marlene—Hutchinson, Minnesota  
 Engberg, Gary—Detroit Lakes, Minnesota  
 Erickson, David—735 N. Elm, Hutchinson, Minnesota  
 Fankhanel, Elaine—Box 56, Glencoe, Minnesota  
 Fankhanel, James—Box 56, Glencoe, Minnesota  
 Farnes, Ruth—Maple Plain, Minnesota  
 Fischer, George—3949 Idaho Ave. N., Minneapolis, Minn.  
 Fowler, Kerwin—195 Long St., Mankato, Minnesota  
 Fowler, Sharon—195 Long St., Mankato, Minnesota  
 Garner, Hazel—Hinckley, Minnesota  
 Gilbert, Orlo—M. W. A., Hutchinson, Minnesota  
 Godfrey, Helen—M. W. A., Hutchinson, Minnesota  
 Hammerback, Harvey—3401 Colfax Ave. S., Minneapolis, Minnesota  
 Hansen, Lloyd—Greenbush, Minnesota  
 Hermanson, Annabelle—Canton, Minnesota  
 Horst, Carole—23 Riverside Dr. S. E., St. Cloud, Minn.  
 Huset, Calvin—Middle River, Minnesota  
 Huset, Jerome—Middle River, Minnesota  
 Hymel, Gary—809 N. Stephens, El Paso, Texas  
 Ingold, Linda—Long Lake, Minnesota  
 Jarnes, Don—Rt. 2, Wayzata, Minnesota  
 Jensen, Richard—4409 S. 49th St., Lincoln, Nebraska  
 Johnson, Bernelda—Rt. 2, Stewart, Minnesota  
 Johnson, Evelyn—Rt. 2, Stewart, Minnesota  
 Johnson, Marvella—Eden Valley, Minnesota  
 Johnson, Merlin—M. W. A., Hutchinson, Minnesota  
 Johnson, Patricia—209 College Ave., Hutchinson, Minn.  
 Johnson, Sharon—Rt. 6, Brainerd, Minnesota  
 Jones, Larry—Rt. 3, Rochester, Minnesota  
 Jones, Stanley—Stewartville, Minnesota  
 Judd, Barbara—Rt. 1, Staples, Minnesota  
 Julius, Sandra—Rt. 3, Wadena, Minnesota  
 Kanfield, William—324 N. 20th Ave. W., Duluth, Minn.  
 Karr, Jerry—1129 1st St. S. E., Mason City, Iowa  
 Kelstrom, Merland—Stewart, Minnesota  
 Kerkhoff, Bernice—Lamberton, Minnesota  
 Krzykowski, Bernd—3048 Florida Ave., Minneapolis, Minnesota  
 Krzykowski, Guenter—3048 Florida Ave., Minneapolis, Minnesota  
 Lamb, Josephine—940 8th Ave. S. E., Rochester, Minn.  
 Lamson, David—717 Lowry N. E., Minneapolis, Minn.  
 Lehman, Evelyn—Clarissa, Minnesota  
 Lehman, Joyce—Clarissa, Minnesota  
 Link, Robert—511 E. 2nd St., Duluth, Minnesota  
 Mandt, Pamela—1206 Ashland, St. Paul Minnesota  
 McNeilus, Garwin—Dodge Center, Minnesota  
 Merickel, Mary Lou—326 College Ave., Hutchinson, Minnesota  
 Mihm, Anna Mae—Mabel, Minnesota  
 Moe, Myrna—Morgan, Minnesota  
 Mogren, Sonja—4810 Lakeland Ave. N., Minneapolis, Minnesota  
 Nelson, Dorothy—Kellogg, Minnesota  
 Nelson, Floyd—Box 66, Thief River Falls, Minnesota  
 Nelson, Norman—Rt. 1, Detroit Lakes, Minnesota  
 Odegard, Sharon—6531 Medicine Lake Road, Minneapolis, Minnesota  
 Olson, Armond—Correll, Minnesota  
 Olson, Sharon—South Haven, Minnesota  
 Onstad, Karene—Pine City, Minnesota  
 Opstad, Karen—1807 Collins Ave., Austin, Minnesota  
 Osvald, Marvin—634 Laurel St., Cloquet, Minnesota  
 Petersen, Yvonne—Foley, Minnesota  
 Peterson, Jeanie—1019 James Ave., Albert Lea, Minn.  
 Peterson, Ramona—Pillager, Minnesota  
 Petty, Charles—235 Fuller, St. Paul, Minnesota  
 Petty, Thurman—235 Fuller, St. Paul, Minnesota  
 Pierce, Beverly—Rt. 1, Willmar, Minnesota  
 Pryts, Dianne—Middle River, Minnesota  
 Quast, Lou—Box 287, Beach, North Dakota  
 Reyant, Beverly—715 N. Main, Hutchinson, Minnesota  
 Roberts, Clara—427 Walnut St., St. Paul, Minnesota  
 Roberts, Edgar—427 Walnut St., St. Paul, Minnesota  
 Roberts, Raymond—427 Walnut St., St. Paul, Minnesota  
 Rossen, Adele—3537 3rd Ave., Minneapolis, Minnesota  
 Russell, LoNita—Rt. 3, Wadena, Minnesota  
 Rushold, Sally—2608 Bryant Ave. S., Minneapolis, Minn.  
 Sherwood, Carolyn—M. W. A., Hutchinson, Minnesota  
 Sipes, Janet—7419 Nicollet Ave. S., Minneapolis, Minn.  
 Smith, Beverly—Rt. 1, Menahga, Minnesota  
 Smith, JoAnn—Rt. 2, Wadena, Minnesota  
 Spencer, Kathleen—109 N. 15th St., Willmar, Minnesota  
 Starks, Clarence—Canton, Minnesota  
 Steiner, Ted—510 East River Road, Anoka, Minnesota  
 Stinar, Charles—Wadena, Minnesota  
 Syvertson, Darlene—3022 E. 26th St., Minneapolis, Minn.  
 Thayer, Jerry—6233 Aldrich Ave. S., Minneapolis, Minn.  
 Thompson, Ronald—Rt. 2, Eagle Bend, Minnesota  
 Trana, Stanley—523 Iona Lane, St. Paul, Minnesota  
 Van Raden, Rose—Rt. 1, Fertile, Minnesota  
 Walters, Betty Jo—Box 637, New Castle, Colorado  
 Ward, Erwin—Rt. 1, Wadena, Minnesota  
 Westin, Sharon—Box 37, Moose Lake, Minnesota  
 Wolcott, Alvin—Rt. 1, Faribault, Minnesota  
 Wolf, Sharon—237 College Ave., Hutchinson, Minnesota  
 Wykoff, Donna—4300 Stevens Ave. S., Minneapolis, Minnesota  
 Ytredal, Duane—5408 34½ Ave. N., Minneapolis, Minn.







