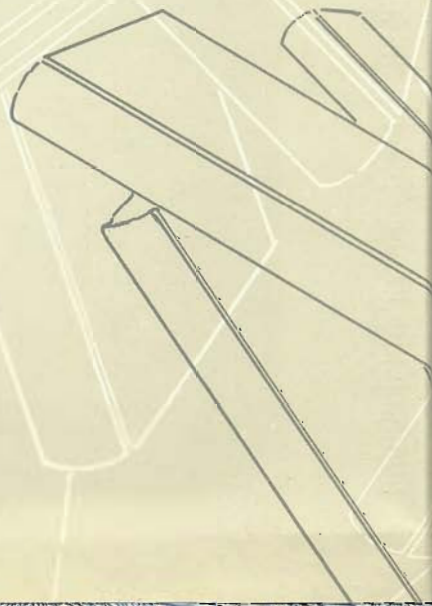
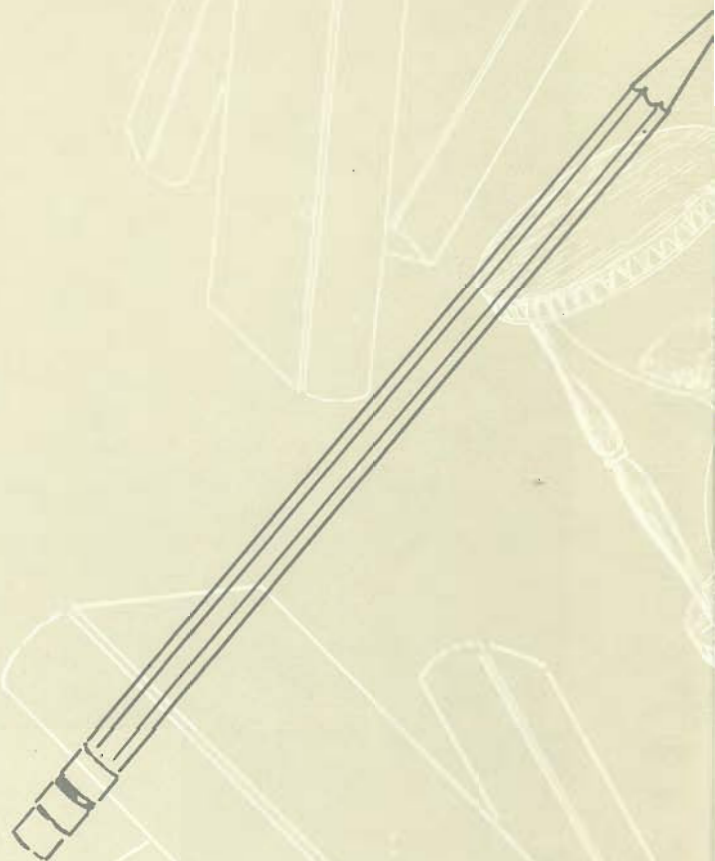
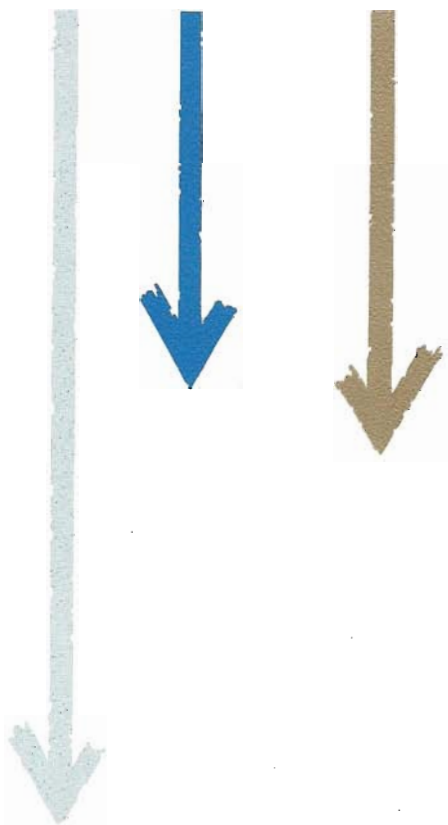


MAPLE LOG



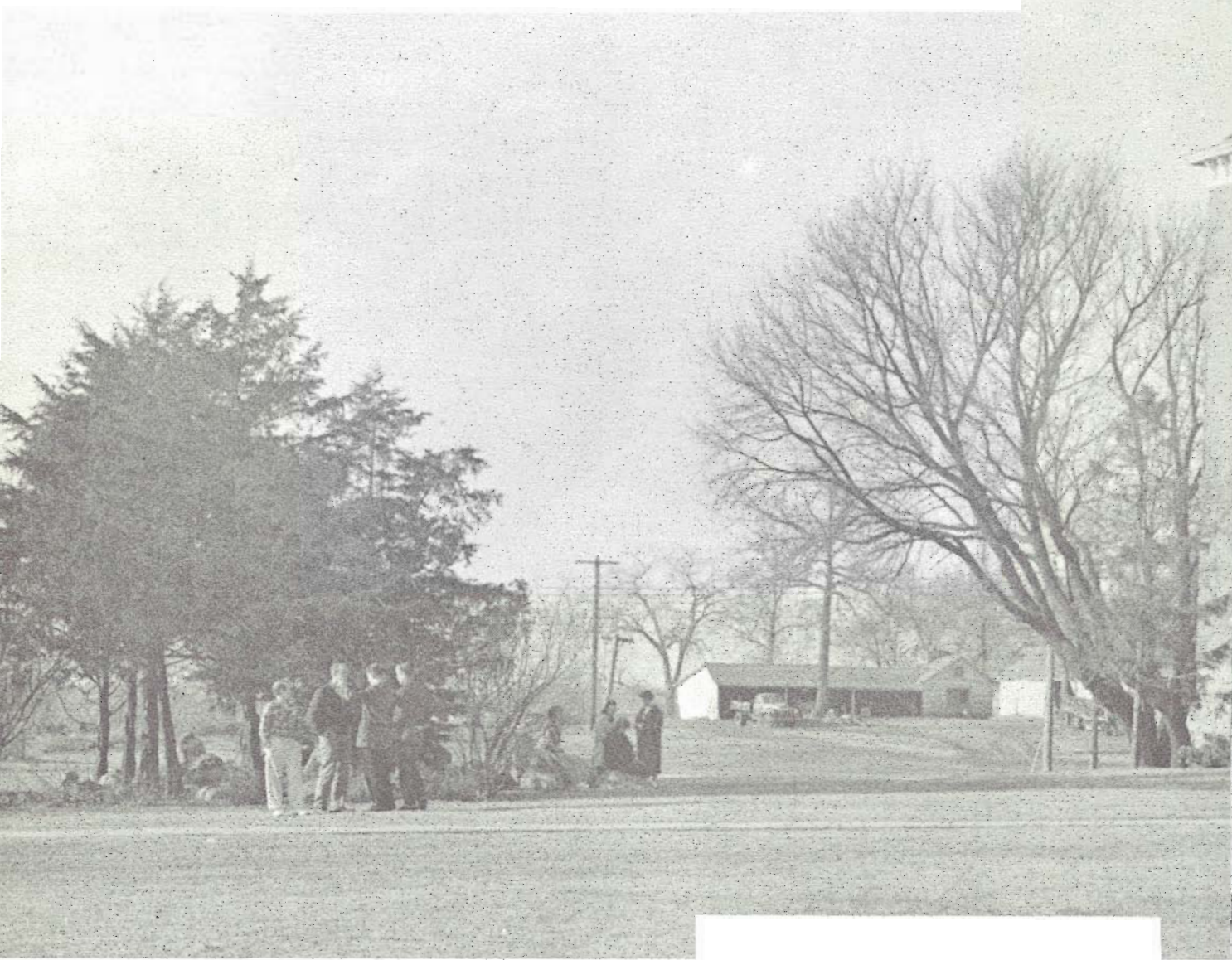


M
A
P
L
E
L
O
G
1960



Published by the
STUDENT ASSOCIATION
MAPLEWOOD ACADEMY
HUTCHINSON, MINNESOTA

Our Academy Campus



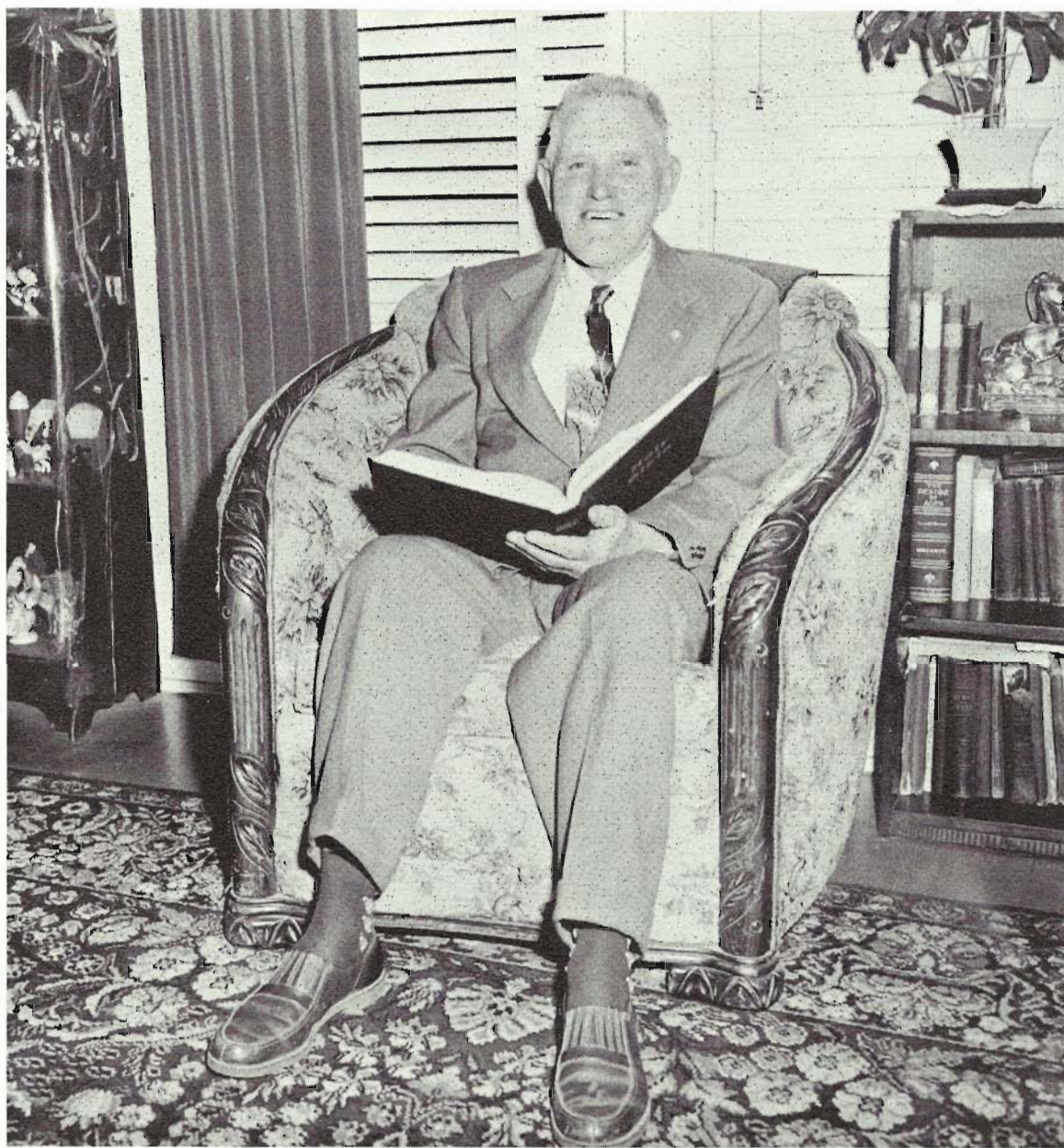
In preparing the 1960 MAPLE LOG, it has been our purpose to present in word and picture the various aspects of school life here at Maplewood Academy, and to create for you a book of memories, which will through the years to come, serve to remind you of your memorable academy years.

It has also been our desire to interweave into these pages a spiritual message which will inspire all those who read it.

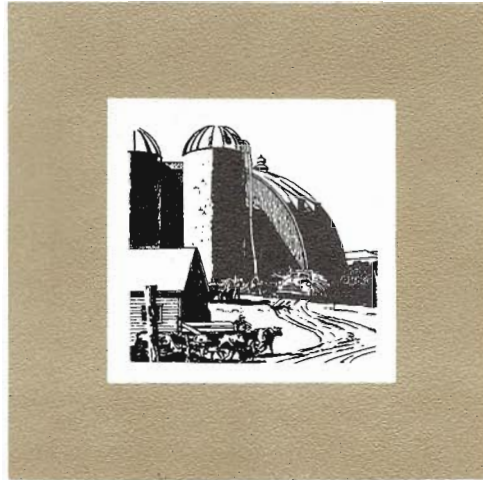
Contents

| | |
|---------------------------|-----|
| Title Page | 1 |
| Dedication | 4 |
| Our Principal | 6 |
| Typical School Activities | 9 |
| Faculty | 15 |
| Seniors | 27 |
| Juniors | 43 |
| Sophomores | 49 |
| Freshmen | 53 |
| Elementary | 55 |
| Religious Emphasis | 57 |
| Secular Organizations | 63 |
| Features | 75 |
| Vocational Training | 81 |
| Snaps | 84 |
| Ads | 88 |
| Roster | 112 |





Dedication



Though your duties have seldom permitted you to be in the forefront of campus activities, still your long hours of labor have not passed unnoticed. Your never-failing sense of humor has helped to enliven our school activities. Your timely counsel in times of stress has served to guide us.

For your cheerful Christian spirit, your genuine interest in us as youth; and your example in Christian living, we the students of 1960 dedicate this MAPLE LOG to you . . .

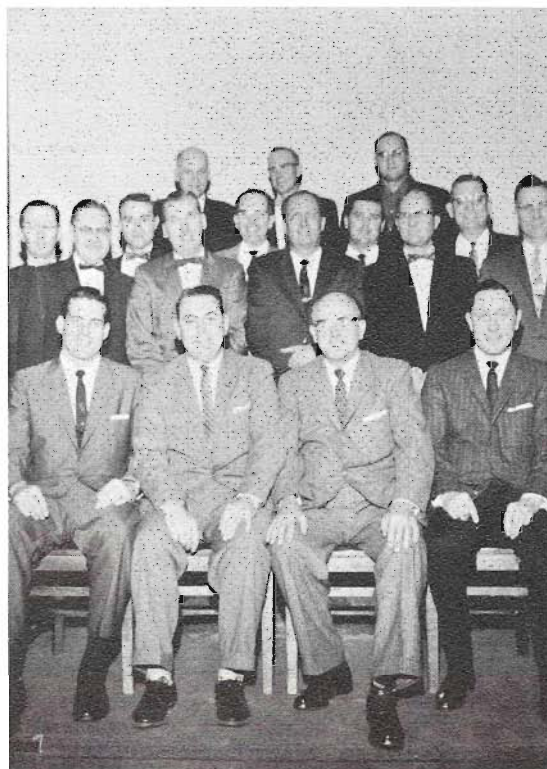
Jesse E. Adams



Our Principal

L. E. McClain for the past three years has ably filled the office of principal and leader of our school. His wisdom and understanding have endeared him to all those who know him. His kindness and sincerity are reflected in all he does. Although the stress and strain of official duties are many times trying, his cheerful disposition is continually in evidence. In word and deed he has pointed us to the Way, the Truth, and the Life.





Academy Board

C. H. Lauda, Chairman
L. E. McClain, Secretary

T. Irville Rush
N. M. Harlan
C. Wayne Griffith
R. H. Nightingale
L. H. Netteburg

B. E. Olson
Clarence Blake
Clifford Christensen
James W. Wolter
Harry Petersen

Jack Guy, M.D.
A. C. Jacobson
G. R. Elstrom
A. C. Woods
J. N. Noble



We Believe

in training hearts for the service of God and man; for we realize that the students of today, will be the leaders of tomorrow.

As you look through this book you will see how our school endeavors to prepare young people for this work; therefore, we present our

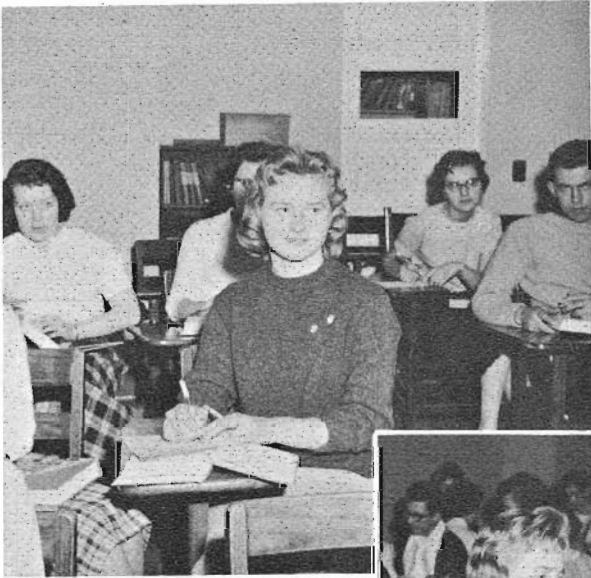
Faculty, Students and Their Activities

AROUND THE CAMPUS WITH LILY VAN RADEN

It doesn't happen every day
Nor ever in the 'xact same way,
But it wouldn't take you long to see
That Lily's busy as a bee.



Morning worship is always first.



In classes Lily takes an active part.

Friendly conversation
always helps make any
meal more pleasant.



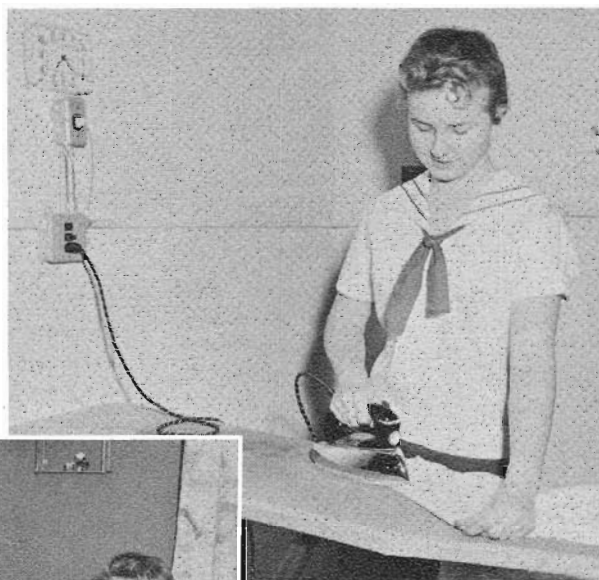
Her afternoons are spent working hard in
the Craftshop.





"Thank you for Thy guidance this day."

She takes time to stay
neat.



Special evenings are
always more fun when
the highlights are
shared with her
roommate, Joy.



"Lily wants a letter."

AROUND THE CAMPUS WITH GENE CHOLLETT

Now we'll look upon the boy
To see what makes for him most joy.

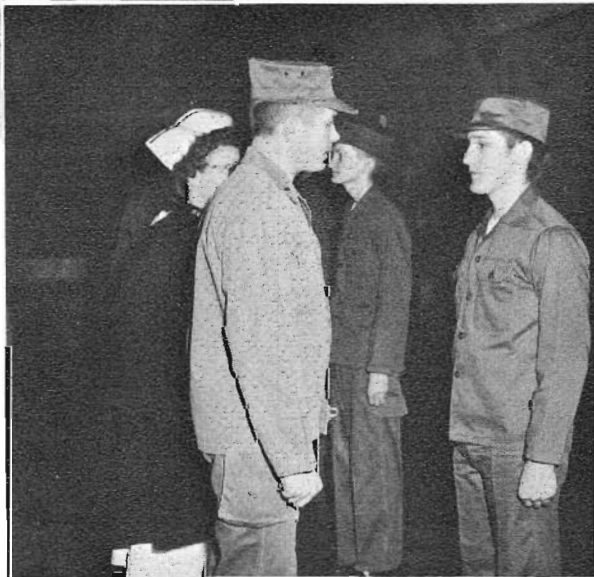


A moment of meditation is a
good start for each day.

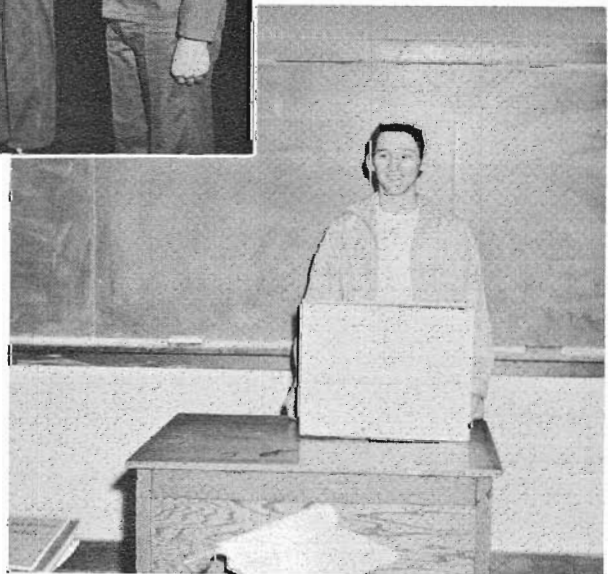


Fellows are always hungry, but a good
breakfast helps start the day right.

M.C.C. training
prepares the fellows
for future Army service.



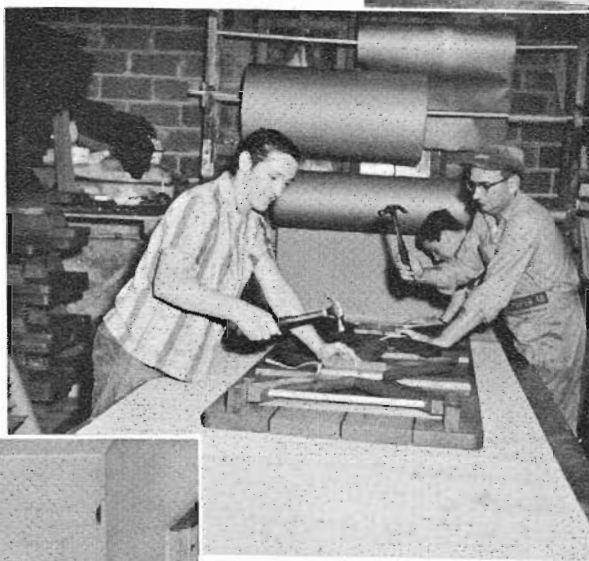
Gene enjoys his speech class.



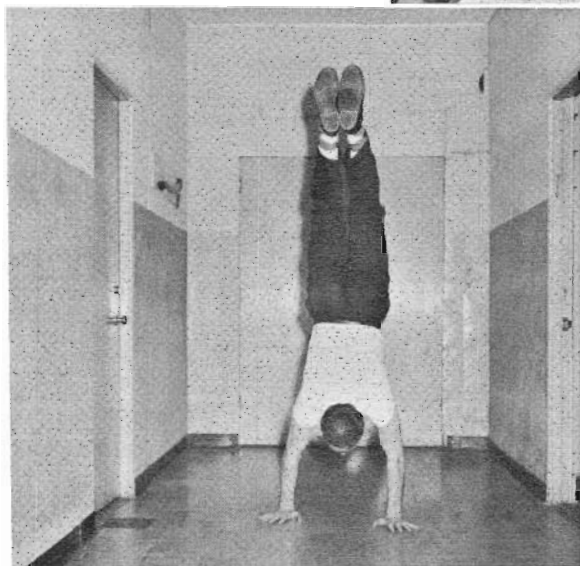


The most important lesson.

Studies can't be
forgotten!



Packing, packing, and
more packing.



Room must be made for a little fun.



Because of our endeavor to keep holy the Sabbath day we present some typical Sabbath activities.

Prayer bands tend to tie the hearts of the Seniors closer together.

Worshipping God in church helps us to better keep the Sabbath holy.



One phase of our "Share Your Faith" program is the Singing Bands.



The afternoon M.V. meetings are enjoyed by all.





We Believe

that Christian schools are essential to our way of life, however, they do not occur automatically. The establishment of a sound educational system depends upon the choice of leaders; therefore, we present our

Faculty



As Principal at Maplewood the last three years Elder McClain has distinguished himself as a leader scholastically and spiritually.

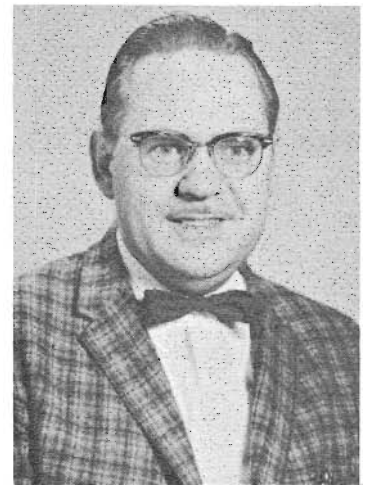
L. E. McCLAIN, M.A.
Principal, Business Manager
American History,
Youth Problems



MRS. L. E. McCLAIN
Registrar
Secretary to the
Principal

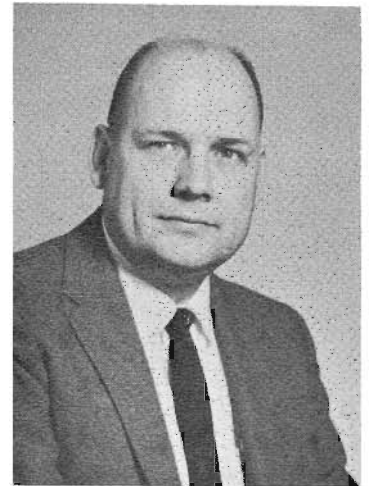


A glance at Mrs. McClain's daily work would quickly show you that she is the Secretary to the Principal and also does a very good job as the Registrar.



J. N. NOBLE, B.A.
Asst. Bus. Mgr.
and Treasurer

During the past two years, it has been a typical sight to see Elder Noble surrounded by his account books, spending long hours as Assistant Business Manager and Treasurer. Some of his spare time is spent in assisting the advertising manager of the MAPLE LOG, and in being one of its sponsors.



C. E. FELTON, B.A.
Bible Doctrines

Elder Felton has been officiating as Pastor of the Hutchinson S.D.A. church for the last two years. He is sponsor of the Crusaders seminar group and also teaches Bible Doctrines class. As of late he has been kept very busy working on the new church building.





MRS. DOROTHY RUSSELL, R.N., B.S.

Dean of Girls
School Nurse

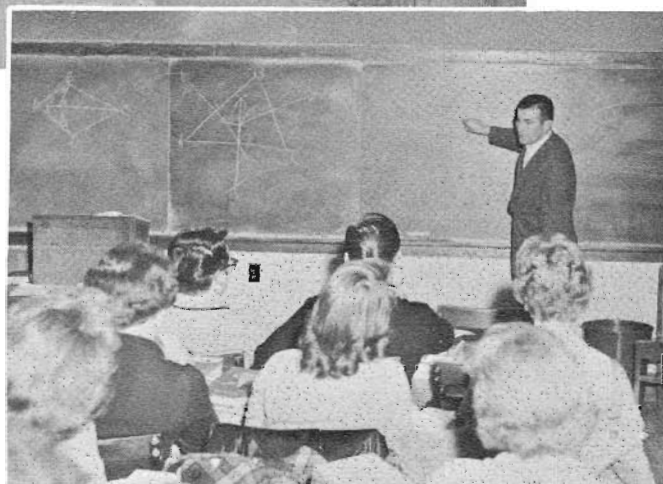
Our Dean of Girls has been at Maplewood for two years. Besides making a home for the girls she is also the School Nurse. One of her duties as nurse is reaching first aid for the M.C.C. class.



THOMAS S. HINDE, B.A.

Dean of Boys
Algebra, Geometry, M.C.C.

Mr. Hinde, Dean of Boys, has been here for the past two years. He teaches the Geometry and Algebra classes. Lieutenant Hinde also conducts M.C.C. here at Maplewood.





JOHN J. HOOPER, B.A.
Bible, Bookkeeping, History,
Business Math.

Teaching Old and New Testament History, Bookkeeping, World History, and Business Mathematics keeps Mr. Hooper busy in scholastic activities. His extra-curricular activities include being a prominent leader of Crusader Seminar group, and an advisor of *The Northerner*. He's also the leader of the Temperance Society.



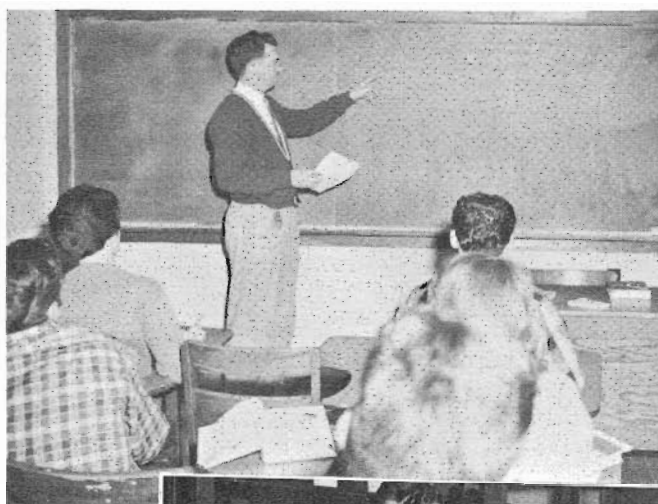
MRS. IRMGARD A. HOOPER, B.A.
German, English

Mrs. Hooper has taught the German I and II classes and also the first and second years of English for the past three years. She also helps supervise our school paper, *The Northerner*.



G. GILBERT McMILLEN, B.A.
Chemistry, Biology, English

A new addition to our faculty this year is Mr. McMillen. He teaches English III and IV, Biology, and Chemistry. The Seniors keep him busy as one of their class sponsors.



BETTY M. TOPE, B.S.
Assistant Dean
Home Ec., Librarian,

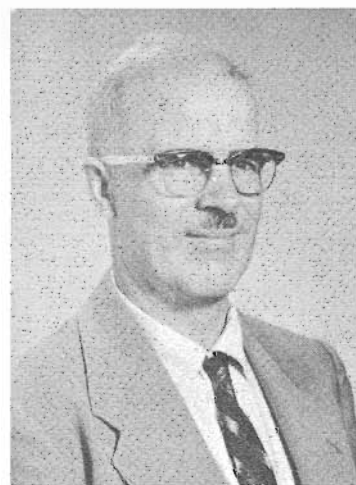
Our efficient Librarian, Miss Tope, has been here for the past four years. Besides this duty she teaches Home Ec. She's our dining room hostess and is Assistant Dean.





ALICE F. PIERSON, B.S.
Typing and Shorthand

Mrs. Pierson has been a very good sponsor of the MAPLE LOG for the past two years. She teaches the Typing I and II classes and also Shorthand. The Seniors chose her as one of their class sponsors this year.



DONALD J. SHERWOOD, B.S.
Craftshop Manager
Woodworking

Mr. Sherwood has been Craftshop Manager for the past eight years. He is also the teacher of the Woodworking class.





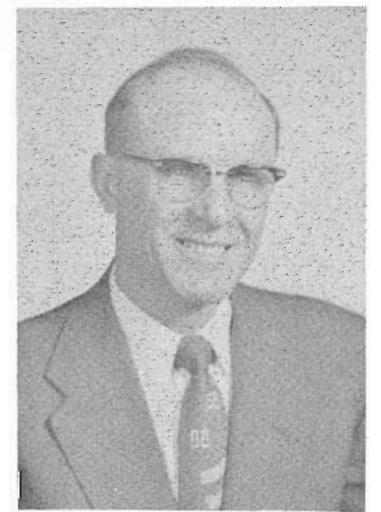
C. DWIGHT RHODES, B.A.
Head of the Music Department
Our music director, Mr. Rhodes, has been with us for three years. His round of duties includes being director of band, and choir. Also he teaches voice, instruments and piano.





MRS. JULIA GODFREY
Director of Foods

For three years we have had Mrs. Godfrey as the Director of Foods. We all agree that she rates high in this capacity.



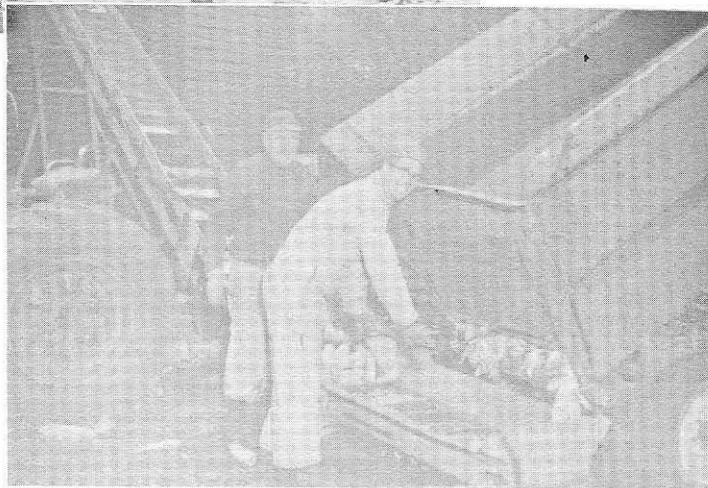
P. W. SCHWAB
Maintenance Director

If you are looking for a Mr. Fixit, Mr. Schwab is your man. He has been here at Maplewood for three years and we hope that he will be here many more. His varied skills make him a very efficient maintenance man.



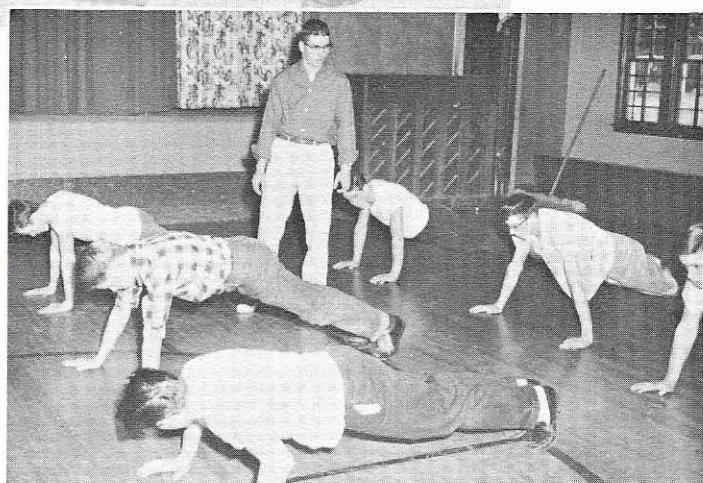
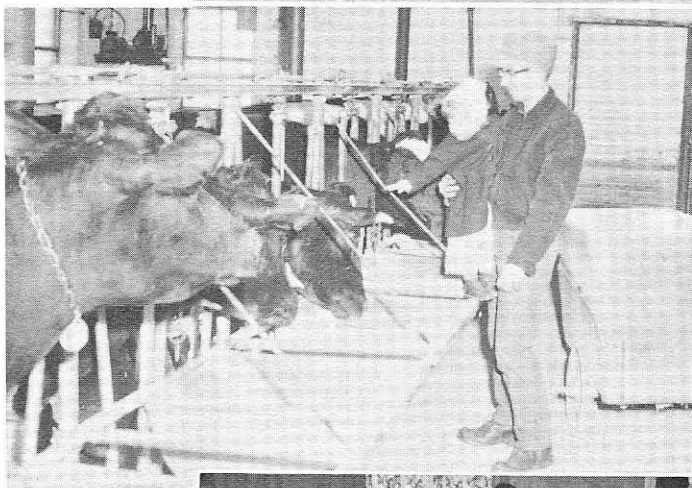
JESSE E. ADAMS
Farm Manager

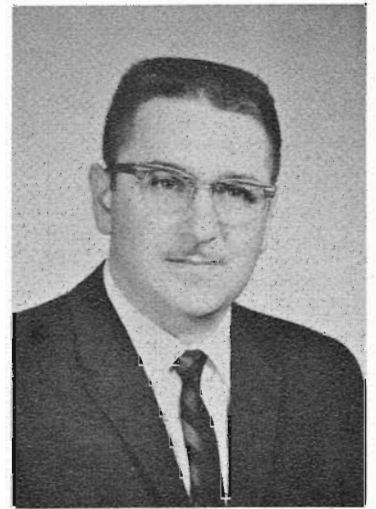
For the past years, Mr. Adams has managed our farm very efficiently. His activities have not been confined solely to the farm. He has contributed much to the progress of our school.



JAMES E. CURRY, B.S.
Asst. Farm Manager, Phy. Ed.

Mr. Curry came this year to assist Mr. Adams. Besides his duties on the farm, he teaches Physical Education.



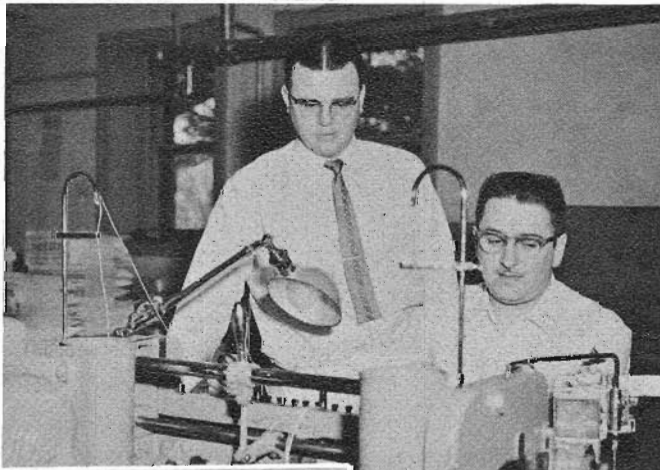


MICHAEL BOGDANOVICH
Bookbindery Manager

Mr. Bogdanovich came three years ago to be the Assistant Manager of the Maplewood Bookbindery. For the past two years he has been doing a fine job as the Manager. He is also the MAPLE LOG photographer which keeps him very busy.



Mr. Runan Ellstrom
Bookbindery representative in the states
of Minnesota and North Dakota.



IVAN GROULIK, B.S.

Although Mr. Groulik has only been on our campus the second semester, he has already shown his efficiency as the Assistant Manager of Bookbindery.



Mr. George Pierson
Bookbindery representative in the states
of Iowa and South Dakota.



MRS. HERBERT CHRISTENSEN

Laundry Supervisor

Mrs. Christensen is our Laundry Supervisor, who has been with us for ten years.

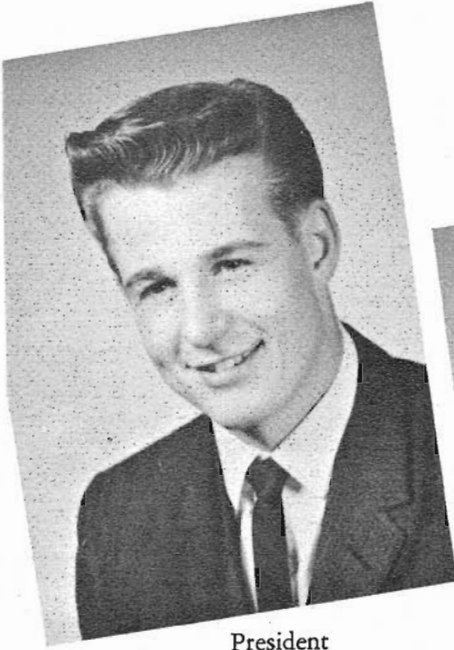




We Believe

that youth of today have a forward
look and a desire to train them-
selves for a life of service, or
they would not be here;
therefore we present our
hope for the future
our . . .

Students



President

ALLEN TRUAX

Physical Therapist

He gave the class of his best,
In simple devotion, his best he gave.

Boys' Club, Sgt.-at-Arms, 2, Sec., 4; A.S. B., Class Rep., 3, Sgt.-at-Arms, 4; Nominating Committee, Chairman, 4; Class, Sgt.-at-Arms, 2,3, Pres., 4; Prayer Band Leader, 4. Honor Ten.



Secretary

Valedictorian

MARTHA ROBERTS

Pediatric Nurse

Big in heart and small in size,
Martie is clever, witty and wise.

Girls' Club, Treas., 2; Crusaders, Sec., 4; Temperance Club, 1-3; S.S. Teacher, 2,3; *Northerner*, Feature Ed., 4; Choir, 1; A. S.B., Class Rep., 1; Treas., 4; Class, Sec., 4; Prayer Band Leader, 2,3.



Pastor

LAWRENCE MISENKO

Physician

Larry is always ready and gay
Just wait and see, he'll pave his way.

Boys' Club Vice-Pres., 4; Crusaders, 4; M.V. Supt., 4; Choir, Sgt.-at-Arms, 4; Band, Pres., 4; Class, Pastor, 4; *Northerner*, Campaign Leader, 4; Boys' Club, Summer Sgt.-at-Arms, 4.



Sponsor

MRS. ALICE PIERSON

Aim

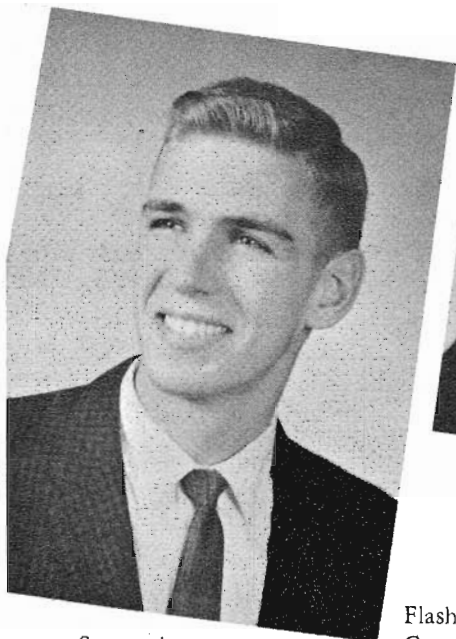
"To Enlighten the World"

CLASS COLORS

Light Blue — White — Charcoal

Class

1960



Sgt.-at-Arms
WAYNE ANDERSON

Minister
"It's just once in a while
you can meet a guy
Who can laugh and talk
as much as I."

Boys' Club, Sec., 1, Pastor, 4; Crusaders,
1, General Vice-Pres., 4; S.S., Supt., 3,4,
Teacher, 3; M.V., Chorister, 3; Choir,
3-4; Band, 3-4, Pastor, 4; Class, Pres., 1,
Sgt.-at-Arms, 4; Prayer Band Leader, 4;
Choir, Vice-Pres; 4. Honor Ten.



Treasurer
LUETTE ROSENTHAL
Home Economics Teacher

Flashy, witty, and quite daring.
Crusaders, 2-4; S.S. Teacher, 2,4; M.V.,
Leader, 3; Class, Treas., 4; Prayer Band
Leader, 1,4; Singing Band Leader, 2,4.



Vice-President
JUDITH BURGHART
Nurse

Dark hair, pretty eyes
Not too quiet, but really quite wise.

Girls' Club, Sgt.-at-Arms, 3; Choir, 1;
A.S.B., Sec., 3; Class Vice-Pres., 1,4, Sec.
2; Prayer Band Leader, 4; S.S. Teacher 4.



Sponsor
MR. GILBERT McMILLEN

Motto

"Not the sunset, but the dawn"

CLASS FLOWER

White Rose



KAREN ADAMS
X-Ray Technician

"A specialist in moods am I,
Striving to reach a goal that's high."

Crusaders, 2; Temperance Club, 3; S.S. Teacher, 2; MAPLE LOG, Asst. Ed., 3; Choir 4; Prayer Band Leader, 2-3; Girls' Glee Club, 2-3.



Salutarian
ROSEMARY ANDERSON
Laboratory Technician

Full of life, full of pep,
Out in front, and right in step.

Crusaders, 3-4, Vice-Pres., 3; Temperance Club, 2-4; Sec.-Treas., 3; S.S., Chorister 3; M.V. Summer Leader, 2; Choir, 2-4; Class, Vice-Pres. 3; Prayer Band Leader, 3; Girls' Trio, 2-4; *Northerner*, Assoc. Ed., 3; Editor-in-Chief 4.



SHIRLEY ANDERSEN
Nurse

Not too serious, not too gay
But a nice girl in every way.

Girls' Club, Treas., 3; Crusaders, 3-4; Temperance Club, 3-4; S.S. Teacher, 3; Prayer Band Leader, 3; Choir, 1-2; M.V., Leader, 4.



ESTHER BEYER
Nurse

Quiet, earnest, that's the way,
First work hard, then maybe play.

Crusaders, 1-4, Vice-Pres., 4; Temperance Club 3; M.V. Leader, 4; Prayer Band Leader, 3; S.S. Teacher, 4.



GAY BLUMENSHEIN
Beautician

A little laugh, a little fun
is all she'll ask
To help make lighter each
day's task.

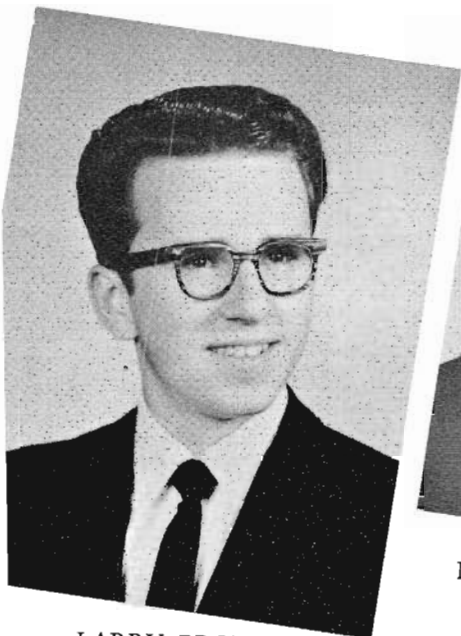
Girls' Glee Club 3.



BONITA BORG
Dietitian

So capable and peppy,
so honest and sincere;
No one ever wonders why
friends hold her so dear.

Girls' Club, Vice Pres., 3, *Northerner*, Asst. Circ. Mgr., 3; Choir, 1; Prayer Band Leader, 3; Girls' Glee Club, 2-3; Crusaders, 1-4; President, 4.



LARRY BROMME

Anaesthetist

A born mimic, wit, and story teller;
Full of fun and mischief, too.

Choir, 3-4.



DWAYNE BURGHART

Undecided

To tease or to be teased,
That is the question.

Choir, 2.



GENE CHOLLETT

Missionary

Thoughtful and serious he knows
his place;
But room for fun there's always
space.

Boys' Club, Vice-Pres., 4; Prayer Band
Leader, 4; Singing Band Leader 4.



PATRICIA CHURCHES

Elementary Teacher

Small, vivacious, with a pleasant smile.



RICHARD DEAN

Mechanic

He's a short and friendly lad;
His future plans will soon be had.

"B" Band, 3-4.

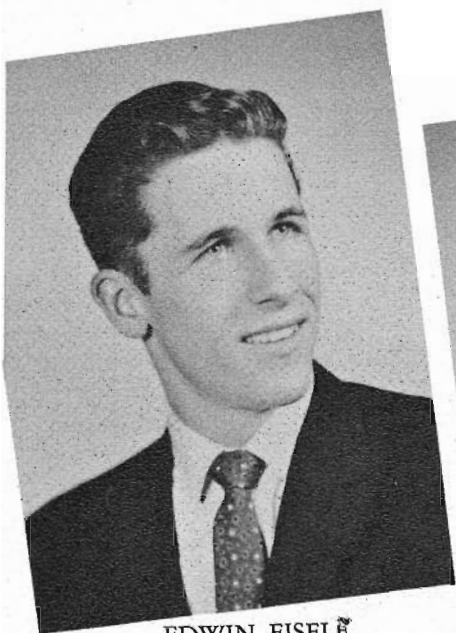


SAUNDRA DE REMER

Musician

Her charm is as natural as her curls.

Girls' Club, Pianist, 2, Pres., 4; S.S.,
Pianist, 3, Teacher, 4; Class Treas., 3;
Prayer Band Leader, 2-4; *Northerner*,
Typist, 2; Reporter, 4; MAPLE LOG,
Typist, 2; Temperance Club 4; Honor
Ten.



EDWIN EISELE
Medical Missionary

A gentleman doesn't make too much noise.

S.S., Sec. 4; Teacher 4; Boys' Club, Pastor, 4.

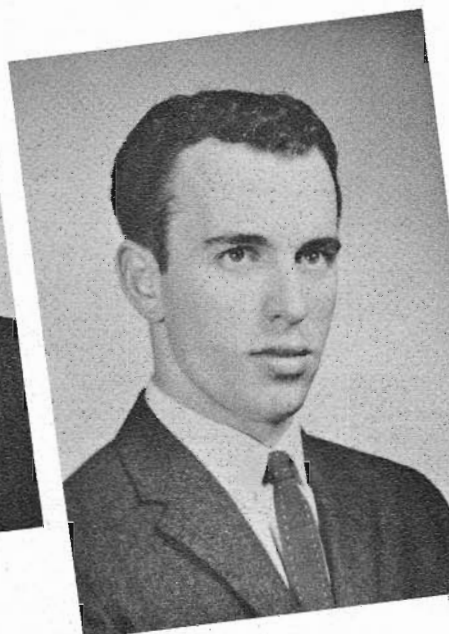


LYLE GODFREY

Mathematics Teacher

Good sense, common sense;
But always room for nonsense.

Crusaders, 4; S.S., Sec., 3, Teacher, 4;
Band, 3-4, Vice Pres., 4; A.S.B., Sgt.-at-Arms, 3; Class, Sgt.-at-Arms, 1.



ROBERT HEDGER
Lawyer

Quiet — till you get to know him.

Boys' Club, Sgt.-at-Arms, 4;
Prayer Band Leader, 4.



GWENDOLYN HUSTED
Music Teacher

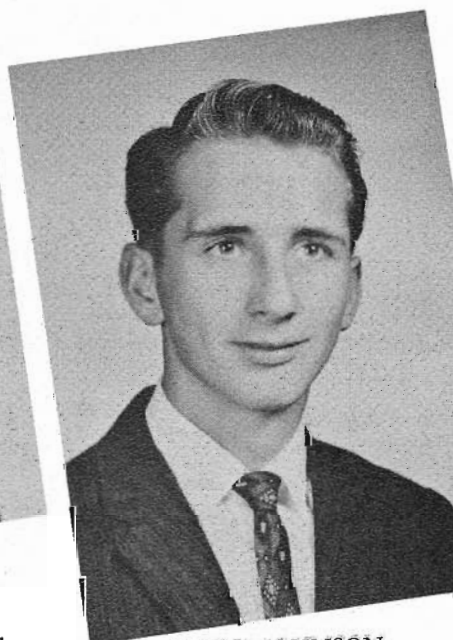
Dark brown hair and a quiet air;
She helps make music everywhere.

S.S., Sec., 3, Organist 2-1; Girls' Trio, 2-4; Choir, 1-4. Honor Ten.



COLLEEN JOHNSON
Secretary

Cheery lass who likes to laugh.
Crusaders, 4; Girls' Glee Club 1.



JERRY JOHNSON
Physician

He is most friendly and has the capacity to be happy.

Crusaders, 3; S.S., Chorister, 4; M.V., Chorister, 3; Choir, 3-4; Band, 3-4 MAPLE LOG, Snapshor Editor, 4. Honor Ten.



DOROTHEA JONES

Nurse

Long blond hair, and a smile that's sweet,

Goes to show that Dot can't be beat.

Crusaders, 2; Temperance, 1-4; S.S., Sec. 4; Choir, 1-4; Singing Band Leader, 3-4.



MARGARET KISOR

Music Teacher

A good student, a friendly girl.
She's active in the social whirl.

Girls' Club, chorister, 3; Crusaders, Vice-Pres., 3-4; Temperance, 2-4; M.V. leader, 2; *Northerner*, Asst. Ed., 3; Choir, 1-4, Chronicler, 4; A.S.B., Class Rep., 2, Vice-Pres., 4; Class, Sec., 1; Small Choir, 3; Girls' Trio, 2-4; Girls' Glee Club, 2-3; Prayer Band Leader, 2. Honor Ten.



CATHY KOCH

Photographer

A charming miss
with eyes of blue,
She's well liked
although she's new



HELEN KUPCHO

Mathematics Teacher

Either she'll find a way or make one.

Girls' Club, Treas., 4; Crusaders, 3-4; Glee Club, 3. Honor Ten.



LELAND KUPCHO

Undecided

He isn't quiet, he isn't loud,
He has a smile of which we are proud.

Boys' Club, Treas., 4.



LINDA LAIR

Social Welfare Work

Was there ever a maiden so fair
and true,

Pretty, capable, and brilliant too.

Crusaders, 3-4; Temperance, 4; S.S., Sec., 3; Choir, 3-4; Small Choir, 3; Class Trio, pianist, 3-4; *Northerner*, typist, 3; Singing Band, 3; MAPLE LOG, Editor-in-Chief, 4; Class, Sec., 3; A.S.B., Nominating Committee, 4; Prayer Band Leader, 3-4; Choir, Sgt-at-Arms, 4. Honor Ten;



DONALD LARSEN
X-Ray Technician

Sober, quiet, friendly, bright;
We wish him all the luck in sight.

Choir, 4.



LEONARD LARSON
Undecided

Blond, wavy hair and a manner
that's quiet,
But show him a car and he's
sure to buy it.



RONALD LAUER
Business Administrator

If sports were music,
He'd be a whole brass band.

Boys' Club, Pres., 4; S.S. Teacher, 4;
Choir, 3-4; Prayer Band Leader, 4.



AUDREY LUNDQUIST
Nurse

Ready to work, ready to play,
Ready to help whenever she may.

Girls' Club, Sec., 3; S.S., Teacher 4.
Honor Ten.



KAREN LUSHANKO
Nurse

A likeable miss with a ready smile.
S.S., Pianist, 3, Teacher, 3, Secretary, 2.



REBECCA MILLER
Nurse

Small, cute, and full of fun,
Becky's well known by everyone.
Girls' Club, Sgt.-at-Arms, 2; Crusaders,
4; S.S. Teacher, 3-4; M.V., Sec. 3.



DONNA RAE NIELSEN
Teacher

Donna Rae's a gal efficient and neat,
And those crimson blushes
just can't be beat.

Girls' Club, Vice-Pres., 4; Asst. Sec. 2;
Crusaders Sec., 4; S.S. Teacher, 4; M.V.
Pianist, 3-4; *Northerner*, Circulation
Manager, 4; Asst. Circulation Manager,
3; Band, 3; Prayer Band Leader 3; Girls'
Glee Club, 3.



VIRGINIA OLSON
Nurse

Happy go lucky fair and free,
Dark hair and eyes as you can see.

S.S. Teacher, 4; *Northerner*, Asst. Edi-
tor 4.



LEE REYNOLDS

Physical Therapist

Earnest mind, a heart of gold,
Always busy, never bold.

Boys' Club, Sec., 4; S.S. Sec., 4; M.V.
Leader, 4; Band, Sec.-Treas., 4; Prayer
Band Leader, 4.



GRETCHEN ROHLF
Nurse

Smiles that portray
Her mischievous way.
Band, 3-4.



LYNNELLE SAMARZA
Secretary

Fond of living and full of fun.
Nellie's life has just begun.

Prayer Band Leader, 2; S.S. Pianist, 3,
S.S. Teacher, 4; Choir, Pastor 4.



LOIS SCHLENKER
Nurse

Curly hair, and a love for art,
These will give her in life a start.

Band, 2; Prayer Band Leader, 1-2; Tem-
perance Club, 3; S.S., Teacher 4.



DAVID SCHWAB
Dentist

A worthy and fine Maplewood
resident,
We made him our
student body president.
S.S., Sec., 3; Boys' Club, Vice-Pres., 3;
Class Pres., 3; Band, 3-4; A.S.B. Presi-
dent, 4; Choir, 2-4, Pastor, 4.



LORRAINE SHAW
Secretary

Think her not a trifle,
Though small she may appear.



WALTER SHULTZ
Dental Surgeon

His step is music,
His voice is song,
With these two talents,
He can't go wrong.

Boys' Club, Pres., 4; Crusaders, 4; Tem-
perance Club, 4; Choir, 4; Band, 4;
Prayer Band Leader, 4; *Northerner*,
Campaign Leader, 4.



EDNA STARKS
Secretary

When this girl's around
There is always laughter.



KATHLEEN TRUMBLE
Nurse

Kathie's a gal
very capable and sweet,
In her nurse's uniform,
she'll look real neat.

Choir, 1; Prayer Band Leader, 3; MA-
PLE LOG, Typist, 4. Honor Ten.



LILY VAN RADEN
Missionary Nurse

Her pleasant smile and gentle way,
Endeared her to us day by day.

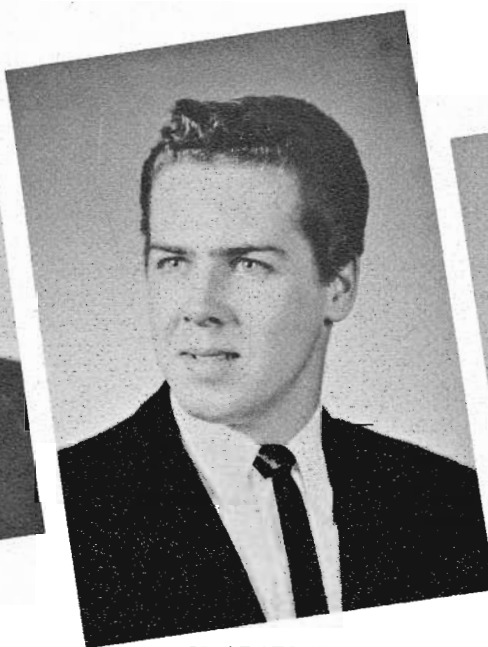
Choir, 3; Crusaders, 4; S.S. Leader 4.



EUGENE WARD
Certified Public Accountant

Honest in word,
good in deed,
Gene's a boy
who'll always succeed.

Crusaders, Vice-Pres. 3; Choir 3-4.



CHARLES WOLD
Undecided

The world is as you find it,
But life is yours to make it.

Boys' Club, Sgt.-at-Arms, 4.



WAYNE WOLD
Undecided

Sometimes work,
sometimes play,
Sometimes serious,
always gay.

Boys' Club, Treas. 4.

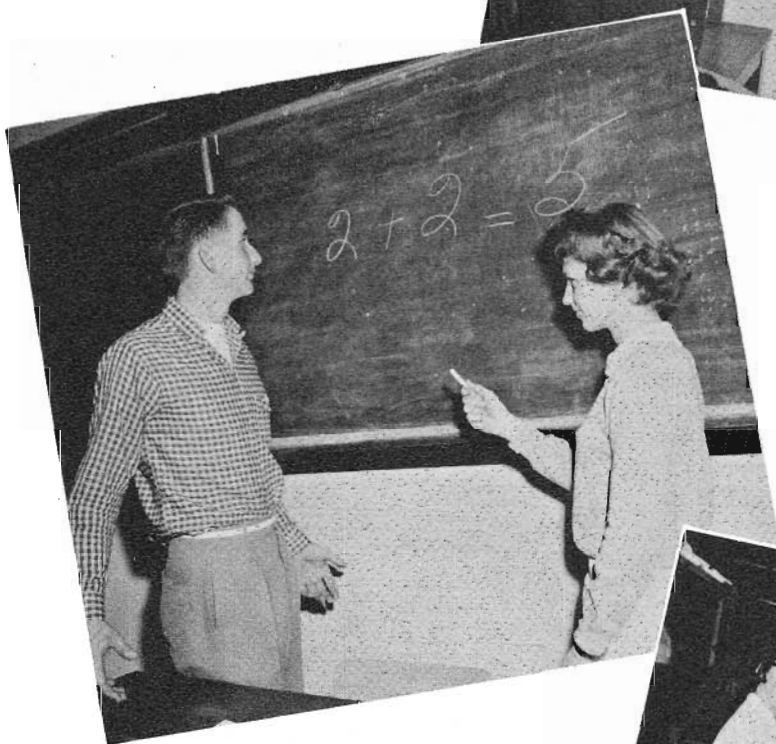
SENIOR RECOGNITION DAY



Senior Who's Who

SPIRITUALLY INCLINED

Bonnie Borg
Gene Chollett



INTELLECTUAL

Martha Roberts
Jerry Johnson

DEPENDABLE

Esther Beyer
Bob Hedger



LIKELY TO SUCCEED

Donna Rae Nielsen
Allen Truax



ALL AROUND

Linda Lair
David Schwab



TALENTED

Margi Kisor
Rosemary Anderson
Walter Shultz

KIND
Kathie Trumble
Wayne Wold



ATHLETIC
Karen Adams
Ronald Lauer



WITTY
Helen Kupcho
Larry Bromme



FRIENDLY
Judy Burghart
Larry Misenko



FUN
Luette Rosenthal
Wayne Anderson



COURTEOUS
Shirley Andersen
Edwin Eisele



DIGNIFIED
Gwendolyn Husted
Leonard Larson



LONG AND SHORT OF IT
Lorraine Shaw
Leland Kupcho



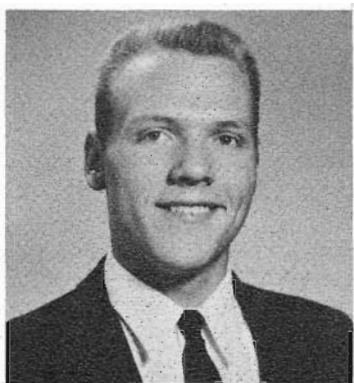
PEPPY
Dorothea Jones
Lyle Godfrey





Junior Class Officers

President Bennett Chilson
Vice-President June Thygeson
Secretary Judith Dahl
Treasurer Dorothy Swanson
Sgt.-At-Arms Thomas Lighthall
Pastor Loren Christensen
Sponsors Mr. Hinde and
Mr. Bogdanovich



Winston Bascom



Mary Jane Branson



Ruth Butters



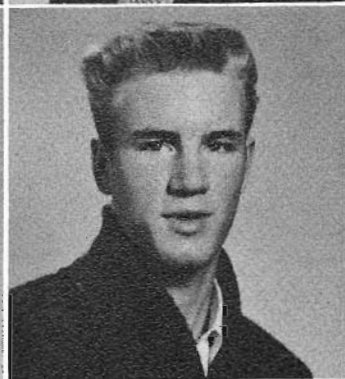
Bennett Chilson



Loren Christensen

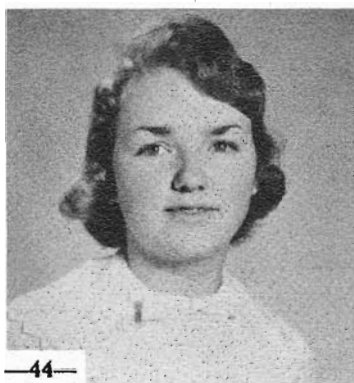


Mary Cravens

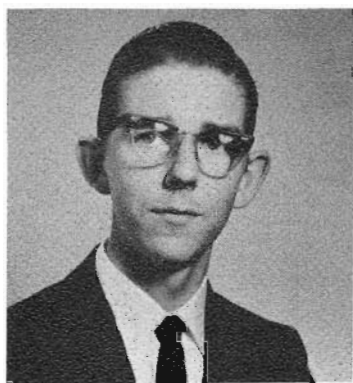


James Crofton

Judith Dahl



Dean Dittberner



Sharon Dybdahl





Diane Ellington



Marie Erickson



Teo Fisher



Scott Foster



Carole Hanson



Cleora Hanson



Joy Hammerback

Judy Hammerback



Joel Hass



Ronald Hild





Joyce Jacobson



Connie Larsen



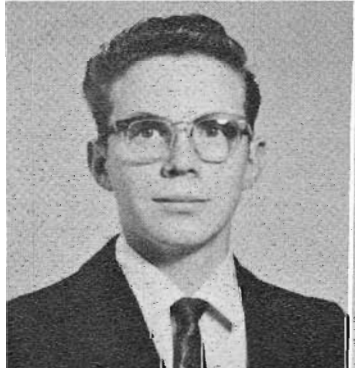
Richard Larson

Thomas Lighthall



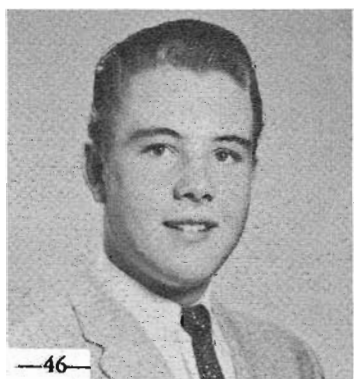
Joanne Lushanko

Ronald Millard



Anna Miller

Dwight Mills



Dennis Newman

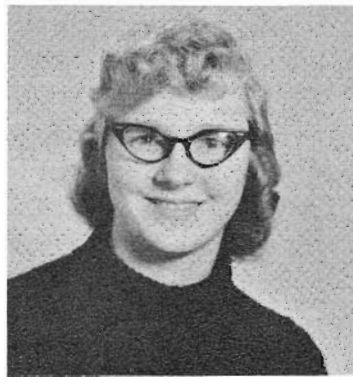


Jean Niven





Barbara Olson



Sharon Peterson



Jacquelyn Pierce



Norma Roedel



Joy Rosaasen



Geraldine Schlenker

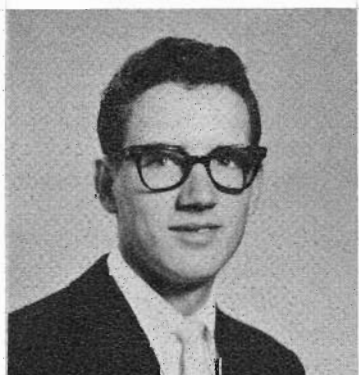


Virginia Shortridge

Daniel Simpson

Jean Spangler

Dorothy Swanson

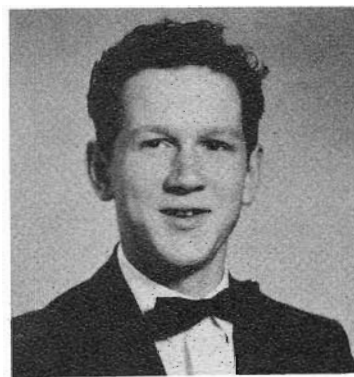




Kristine Swanson



Bernice Swatek



Frederick Swenson

Judith Thayer



June Thygeson

Joel Trumble



Jean Tucker

Jayne Tucker



Bonnie Waterhouse



Lynda Watson





Sophomore Class Officers

President Charles Peck
Vice-President Sandra Rasmussen
Secretary Judy Olson
Treasurer Lynette Prange
Sgt.-At-Arms Dwight Engelrup
Pastor Edward Rosaasen
Sponsors Mrs. Godfrey and
Mr. Schwab

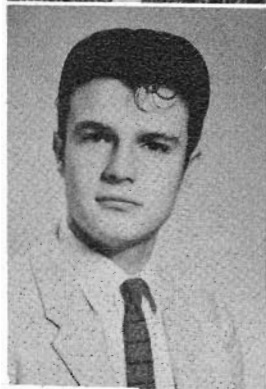
Warren Anderson



Beverly Burghart



Robert Butters



Becky Christensen



Beth Christensen



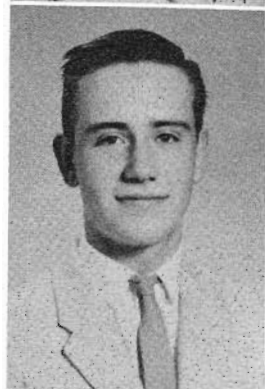
Leslie Dean



Dwight Engelrup

Ronald Christensen

Terry Flyger



Jeanette
Garner



Ruth Ann
Johnson



Karen
Kaldahl



Gerald
Kennedy

Edward Lair



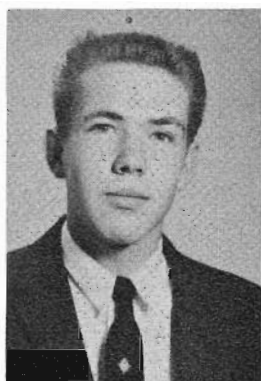
Kay Miller



Linda Misenko

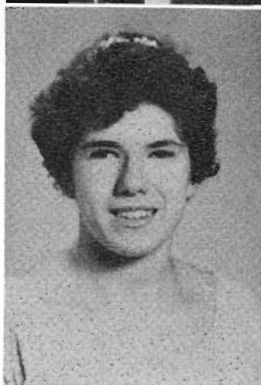


Judy Olson



Charles
Peck

Sandra
Rasmussen



Donna
Shamberg



Lynette
Prange

Edward
Rosaasen



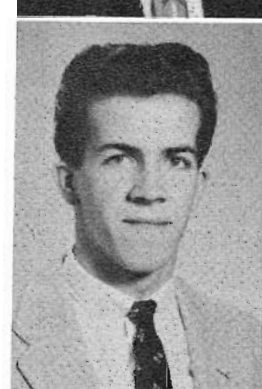
Donna
Sherwood



Janet
Tucker



Donna
Westerman



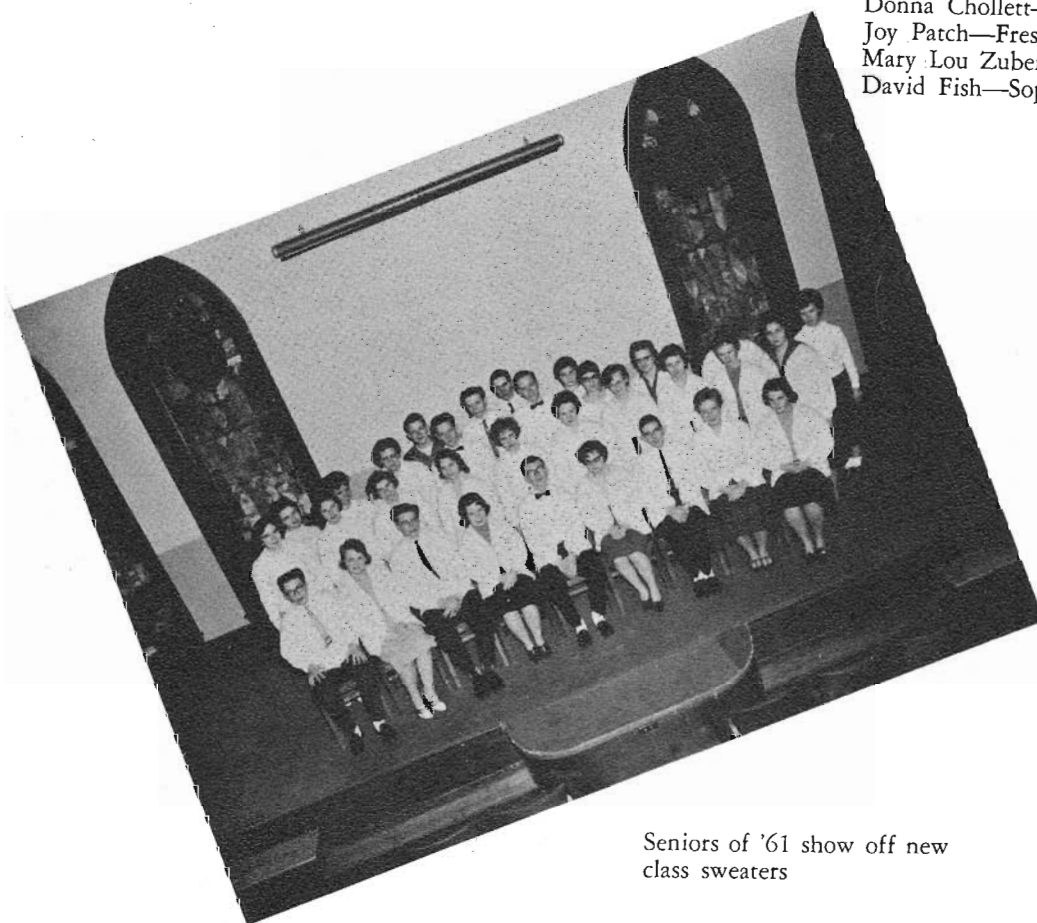
Gary
Wold



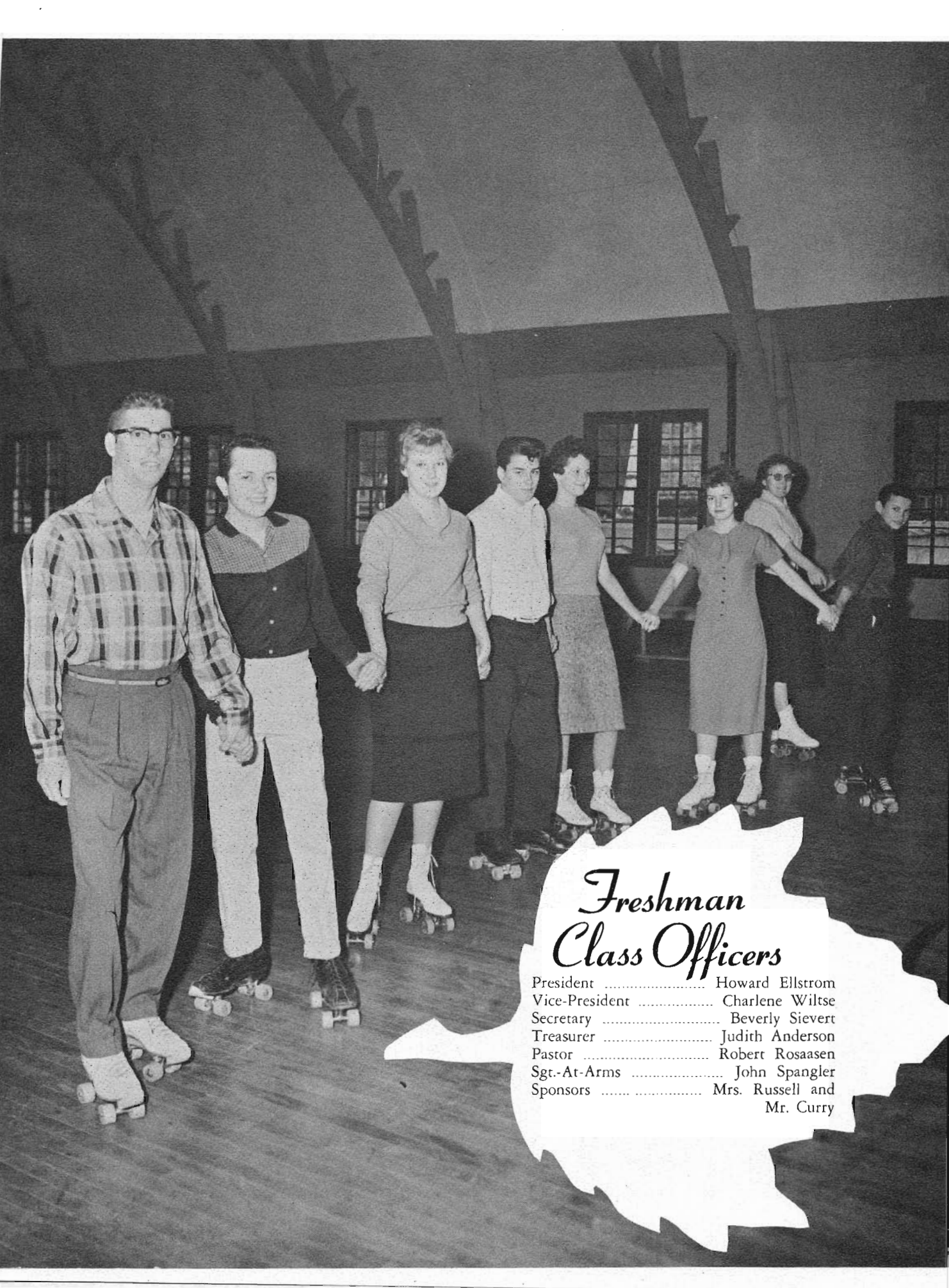
NEW ARRIVALS

Those who arrived too late to have their picture in the student section are:

Reginald Dockham—Junior
 Donna Chollett—Junior
 Joy Patch—Freshman
 Mary Lou Zuberbier—Sophomore
 David Fish—Sophomore



Seniors of '61 show off new class sweaters



Freshman Class Officers

| | |
|----------------------|-------------------------------|
| President | Howard Ellstrom |
| Vice-President | Charlene Wiltse |
| Secretary | Beverly Sievert |
| Treasurer | Judith Anderson |
| Pastor | Robert Rosaasen |
| Sgt.-At-Arms | John Spangler |
| Sponsors | Mrs. Russell and Mr. Curry |



Joyce
Amundson



Judith
Anderson



Maxine
Anderson



Arlen
Berthelsen



Nilan
Brown



Howard
Ellstrom



Emily
Hagen



Clyde
Hooper



John
Kanfield



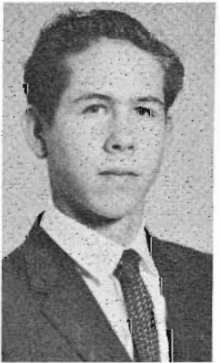
Barbara
Larsen



Larry
Lushanko



Loah
Moe



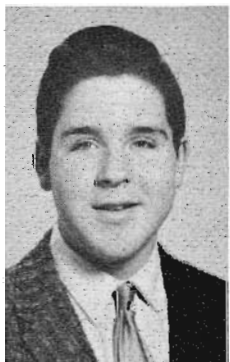
Ronald
Nelson



Douglas
Nielsen



Yvette
Petersen



Harold
Rhodes



Robert
Rosaasen



Beverly
Sievert



John
Spangler



Charlene
Wiltse



Aaron Moon, B.A.
Principal
Grades 7-8

Elementary School



Mrs. Elmer Merickel,
B.S. in Education
Grades 4-6.



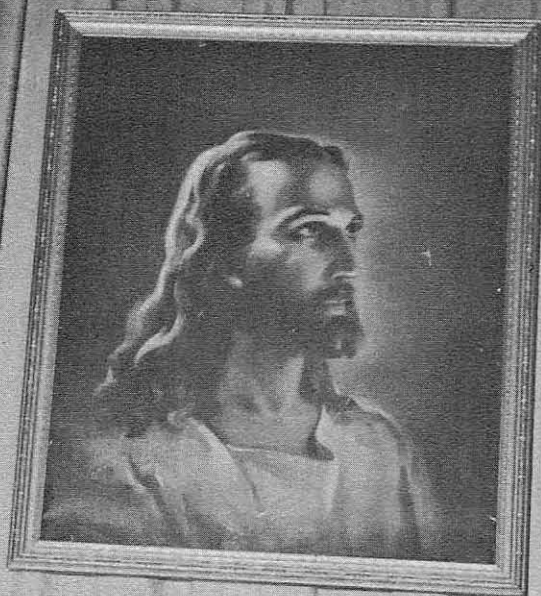


Mrs. Cecil Conquest
Grades 1-3



ELEMENTARY SCHOOL BUILDING





We Believe

that a school must have Christ as its center and have religious activities in order for the students to have a full and complete education.

Therefore we present those activities which have . . .

Religious Emphasis



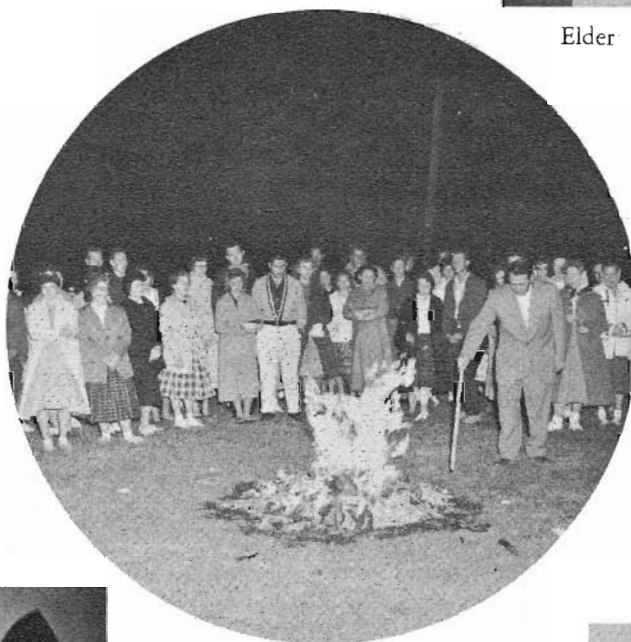
Elder Griffith gives
desired counsel.

During the Fall Week of Devotion we received special inspiration and counsel from Elder C. Wayne Griffith, the newly-elected Missionary Volunteer leader for the Minnesota Conference.



Elder Griffith delivers another
inspiring message.

Weeks of



Prayer



Elder Lauda inspires us to
sing.

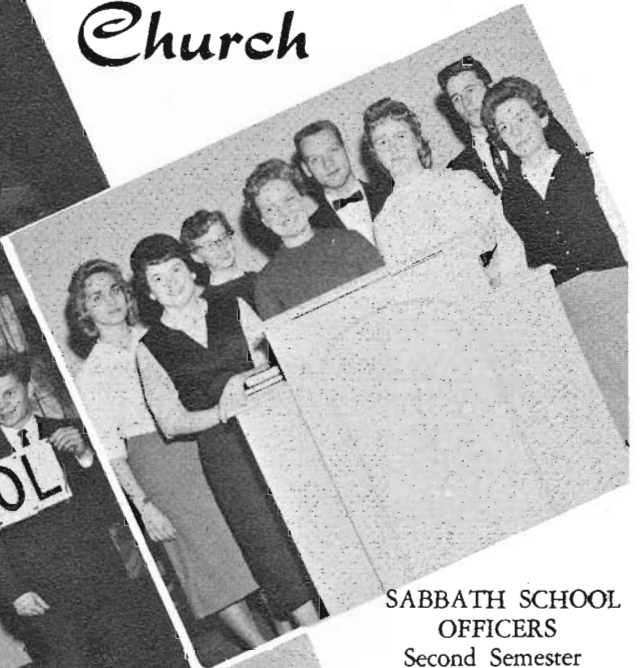
Our Spring Religious Emphasis Week was a thrilling experience for all as Elder C. H. Lauda, President of the Minnesota Conference, and Elder E. L. Minchin, Associate Secretary of the General Conference M.V. Department, combined their efforts to bring added spiritual uplift and guidance to students and staff.



Elder Minchin, beloved
world youth leader.

Sabbath School and Church

The Sabbath School Teachers Learn To Teach.



SABBATH SCHOOL OFFICERS

Second Semester

Leaders . . .

Lily Van Raden
Winston Bascom

Secretaries . . .

Jacquelyn Pierce
Edwin Eisele

Sponsor . . .

Mr. Bogdanovich



SABBATH SCHOOL OFFICERS

First Semester

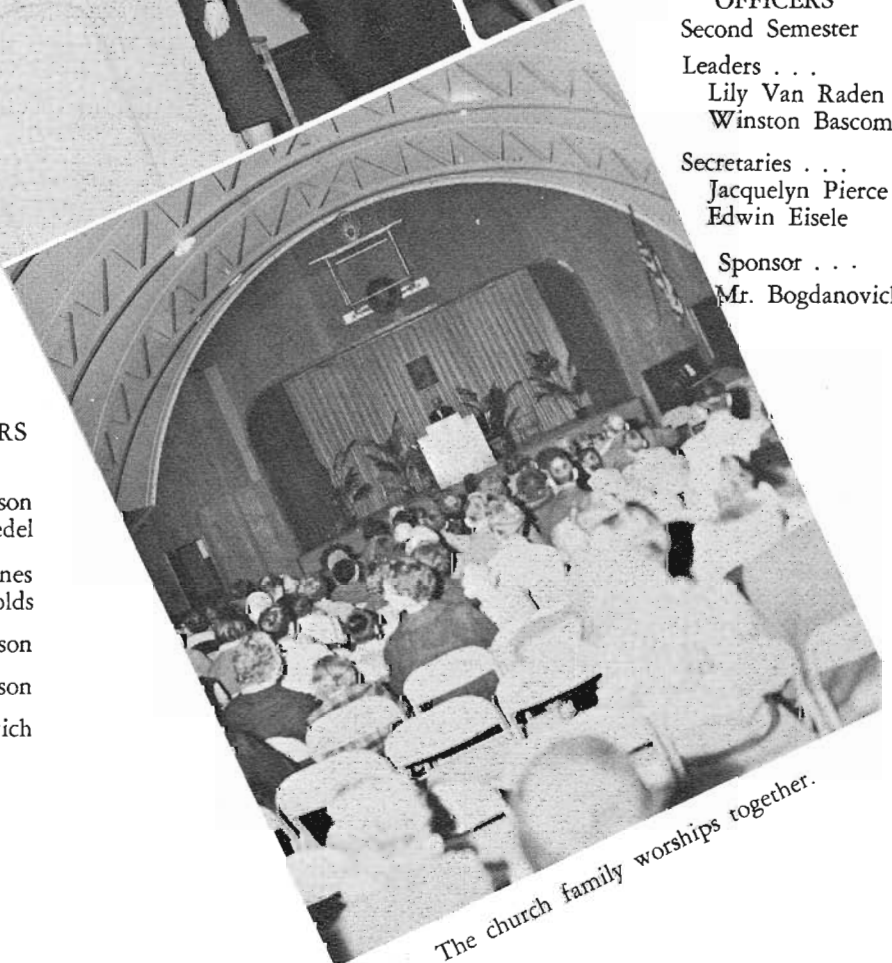
Leaders . . . Wayne Anderson
Norma Roedel

Secretaries . . . Dorothea Jones
Lee Reynolds

Chorister . . . Jerry Johnson

Pianist . . . Kristine Swanson

Sponsor . . . Mr. Bogdanovich



The church family worships together.

The Missionary Volunteer Society



FIRST SEMESTER OFFICERS

Leaders Esther Beyer
 Larry Misenko
 Secretaries Tom Lighthall
 Joanne Lushanko
 Sponsors Mrs. Sherwood
 Mr. Jensen



SECOND SEMESTER OFFICERS

Leaders Shirley Andersen
 Lee Reynolds
 Sponsors Mrs. Russell
 Mr. Curry, Mrs. Conquest

P r e s e n t s



Singing Bands — one of the "Share Your Faith" activities.



Returned missionary, Paul Coleman, brought inspiration through his outstanding program.



Winning Team in the Bible Quiz — Joy Rosaasen and Donna Sherwood.

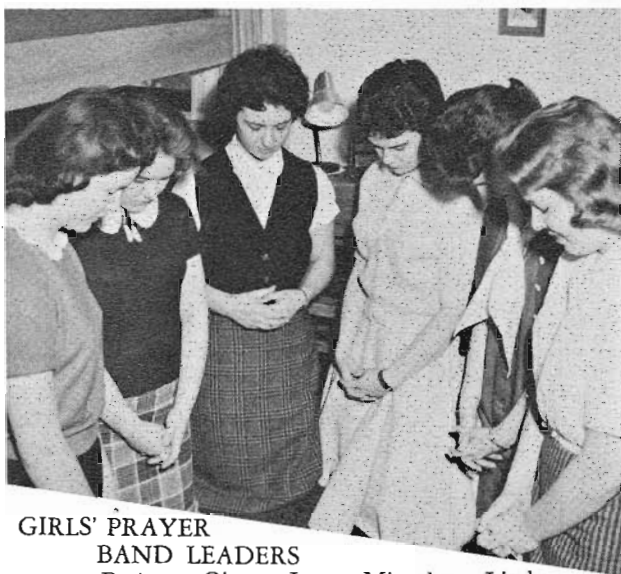
President Bonita Borg
 General Vice-Pres. Wayne Anderson
 Vice-Presidents Saundra DeRemer
 Esther Beyer, Margi Kisor, Becky
 Christensen, Norma Roedel.
 Secretaries Martha Roberts
 Donna Rae Nielsen
 Sponsors Elder Felton
 Mr. Hooper



Program in Pipestone.



It takes a lot of work for a program.



GIRLS' PRAYER

BAND LEADERS

Barbara Olson, Lynn Misenko, Linda Lair, Judy Burghart, Luette Rosenthal, Sandra DeRemer.



BOYS' PRAYER

BAND LEADERS

Bob Hedger, Lee Reynolds, Allen Truax, Ron Lauer, Larry Misenko, Walter Shultz, Gene Chollett.

Temperance Club

Oratorical Contest Winner



Prayer Bands

Walter Shultz receives his prize.



Oration Competitors

Walter Shultz,

Rosemary Anderson, Lily VanRaden, Margi Kisor, Donna Rae Nielsen.



Winners of the Temperance Contest

Essay — Rosemary Anderson

Poster— Judy Thayer and Kit Swanson

Jingle— Kit Swanson, Judy Thayer, Clyde Hooper



We Believe

that not all learning comes from books, for in order to develop leaders of tomorrow, we form organizations which give opportunities to strengthen student leadership qualities; therefore we present our . . .

Organizations

FIRST SEMESTER OFFICERS

President David Schwab
 Vice-Pres. Marge Kisor
 Secretary Jean Spangler
 Treasurer Martha Roberts
 Sgt.-at-Arms Allen Truax
 Sponsors Mr. McClain
 Mr. Bogdanovich



NOMINATING COMMITTEE

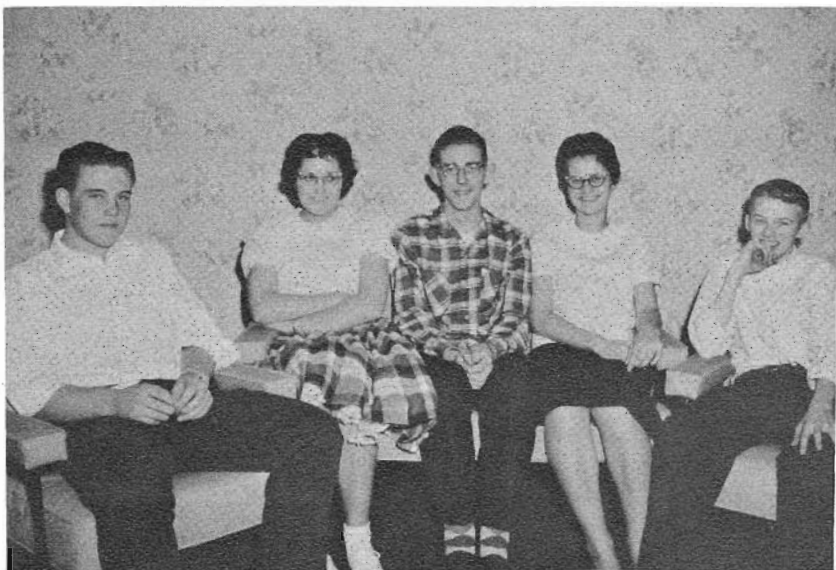
Allen Truax, Chairman
 Audrey Lundquist
 Rosemary Anderson
 Linda Lair
 Loren Christensen
 June Thygeson
 Charles Peck
 Lynn Misenko
 Beverly Sievert
 Eddie Rosaasen

Associated



Sports activities at the
fall picnic.



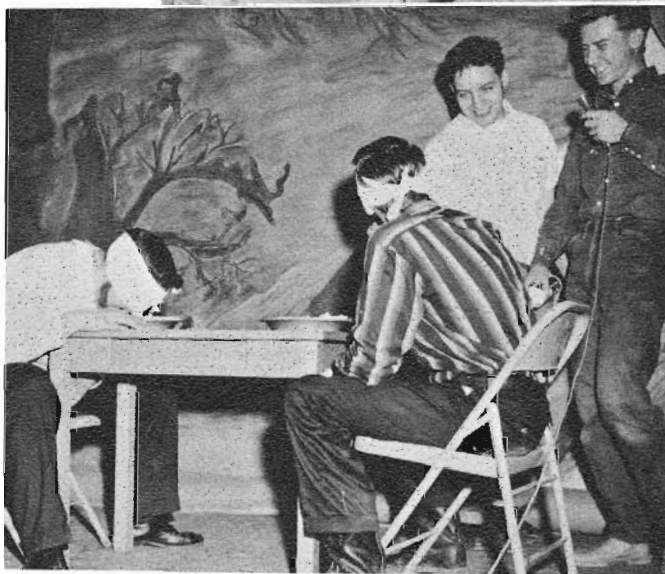


SECOND SEMESTER OFFICERS

| | |
|--------------------|------------------|
| President | Dean Dittberner |
| Vice-Pres. | Lynn Misenko |
| Secretary | Beverly Burghart |
| Treasurer | Judy Olson |
| Sgt.-at-Arms | Dwight Mills |
| Pastor | Eddie Rosaasen |

Student Body

Anything's possible at Halloween.



"Did you ever eat a pie blindfolded?"
John and Harold did at the Halloween party.



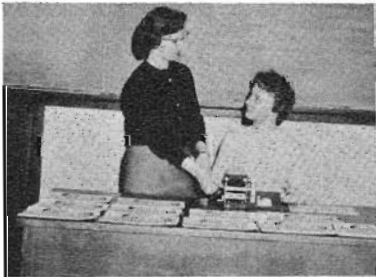
One of the projects of the A.S.B.
was the skating pond.

the NORTHERNER



EDITORS DESERVING OF CREDIT

Editor-in-Chief, Rosemary Anderson, and Associate Editor, Dorothy Swanson, deserve much of the credit for making our school paper one of the best to be edited by denominationally operated academies.



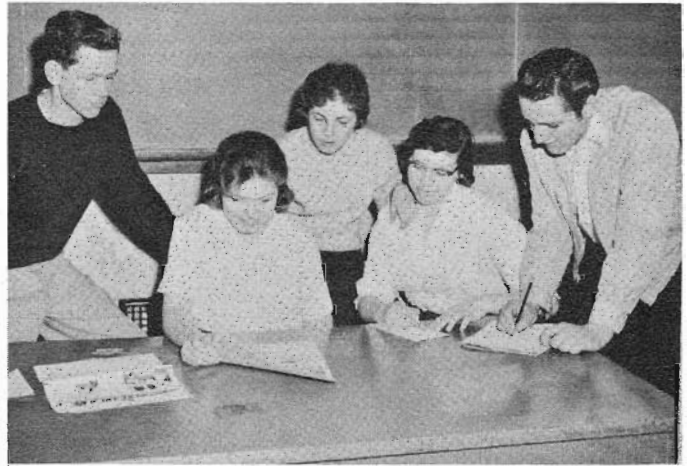
CIRCULATION JOB IS BIG ONE

Circulation Managers, Donna Rae Nielsen and Marie Erickson have a bigger job than ever this year with the increased list of subscribers to the *Northerner*. It takes many hours to get an issue ready to take to the post office for mailing.



SPONSORS COMPLETE ANOTHER SUCCESSFUL YEAR

Mr. and Mrs. John Hooper are to be congratulated on the excellent work which has been done on the school paper for the past two years while under their sponsorship.



REPORTERS CONFER ON ASSIGNMENTS

In checking through the issues of the *Northerner* for this year, it is evident that the reporters have put forth a great deal of effort to make their individual columns a looked-for feature each month. The reporters are as follows: Fred Swenson — East Corridor Catchings; Saundra DeRemer—Streams in the Desert; Gerri Schlinker — West Corridor Catchings; Esther Beyer — Campus Guests; Gene Chollett — Sports.

SUPPORTING EDITORS ALSO

CREDITED

The Assistant Editors, Virginia Olson and Lynette Prange, also the Feature Editor, Martha Roberts, deserve credit for making our paper what it is.



TYPISTS WORK HARD TO MEET DEADLINE

The time is 11:55 p.m. What's that noise I hear? Why it's just the Typists, Judy Thayer and Bonnie Waterhouse, rushing to meet another deadline at the press.

Editor-in-Chief
Linda Lair

Sponsor
Mrs. Pierson

Sponsor
Elder Noble



Associate Editor
Benny Chilson

Assistant Editor
Becky Christensen

Roster Editor
Carole Hanson

Typist
Kathie Trumble



Art Editor
Kristine Swanson

Advertising Manager
Dean Dittberner



Photographer
Mr. Bigdanovich

Snapshot Editors
Norma Roedel
Jerry Johnson





Crescit Eundo

FIRST SEMESTER OFFICERS

President Sandra DeRemer
 Vice-Pres. Donna Rae Nielsen
 Secretary Mary Jane Branson
 Treasurer Helen Kupcho
 Sgt.-at-Arms Judy Hammerback
 Chorister Jackie Pierce
 Pianist Donna Shamberg

SECOND SEMESTER OFFICERS

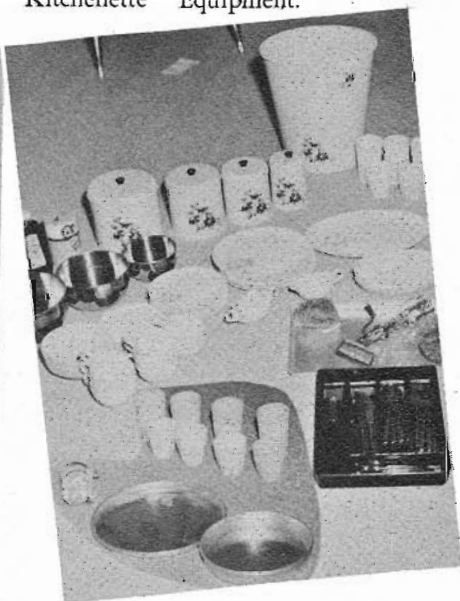
President Karen Kaldahl
 Vice-Pres. Judy Dahl
 Secretary Donna Westerman
 Treasurer Donna Chollett
 Sgt.-at-Arms Jayne Tucker
 Chorister Judy Thayer
 Pianist Judy Olson



Featured at Open House
 "How the Story Grew."

The Style Show
 presents
 RIGHT AND WRONG

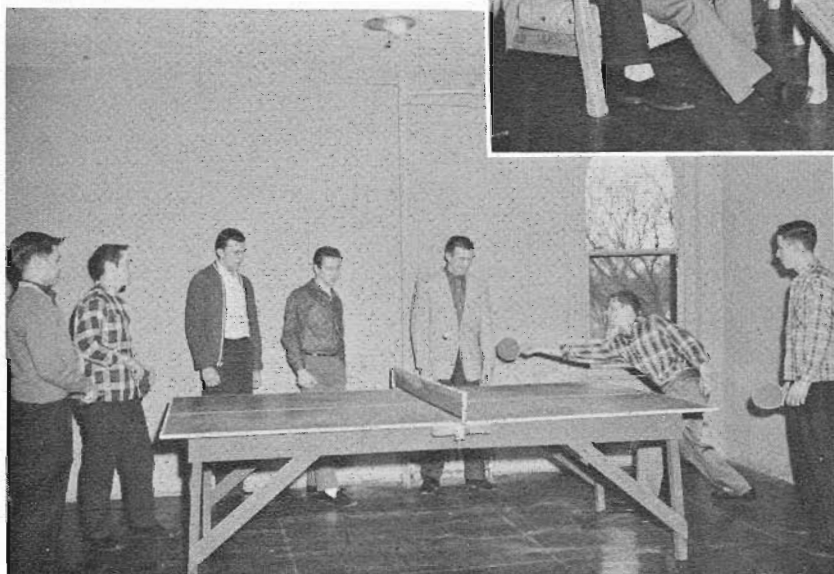
A Valentine gift to the girls from
 their mothers and their deans —
 Kitchenette Equipment.



Knights of East Hall

First Semester Officers

President Walter Shultz
 Vice-Pres. Larry Misenko
 Secretary Allen Truax
 Treasurer Wayne Wold
 Sgt.-at-Arms Bob Hedger
 Pastor Wayne Anderson



Second Semester Officers

President Ronald Lauer
 Vice-Pres. Gene Chollett
 Secretary Lee Reynolds
 Treasurer Leland Kupcho
 Sgt.-at-Arms Charles Wold
 Pastor Edwin Eisele

Bruce McKellip auctions
 food for the
 Boys' Club Sale.



One of the major
 activities is
 basketball.



Everyone enjoyed the food
 Mrs. Hinde made for the
 Christmas Party.



Academy



Vocal

Senior Trio
Rosemary Anderson, Gwendolyn Husted,
Margi Kisor



SECOND SEMESTER OFFICERS

| | | |
|----------------|---------------------|---------------|
| President | Secretary-Treasurer | Sgt.-at-Arms |
| Charles Peck | Marie Erickson | Linda Lair |
| Vice-President | Pastor | Chronicler |
| Wayne Anderson | Lynnelle Samarza | Walter Shultz |



Junior Trio
Judy Thayer, Kit Swanson
Jacquelyn Pierce

Choir



Group

Choir Pianist
Joyce Jacobson



Alone or together their voices make melody



Wayne Anderson and Linda Lair



HARMONIOUS "FOURS"

Walter Shultz
Wayne Anderson
David Schwab
Donald Larsen

Dwight Engelrup
Bennett Chilson
Jerry Johnson
Charles Peck

Brass Quartett
Dwight Engelrup
Larry Misenko
Wally Shultz
Wayne Anderson



Academy



Trombone Soloist—Wally Shultz



First and Second
Semester Band Officers

Instru

Band

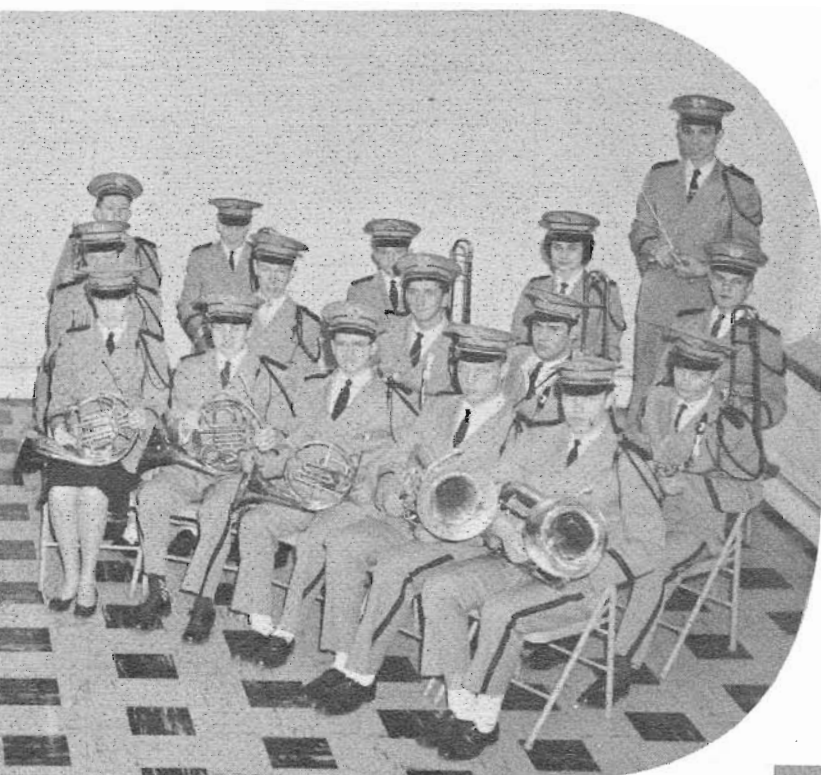


Girls' Trumpet Trio

Judy Thayer
Charlene Wiltse
Sandy Rasmussen

Boys' Trumpet Trio

Dwight Engelrup
Warren Anderson
Eddy Rosaasen



Saxophone Trio

Lyle Godfrey
Jerry Johnson
Lee Reynolds

mentalists

Beginners Band



Medical

Cadet

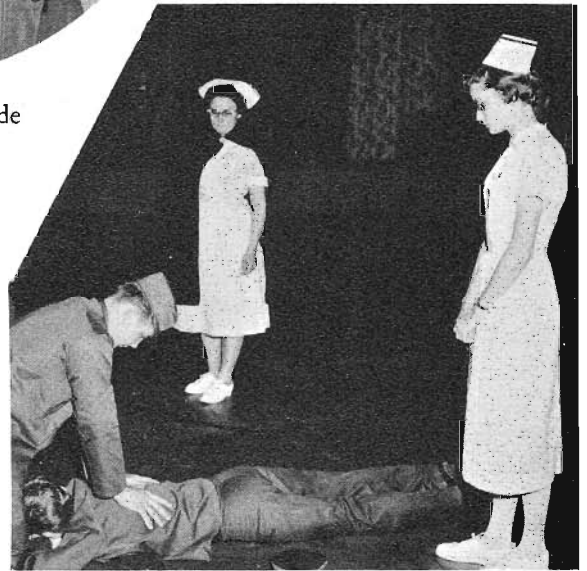
Corps



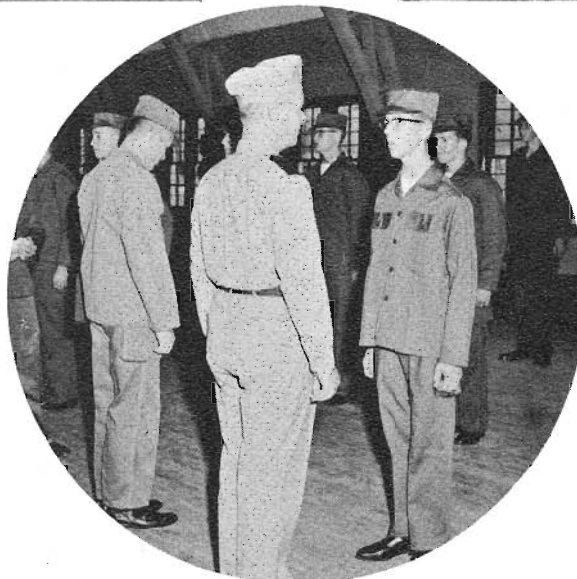
Lt. Thomas Hinde



"Platoon, attention."



Mrs. Russell and Mrs. McMillen instruct the First Aid Class.



Col. Clark Smith inspects the corps.



We Believe

that in order to have good mental and physical health we must have relaxation which is obtained from banquets, athletic activities, Saturday night entertainments, therefore; we present these . . .

Features



Handshake



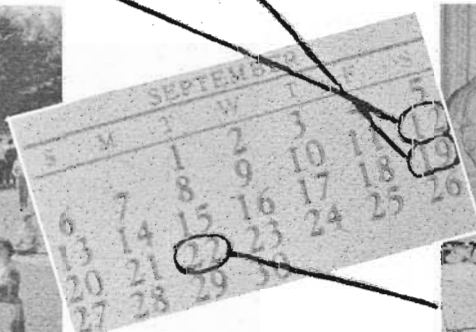
Progressive Hike



Progressive Parties



Dinner line is always a popular place at a picnic.



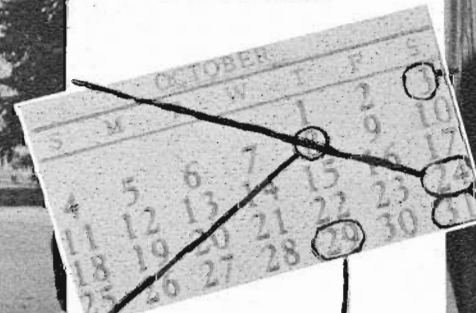
Hi-Lite



Ingathering Field Day



School Picnic



Review



Pianist Sjobiarn



Northerner Campaign Opens



Northerner Campaign Side Leaders



Halloween Party



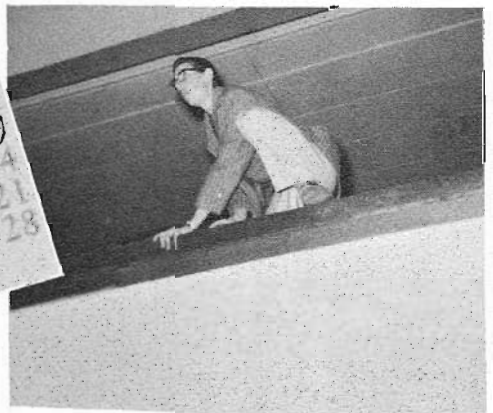
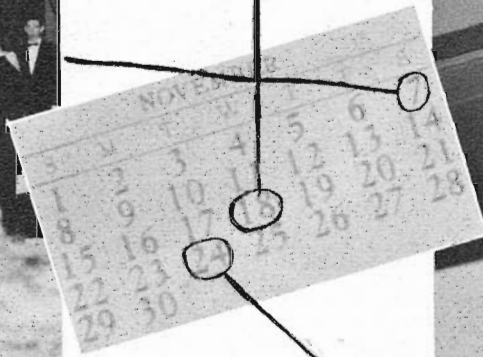
Not a wedding—just seniors' coming out.



President and Vice-President officiate at Reception



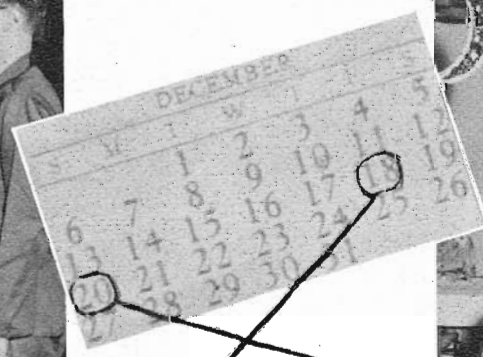
Choralaires Concert



Maple Log Promotion Begins



Col. Smith Inspects M.C.C.



Northerner Banquet



Christmas Vespers



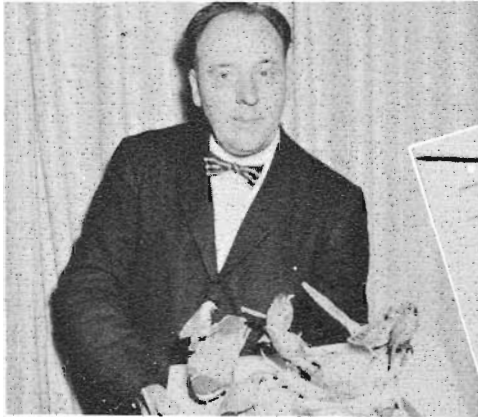
Girls Hold Open House



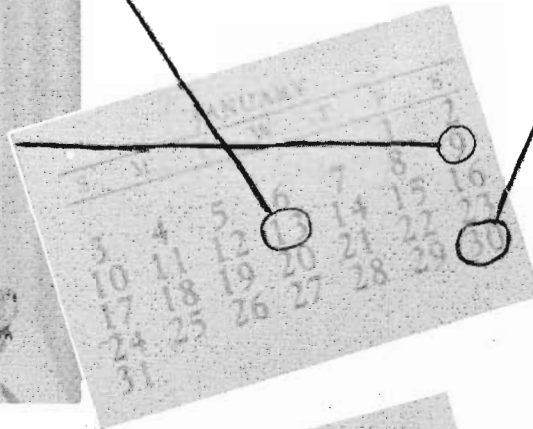
Classes organize



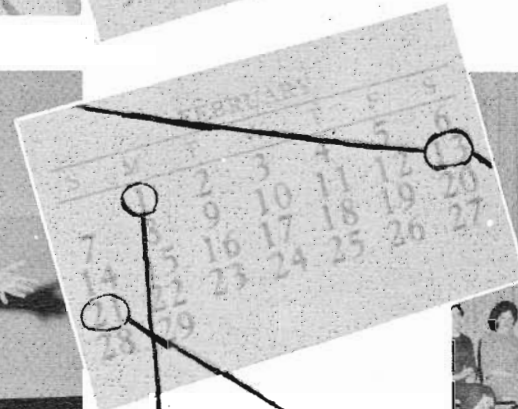
Band and Choral Group-Winter Concert



Paul Leonard, bird imitator



Runner-up, Rosemary Anderson, delivers her Temperance oration.



Teams compete in Bible Quiz



Seniors enjoy lunch on Recognition Day.



Our beautiful new Highway Traveler.



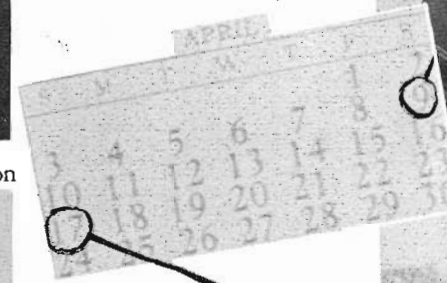
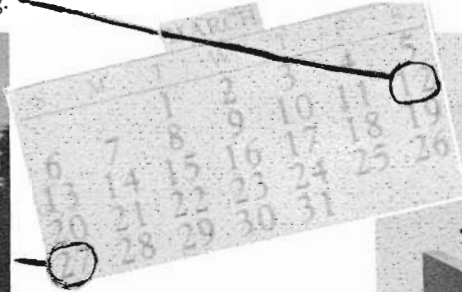
Girls' Benefit—"You are my Queen of Song."



Unionaires



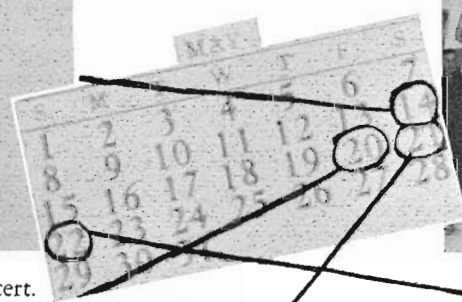
"Beautiful Spring," theme of Boys' Reception



Senior Benefit presents talent



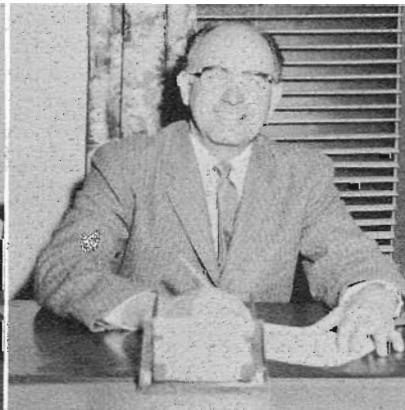
Larry Misenko, soloist for spring concert.



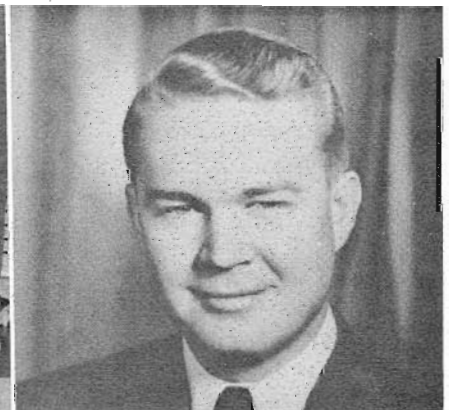
Seniors go to Lincoln



Elder C. Wayne Griffith
Consecration

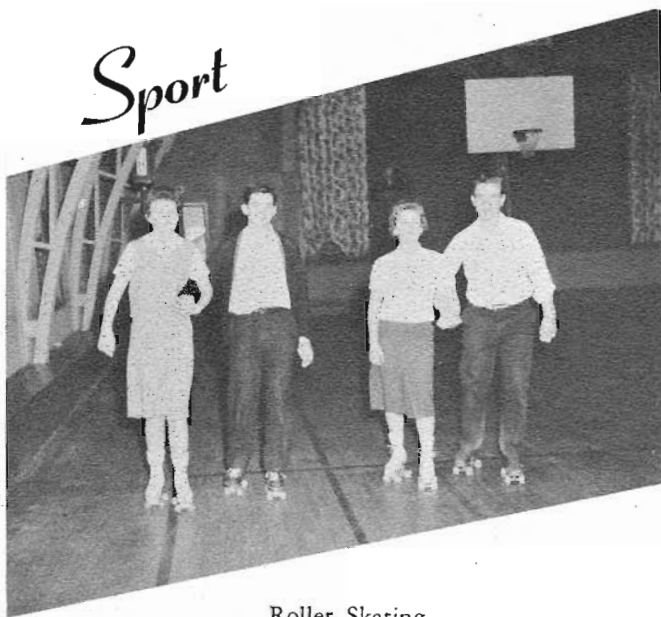


Elder C. H. Lauda
Baccalaureate



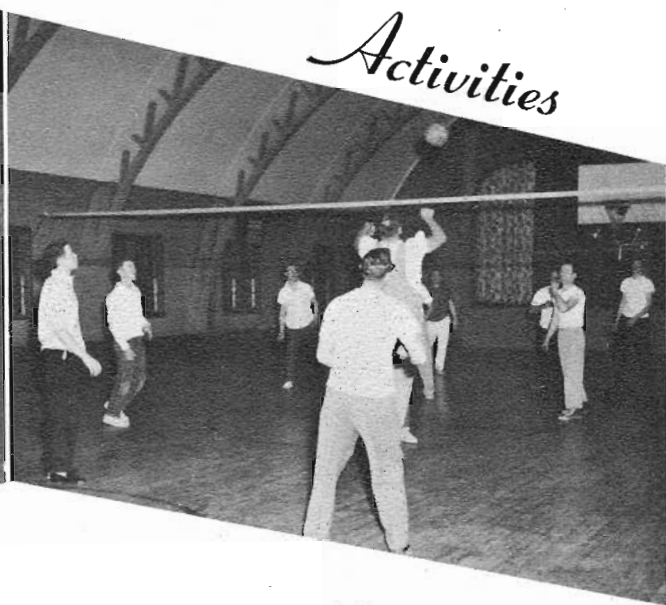
Elder Sidney Allen
Commencement

Sport



Roller Skating

Activities

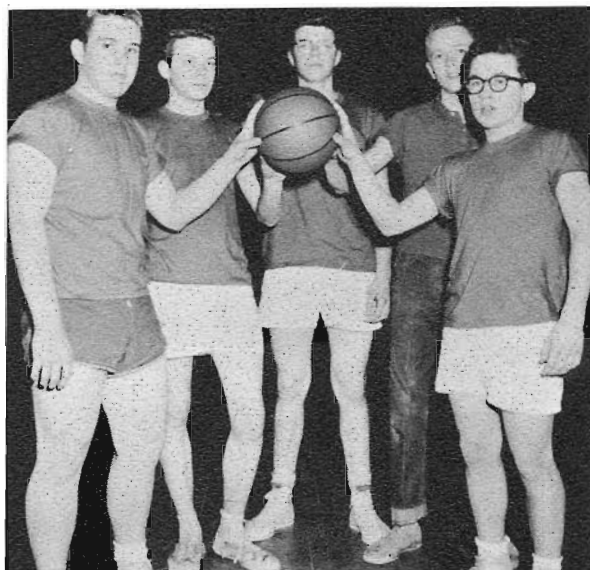


Volleyball



Senior Basketball Team

Al Truax—captain, Ron Lauer, Dickie Dean, David Schwab, Wally Shultz, Leland Kupcho, Wayne Anderson, Larry Misenko.

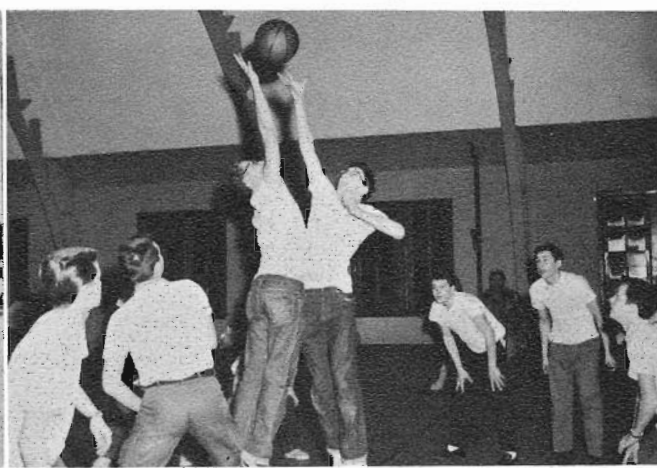


Junior Basketball Team

Tom Lighthall—captain, Loren Christensen, Dwight Mills, Ron Millard, Danny Simpson.



Ice Skating



Sophomore and Freshmen basketball game.



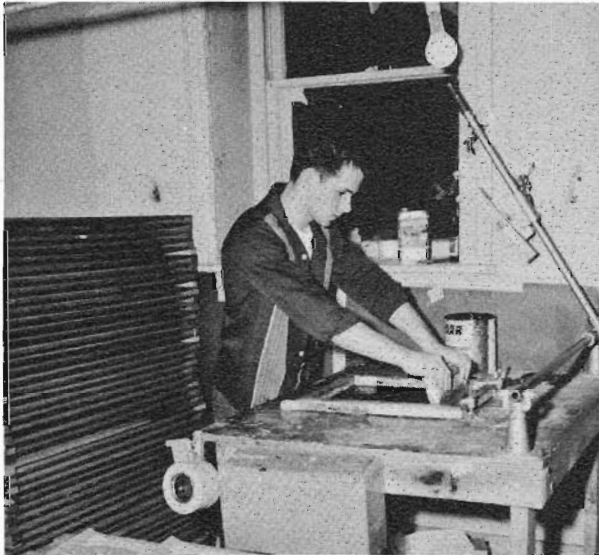
We Believe

that not only the mind needs training but also the hands, for we need to learn the invaluable habits of thrift and dependability; therefore we present the departments where we received our . . .

Vocational Training



Mr. Zeller supervises student labor in the assembly room of the Craftshop.



Wayne makes silk screen covers for the bindery.



Keeping the books straight



They keep the school spic and span



Is your absence excused?



The readers keep our assignments graded



"Keep those boys in their rooms."



"Could we have it a little more quiet, girls?"



A general procedure that takes place three times a day.



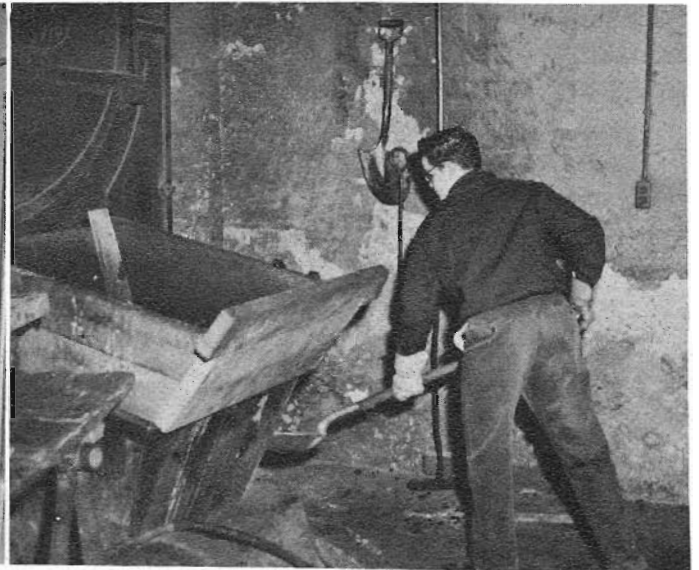
Benny, our efficient baker frosting his tea rolls. —83—



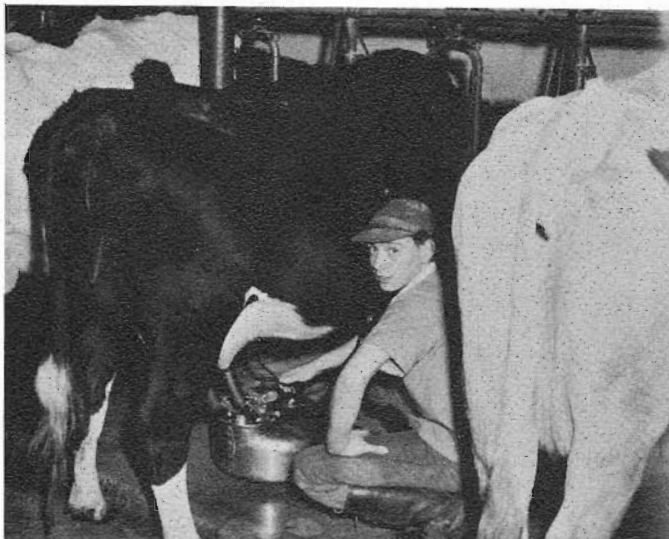
Our clothes are cleaned by these girls.



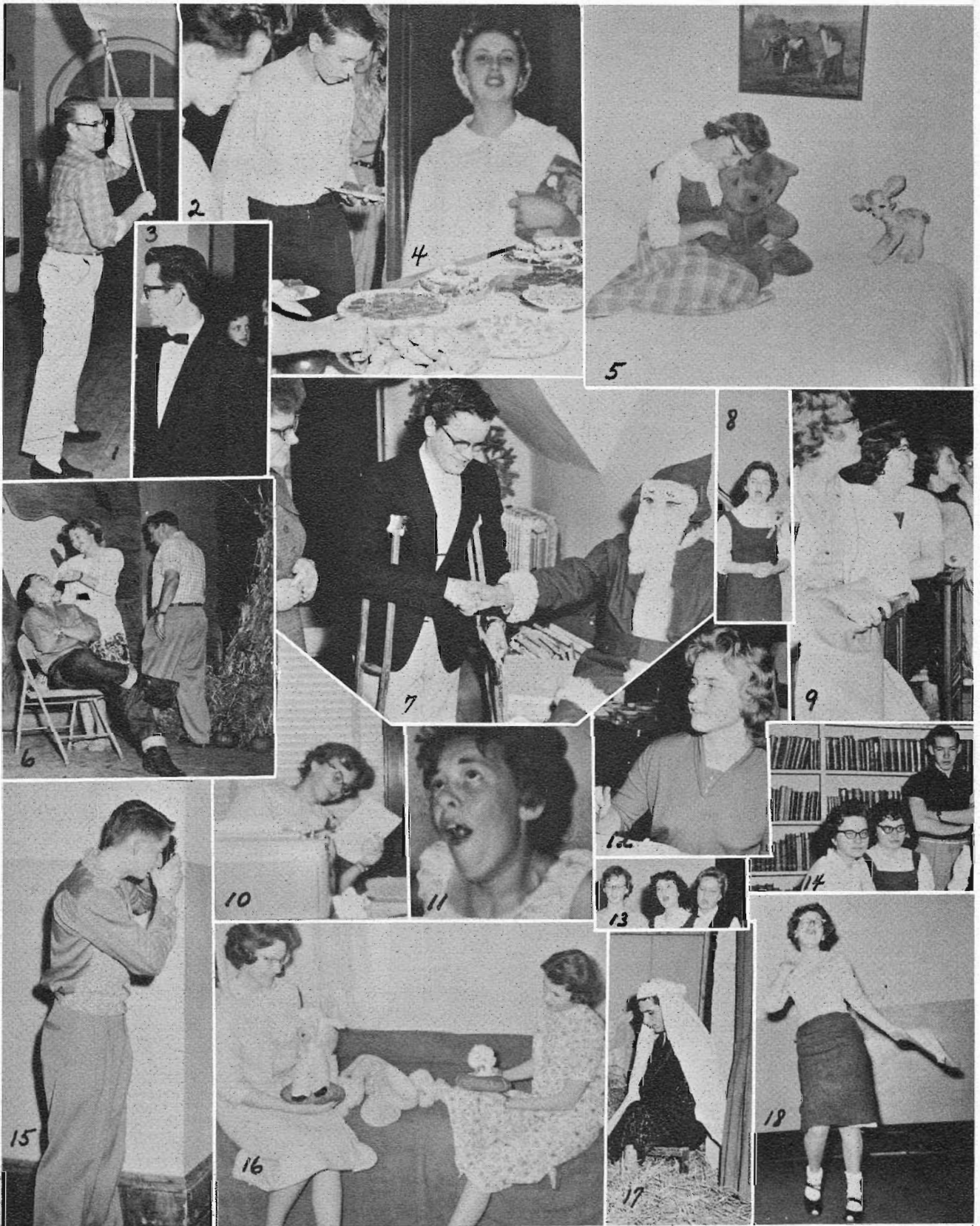
They keep our school in good shape



He keeps our rooms warm.



The farm boys performing some of the necessary chores.

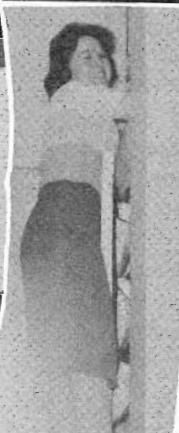


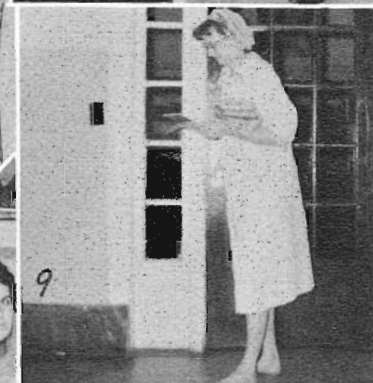
1. Take it easy with that broom!
2. Oh that painful choice.
3. Imp or gentleman?
4. You mean it's still study period?
5. Me and my teddy bear.
6. Better be good or Pappa will spank.
7. Santa always remembers those who have been good!?!
8. ???!??
9. Say girls, isn't that the wrong direction?
10. Can't you make out the copy, Judy?
11. Just a taste of your own medicine.
12. Go ahead and say it, Lily.
13. It takes concentration to make harmony.
14. Make them be good, Chuck.
15. T'aint fair shootin' around corners.
16. Margi and Marti's Merry Menagerie.
17. Joseph
18. "I'll tell you that was the funniest thing."—85—



1. Without a song?
2. Cramming for the Bible quiz.
3. Busy Beavers.
4. Expression.
5. Anyone got a marshmallow?
6. What's going on around here anyhow?
7. You didn't!
8. Keep your heads in!

9. Bad news?!?
10. A bedtime story for Armanda.
11. Interesting?
12. Paper dolls.
13. "Here comes the — " Vice President.
14. "This little piggie stayed home . . . "
15. Cathy Jill.





1. What's so runny, Becky?
2. Squaw Adams!
3. Who's that hiding beside you, Dot?
4. Watch out, Kathie!
5. Atten-(dant) (tive) Schwab.
6. One must get their exercise, musn't they Donna.
7. Such a great big sundae! And all for Saundra.
8. Pretending or dreaming, Judie?
9. Whatever are you doing in Main Hall like that?
10. Kitty playing peek-a-boo.

11. Watch out, or the snapshot will catch you.
12. Wally with his mouth open again.
13. Don't they look angelic?
14. Sweet day dreams, Ginny?
15. Ready for that fly, Donna Rae?
16. Cold but happy hugging a tree?
17. Nell, is that you?
18. What was that last remark?
19. Outta my way!
20. Alone in a crowd!



We Believe

that our students and patrons realize the important position our business friends hold in the lives of us all, and we are sure that they will want to patronize those who have helped to make our annual possible; therefore we present our . . .

Advertisers

PUZZLED ABOUT COLLEGE?

Let UNION Help You
Fit the Pieces Together

WRITE: Secretary Of Admissions
UNION COLLEGE
Lincoln 6, Nebraska

MAJORS AND MINORS
WHAT SHALL
MINE BE??

WHAT
WILL IT
COST???

ENTRANCE
REQUIREMENT?

B.A.!

B.S.!

WHAT IS
A COLLEGE
HOUR?

G.P.A.?

ROOM
RESERVATION?

HOW CAN
I PAY?

128
COLLEGE
HOURS?

HOW DO I GET
A JOB
WHEN I
GRADUATE?

THEOLOGY
REQUIREMENTS?

WE AT UNION WOULD WELCOME
THE OPPORTUNITY TO HELP YOU
SOLVE THESE AND ANY OTHER
PROBLEMS YOU MAY FACE.



"MAKE IT A FEDERAL CASE"

Federal Container Corp.

4300 Olson Highway

Minneapolis 22, Minnesota

*Minnesota Conference
of
Seventh-Day Adventists*

and

*Minnesota
Book and Bible
House*

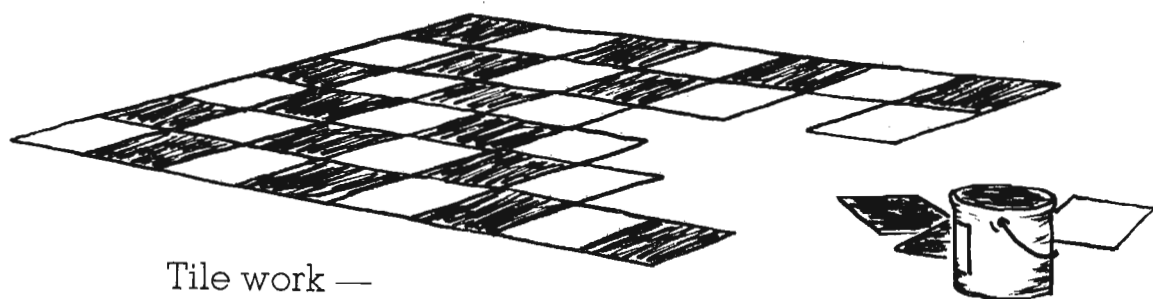
1854 Roblyn Avenue

St. Paul 4, Minnesota

Congratulations Seniors of '60

Jacobson Floors Incorporated

Complete Floor Service



Tile work —

Floor laying —

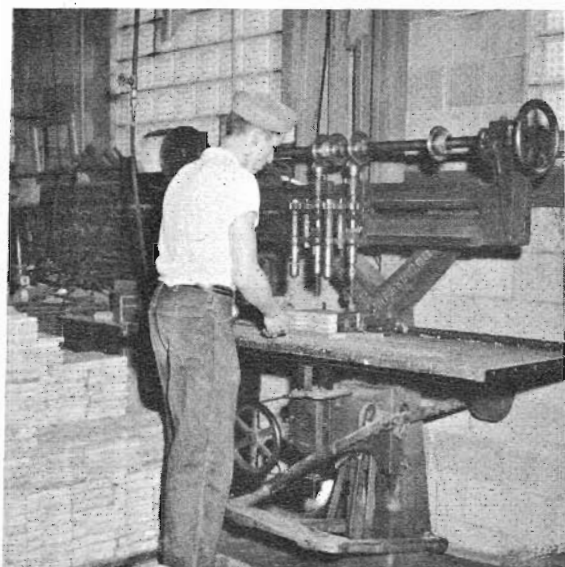
Carpet laying —

Floor sanding and finishing —

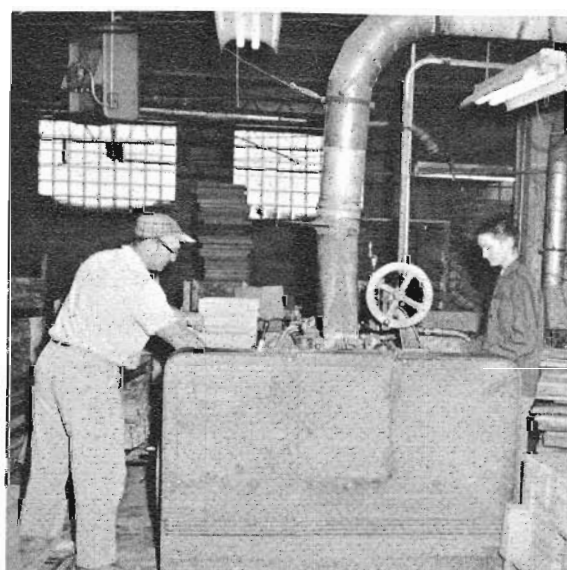
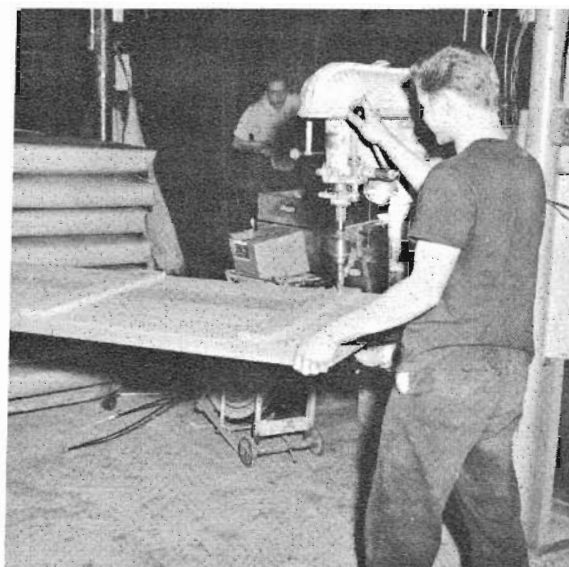
3255 Bryant Avenue South

Minneapolis 8, Minnesota

TAylor 5-0538



Best
Wishes
Seniors

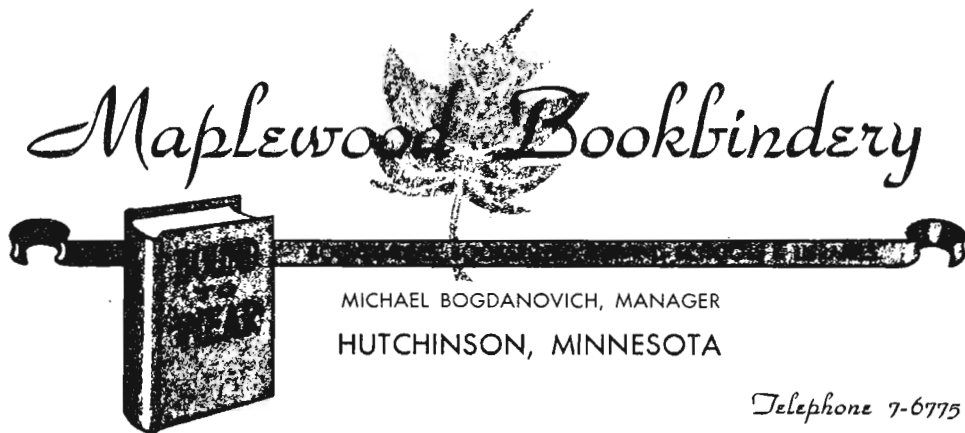


made by
MAPLEWOOD CRAFTSHOP
for



1712 Merchandise Mart
CHICAGO 54

ILLINOIS



MICHAEL BOGDANOVICH, MANAGER
HUTCHINSON, MINNESOTA

Telephone 7-6775

**THE Ultimate
IN
BOOKBINDING!**



ALTMAYER FARM SERVICE

Grain — Feed — Seeds
Fertilizer — Grain Cleaning

• Phone 4035

Hutchinson

Minnesota

Best Wishes

SUNNYDALE ACADEMY

FOODS

Cho-pats

Chic-ketts

Congratulations
Seniors of 1960

BECHIK PRODUCTS

St. Paul

Minnesota

Congratulations

QUAST'S FURNITURE STORE

137-139 Main South

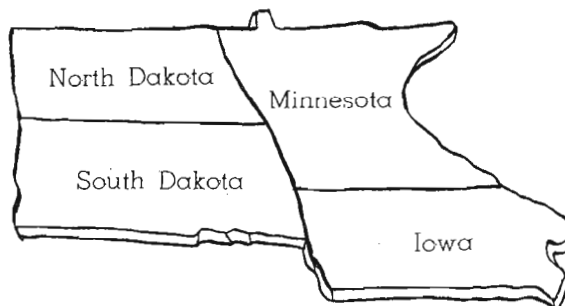
Hutchinson

Minnesota

NORTHERN UNION CONFERENCE OF SEVENTH-DAY ADVENTISTS

501 Forest Avenue
MINNEAPOLIS 3, MINNESOTA

Phone FE 3-2497



Northside Grocery

578 Prospect

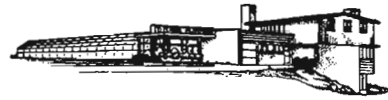
Hutchinson

Minnesota

Phone 7-2445



Carr Flowers



"Flowers for every occasion."

Phone 3542

Hutchinson

Best Wishes
to the
SENIOR CLASS

Stearnswood, Inc.

216 Main South

Hutchinson

Phone 5285

Congratulations

Class of 1960

Carly's Shoes

24 Main North

Hutchinson, Minnesota

Phone 6132

CONGRATULATIONS AND

BEST WISHES

TO THE

CLASS OF 1960



CITIZENS BANK

HUTCHINSON

MINNESOTA

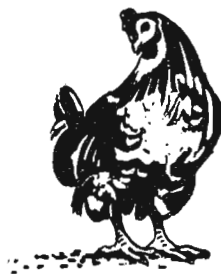
Member Federal Deposit Insurance Corporation

BRUNBERG

**SORENSEN & OLESON
OIL COMPANY**

Hutchinson 305 Bluff Minnesota
Phone 1955

FARMERS PRODUCE



Phone 7-4305

Hutchinson

Minnesota

TRIPLE D CAFETERIA & BAKERY . . . Minnesota's only small town cafeteria

WYLIE TEXACO . . . Main & Fourth Avenue Northwest, Hutchinson

LLOYD'S RED OWL . . . congratulations and best wishes

KOCK JEWELERS . . . in Hotel Jorgenson

Congratulations Seniors!

*Leslie
Paper
Company*

500 South Third Street

Minneapolis, Minnesota

Congratulations!

Town and Country Hardware

Your General Electric and
Maytag Dealer

Hutchinson

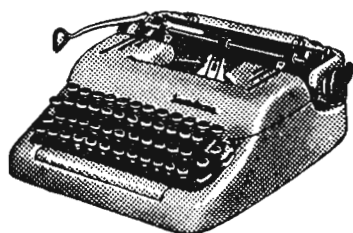
Minnesota

the
Speed-O-Lag Products
incorporated



All Types of Industrial Finishes
2386 Wycliffe St. St. Paul 14, Minn.

The Typewriter Shop



1510 St. Germain Street
St. Cloud, Minnesota

Congratulations Seniors!

C. H. Stocking

Machine Shop Power Tools - Machine Work
Sporting Goods - Wisconsin Air-Cooled Engines
Delta Power Tools - South Bend Lathers
Electric Motors
Electrical Appliances - Motor Rewinding

Hutchinson, Minnesota

Best Wishes Seniors!

GEORGIA-PACIFIC

CORPORATION

Redwood Division

35 Wacker Drive
Andover 3-6025

Chicago 1, Illinois
Teletype CG 1394

ALRICK'S

MEN'S CLOTHIERS



Dress Right—You Can't Afford Not To!

Hutchinson,

Minnesota

Phone 7-1195



DAIRY QUEEN

Phone 7-4145

Hutchinson

Minnesota



JANOUSEK'S FOOD

Hutchinson

Minnesota



La Salle

Cleaners

Hutchinson

Phone 4555





Fischer's New Bakery

Wedding Cakes — Pastry — Cookies

Hutchinson

Minnesota

Phone 7-1475



EXCELLO ICE CREAM

**Excel Ice Cream Company,
Inc.**

Hutchinson, Minnesota



Plowman Motors



Your Friendly Ford - Mercury Dealer

Hutchinson

Minnesota



Best Wishes, Seniors

S & L Stores

Hutchinson, Minnesota



Johnson Super Value

Quality Foods for Every Need!

Your friendly food store in
Hutchinson, Minn.

Phone 6275

Congratulations Class of 1960

Simonson Lumber

Wholesale and Retail
Lumber and Building Materials

Phone 6175

Hutchinson, Minn.

MYRON WIGEN

CHEVROLET CO.



New and Used Cars and Trucks

Phone 2765

Hutchinson

Minnesota

Home

Bakery

8 North Main

Hutchinson Minnesota

Phone 2145



Best Wishes



Sun-Lite Dairy

Wholesale and Retail Quality
DAIRY PRODUCTS

Hutchinson

Minnesota

Phone 2302

R_x

Popp Rexall

Drug

Phone 5445

2 Main South

Hutchinson, Minn.

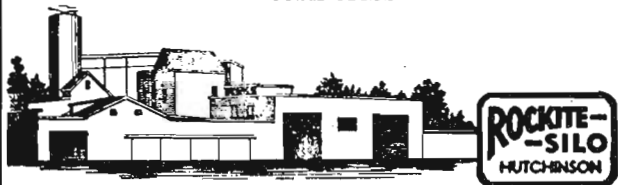


ROCKITE SILO, INC., HUTCHINSON, MINN.

Phone 2711

THE MODERN CONCRETE MANUFACTURING PLANT

silos — ready mix — blocks — tile
corn cribs



Congratulations

HEIL & DOUGLASS DRUG STORE

"Your Friend for Health"

Arnold Heil, owner

Phone 1935

Hutchinson

Congratulations

ZILA HARDWARE

Hutchinson



Minnesota

Congratulations Seniors of 1960

Canton Redwood Sales Co.

221 West Seventy-eighth Street

Minneapolis 19, Minnesota

Union 9-3221

BEST WISHES



G. R. Dahlgren,

Dist. Rep.

136 Main North

Hutchinson

Minnesota

Congratulations to the Class of 1960



2201 S. LaSalle St.

Chicago 16, Illinois

Calumet 5-1300

Phone 7-5795



BRINKMAN

Studio and Camera Shop
for fine portraits

Phone 7-4205

Hutchinson

Congratulations



FROM A FRIEND

Best Wishes

HOFFMAN PLUMBING & HEATING



222 Second Avenue S. E.

HUTCHINSON

MINNESOTA

Telephone 6105

Congratulations

and Best Wishes

HILLCREST NURSING HOME

William Lauer, Manager

WAYZATA

MINNESOTA

Best Wishes to the
Seniors of 1960

OKEN'S INC.

INSTITUTIONAL WHOLESALE
GROCERS

1011 Washington Avenue South

MINNEAPOLIS 15

MINNESOTA

DEVOE & RAYNOLDS

PAINTS
BRUSHES
VARNISHES
WALLPAPER



900 West Lake Street
MINNEAPOLIS 8 MINNESOTA
TAylor 2-3189

Congratulations Seniors

STANDARD PRINTING

offset and letterpress

Phone 4502

HUTCHINSON

MINNESOTA



ADMIRAL TRANSIT, INC.

2280 Ellis Avenue
St. Paul 14, Minn.

MI 6- 2981

MI 5-4534

Congratulations

MOEHRING MOTORS

BUICK — OLDSMOBILE
PONTIAC — OPEL
G.M.C. TRUCKS

SALES

SERVICE

HUTCHINSON

MINNESOTA

PHONE 2785

GLENCOE GREENHOUSES



"Flowers of the finest Quality
for any Occasion"

GLENCOE

MINNESOTA

Best Wishes to the
SENIORS OF '60

TOWNSEND-ROBERTSON

LUMBER COMPANY

MEMPHIS 3

TENNESSEE

Good Luck Seniors!

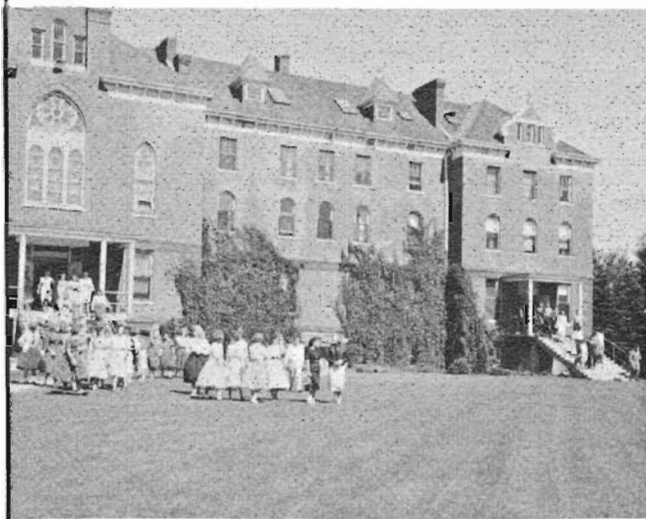
Morris Evans

WHOLESALE
FRUIT AND PRODUCE

5049 Osseo Road
MINNEAPOLIS 22 MINNESOTA

MAPLEWOOD ACADEMY

welcomes you



"Educating for Eternity"

MAPLEWOOD ACADEMY

HUTCHINSON

MINNESOTA

Write: Office of Supt.

Best Wishes Seniors

DOUG'S MUSIC SHOP

Complete Music Service

Pianos and Organs

GLENCOE

MINNESOTA

Congratulations

MEL'S RED AND WHITE SUPERMARKET

South Highway 15

HUTCHINSON

MINNESOTA

for expert automotive repair

S E E

PETERSON TRUCK SERVICE

Phone 3695

Third Avenue N.W.

HUTCHINSON

MINNESOTA

Congratulations

SENIORS OF 1960

H. KOHNSTAMM & CO., INC.

Suppliers of Laundry and

Dry Cleaning Supplies

*Textile-
Kraft*

PRODUCTS CO.

126 N. Jefferson Street

MILWAUKEE 2

WISCONSIN

Telephone : BRoadway 2-2800

Homestead Nursing Home

Phone: FEderal 8-7521

1800 First Avenue South

Minneapolis 3, Minnesota



Owned and operated by three Seventh-day Adventists.

180 Bed Capacity
24 Hour nursing care
Completely fireproof
Elevators
Kosher Foods

J. W. Pierce
L. E. Thayer
E. E. Perry

Applications accepted by mail
or phone for admittance or
employment.

R.N.'s
L.P.N.'s
Aides
Kitchen and Maintenance



NORTH WESTERN-HANNA FUEL COMPANY

816 • SECOND AVENUE SOUTH

MINNEAPOLIS 2, MINNESOTA

TELEPHONE FE 2-7211

Autographs

Student Roster

| | | | |
|---------------------|--|---------------------|---|
| Adams, Karen | Route No. 3, Ellsworth, Wis. | Husted, Gwendolyn | 715 Spruce Street N. |
| Amundson, Joyce | 245 Fifth Avenue N.E. | | Hutchinson, Minn. |
| | Hutchinson, Minn. | Hild, Ronald | 9937 Tenth Avenue So. |
| Andersen, Shirley | Route No. 3, Princeton, Minn. | | Minneapolis, Minn. |
| Anderson, Judith | Route No. 1, Box 29 | Jacobson, Joyce | 3255 Bryant Avenue So. |
| | North Branch, Minn. | | Minneapolis, Minn. |
| Anderson, Maxine | Tower Trailer Park | Johnson, Colleen | 517 Fifth Avenue S.E. |
| | Newport, Minn. | | Rochester, Minn. |
| Anderson, Rosemary | Route No. 2, Morton, Minn. | Johnson, Jerry | 216 Second Street N.E. |
| Anderson, Warren | 830 Elm Street N. | | Wadena, Minn. |
| | Hutchinson, Minn. | Johnson, Ruth Ann | Stewart, Minn. |
| Anderson, Wayne | 820 First St. N.W. | Jones, Dorothea | 745 No. Elm Street |
| | Watertown, So. Dakota | | Hutchinson, Minn. |
| Bascom, Winston | Nora Springs, Iowa | Jones, Ronald | Route No. 4, East River Road |
| Berthelsen, Arlen | Gatzke, Minn. | | Rochester, Minn. |
| Beyer, Esther | Route No. 2, Red Wing, Minn. | Kaldahl, Karen | 22 N.E. 11th Street |
| Blumenshein, Gay | 201 S.E. Fifth Street | | Faribault, Minn. |
| | Waseca, Minn. | Kanfield, John | 324 No. 20th Avenue W. |
| Borg, Bonita | Route No. 3, Box 84 | | Duluth, Minn. |
| | Grand Rapids, Minn. | Kisor, Margi | Box 271, Morristown, Minn. |
| Branson, Mary Jane | 3344 First Avenue So. | Kennedy, Gerald | Route No. 2, Box 147, Frederick, Wis. |
| | Minneapolis, Minn. | Koch, Catherine | 4240 Grant Street, Omaha, Nebraska |
| Bromme, Larry | 815 W. Boulevard, Duluth, Minn. | Kupcho, Helen | Blackduck, Minn. |
| Brown, Nilan | Route No. 3, Hinckley, Minn. | Kupcho, Leland | Blackduck, Minn. |
| Burghart, Beverly | Route No. 1, Sleepy Eye, Minn. | Lair, Edward | 623 24th Avenue No., Minneapolis, Minn. |
| Burghart, Dwayne | Fairfax, Minn. | Lain, Linda | 623 24th Avenue No., Minneapolis, Minn. |
| Burghart, Judith | Route No. 1 | Larsen, Barbara | Route No. 1, Box 7, Morgan, Minn. |
| Butters, Robert | Route No. 2, Oshawa, Ontario, Canada | Larsen, Connie | Route No. 1, Box 7, Morgan, Minn. |
| Butters, Ruth | Route No. 2, Oshawa, Ontario, Canada | Larsen, Donald | Route No. 1, Parker, So. Dakota |
| Chaffee, Karen | Route No. 3, Hinckley, Minn. | Larson, Leonard | Route No. 1, Box 63, Sedan, Minn. |
| Chilson, Bennett | Route No. 1, Byron, Minn. | Larson, Richard | Route No. 1, Box 63, Sedan, Minn. |
| Chollett, Donna | Route No. 1, Box 108, Zim, Minn. | Lauer, Ronald | 15810 Clarendon Drive |
| Chollett, Gene | Rt. No. 1, Box 108, Zim, Minn. | | Wayzata, Minn. |
| Christensen, Becky | Route No. 1, Box 120 | Lighthall, Thomas | 2200 55th Avenue No. |
| | Pipestone, Minn. | | Minneapolis, Minn. |
| Christensen, Beth | Route No. 1, Box 120 | Lundquist, Audrey | 3540 16th Avenue So. |
| | Pipestone, Minn. | | Minneapolis, Minn. |
| Christensen, Loren | Route No. 2, Wells, Minn. | Lushanko, Joanne | Route No. 3, Hutchinson, Minn. |
| Christensen, Ronald | 815 Elm Street N. | Lushanko, Karen | Route No. 3, Hutchinson, Minn. |
| | Hutchinson, Minn. | Lushanko, Larry | Route No. 3, Hutchinson, Minn. |
| Churches, Pattie | Box 57, Nelson, Wis. | Millard, Ronald | 6575 Fridley St. N.E. |
| Cravens, Mary | 3001 W. 74th St. | | Minneapolis, Minn. |
| | Minneapolis, Minn. | Miller, Ann | 2928 Seventh Avenue No., Anoka, Minn. |
| Crofton, James | 405 Parkdale Drive | Miller, Kay | Route No. 1, Kellogg, Minn. |
| | Minneapolis, Minn. | Miller, Rebecca | Route No. 1, Kellogg, Minn. |
| Dahl, Judy | Route No. 5, Box 258-W, Excelsior, Minn. | Mills, Dwight | Route No. 1, Milford, Iowa |
| Dean, Leslie | Box 42, Long Lake, Minn. | Misenko, Lawrence | 1215 13th Ave. N.W. |
| Dean, Richard | Box 42, Long Lake, Minn. | | Rochester, Minn. |
| DeRemer, Sandra | Route No. 2, Mapleton, Minn. | Misenko, Linda | 1215 13th Ave. N.W. |
| Dittberner, Dean | 230 Black Eagle Drive | | Rochester, Minn. |
| | Mankato, Minn. | Moe, Loah | 745 No. Main Street, Hutchinson, Minn. |
| Dockham, Reginald | Route No. 1, Eagle Bend, Minn. | Nelson, Ronald | Box 66, Thief River Falls, Minn. |
| Dybdahl, Sharon | 519 W. Riverside Drive | Newman, Dennis | 395 Van Buren St. |
| | Yankton, So. Dakota | | St. Paul, Minn. |
| Eisele, Edwin | Williams, Minn. | Nielsen, Donna Rae | Route No. 1, Spicer, Minn. |
| Ellington, Diane | Balsam Lake, Wis. | Nielsen, Douglas | Route No. 1, Spicer, Minn. |
| Ellstrom, Howard | Route No. 1, Hutchinson, Minn. | Niven, Marilyn Jean | Route No. 1, Anoka, Minn. |
| Engelrup, Dwight | 745 So. Main Street | Olson, Barbara Jean | Route No. 2, Staples, Minn. |
| | Hutchinson, Minn. | Olson, Judy | 6621 Knoll Street, Minneapolis, Minn. |
| Erickson, Marie | 615 No. Elm Street | Olson, Virginia | 5401 Knox Avenue So. |
| | Hutchinson, Minn. | | Minneapolis, Minn. |
| Fisher, Teo | 1025 Wagon Wheel St., St. Paul, Minn. | Peck, Charles | Box 423, Brainerd, Minn. |
| Flyger, Terry | Hurley, So. Dakota | Petersen, Yvette | Foley, Minn. |
| Forster, Scott | Route No. 2, Cambridge, Minn. | Peterson, Sharon | Route No. 3, Hutchinson, Minn. |
| Garner, Jeanette | Hinckley, Minn. | Pierce, Jacquelyn | Route No. 3, Box 359-A |
| Godfrey, Lyle | Maplewood Academy | | Wayzata, Minn. |
| | Hutchinson, Minn. | Prange, Lynette | 306 Seventh Street N.W. |
| Hagen, Emily | Route No. 1, Gatzke, Minn. | | Faribault, Minn. |
| Hammerback, Joy | 3041 Colfax Avenue So. | Rasmussen, Sandra | 330 No. 137th St. |
| | Minneapolis, Minn. | | Minneapolis, Minn. |
| Hammerback, Judy | 3041 Colfax Avenue So. | Reynolds, Lee | Route No. 1, Bethel, Minn. |
| | Minneapolis, Minn. | Rhodes, Harold | 2354 Locust, Lincoln, Nebraska |
| Hanson, Carole | 6957 Hickory Drive | Roberts, Martha | 59 So. Victoria Avenue |
| | Minneapolis, Minn. | | St. Paul, Minn. |
| Hanson, Cleora | Box 289, Brainerd, Minn. | Roedel, Norma | 705 Third Street S.W. |
| Hass, Joel | 308 Second Ave. N.E., Brainerd, Minn. | | Wadena, Minn. |
| Hedger, Robert | Sebaka, Minn. | Rohlf, Gretchen | 373 Pike Lake, Duluth, Minn. |
| Hooper, Clyde | Maplewood Academy | Rosaasen, Edward | Route No. 3, Hutchinson, Minn. |
| | Hutchinson, Minn. | Rosaasen, Joy | Route No. 3, Hutchinson, Minn. |

| | | | |
|----------------------|--|---------------------|--|
| Rosaasen, Robert | Route No. 3, Hutchinson, Minn. | Thayer, Judith | 6233 Aldrich Avenue So. Minneapolis, Minn. |
| Rosenthal, Lurette | 605 So. Fifth St., Austin, Minn. | Thygeson, June | Gatzke, Minn. |
| Samarza, Lynnelle | 3706 Baillif Place Minneapolis, Minn. | Truax, Allen | Earlville, Illinois |
| Schlenker, Geraldine | Route No. 1, Cambridge, Minn. | Trumble, Joel | Route No. 3, Long Prairie, Minn. |
| Schlenker, Lois | Route No. 1, Cambridge, Minn. | Trumble, Kathleen | Route No. 3, Long Prairie, Minn. |
| Schwab, David | 810 No. Elm Street, Hutchinson, Minn. | Tucker, Janet | Route No. 2, Box 65, Wayzata, Minn. |
| Shaw, Lorraine | Pemberton, Minn. | Tucker, Jayne | Route No. 2, Box 65, Wayzata, Minn. |
| Shamberg, Donna | Box 511, Walker, Minn. | Tucker, Jean | Route No. 2, Box 65, Wayzata, Minn. |
| Sherwood, Donna | Maplewood Academy Hutchinson, Minn. | Van Raden, Lily | Route No. 1, Fertile, Minn. |
| Shortridge, Virginia | 423 E. Lake Street Wayzata, Minn. | Waterhouse, Bonnie | Route No. 2, Box 260 Wayzata, Minn. |
| Shultz, Walter | 303 So. 14th Street, Denison, Iowa | Watson, Lynda | Route No. 3, Box 114 Grand Rapids, Minn. |
| Sievert, Beverly | 8519 Haeg Circle Minneapolis, Minn. | Ward, Eugene | Wadena Motor Court, Wadena, Minn. |
| Simpson, Daniel | 713 Blue Earth Street Mankato, Minn. | Westerman, Donna | 3306 No. Seventh Avenue Sioux Falls, So. Dakota |
| Spangler, Jean | 408 America Avenue, Bemidji, Minn. | Wiltse, Charlene | 715 So. Second Street Wahpeton, No. Dakota |
| Spangler, John | 408 America Avenue, Bemidji, Minn. | Wold, Charles | 1018 America Avenue, Bemidji, Minn. |
| Starks, Edna | Canton, Minn. | Wold, Gary | 1018 America Avenue, Bemidji, Minn. |
| Swanson, Dorothy | 1211 E. Kemp Avenue Watertown, So. Dakota | Wold, Wayne | 1018 America Avenue, Bemidji, Minn. |
| Swanson, Kristine | Route No. 3, Box 259 Wayzata, Minn. | Wright, Kathryn | 11934 Woodbine S.W. Coon Rapids, Minn. |
| Swatek, Bernice | Route No. 2, Box 21, Station B Superior, Wis. | Zuberbier, Mary Lou | Route No. 1, Spencer, Iowa |
| Swenson, Frederick | 205 West Vassa Avenue Fergus Falls, Minn. | Fish, David | 3155 14th Ave. So., Minneapolis, Minn. |
| | | Patch, Joy | Box 1171, Escondido, Calif. |





KANSAS CITY 6, MISSOURI
TORONTO 1, ONTARIO

LITHO. IN U.S.A. BY YEARBOOK HOUSE

