

The background is a solid red color. Overlaid on this are several white geometric elements. A large, thick white 'V' shape is positioned on the left side, pointing downwards. To its right, there is a smaller white trapezoidal shape at the top. Below that, a white triangle points downwards. On the right side, a long, thin white line extends from the top towards the middle. At the bottom, another white 'V' shape is partially visible, pointing upwards. The text is placed within these geometric spaces.

'63

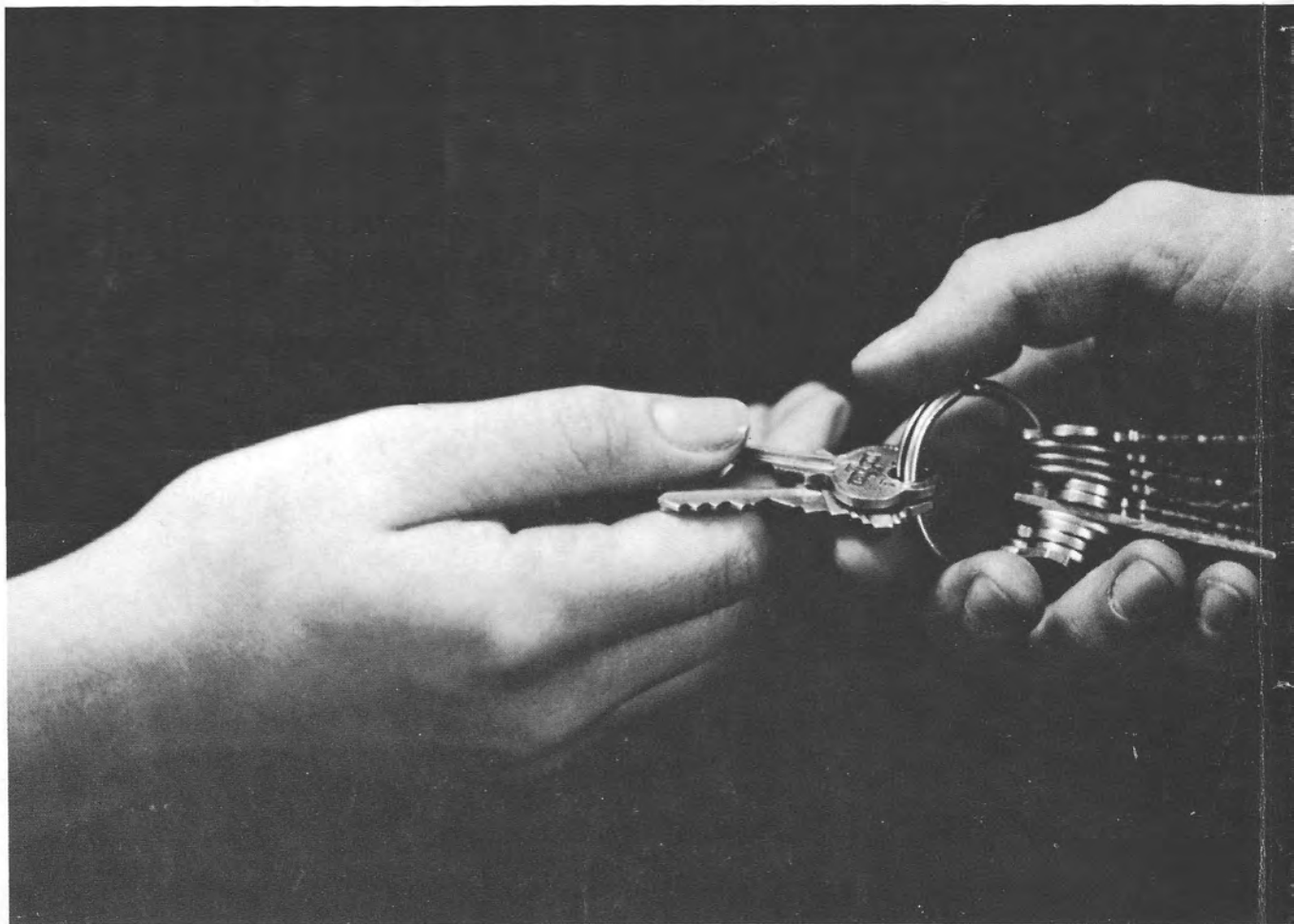
MAPLE LOG





1963
MAPLE
LOG

PUBLISHED BY:
ASSOCIATED STUDENT BODY
MAPLEWOOD ACADEMY
HUTCHINSON, MINNESOTA





FOREWORD

Keys! There are millions upon millions of keys in the world, keys of all shapes, sizes, and descriptions, keys to open the door of the most elaborate palace, or the most humble cottage. But, most important are the keys to the future. Every day students at Maplewood Academy are using these keys to their futures. Their classes, work, spare-time activities, all these are keys to each person's future. In this annual, we are endeavoring to let you examine the key ring of life at Maplewood. As we look back over the year, we see many unforgettable good times — the picnics, trips, campaigns, banquets, parties — that are so much a part of life here. We also see disappointments, an occasional grade that is not quite up to par, a misunderstanding with a classmate or teacher, or perhaps missing out on a good entertainment. These disappointments seem big at first, but the happy spirit of the school soon takes over, and they are forgotten. Many lifelong friendships are formed here; some students will discover their life partners while in attendance. Seniors can look back upon many things, while Freshmen have many things to look forward to. The students graduate, but what will they do with their lives? The decisions they make concerning their futures must be prompted by the Master Key, the Key of Heaven. Keeping this idea in mind, the staff of the 1963 Maple Log wishes to challenge each student to use this Master Key in the lock of his decisions.



SCHOOL SONG

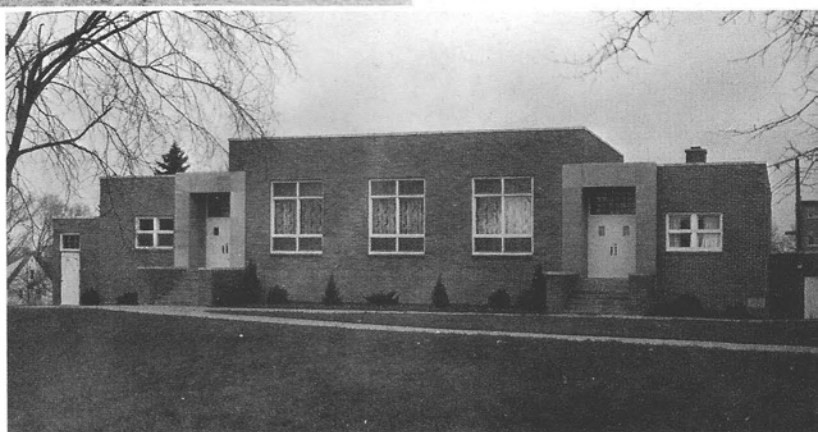
We're loyal to you, Maplewood,
To the white and the blue we'll be true,
With banner in hand,
It's the best in the land,
For you are really grand, Maplewood, RAH! RAH!
From these halls we travel along,
And singing a victory song,
Oh, down through the years we saunter,
All the while growing fonder
Of dear old Maplewood.

Hutchinson Seventh-day Adventist Church



New Girls' Dormitory

Music and Home Economics Building



Gymnasium

Academy Farm



CONTENTS

ACTIVITIES



ORGANIZATIONS



SPIRITUAL



FACULTY



GRADUATES



UNDERGRADUATES



INDUSTRY



MAIN STREET





Elder Noble is shown with his wife and their children, Donovan, David, and Barbara.

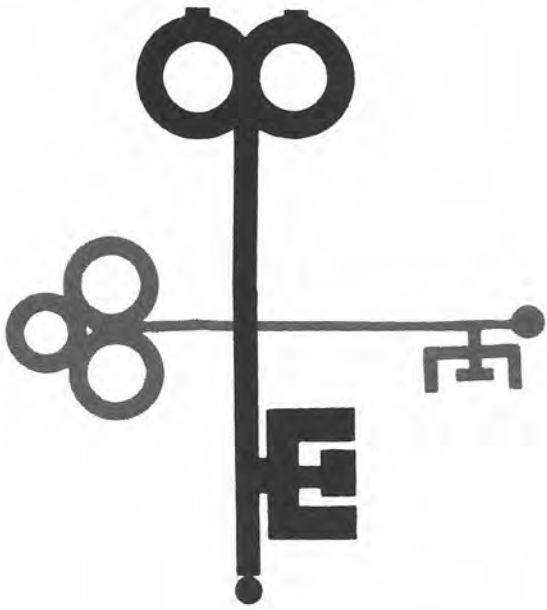
IN DEDICATION

Along with Elder Noble's position as treasurer of Maplewood, comes the responsibility of teaching the American History class. In this picture he is administering a test.





To Elder Noble, who has come through the doors at dawn and often stayed until long after dark, putting in many hours of overtime for the benefit of the students and the school, we, the staff and students, dedicate this 1963 Maple Log.



ACTIVITIES

The picture you see here depicts a phase of life at Maplewood Academy that is enjoyed most by the majority of the students. Joan Bromme, anticipating an enjoyable evening with Terry Guy, pins a boutonniere on his lapel. This scene portrays the formal type of entertainment. In addition to this, there are class parties, lyceums, musical programs, sports, special programs, such as the ASB Halloween party, and many other forms of entertainment to give the student relaxation and an opportunity to develop socially.





GLENN'S ORBITAL SPACE FLIGHT

Astronaut John H. Glenn, Jr. waves his hand as he walks from his living quarters to a transfer van at Cape Canaveral, Florida. The van took him to the launching pad where he started his orbital flight.



EVENTS OF THE YEAR

The events here portrayed are but a few of those signs of Christ's 2nd coming that have occurred in the past year. The orbital space flights; these are a good example of "Knowledge shall be increased." The Cuban crisis; this suggests the sign "Wars and rumors of wars." These happenings, and many others, continually remind us of the fact that soon, very soon, we shall see in the heavens the King of Kings in all His glory.



CUBAN CRISIS

The U.S.S. Destroyer *Vesole* pulls along side of the Soviet Freighter *Polzunov* for a check on cargo carried in the Atlantic Ocean. Note one of missile-like objects partially uncovered on the freighter.

GENERAL CONFERENCE SESSION

Elder C. H. Lauda, the president of the Minnesota Conference of Seventh-day Adventists, observes a South American devil worshipper's headdress. The man holding it is W. E. Jamerson, home missionary secretary for the Inca Union. He is dressed in the grotesque garb of a Bolivian devil dancer.



SEATTLE WORLD'S FAIR

A home of the future is depicted here as consisting of interlocking plywood circles and ovals. The curve exterior is brightened by a series of built-in flood-lamps. Between the Conical Skylights is seen the distant Space Needle and sometimes even the moon decorates the scene . . . G.E. home lighting authorities say lighting equipment used here equals that used by 100 average modern homes of the same size.





LYCEUMS

Gary McKellip assists Dr. DeForest, who presented a lyceum about liquid air.

Mrs. Eileen Stransky presented a concert of light and classical music for chapel one morning.



Chuck Bindner, a professional trainer of predatory birds, told us that it takes about 6 months to properly train a bird of prey.



The Maplewood Choir, performing Handel's Messiah in this picture, pleased the audience with the first performance here of this work in several years.



The Maplewood Choraliers sang several numbers at the Maple Leaf banquet, which was held in the Hutchinson High School Cafeteria.

ACTIVITIES

The Maplewood Academy Band presented several concerts throughout the year.





This is "Boot Hill Cemetery," which contributed much to the spookiness of the A.S.B. Hal-
lowe'en party.

Larry Lushanko has a determined look on his face as he attempts to make it "over the top." The high jump was one of the many activities at the A.S.B. picnic.



Barb Roderick is lucky she isn't swimming in Lake Minnetonka, for this picture was taken in the middle of the winter. The Boys' and Girls' clubs rented the Hutchinson High School swimming pool several times this year.



One of the many activities of the A.S.B. during the year is the choosing each month of the courtesy royalty.



Kermit Netteburg and Dick Hebbel exchange satisfied looks as they realize that the boys won the Maple Leaf campaign.

The girls' club presented a benefit program in the form of a Japanese supper.





Henry Zollbrecht, Newton Zanes, Jim Rosenthal, Ron Nelson, and Kermit Netteburg are shown at radio station KDUZ. They each presented a sermonette during a week of "morning devotions" programs.



Darlene Trefz, Newton Zanes, Emily Hagen, and Merrill Barnhart prepare to leave on an off-campus date.



Students who received 15 or more subs during the Maple Leaf campaign had the privilege of going to the ski picnic at Powder Ridge.



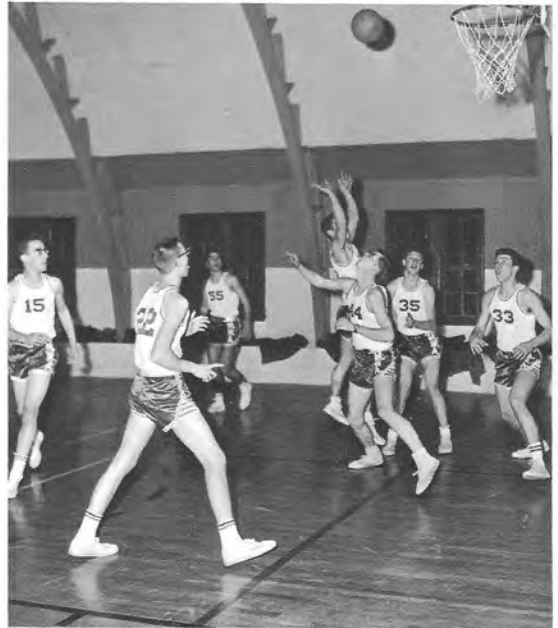
Darlene Trefz, Newton Zanes, Yvette Petersen, Roger Bowie, Pat Horst, and Grant Nelson enjoy an evening of skating in the gymnasium.



THE MAPLEWOOD ALL-STARS: Bob Rosaasen, Guard; Ron Nelson, Guard; Pat Logan, Forward; Dick Hebbel, Forward; Dave Lighthall, Center; Dave Albers, Center; Merle Peterson, Forward; Chuck Nash, Guard.



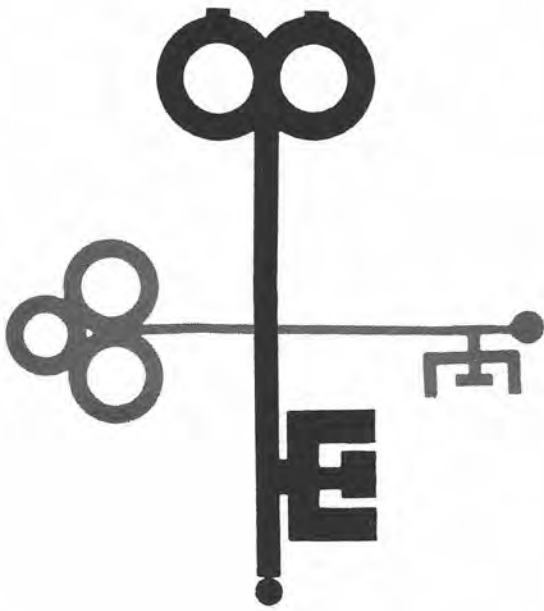
The Physical Education class enjoys a rousing volleyball game.



All eyes are on the ball at a crucial point in the game.



Richard Hancock executes a nice flip from the new mini-tramp that was purchased with funds from last year's candy campaign.



ORGANIZATIONS

There are many organizations at Maplewood Academy. The one depicted in this photo is the Associated Student Body. We see the ASB President, Linda Larson, displaying a sweat shirt with the MWA insignia emblazoned on its front. These sweat shirts were sold to the students through the ASB. Other organizations include: The Knights of East Hall and the Crescit Eundo, The Maple Log and Maple Leaf; Band, Choir, and Choraliers, who presented programs and took several trips throughout the year; and Orchestra, which is new at MWA this year.





1st Semester Officers: Darlene Trefz, Secretary; Ron Nelson, Vice-president; Sandy Bitzer, Treasurer; Linda Larson, President; Tom Murphy, Pastor; Pat Logan, Sergeant-at-arms.



Pat Horst steps out of the voting booth on election day. Darlene Trefz is acting as voting clerk.

As this picture shows, the chapel was rather cluttered up at election time. Candidates and their managers were allowed to put up campaign literature the day before the election. Since the literature could be put up anywhere, students were surprised by even a special flag on the flagpole.

ASSOCIATED STUDENT BODY





The Associated Student Body sponsored a candy campaign this year. The picture shows Newton Zanes and Barb Roderick selling candy to Mrs. Anderson.



2nd Semester Officers: Ray Blue, Sponsor; Kathy Swanson, Treasurer; Alvin Hensel, Pastor; Sue Prosser, Secretary; Terry Guy, Sergeant-at-arms; Dick Hebbel, President; Barb Roderick, Vice-president; Mr. McMillen, Sponsor.



Sandra Julius, Sponsor; Sue Prosser, Assistant Editor; Kathy Swanson, Associate Editor; Merrill Barnhart, Literary Editor



Gary Waterhouse, Typist; Yvette Petersen, Roster Editor.

MAPLE LOG

Darlene Trefz and Grant Nelson; Snapshot Editors



Shirley Ritz, Editor-in-Chief

Dick Hebbel, Advertising Manager; Ivan Groulik, Sponsor; Kermit Netteburg, Business Manager



MAPLE LEAF

Mr. Holmes, Sponsor; Jerry Rosaasen, Assistant Circulation Manager; Karin Neergaard, Assistant Editor; Alvin Hensel, Associate Editor; Dave Light-hall, Circulation Manager; Brenda Christensen, Assistant Editor.



Terry Guy, Assistant Photographic Editor;
Charlene Wiltse, Photographic Editor.



Jim Rosenthal, Editor-in-Chief

Typists: Judy Burgeson, Sue Prosser, Sue Sather, Kathy Frye, Joan Bromme.



Proofreaders: Timo Riippa, Pat Horst, Darlene Trefz, Jim Wasemiller.
Miss Bloom, Sponsor.





1st Semester Officers: Emily Hagen, Pianist; Sue Prosser, Treasurer; Shirley Ritz, Spiritual Vice-president; Darlene Hammerback, President; Miss Bentley, Sponsor; Charlene Wiltse, Vice-president; Janice Rosenthal, Secretary; Nilan Brown, Chorister.

2nd Semester Officers: Sandy Bitzer, Pianist; Leta Hensel, Treasurer; Sue Sather, Spiritual Vice-President; Karin Neergaard, President; Joan Bromme, Vice-president; Kathy Swanson, Secretary; Judy Burgeson, Chorister.

CRESCIT EUNDO



The girls enjoy a rousing basketball game as Mr. Uhrig referees.

These girls are checking in shoes at the girls' benefit program. The girls' Club presented a program and supper with a Japanese theme.



1st Semester Officers: Grant Nelson, Secretary-Treasurer; Kermit Netteburg, Pastor; Newton Zanes, Vice-president; Jim Rosenthal, President; Tom Murphy, Sergeant-at-arms; Mr. Uhrig, Sponsor; Merrill Barnhart, Pianist; Bob Rosaasen, Social Vice-president and Chorister.

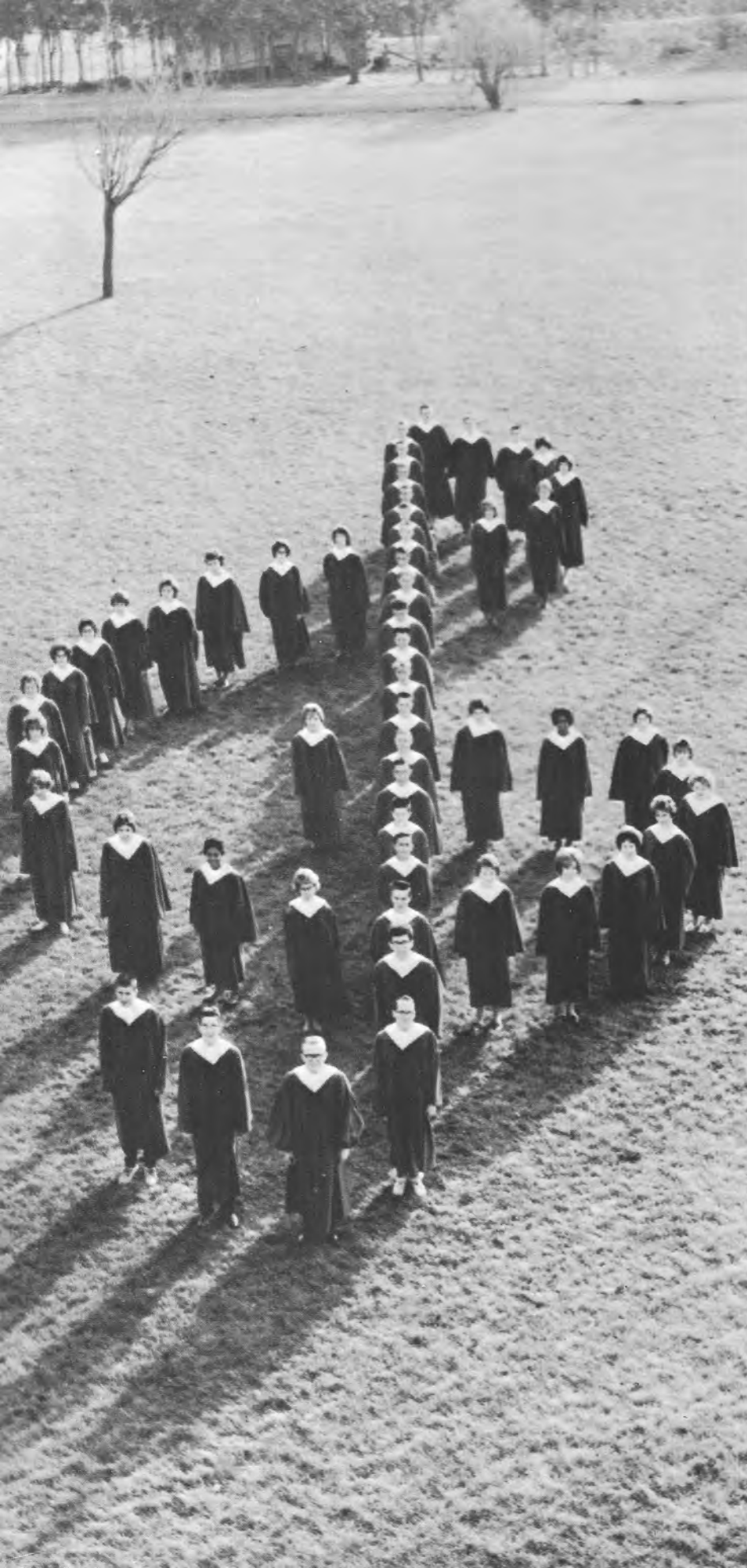


KNIGHTS OF EAST HALL

2nd Semester Officers: Alvin Hensel, Secretary-Treasurer; Bob Rosaasen, Chorister; Ron Nelson, Vice-president; Henry Zollbrecht, Pastor; Merrill Barnhart, Social Vice-president and Pianist; Timo Riippa, President; Dave Lighthall, Sergeant-at-arms.



Mr. and Mrs. Uhrig prepared this party for the boys just before Christmas vacation. Everyone thoroughly enjoyed everything from the "Mapleburgers" to the ice-cream for dessert.



CHOIR

SOPRANO

Dorothy Benjaminsen
Coleen Bosanco
Ruby Boyington
Joan Bromme
Nancy Brown
Sandra Burr
Patty Fankhanel
Lila Hensel
Judy Johnson
Barbara Larsen
Barbara Lingle
Judy Nelson
Henrietta Opp
Janice Rosenthal
Janet Ruths
Linda Spangler

ALTO

Maxine Anderson
Heather Beavon
Martha Bosanco
Nilan Brown
Sherry Burgeson
Linda Helland
Sharon Paladino
Barbara Roderick
Susan Sather
Elaine Spangler
Kathleen Swanson
Darlene Trefz
Roi-Ann Vail
Merry Weisner

TENOR

Gary Barnhart
Robert Chilson
Roger Dickhaut
Keith Ellstrom
Gerald Hanson
Richard Lamon
Glenn Sackett.

BASS

Ted Anderson
Steven Bellach
Richard Hancock
Richard Hebbel
Jon Hieb
James Johnson
Roger Lonnstrom
Thomas Misenko
Thomas Murphy
Arlee Nelson
James Olson
Duane Perekrestenko
Kenneth Pierson
Curtis Wiltse
Newton Zanes
Henry Zollbrecht

ACCOMPANIST: Merrill Barnhart



CHORALIERS

BACK ROW: Terry Guy, Linda Larson, James Wasemiller, Brenda Christensen, David Lighthall, David Albers, Shirley Ritz, James Rosenthal, Karin Neergaard (Accompanist), Charles Nash. *FRONT ROW:* Lynn Wixson, Ronald Nelson, Judy Burgeson, Tim Pederson, Linda Bitzer, Merrill Barnhart, Katherine Frye, Robert Rosaasen, Darlene Hammerback.



GLENN WHEELER
Band, Choir, Choraliers



CONCERT BAND

FLUTE:

Kathy Frye
Shirley Ritz
Janet Ruths
Lynn Wixson

CLARINET:

Martha Bosanco
David Burghart
David Johnson
Gary McKellip
Karin Neergaard
Kermit Netteburg
Sue Prosser
Barbara Roderick
Valerie Tackett
Gary Waterhouse

SAXOPHONE:

Sandra Bellach
Patty Fankhanel
Patricia Horst
Dan Johnson

CORNET:

David Albers
Brenda Christensen
Ronald DeRemer
Kenneth Ellstrom
Terry Guy
Douglas Hamilton
Richard Hancock
Sandra Horst
Patrick Logan
LeRoy Wood

TROMBONE:

Roger Dickhaut
George Harlan
Loah Moe
Robert Rosaasen
Glenn Sackett
Kathy Swanson
Terry Verlo

HORN:

Howard Ellstrom
Sandra Julius
Charlene Wiltse

TUBA:

David Lighthall

PERCUSSION:

Merrill Barnhart
Emily Hagen
Elwin Klein
Sandra Pierson



ORCHESTRA

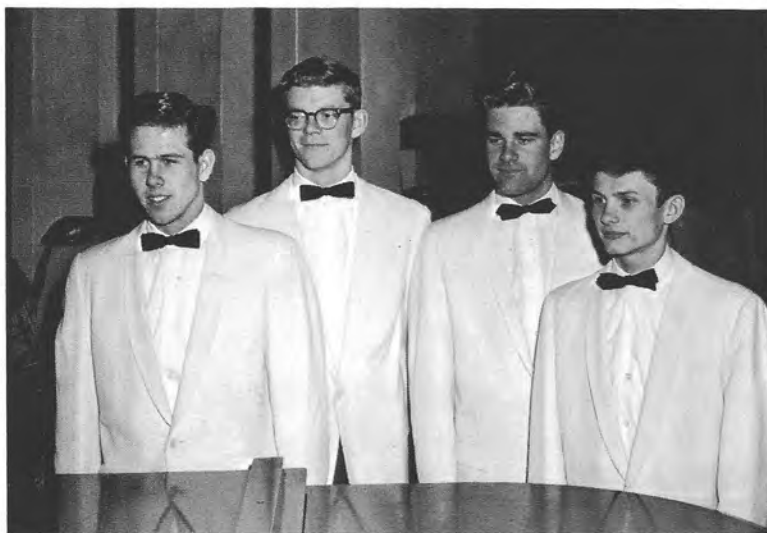
BRASS AND PERCUSSION ENSEMBLE: Brenda Christensen, Dave Albers, Merrill Barnhart, Dave Lighthall, Bob Rosaasen, Charlene Wiltse, and Howard Ellstrom.





VOCAL GROUPS

The Girls' Trio
Linda Larson, Brenda Christensen, Lynn Wixson



The Senior Quartet
Ronald Nelson, David Lighthall, James Rosenthal, Robert Rosaasen.

The Sophomore Girls' Trio
Patty Fankhanel, Linda Bitzer, Judy Burgeson.



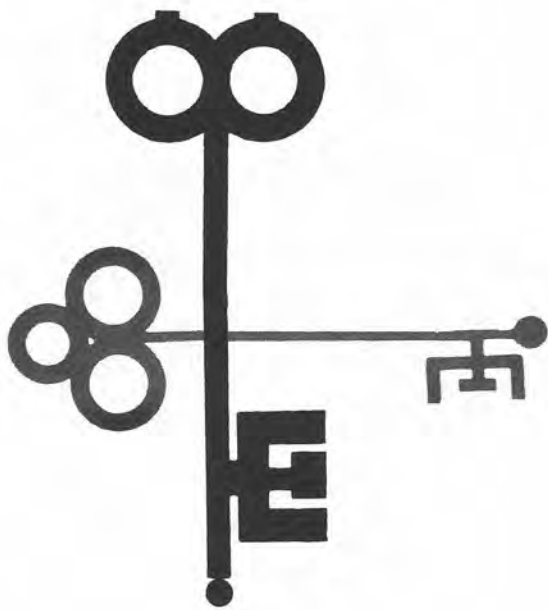
CLARINET QUARTET: Merrill Barnhart, accompanist for wind groups; Kermit Netteburg, Karin Neergaard, Barb Roderick, Gary Waterhouse.



FLUTE TRIO: Kathy Frye, Lynn Wixson, Shirley Ritz

TRUMPET TRIO: Dave Albers, Brenda Christensen, Terry Guy.





RELIGIOUS

"Prayer is the key in the hand of faith to unlock heaven's storehouse." Here we see Charlene Wiltse and Darlene Trefz using this key before retiring for the night. Much emphasis is placed on the spiritual aspect of life at MWA. In addition to the Bible classes, the students take part in the many religious services that are held on the weekends. The Crusaders is an organization in which students prepare sermonettes and then deliver them to our congregations throughout the state. One can look back on the quietness of the Friday night vesper hour. This type of religious service is what differentiates between the academy and a public high school. The prayerful attitude of the students, the peace of the new Sabbath day; these, and more, combine to give the academy that spiritual atmosphere which is its very life.





ERVIN L. SORENSON

WEEKS OF PRAYER

Our religious life was supplemented and enhanced by the Autumn and Spring Weeks of Prayer. Chapel time and evening worship time every day during these weeks found the students assembled in the chapel to gain a spiritual blessing. Our speaker for the Autumn Week of Prayer was Elder Ervin Sorenson, who is the president of the Southeast India Union. Elder Sorenson, besides presenting interesting talks, also gave us travelogues about India. The speaker for the Spring Week of Prayer was Elder Walter A. Howe, the MV and Educational secretary of the Central Union Conference. His inspiring sermons were a source of enjoyment and spiritual guidance to everyone.

WALTER A. HOWE



1st Semester Officers: Tom Murphy and Pat Horst, Leaders; Ron DeRamer and Janice Rosenthal, Secretaries; Paul Zummach, Sponsor.



SABBATH SCHOOL



"The Sabbath School is the Church at study" is a quotation that is familiar to all of us. Students are given the opportunity to participate in the Sabbath School as leaders, secretaries, class teachers, and others, as well as giving the mission reading or furnishing the special music from time to time.

2nd Semester Officers: Curtis Wiltse and Sandy Felton, Secretaries; Sue Sather, Leader; Miss Julius, Sponsor; Larry Reed, Leader.

A Sabbath School Class listens attentively as Henry Zollbrecht teaches the Sabbath School lesson.



MISSIONARY VOLUNTEER SOCIETY

The young people's organization on the campus is the Missionary Volunteer Society. The sponsors, Elder Prest and Miss Bentley, strive to make each program an interesting spiritual experience. Second semester the sponsors and officers have instituted a weekly Bible quiz to stimulate interest in the "Bible year." Truly the MV programs are a fitting climax to each Sabbath Day's blessing.



The MV society is shown presenting a skit depicting the trial of the Faith for Today worker who was arrested for working on Sunday.



First Semester Officers Miss Bentley, Sponsor; Newton Zanes and Charlene Wiltse, Leaders; Karin Neergaard and Gary Waterhouse, Secretaries; Elder Prest, Sponsor.



2nd Semester Officers Elder Prest, Sponsor; Grant Nelson, Secretary; Yvette Petersen and Kenny Pierson, Leaders; Miss Bentley, Sponsor.

CRUSADERS

Heather Beavon, one of the members of the "Life of Christ" group, delivers her sermonette on the Beatitudes.



Valerie Tackett, Pianist; Elder Prest, Sponsor; Kermit Netteburg, President; Henry Zollbrecht, Vice-president; Alvin Hensel, Secretary-Treasurer.

The Crusaders is an organization devoted to preparing programs of sermonettes and music, and then taking these programs to the various churches throughout Minnesota. About 15 students are participating in Crusaders this year. The Choraliers and Crusaders go to different churches so that a representative group from MWA can visit each church at least once during the year.

A Crusader group prepares to leave on one of its trips.





OFFICERS: Lila Hensel, Secretary; Henrietta Opp, Treasurer and Business Manager; Elder Prest, Sponsor; Terry Guy, President.

TEMPERANCE



Lois Kupcho, Virgil Larson, and Henrietta Opp are shown working on posters.



Heather Beavon, Janet Ruths and Sandy Belach were among the contestants for the oratorical contest.



This picture portrays Linda Larson, Darlene Trefz, and Janice Rosenthal working on essays for the contest.



After the Friday night vespers each week, when the weather is nice, the students assemble on front campus for prayer bands. In case of inclement weather and during the winter, they meet in the various classrooms.



Mr. Anderson presenting the prize money to 1st prize winners Alvin and Leta Hensel at the Bible Quiz.

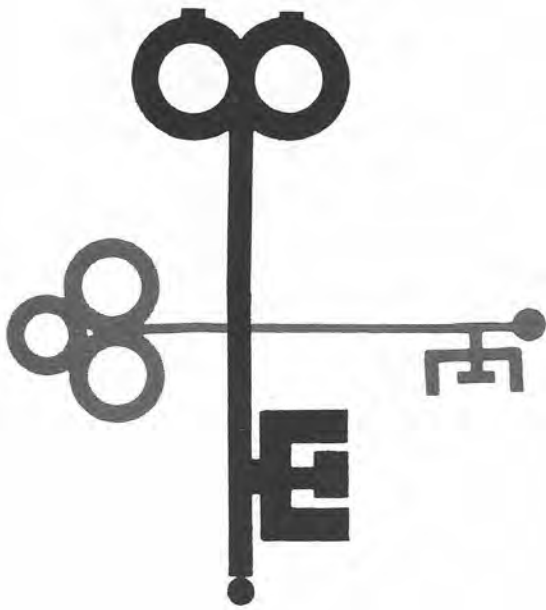
RELIGIOUS ACTIVITIES

Darlene Trefz, Cheryl Lund, Richard Hancock, Newton Zanes, Merry Weisner, Sandy Horst, LeRoy Wood, and Jon Olson leave the gymnasium to go on a singing band. Each Sabbath singing bands go to the various rest homes around Hutchinson and spread cheer and courage to the older folks.



Eight teams participated in the Bible Quiz held at Maplewood.





FACULTY

WHOOSH!! Mr. McMillen, our Chemistry teacher, has just lit off a mixture of potassium chlorate, sugar, and sulphuric acid. Mr. McMillen is one of the faculty members at MWA. There are many teaching jobs to be filled, and this year Maplewood's staff is one of the best it has had. In addition to the teachers, the staff includes the vocational department managers. Most academy teachers have had opportunities to obtain better jobs with higher pay, but they have turned these down in deference to the teaching jobs that they now hold. One may ask almost any teacher and he will say that he is not in the teaching profession for the money involved, but for the opportunity to serve God and prepare the young people of the country to serve Him.





LYLE C. ANDERSON

PRINCIPAL

PRINCIPAL'S MESSAGE

Progress of time is advancing. In keeping with the objectives of our day, progress should advance and march forward in every phase of our school life. Our teachers and staff members are determined to challenge our young people, in raising their sights on a higher goal of their physical, spiritual, and mental visions. The world today is providing peripheral training that includes the heart and soul.

Jesus said, "Seek ye first the kingdom of God, and his righteousness, and all these things shall be added unto you."

The backward glance over the progress in the Christian education of our youth serves to lengthen our perspective and sharpen our conception of the better things to come. In the youth we see the vision, courage, and faith necessary for the finishing of the work of God on earth.

Maplewood is dedicated to the principles of true education — the harmonious development of the physical, intellectual, and moral powers in the youth. But, the real achievements of an academy are measured in terms of the quantity and quality of intellectual and spiritual growth which takes place in the students.

As the dark night of this world nears its close, may Maplewood continue that work of character building which is destined to restore in each student the image of his maker.

A handwritten signature in black ink, reading "Lyle C. Auduson". The signature is written in a cursive style with a large, sweeping initial "L".



LYLE C. ANDERSON
Principal
Business Manager



MRS. LYNETTE ANDERSON
Secretary to the Principal



ALICE BENTLEY
Dean of Girls
Office Practice



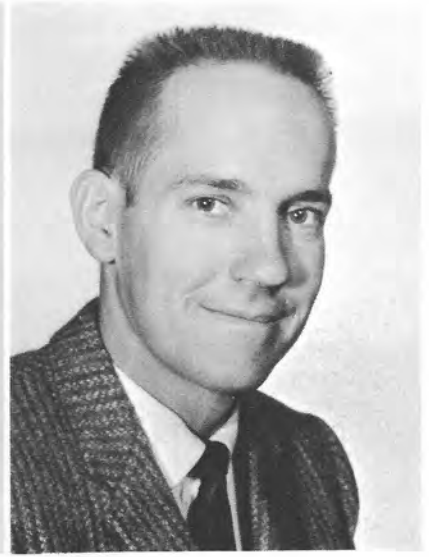
Mr. Anderson at home with his wife and their children, Ted, Kaylene, Joni, Kristi, and Lynn. Although this is Mr. Anderson's 3rd year at MWA, this is his 2nd year as principal. His first year here he was head of the music department.

This is Miss Bentley's first year at Maplewood Academy. She came to us from Indiana Academy, where she was the Dean of Girls and taught Typing and Shorthand. She has also taught church school in the Far Eastern Division.





CLEO BLOOM
Home Economics
Typing
Shorthand



RAY BLUE
Mathematics
Physics



This is Miss Bloom's first year of teaching, for she just graduated from college last year. She does a very efficient job of teaching home economics and secretarial science. Here we see her enjoying her favorite pastime, reading.

If one should happen to walk by the science room and see a man very busily working on a scientific experiment, this man would very likely be Mr. Blue, for he is our math and physics teacher. Here he is shown with his wife and their two children, Kristie and Kelly.





CECIL CONQUEST, SR.
Spanish I and II



JAMES CURRY
Farm Manager
Vocational Agriculture

Mr. Curry, besides being the farm manager, also teaches agriculture. This is the first time that this subject has been offered for a number of years. Here Mr. Curry is shown with his wife and their children, Bryan and Judy.



Mr. and Mrs. Conquest have both taught school for many years. In addition to teaching at the academy, Mr. Conquest has also taught church school. Mrs. Conquest is one of the present church school teachers. In this picture, we see them leaving their home for an evening out.



CHARLES E. FELTON
Church Pastor
Guidance Director



MRS. DOROTHY GALBRAITH
Piano



Elder Felton, in addition to being the pastor of the Hutchinson SDA Church, is the head of the guidance department at MWA. With this position also comes the responsibility of teaching the Youth Guidance class. In this picture, Elder & Mrs. Felton and their four children, Charla, Sandy, Glenda, and Ronnie, are looking through a devotional book. The Felton family enjoys camping as their favorite pastime.

Mrs. Galbraith is one of the piano teachers at MWA. This is the third year she has been with us. Here she is shown with her husband and their two children, Cheryl and Mike. The State of Minnesota employs Mr. Galbraith as one of its bee inspectors.





IVAN GROULIK
Bookbindery Manager



DEAN HOLMES
English I,II,III
General Mathematics



MRS. DOROTHY HOLMES
English IV
Organ
Piano



Mr. Groulik is the manager of the Maplewood Bookbindery. Many books pass through the bindery each day, and it is Mr. Groulik's job to see that they're done right. Here he is pictured at home with his wife and their children, Steven, Lynette, and Roma.

This is Mr. and Mrs. Holmes' second year at MWA. Mr. Holmes teaches English I,II, and III, and General Math and Mrs. Holmes, besides teaching English IV, teaches organ and piano. Here they are shown at home with their children, Larry, Jean, Cheryl, Sandy, and Jimmy.





SANDRA JULIUS
Accountant
Bookkeeping



GLADYS LARSON
Director of Foods

Mrs. Larson is now in her third year at MWA. As the Director of Foods, she has done a very efficient job of preparing our meals. Here we see her enjoying one of her favorite pastimes, knitting, as her daughter Linda, a senior student, looks on.

This is Miss Julius' second year at MWA. Along with her responsibilities as accountant, she teaches the bookkeeping class. Here she is shown working at her sewing machine, a pastime which she enjoys very much.





GILBERT G. McMULLEN
Assistant Principal
Registrar
Science



MRS. PHYLLIS McMULLEN
School Nurse



JOEL N. NOBLE
Assistant Business Manager
Treasurer
American History

This is Elder Noble's 5th year at MWA. In addition to being the treasurer of the school, he has taught Bible Doctrines, and this year is teaching American History. Here he is shown with his wife and their 3 children, David, Donovan, and Barbara. When he isn't busy with his work at the school, he enjoys playing ping-pong. Aside from her busy home schedule, Mrs. Noble works part-time in the Maplewood Craftshop office.



Here we see Mr. & Mrs. McMullen enjoying some relaxation with their son, Ricky. Mr. McMullen, besides being the registrar and assistant principal, is one of our science teachers, and Mrs. McMullen is the school nurse. As you can see, Mrs. McMullen enjoys playing the piano. Mr. McMullen, in his offtime, enjoys hunting as a pastime.



DAVID J. PREST
Bible



PHILIP W. SCHWAB
Maintenance Director



This is Elder Prest's first year at MWA. He is the teacher of the Old Testament, New Testament, and Bible Doctrines classes. Here he is shown with his wife and their two children, David and Sandra.

When anything needs to be fixed at MWA, all one has to do is call on Mr. Schwab, for he is our "Mr. Fixit." He has been our maintenance director for six years, even though he has lived in Hutchinson longer than that. After a hard day's work, he enjoys relaxing at home.





JOHN UHRIG
Dean of Boys
World History
Physical Education



GLENN WHEELER
Head of Music Department

Mr. Wheeler is the head of our music department. This is his first year at MWA. He came to us from Iowa State University, where he was doing graduate work. Here we see him with his wife and their two children, Debbie and Gregg.



Mr. Uhrig is another new faculty member at MWA. He is our dean of boys. Previous to this year, he was the boys' dean at Jefferson Rural Academy in Texas. Here he is pictured with his wife and their two children, Donny and Johnny.



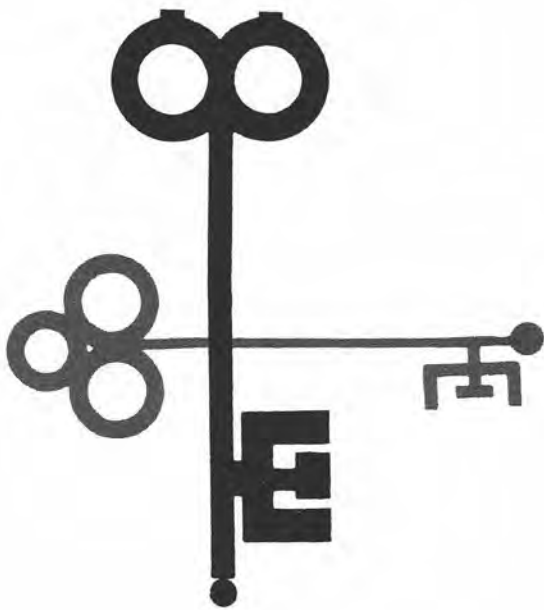
PAUL ZUMMACH
Craftshop Manager

Mr. Zummach is the manager of our efficient craftshop. This is his first year as manager, although he has been assistant manager in years previous to this. Here he is pictured with his wife and their two children, Kathy and Karen. Kathy is a little young yet for Scrabble, but the others are thoroughly enjoying it.

BOARD OF DIRECTORS

C. H. Lauda — Chairman
Lyle C. Anderson — Secretary

G. D. Bras	Jack Guy, M.D.	R. G. Mote
Clifford Christensen	H. E. Haas	L. H. Netteburg
J. L. Dittberner	M. C. Horn	J. N. Noble
V. W. Emmerson	Arnold Jacobson	Harry Petersen
C. E. Felton	R. G. Lucht	O. J. Ritz



GRADUATES

Graduation! When one thinks of graduation, there may be many tears shed (as this picture of Sandy Horst, Pat Horst and Bob Rosaasen tells us), there will be quite a bit of money spent, but, best of all, there will be many memories to take with oneself. The class parties; the senior trip to Union College; these are a couple of the many activities of the senior class throughout this year. For most of the students, it's been a long, hard pull, but they've finally made it. The Maple Log wishes to extend its congratulations to the seniors of 1963, and also wishes them much success in the future.





SENIOR OFFICERS

RONALD NELSON	President
CHARLENE WILTSE	Vice-President
SHIRLEY RITZ	Secretary
PATRICIA HORST	Treasurer
ROBERT ROSAASEN	Pastor
NEWTON ZANES	Sergeant-at-Arms
RAY BLUE	Sponsor
JOHN UHRIG	Sponsor

AIM

Not The Evening But The Dawn

MOTTO

Christ Our Morning Star

COLORS

Red and White

FLOWER

Red Sweetheart Rose

VALEDICTORIAN
James Rosenthal
3.969



SALUTATORIAN
Patricia Horst
3.871



HONOR STUDENTS

Kermit Netteburg



Timo Riippa



Merrill Barnhart



Janet Ruths



Henry Zollbrecht



Ronald DeRemer



Yvette Petersen



Linda Larson



Shirley Ritz



Charlene Wiltse



Linda Farbo



RONALD DWAIN NELSON
President
Thief River Falls, Minn.

CHARLENE RAE WILTSE
Vice-President
Wahpeton, North Dakota



RON is always in action, especially when it comes to sports. Since he came here his freshman year, he has been ASB vice-president and boys' club president. We wish him success as he fulfills his ambition to become a minister.

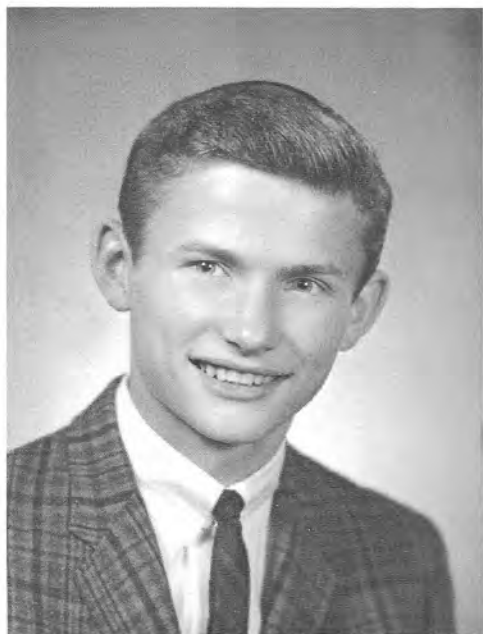
During his four years at MWA BOB has been kept from moments of boredom by his extracurricular activities. He has been president of his class his sophomore year and social vice-president of boys' club. He enjoys all types of sports, especially basketball. For his future BOB plans to be a physics teacher.

"Fun-loving" is characteristic of her ready wit and laugh. CHARLENE has held office in both her class and in girls' club. She enjoys the out of doors, especially skiing and swimming. She will be successful in her chosen work of nursing.

NEWT, good natured and humorous, has been with us for two and one-half years. Since his arrival here, he has been liked by all. This has been shown by the many offices he has held. His ability of leadership will be an asset to him in his determination to become a minister.

ROBERT GLEN ROSAASEN
Pastor
Renville, Minnesota

NEWTON HARRISON ZANES
Sergeant-at-Arms
Las Vegas, Nevada





SHIRLEY JEAN RITZ
Secretary
Minneapolis, Minnesota

PATRICIA LOUISE HORST
Treasurer
Rochester, Minnesota

Seventeen years ago, SHIRLEY was born in Galt, Ontario. At the present time she claims Minneapolis as her home. She has been here for two years, and in that time, has been very active in music groups, the girls' club, and the Maple Log staff. Her ambition is to be a nurse.

MAXINE has spent three and one-half years at Maplewood. During her stay here she has taken an active part in Crusaders and has been an MV leader. With her experience gained by working in the craftshop office, she will be better prepared to reach her goal, to be a secretary.

This efficient office worker came to MWA three years ago. PAT has served as president of Crusaders, as well as Sabbath School superintendent. Her favorite pastime is listening to records. With her fine abilities she will certainly reach her goal, which is to be an English teacher.

JOYCE, a fun loving girl, is one of our village students. She joined the freshman class four years ago. Her energetic ways have been known by all. Much success to her in her chosen career of being a beautician.

MAXINE EVELYN ANDERSON
St. Paul, Minnesota

JOYCE MARIE AMUNDSON
Hutchinson, Minnesota





MERRILL ELDON BARNHART
Wadena, Minnesota



ARLEN GLENN BERTHELSEN
Gatzke, Minnesota

Merrill, being one who is able to see the funny side of the situation, has won many friends during his 3 years' stay at MWA. His love and ability for organ and piano have led him to choose a career in the field of music.

Roger, rather quiet and mischievous, is a 2 year senior from Dexter. Work on the farm is a part of his program especially where electronics is concerned. His interest in this field is a good start toward a vocation in engineering.

Arlen, friendly and easy to get along with, has been with us at MWA for 4 years. He enjoys most sports and working with electronics. He plans to become an electronics engineer.

Nilan came to MWA four years ago from Hinckley, Minnesota. Her friendliness shines through in her work in the bindery. In the future she will be preparing herself for a career as a physical therapist.

ROGER FLOYD BOWIE
Dexter, Minnesota

NILAN ROBERTA BROWN
Hinckley, Minnesota





SANDRA FAYE BURR
Eagle Bend, Minnesota



RONALD LYLE DEREMER
Mapleton, Minnesota

Sandy came from Eagle Bend, Minnesota three years ago to join us as a sophomore. Since she likes to bake, she has proved herself a dependable worker in the kitchen. She plans someday to become a nurse.

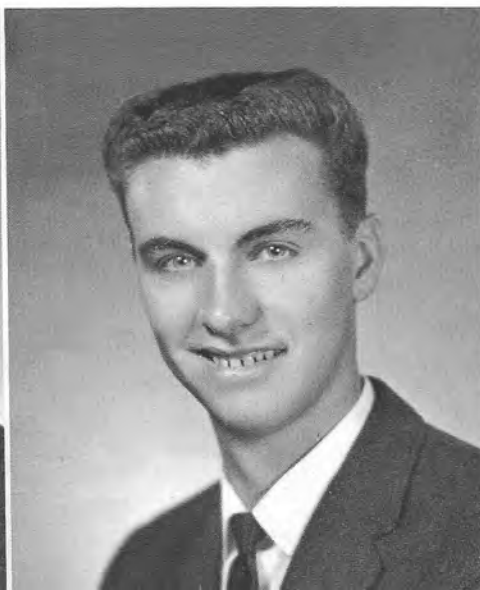
Howard's warm smile and friendly manner have been with us for 4 years at MWA. He has lived in Hutchinson, Minnesota, a good share of his life. Basketball rates high on his list of favorites. His ambition is undecided as yet.

Ron brought his quiet ways and his warm smile to brighten our campus just this year. Born in Mankato, Minnesota, he likes cars and basketball. In the future he hopes to be an electrical engineer.

Bob came to MWA 2 years ago from Pelican Rapids, Minnesota. He enjoys working on cars and fishing. Bob's pet peeve is "people who walk too slow." He plans to become a mechanic.



HOWARD NORMAN ELLSTROM
Hutchinson, Minnesota



ROBERT EDWARD ESTLICK
Pelican Rapids, Minnesota

LINDA MARILYN FARBO
Karlstad, Minnesota

DENNIS RAY FROEMMING
Hutchinson, Minnesota



With her relaxed and friendly manner, this petite young miss has in two years endeared herself to all. We wish LINDA much success in her ambition to become a nurse.

This cheerful senior has been a part of MWA for four years. If anything involving mischief and fun is afoot, EMILY is sure to be in the middle of it. She has been a real asset here with her musical abilities. We wish her success as she looks forward to service as a nurse.

DENNIS, friendly and easy to get along with, is one of our first year village students. He likes to do things in the out of doors, so he should feel at home in his chosen field of the forestry service.

DARLENE, lively and full of fun, has been the center of school spirit while she has been here with us. She came to MWA two years ago to join the junior class, of which she was vice-president. Her cheerful ways have been an inspiration to those who have known her. She will go far in her hope to be a nurse.

EMILY JEAN HAGEN
Gatzke, Minnesota

DARLENE FAYE HAMMERBACK
Minneapolis, Minnesota





LILA ELEANOR HENSEL
Heron Lake, Minnesota

JUDY ELAINE JOHNSON
Minneapolis, Minnesota

LILA came two years ago to join her class. She has proven to be a dependable worker. Among her favorites in the use of her spare time is playing the piano. Much success to her in her chosen career in the field of medicine.

JON has been at Maplewood for two years. His favorite pastime is to make things. Working in the craftshop is helping him prepare for his chosen work as a carpenter.

Her sweet smile and congenial manner have made JUDY respected and admired by all who know her. She enjoys working with children, but has not as yet decided on a career. We wish her well as she leaves Maplewood.

One of BARB'S main interests is interior decorating, and she has appropriately chosen this field of service as her lifework. We have enjoyed her friendship during her four years of residence here.

JON GEORGE LAMON
Minneapolis, Minnesota

BARBARA JEAN LARSEN
Morgan, Minnesota





LINDA MAE LARSON
Hutchinson, Minnesota



DAVID BYRON LIGHTHALL
Minneapolis, Minnesota

It is nice to be natural, when you are naturally nice. This characterizes LINDA who has been here for three years. She has been a loyal partaker in religious and social activities. She has been ASB president and spiritual vice-president of the girls' club. LINDA plans to take medicine in college.

Quiet and pleasant, LARRY is one of our village students living here in Hutchinson. He has attended MWA for four years and likes outdoor sports, such as swimming and water-skiing. We wish him success in whatever he plans to do.

Energetic and talented, DAVE has made his three years at Maplewood a success. He has been in Choraliers and also a Sabbath School secretary. We wish him success in his chosen field of social work.

A warm smile and a friendly greeting always accompanies this four-year senior. LOAH'S experience as a Sabbath School secretary will help her achieve her goal to become a secretary.

LARRY GENE LUSHANKO
Hutchinson, Minnesota

LOAH BETH MOE
Hutchinson, Minnesota





KERMIT LYOL NETTEBURG
Minneapolis, Minnesota



JON JEFFRY OLSON
Akeley, Minnesota

Two years ago, KERMIT came to MWA. Since then he has been very active in school life. His activities have included Crusader president, pastor of the boys' club, and business manager of the Maple Log. Any active sport rates high on his list of pastimes.

Cooperative, cheerful, companionable — all these describe HENRIETTA. Although home to her is Staples, Minnesota, we have been proud to claim her as one of the daughters of Maplewood for the past three years. We wish HENRI much success in her ambition to become a secretary.

This courteous senior came to MWA three years ago. JON makes friends easily because of his good nature. He enjoys boating and will be a success in all he does.

This year we welcome DUANE to MWA for the first time. He has that can't-be-copied style. With his interest in cars and machines, he plans to be an electrical engineer.



HENRIETTA LOU OPP
Staples, Minnesota

DUANE ALLEN PEREKRESTENKO
Minot, North Dakota

YVETTE SINCLAIR PETERSEN
Foley, Minnesota

LARRY ERWIN REED
Hancock, Minnesota



YVETTE, lively and full of fun, has attended MWA for four years. While here she has been treasurer of the girls' club and has been a member of the Student-Staff Council. Her experience in the secretarial department will help her fulfill her ambition to become a secretary.

This is TIMO'S first year in attendance at a high school or an academy. For his first three years, he received all his instruction from a correspondence institute. His cheerful smile and word always impart a feeling of welcome to those he meets. His likes in the field of politics and literature will help him in his chosen profession of political science.

Hard-working LARRY came to MWA two years ago. He has capably worked on the farm. His love for outdoor activities has more than likely prompted his efficient work. LARRY hopes someday to be a medical technologist.

JIM'S interest in others and his sincere desire to be of service have won him a place in the hearts of many. He has been the Maple Leaf editor as well as the boys' club president. His cheerful smile will help him in his plans to become a doctor.

TIMO RICHARD RIIPPA
New York Mills, Minnesota

JAMES ROBERT ROSENTHAL
Austin, Minnesota





JANET GAIL RUTHS
Minneapolis, Minnesota



DARLENE LEE TREFZ
Minneapolis, Minnesota

Lively JAN is always bubbling over with laughter and gets a thrill out of "just living." This mischievous senior has attended MWA for two years. To be a medical doctor is her professional career goal.

A friendly smile of recognition and a happy "Hi" are as much a part of LEROY as his ardent enthusiasm for working with cars. LEROY came here two years ago and plans to be a mechanical engineer.

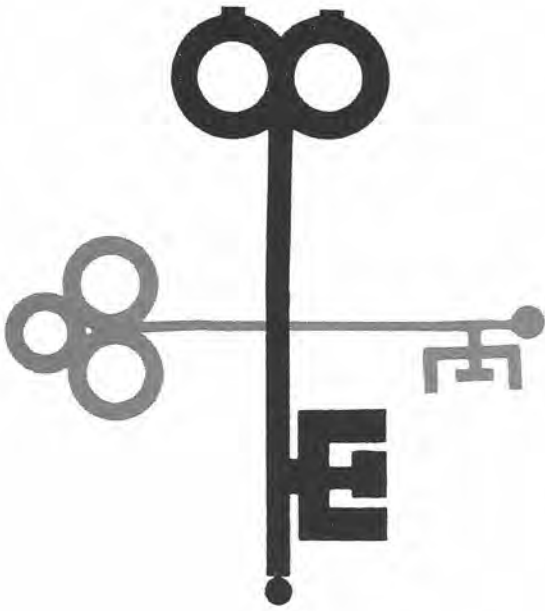
"Short 'n sweet, cute 'n neat" is the appropriate description of DARLENE. Three years ago she joined the MWA family, and has since then been vice-president of her sophomore class and ASB secretary. To be a secretary is her career goal.

HENRY joined our school family two years ago and has proven his capabilities by his work as a reader and his participation in school activities. He looks forward to serving others as a minister in God's work.

LEROY ALAN WOOD
Rochester, Minnesota

HENRY WILLIAM ZOLLBRECHT
Anoka, Minnesota





UNDERGRADUATES

This is the classroom, Maplewood Academy. Many students go to school here each day. It's my job to protect them. I'm a teacher. In this picture, we see Elaine Spangler passing a note to Merle Peterson. This note may contain vital information about the latest love affair, or some other serious matter. I had better check this out. Aha, they didn't think "Ole Teach" was watching. To make a long story short, the accused were found guilty of passing notes in the first degree. Really, if the truth were to be known, this is not the general run of things among the undergraduates. Diligent study is the rule all the way from the "green little freshmen" up to the juniors. (And maybe even the seniors, for that matter!). As these undergrads strive to scale the ladder of success, there is always a little bit of "horseplay" mixed in with their work, but what else can you expect from good, red-blooded American teenagers? Answer that one!!



Dave Albers
President

Sandy Bitzer
Vice-President

JUNIOR

Jerry Amundson
Ted Anderson



Alvin Hensel
Pastor



A. D. Holmes
Sponsor

Sandy Bellach

Coleen Bosanco





Joan Bromme
Secretary



Kathleen Swanson
Treasurer

CLASS



G. H. Wheeler
Sponsor



Patrick Logan
Sergeant-at-Arms

Harold Burgeson
Cheryl Chaffee



Ruby Boyington

Nancy Brown





Brenda Christensen



Roger Dickhaut



Melvin Eisele

Kenneth Ellstrom

Katherine Frye



Terry Guy

Richard Hancock

Richard Hebbel





James Johnson



Richard Lamon



Barbara Lingle



Robert Lonnstrom

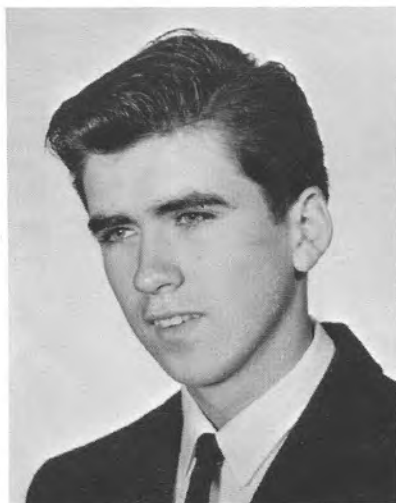


Cheryl Lund

Marnelle McNeilus

Terry Mandt

Thomas Misenko





Thomas Murphy



Karin Neergaard



Arlee Nelson

Grant Nelson

Jerry Nelson



Judy Nelson

Sharon Paladino

Tim Pederson





Kenneth Pierson



Barbara Roderick



Susan Sather



Elaine Spangler



Mary Swenson



James Wasmiller

Gary Waterhouse

Merry Weisner

Charles Wood





Gerry Hanson
Pastor



Linda Bitzer
Secretary



SOPHOMORE

Dorothy Benjaminsen
Gary Barnhart



Steven Bellach



David Bowers
President

Miss S. Julius
Sponsor

Kenneth Binder





Leta Hensel
Treasurer

David Johnson
Sergeant-at-Arms

CLASS



Roi-Ann Vail
Vice-President

G. G. McMillen
Sponsor

David Burghart
Robert Chilson



Martha Bosanco

Judy Burgeson





Patty Fankhanel

Keith Hagen

Linda Helland

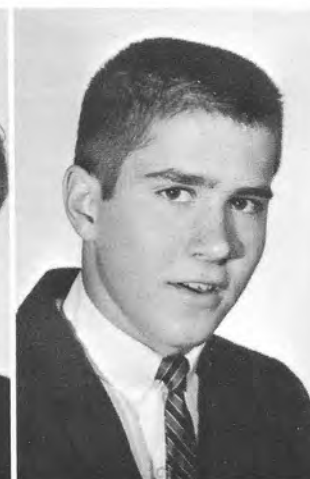


Vergil Dockham
Keith Ellstrom

S
O
P
H
O
M
O
R
E

Lois Kupcho
Virgil Larson

Charles Nash
Lester Neher



Jon Heib

Dan Johnson





Jim Olson



Judy Opp



Merle Peterson



Jerry Rosaasen
Janice Rosenthal

Glenn Sackett
Juanita Schauer

C
L
A
S
S



Sandee Pierson
Sue Prosser



Terry Verlo

Lynn Wixson



FRESHMAN



Tom Rosaasen
President



Sandra Horst
Secretary



Curtis Wiltse
Pastor



J. N. Noble
Sponsor



Sherrill Christensen
Doug Hamilton

Heather Beavon

Gary Burgeson

Sherry Burgeson



CLASS



June Erickson
Vice-President



Sandra Felton
Treasurer



Charles Andrews
Sergeant-at-Arms



D. J. Prest
Sponsor



George Harlan
Barb Hermanson

Relda Houghton

Billy Johnson

Eldon Johnson



FRESHMEN



Herluf Johnson



Ralph Kabrick



Gary McKellip



Linda Petersen

Wesley Quale

Lowell Rideout

Linda Spangler

Valerie Tackett





Mrs. Cecil Conquest
Grades 1-4

Elmer Merickel
Principal
Grades 5-8



ELEMENTARY SCHOOL



Nancy Amundson
Ronald Chaffee



Teresa Johnson
Edward Kelly



Glenda Felton
Barbara Noble



Penny Lushanko
Jean Wendroth



Kaylene Anderson
Yvonne Ellstrom



James Bitzer
Marla Kelly



Donovan Noble
Russell Peterson



Marilee Pierson
Richard Ellstrom



Joni Anderson
Rhonda Binder



Karen Zummach

Ronald Felton
Micheal Galbraith

Lee Larson
Mike Merickel



David Noble
Philip Binder



Jerry Bitzer
Heather Chaffee



Everett Binder
Julie Denler



Shelly Denler
Roger Ellstrom



Kathy Ellstrom
Rita Johnson



Lynette Groulik
Pat Kelly



Echo Merickel
Merry Lee Peterson



Spring LeSuer
Shirley Wendroth

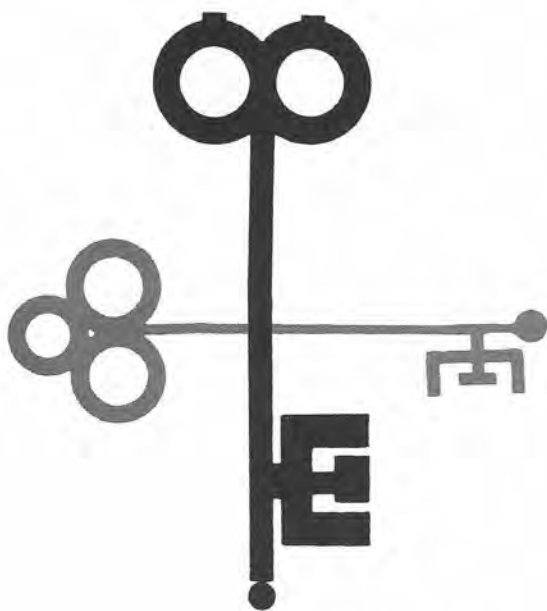


Ricky Peterson
Larry Holmes



Jewell Orr
Lynn Anderson





WORK DEPARTMENTS

Maplewood Academy offers the student many work opportunities to help defray his expenses while at MWA. The average student works approximately 20-25 hours per week, with the minimum wage being 85¢ per hour. Useful labor is as much a part of the education as is the scholastic program; therefore, Maplewood endeavors to give the student as much work as will fit into his program. This work gives the student a sense of responsibility, and prepares him for service in his later life. The picture shows Dave Lighthall at Siesta Time in the Craftshop. (Siesta Time according to him, anyway.) It would seem that if he doesn't get up in the very near future, Marvin Wendroth could very well make him America's next Astronaut. Oh, well, Dave always did want to see the world. All joking aside, though, the students take pride in doing their work well and thereby obtaining that sense of accomplishment which is so vital to their success.

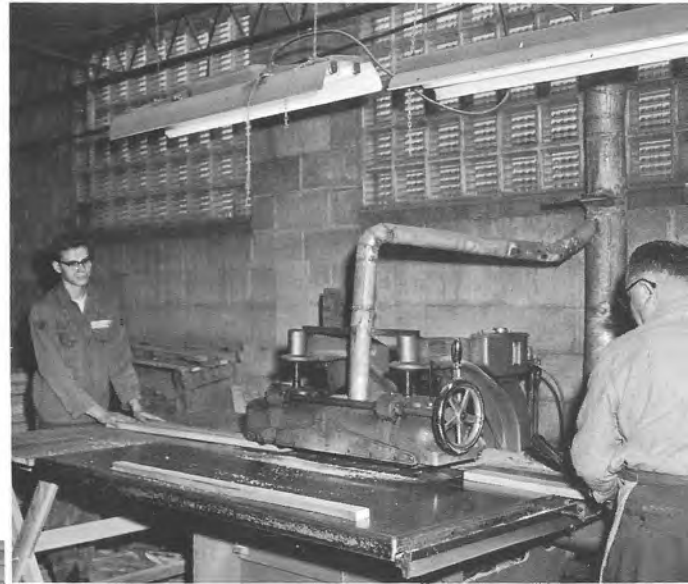




CRAFT SHOP

Cliff Borg and Arlen Berthelsen put the finish on an oak chair.

Upon entering the dormitories at MWA, you will at once see the quality workmanship of the Maplewood Craftshop, for most of the dorm furniture has been manufactured by this fine industry. Managing the Craftshop is Paul Zummach. Although he has been with this organization for six years, this is his first year as manager. The Craftshop manufactures redwood and oak furniture. The redwood furniture is the line of outdoor and lawn furnishings, while the oak furniture, which is made in Ranch Style, is primarily for the interior of the home. Whichever style you may choose, quality materials and quality workmanship will combine to give you the finest furniture available anywhere.



Duane Perekrestenko and Mr. Whittaker operate a saw in the millroom.



Paul Zummach explains an invoice to Karin Neergaard.

BOOKBINDERY

Mrs. Binder & Coleen Bosanco check in an order of books.



Mrs. Whittaker & Emily Hagen title the books with the stamping machines.

The Maplewood Bookbindery, which is under the able management of Ivan Groulik, provides many useful job opportunities for the student who wishes to work a good share of his way, and, at the same time, learn a useful trade. A book, before it is completed, passes through more than forty different processes. Each year the bindery rebinds approximately 75,000 volumes. When your books are checked out of the bindery, you can be assured that they will meet your highest expectations.

Ivan Groulik dictates a letter to his secretary, Darlene Trefz.



BUSINESS

O F F I C E



Miss Julius, our accountant, waits for Elder Noble to sign a check.



Pat Horst shows Kathy Swanson how to post checks from the check register to the student ledger.



Darlene Trefz purchasing a new book from Kermit Netteburg at our well supplied book store.



Mr. McMillen explains to Kathy Frye how to record class absences.

REGISTRAR'S OFFICE



Shirley Ritz keeps track of each student's transcript.

Chuck Andrews cleans Mr. Anderson's office.



MAIN HALL

Marnelle McNeilus keeps the Main Hall floor shining brightly.





Armed with her flashlight, Miss Bentley checks rooms during one of the "quieter" study periods.

WEST HALL

The monitors turn in their reports from the previous night to Miss Bentley.



The dorm floor takes a new look as Sandy Horst and Linda Spangler sweep and buff it.





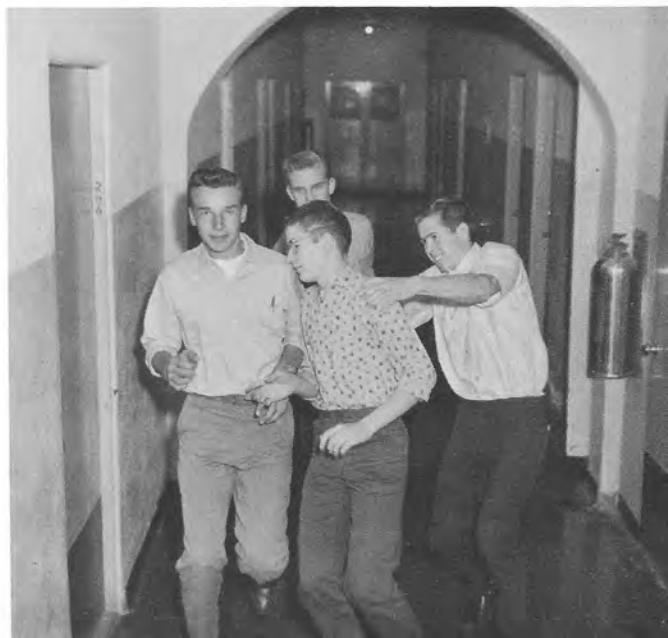
A "slight" commotion caused by Gary Waterhouse making merriment with his clarinet brings Mr. Uhrig on the run.

EAST HALL

Jerry Rosaasen, Tom Rosaasen, and Glenn Sackett keep the dorm spic n' span.



The faithful monitors "escort" 2 delinquent charges back to their rooms.





Gerry Hanson and Merry Weisner efficiently wash the dishes.

KITCHEN

Hungry students relish the thought of a good dinner as they leave the deck.



LAUNDRY

Nancy Brown and Lynn Wixson remove sheets from the laundry's new dryer.

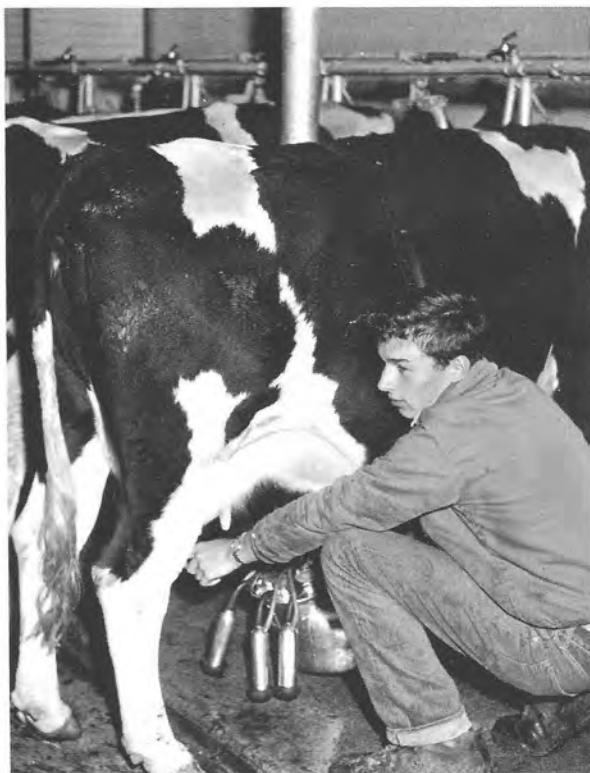


Barb Lingle and Joan Bromme give Ron DeRemer and Duane Perekrestenko their freshly laundered clothes.





Larry Reed drives one of the school's tractors.



One of Roger Bowie's chores is milking the cows.

FARM AND MAINTENANCE

Under the watchful eye of Mr. Schwab, Melvin Eisele, Kenneth Pierson, and Keith Hagen fire up the boiler.



Mr. Schwab explains to Gary Waterhouse and Tom Murphy how to install this sink in the new girls' dormitory.



Jim Rosenthal, Jim Wasemiller, Janet Ruths and Lois Kupcho set up an experiment.

READERS



Yvette Petersen, Pat Horst, Sue Prosser, Kermit Netteburg and Terry Guy, who grade papers for the various departments in Main Hall, look up information in the library.



Charlene Wiltse, Juanita Schauer, Brenda Christenson, Henry Zollbrecht and Judy Burgeson are kept busy doing their various jobs in the Bible office.



1. Larry, we don't play shuffle-board with a ping-pong ball. 2. Better get your flashlight, Elder Prest. 3. Tarzan. 4. Be careful, it may explode! 5. Don't startle me so! 6. Good morning, Madame. 7. The Maplewood Eskimos. 8. This may be a belly-flop. 9. Is it love? 10. Jim, the apples aren't *that* rotten! 11. Don't worry, these didn't pass. 12.

Careful, boys, you may get social-bound. 13. I didn't think it was that bad! 14. Jan calmly observes "La Cucaracha." 15. Lifeguard! 16. Even I can touch my toes. 17. Who are you looking for, Mr. McMillen? 18. You slept through breakfast again. 19. Coming up for air.



1. Sue, is the library work getting you down? 2. Zanes extinguishing our illuminators. 3. That apple must have been very sweet, indeed! 4. What are you doing out there at this time of night? 5. Would you like some Alka-Seltzer? 6. All ready for class, I presume? 7. "Why, you dirty rat!" 8. Hocus-Pocus. 9. "Take that! — and that! — and that!"

10. Look at the birdie! 11. Better move your hand, whoever you are. 12. Stay in your own picture, Hoss! 13. Hebbel, is it that heavy? 14. That's a sneaky way of uncapping the bottle. 15. Sleeping Beauty. 16. Chuck must be having a pleasant dream. 17. I just dare you!



JUDITH ELAINE ANDERSON

Fun-loving and cheerful describe this 4 year senior. Judi has been active in musical activities and has been treasurer of her freshman and sophomore classes. She also loves outdoor sports. She hopes to one day fulfill her ambition to become a secretary.



LINDA MEREL MOOTY

A warm smile and a friendly greeting always accompany this 3 year senior. Linda has been active in Crescit Eundo, and has held class office. She loves outdoor sports of any kind. She hopes to one day be an interior decorator.

SECOND SEMESTER STUDENTS

Elwin Klein, Bonita Berthelsen, Darold Nordvick



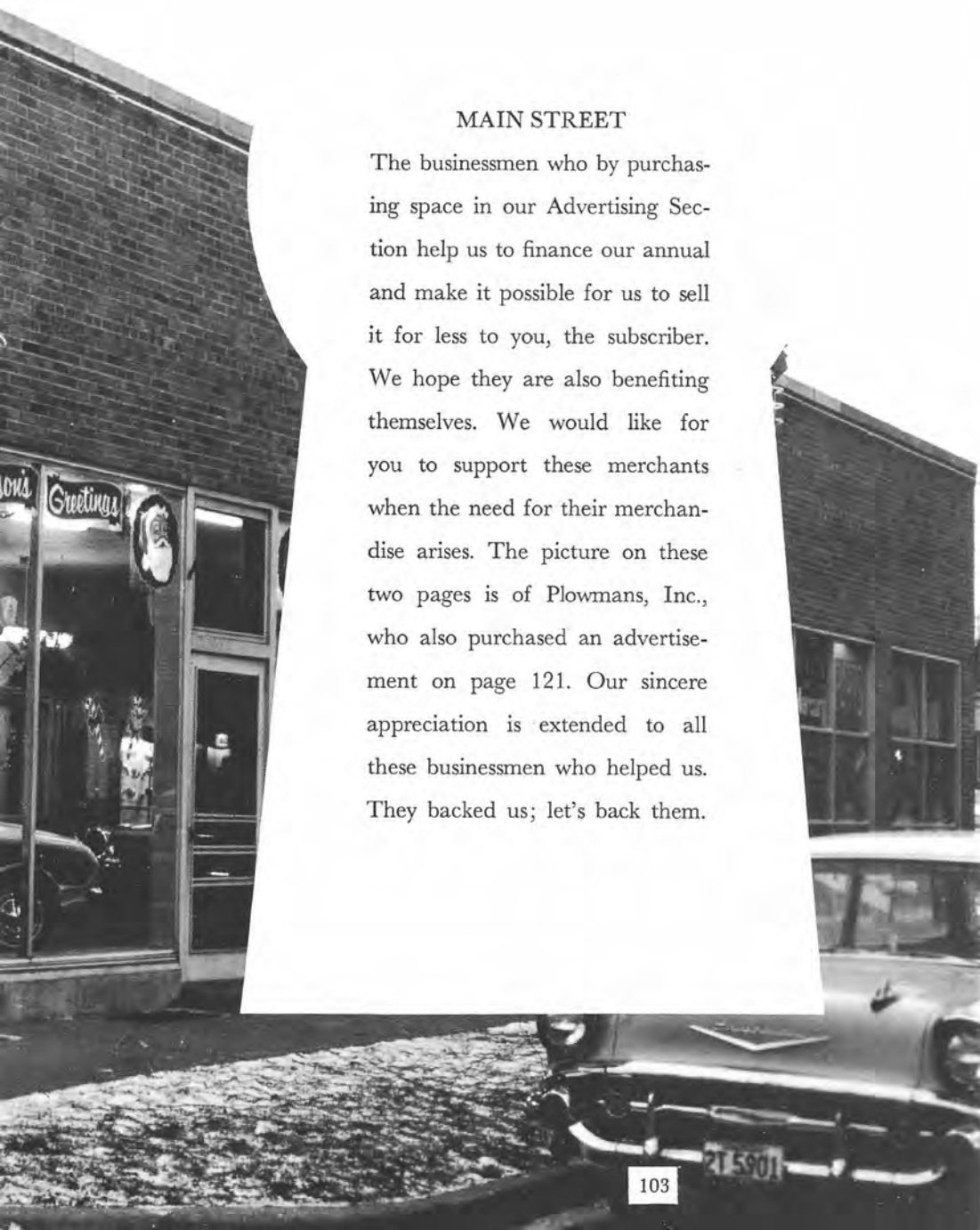
MAIN



S T R E E T

MAIN STREET

The businessmen who by purchasing space in our Advertising Section help us to finance our annual and make it possible for us to sell it for less to you, the subscriber. We hope they are also benefiting themselves. We would like for you to support these merchants when the need for their merchandise arises. The picture on these two pages is of Plowmans, Inc., who also purchased an advertisement on page 121. Our sincere appreciation is extended to all these businessmen who helped us. They backed us; let's back them.





*See
you
at*
UC

Union College



for information write

Registrar, Union College, Lincoln 6, Nebraska

Compliments of and Congratulations from
the staff of the

**NORTHERN
UNION CONFERENCE**
of Seventh-day Adventists



Iowa — Minnesota — South Dakota — North Dakota

LI-5-0471

400 No. Lilac Drive

Minneapolis 22, Minn.

MINNESOTA CONFERENCE OF SEVENTH-DAY ADVENTISTS



C. H. Lauda

President

R. G. Mote

Secretary-

Treasurer



“For All Your Spiritual Needs”

MINNESOTA BOOK & BIBLE HOUSE

Gifts Are Always Appropriate Gifts —
For Yourself or For Someone Else

G. L. Swanson

Manager

NELSON'S

**Super "66" Service
Station**

Home of Hutchinson's only

Taxi Service

Dial 897-6555

Hutchinson

SIMONSON LUMBER

Come to Us for

All Your Building Needs

1st & Bluff St.

Dial — 896-6175

Hutchinson



HEIL AND DOUGLASS
"Your Friend for Health"



ERICKSON

OIL

PRODUCTS

FAST FRIENDLY SERVICE

11 4th Ave. No.

Hutchinson



**JOHNSON SUPER
VALU**

Your Friendly Food Store

Dial — 896-6275

305 So. Main

Hutchinson

**HOFFMAN
Plumbing
and
Heating**

Where:



Dial 896-6105

222 Second Ave. S.E.

Hutchinson

Minn.

SENIORS OF '63

Be Forewarned:

The road to success is
not all strewn
with roses

There is much
hard work between
you and success

Much Luck to You In Your Efforts

A Business Friend



Flowers Are Always
Appropriate; At Least

Flowers
From
Carr
Always
Are



CARR FLOWERS

896-3542

Hutchinson

Your Bedding

Accessory Headquarters

BECHIK PRODUCTS

MI-5-3428

650 Eustis St.

St. Paul, Minnesota

Everything for
the Farmer's Needs

ALT MEYER
Farm Service

896-4035

Hutchinson



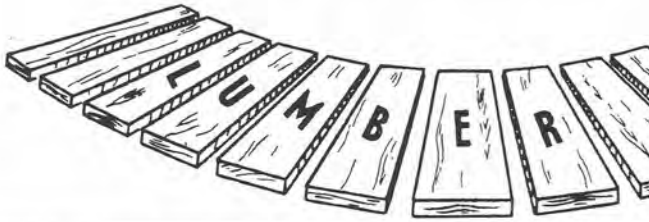
Large or Small
We Fix Them All

PETERSON
TRUCK SERVICE

Third Ave. N.W.

Hutchinson

TOWNSEND-ROBERTSON



In a Fix?
For the Finest
In Offset and
Letterpress Printing

STANDARD PRINTING

Vern Pribyl, Owner

**Quality
Color Work,
Too**

Dial: 896-4505

Hutchinson

Minnesota

Quality Is Our Only
Criteria

Phone: BRoadway-2-2800

126 No. Jefferson St.

Milwaukee 2, Wisconsin

For a Wholesome Treat

Stop at the Dairy Queen Down the Street



DAIRY QUEEN

Main & 1st St.

897-4145

Hutchinson, Minnesota

The First National Bank

OF HUTCHINSON



Where

Friendliness

Prevails

306 So. Main

Hutchinson, Minnesota

Fair Oaks

CONVALESCENT and
NURSING HOME

321 East 25th Street — Minneapolis

CONVENIENT CENTRAL

LOCATION CLOSE TO

CITY HOSPITALS



A COMMUNITY SERVICE

A new concept in the care of the aged, the chronically ill or convalescing patient is available in new, modern, fireproof, scientifically planned nursing homes. The new "Fair Oaks," affiliated with Homestead Nursing Home in Minneapolis, fills every need where costly hospitalization is not required. The patient is a guest in bright, cheerful surroundings, with the full advantages of 24-hour attention from registered, vocational and practical nurses. Our motto is: "Recovery for the convalescent patient, active contentment for the elderly. GIVE YOUR LOVED ONES THE BEST."

ADMINISTRATOR —

John W. Hebbel

DIRECTOR OF NURSING SERVICES —

Josephine Ellsworth, R.N.

OTHER FEATURES INCLUDE: Electronic Voice Communication between patient's room and nursing station — soothing background music throughout — Simmons adjustable power or manual operated hospital beds for patients' comfort and efficient nursing care — Free-standing bathtubs with hydraulic lifts — a quiet, restful Chapel available to all faiths, for services or meditation.

NORTHSIDE

GROCERY

The Students

Favorite Store

578 Prospect



There's Less Risk at

Gambles

The Friendly Store

25 No. Main

Dial — 896-6945



Sales

&

Service

MOEHRING MOTORS

Buick — Oldsmobile — Pontiac

145 E. Washington Ave.

Hutchinson

Homestead Nursing Home

1800 First Avenue South
Minneapolis 3, Minnesota
Phone: FEderal 9-1457

Owned and Operated by Seventh-Day Adventists
J. W. Pierce, L. E. Thayer, E. E. Perry
John W. Hebbel, Administrator
A. Bustamante, R. N., Director of Nurses



183-Bed Capacity
24-Hour Professional Nursing Care
Complete Physical Therapy Department
D. Sexe, Registered Therapist
Completely Fireproof
Elevators
Health Foods Available

Applications accepted by mail
or phone for admittance or
employment.

R.N.'s

L.P.N.'s

Aids

Kitchen and Maintenance

MINNESOTA - WISCONSIN

TRUCK LINES, INC.

2711 Fairview Ave. No.
St. Paul 13, Minn.

You

Tell

Us

Where

We'll

Move

It

There

BRUNBERG

SORENSEN & OLESON
OIL COMPANY

Farm and Home
Bulk Delivery Specialists

896-1955

305 Bluff St.

Hutchinson

When You Want
Something Refreshing



SUN-LITE DAIRY

896-2302

225 Washington Ave. E.

Hutchinson

Hutchinson's Prescription Specialists

Since 1894

POPP

Rexall

DRUG



Full Photo Finishing Service

Dial: 896-5445

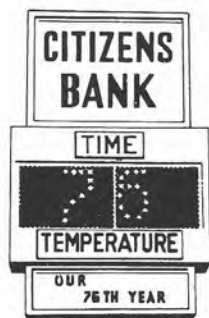
2 So. Main St.

Hutchinson

Friendly Banking Service Always

at

CITIZEN'S BANK



Stop

Where You See

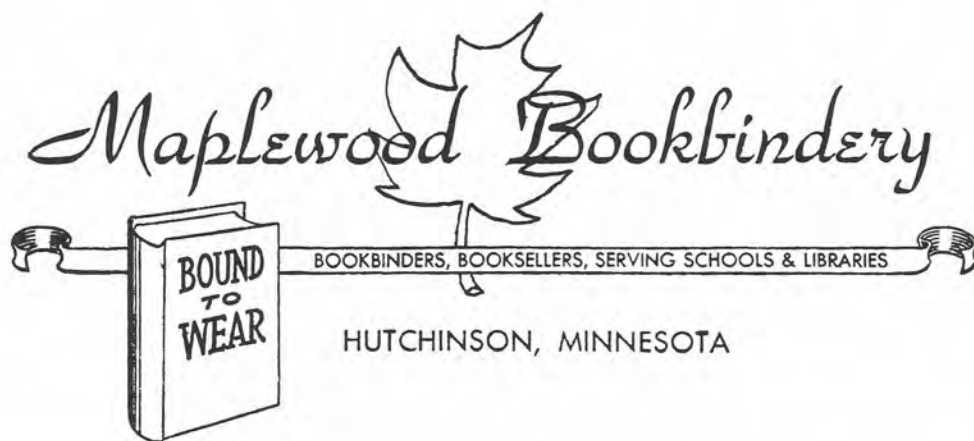
The Time & Temperature

Flash

Dial: 896-1815

120 So. Main St.

Hutchinson



The place
for Speed
and
Quality
in Binding
Workmanship



VANDY-CRAFT AND THE MAPLEWOOD CRAFTSHOP



Casual Oak Furniture

Redwood Lawn
Furniture



Come to the
Merchandise
Mart
In Chicago
Illinois

or to
Maplewood Academy
Hutchinson
Minnesota



DEVOE & REYNOLDS



If you are building — remodeling — or redecorating

Call on Us

Paints — Brushes — Wallpaper — Varnishes

TAylor-2-3189

900 West Lake Street

Minneapolis 8, Minnesota

Spencer's Shoes



Your Family Shoe Store

Complete, Quality Shoe Care

10 So. Main St.

Hutchinson

PETERSON BARBER SHOP

"Where You Meet
Your Friends"

Use Our Exclusive Appointment Service

Call Hutchinson — 897-1505

F. W. WOOLWORTH CO.

Your Money Is Worth More

at a Woolworth's Store

Since 1879

215 So. Main St.

Hutchinson

A
L
R
I
C
K'
S

"Clothes Make the Man"

So Come to

Alrick's for

Fine Men's Wear

Phone: 897-1195

114 So. Main St.



Hutchinson

QUAST'S FURNITURE STORE

Your Furniture Headquarters

in Hutchinson

Dial — 896 6565

137-139 So. Main St.

Hutchinson

HOME BAKERY

Fresh Pastries, Cookies

Rolls and Bread

8 No. Main Street

Phone: 896-2145

Hutchinson

CORSON'S STORE

Finest Quality Clothing

Ready-to-Wear

Out of the Store

Dial: 896-3605

40 So. Main

Hutchinson

R. E. TORGERSON CO.

Central Minnesota's

Leading Store for Men and Boys

16 No. Main Street

Dial 896-3635

Hutchinson

OKEN'S, INCORPORATED

We Now Sell

Restaurant Equipment

1011 Washington Ave.

Institutional

Wholesale

Grocers

Minneapolis, Minn.



1. You bend backward to Limbo, Timo. 2. Must you always take my picture? 3. Yeah, It's WATER. 4. Sneaking out to see Horse, Alvin? 5. Hoss making sure to get enough in bread line. 6. Hoss wants some Alka-Seltzer. 7. I'm the valedictorian!! 8. Watch out for the pigeons, Miss Julius.

9. Reverse room check in five minutes, Maxine. 10. So you don't think I'd hit you, eh? 11. How can you sleep with Hoss bellowing just above you, Jerry? 12. Hope I can get in here before Trefz gets my picture. 13. Spring closet-cleaning time. 14. I want to go sliding in the snow.

This page was made possible through the courtesy of
For the Finest in Chocolates
JANE GARROTT

Highest Quality Since 1879

THE TYPEWRITER SHOP

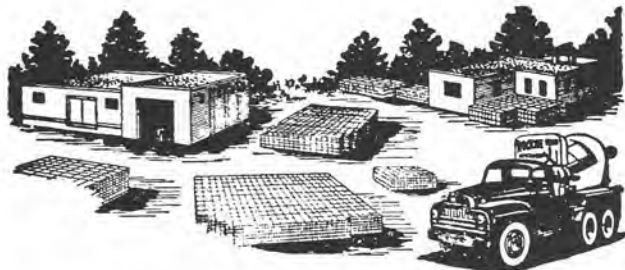
Where you can now
get all kinds of
business machines



We
Still
Service
Too.

1510 Saint Germain St.

Saint Cloud, Minn.



**ROCKITE SILO, INC.,
HUTCHINSON, MINN.**

**THE MODERN CONCRETE
MANUFACTURING PLANT**

silos — ready mix — blocks — tile
corn cribs



HILLCREST NURSING HOME



Expert Professional Nursing Care

MR. and MRS. WILLIAM LAUER

Mgrs.

WAYZATA

MINNESOTA

**FISCHER'S
NEW
BAKERY**



Wedding Cakes
Variety Breads
Pastries
Cookies

111 South Main Street

Call: 897-1475

Hutchinson

**NORTHWESTERN-HANNA
FUEL CO.**



To Keep Your
Home Fires
Burning

816 2nd Avenue South

Minneapolis 2, Minnesota

MYRON WIGEN



New or Used Cars or Trucks

"Where You Buy with Confidence"

25—1st Avenue S.W.

Phone — 896-2765

Hutchinson

NEMITZ' SONS

Arthur J. Benjaminson, Prop.

Paints

Wallpaper

Glass

Your Friendly Home-town Dealer

35—1st Avenue S.W.

Hutchinson

DOWNTOWN

Station:
897-0025

E. C. Rix,
Manager



Bulk:
897-3285

Hutchinson

104 No. Main

**COAST-TO-COAST
STORES**

Fast, Friendly Service

For All Your Hardware Needs

Dial: 897-7885

14 No. Main

Hutchinson

"FOR THE BEST

PLOWMAN



Complete Collision

Service

Free Estimates

Ford — Falcon —

Mercury — Comet —

Ford Trucks

Sales & Service

Dial: 896-5975

2nd Avenue So. & Hassan Street

Hutchinson



Specialists in Wood
Stabilizers and
Preservatives

776 Leonard St. N.E.

Grand Rapids, Mich.

WYLIE'S TEXACO

Personalized Care for Your Car

CARLY'S SHOES

Quality Shoes for the Family

DAVE'S VARIETY

Your Home-owned Variety Store



1. Joy unconfined. 2. Do I look more like Liberace this way? 3. Was it good, Sue? 4. Genuine 2nd floor moonshine. 5. Beautiful pose, Doll-Face. 6. Sleeping beauty (modern). 7. Mr. Holmes caught without a wisecrack. 8. Me Tarzan,

you Jane? 9. I swear to tell the truth, the whole truth . . . 10. The bookstore is getting Dave down. 11. Trying to twist, Hermie? 12. Barney's fly trap. 13. "I'll retire to bedlam." 14. Oh, no, this is the end.

This page is sponsored by - - -

JACOBSON FLOORS, INC.

Complete Floor Service

For the Finished Look Only a Professional Floor Job Gives

Call on US

We'll Go Anywhere

TAylor-5-0538

LASALLE CLEANERS



We Specialize in

Shirt Care

Our Custom Care

Lengthens Fabric Wear

Freshens Fabrics

Dial 897-4555

Hutchinson

C. H. STOCKING

Machine Shop Power Tools — Machine
Work — Sporting Goods — Wisconsin Air-
Cooled Engines — Delta Power Tools —
South Bend Lathers — Electric Motors —
Electrical Appliances — Motor Rewinding

Hutchinson

Minnesota

THE ROMPSTER SHOP

Women's — Children's — Infants'

Ready-to-Wear Clothes

Phone 896-4541

Hutchinson

"Say

It

With

Flowers"

From



GLENCOE GREENHOUSE

Paul Fankhanel, Prop.

Glencoe

Minnesota

“There’s more in the

Store

for

“You”

at



LLOYD'S RED OWL



When You Need Printing Supplies, You Look
to:



Complete
Printer's
Outfitters

PRINTERS SUPPLY COMPANY

306 So. Sixth Street

Minneapolis 15, Minnesota

ROSTER

Albers, David 211 North 6 St., Wahpeton, North Dakota 72
Amundson, Jerry, R. R. #2, Hutchinson 72
Amundson, Joyce, R. R. #2, Hutchinson 61
Anderson, Judith, 307 W. 15th St. Apt. 10, Minneapolis 101
Anderson, Maxine, 3300 Demontreville Road, St. Paul 9 . 61
Anderson, Ted, 6 Northwoods Ave., Hutchinson 72
Andrews, Charles, Hudson, South Dakota 83
Barnhart, Gary, 301 East 8th Ave., Alexandria 78
Barnhart, Merrill, 222 N. W. 1st St., Wadena 62
Beavon, Heather, 6548 Cawolth, Langley, British Col.,
CANADA 82
Bellach, Sandra, 5307 St. Stephen's St., New Brighton .. 72
Bellach, Steven, 5307 St. Stephen's St., New Brighton .. 78
Benjaminsen, Dorothy, 1649 Mankato Ave., Winona ... 78
Berthelsen, Arlen, Middle River 62
Berthelsen, Bonita, Middle River 101
Binder, Kenneth, Maplewood Academy, Hutchinson ... 78

Bitzer, Linda, 860 Elm Street, Hutchinson 78
Bitzer, Sandra, 860 Elm Street, Hutchinson 72
Bosanco, Coleen, Dodge Center 72
Bosanco, Martha, Dodge Center 79
Bowers, David, 806 S. W. 1st St., Rochester 78
Bowie, Roger, Dexter 62
Boyington, Ruby, Route #1, Vergas 73
Bromme, Joan, 815 West Blvd., Duluth 73
Brown, Nancy, R. R. #3, Hinckley 73
Brown, Nilan, R. R. #3, Hinckley 62
Burgeson, Gary, 518 Devonshire St., Glenwood 82
Burgeson, Harold, Route #4, Box 119, Little Falls 73
Burgeson, Judith, 225 W. 15th Street, Minneapolis 79
Burgeson, Sherry, 17 Kingwood, Brainerd 82
Burghart, David, Sleepy Eye 79
Burr, Sandra, R. R. #1, Eagle Bend 63
Chaffee, Cheryl, 715 North Main, Hutchinson 73

Chilson, Robert, Route #1, Byron	79	Moe, Loah, 151 N. E. 5th Ave., Hutchinson	66
Christensen, Brenda, R. R. #1, Box 120, Pipestone	74	Mooty, Linda, 6421 No. 57th Ave., Minneapolis	101
Christensen, Sherrill, 815 Elm Street, Hutchinson	82	Murphy, Thomas, 2240 Dellwood St., St. Paul 13	76
DeRemer, Ronald, Mapleton	63	Nash, Charles, 839 No. 2nd St., Wahpeton, North Dakota	80
Dickhaut, Roger, Tintah	74	Neergaard, Karin, 705 C Kinds View Lane, Minneapolis	76
Dockham, Vergil, Route #1, Eagle Bend	80	27	76
Eisele, Melvin, Williams	74	Neher, Lester, Route #5, Brainerd	80
Ellstrom, Howard, Route #1, Hutchinson	63	Nelson, Arlee, Box 66, Thief River Falls	76
Ellstrom, Keith, Route #1, Hutchinson	80	Nelson, Grant, 4425 So. 18th Ave., Minneapolis	76
Ellstrom, Kenneth, Route #1, Hutchinson	74	Nelson, Jerry, Route 1, Clear Lake, Wisconsin	76
Erickson, June, Thief River Falls	83	Nelson, Judy, Route 1, Clear Lake, Wisconsin	76
Estlick, Robert, Pelican Rapids	63	Nelson, Ronald, Box 66, Thief River Falls	60
Fankhanel, Patty, 2124 E. 10th St., Glencoe	80	Netteburg, Kermit, 355 Clover Lane, Minneapolis 22 ...	67
Farbo, Linda, Route #1, Box 35, Karlstad	64	Nordvick, Darold, Gryglo	101
Felton, Sandra, 850 Oak Street, Hutchinson	83	Olson, James, Akeley	81
Froemming, Dennis, Route #3, Hutchinson	64	Olson, Jon, Akeley	67
Frye, Katherine, 200 Drestview Drive, St. Paul	74	Opp, Henrietta, Route #1, Staples	67
Guy, Terry, New London	74	Opp, Judy, Route #1, Staples	81
Hagen, Emily, Gatzke	64	Paladino, Sharon, 2249 Carver Ave., St. Paul 19	76
Hagen, Keith, Gatzke	80	Pederson, Timothy, 408 No. 6 St., Wahpeton, North Dakota	76
Hamilton, Douglas, Box 165, Atwater	82	Perekrestenko, Duane, 112 N. W. 4th St., Minot, No. Dakota	67
Hammerback, Darlene, 3041 Colfax Ave., So., Minneapolis 8	64	Petersen, Linda, Foley	84
Hancock, Richard, 901 So., 19th St., Fargo, North Dakota	74	Petersen, Yvette, Foley	68
Hanson, Gerry, P. O. Box 289, Brainerd	78	Peterson, Merle, Route 3, Hutchinson	81
Harlan, George, 1615 Scheffer Ave., St. Paul	83	Pierson, Kenneth, Route #2, Greenbush	77
Hebbel, Richard, 497 Rice Creek Terr., Minneapolis ...	74	Pierson, Sandra, 524 Clark, Hutchinson	81
Helland, Linda, 13826 La Pat St., Westminster, California	80	Prosser, Sue, Box 7, Northome	81
Hensel, Alvin, 3425 No. 6th Ave., Souix Falls, South Dakota	72	Quale, Wesley, Box 221, Grand Forks, North Dakota ..	84
Hensel, Leta, 3425 No. 6th Ave., Sioux Falls, South Dakota	79	Reed, Larry, Hancock	68
Hensel, Lila, Heron Lake	65	Rideout, Lowell, Route 6, Brainerd	84
Hermanson, Barbara, R. F. D. #1, Mabel	83	Riippa, Timo, P. O. Box 267, New York Mills	68
Hieb, Jon, Cleveland, North Dakota	80	Ritz, Shirley, 7415 Aldrich Ave. So., Minneapolis 23 ...	61
Horst, Patricia, 1231 S. W. 2nd St., Rochester	61	Roderick, Barbara, Route 2, Box 139-L, Wayzata	77
Horst, Sandra, 1231 S. W. 2nd St., Rochester	82	Rosaasen, Jerry, Box 63, Renville	81
Houghton, Relda, 401 N. E. 4th St., Kasson	83	Rosaasen, Robert, Box 63, Renville	60
Johnson, Billy, 615 Elm St., Hutchinson	83	Rosaasen, Thomas, Box 63, Renville	82
Johnson, Daniel, Route 2, Brownton	80	Rosenthal, James, 908 S. W. 2nd Ave., Austin	68
Johnson, David, Stewart	79	Rosenthal, Janice, 908 S. W. 2nd Ave., Austin	81
Johnson, Eldon, R. F. D., Wilton	83	Ruths, Janet, 1935 Brunswick Ave. No., Minneapolis ..	69
Johnson, Herluf, Route 2, Brownton	84	Sackett, Glenn, 1730 E. Main St., Mankato	81
Johnson, James, Route #6, Brainerd	75	Sather, Susan, Box 205, Hayward, Wisconsin	77
Johnson, Judy, 2206 No. 55th Ave., Minneapolis	65	Schauer, Juanita, Route #3, Box 320, Rochester	81
Kabrick, Ralph, 703 E. 7th St., Spencer, Iowa	84	Spangler, Elaine, Route #1, Bemidji	77
Klein, Elwin, 2106 Tongass Ave., Ketchikan, Alaska ..	101	Spangler, Linda, Route #1, Bemidji	84
Kupcho, Lois, Northome	80	Swanson, Kathleen, Route 3, Box 259, Wayzata	73
Lamon, Jon, 717 Lowry Ave. N. E., Minneapolis	65	Swenson, Mary, 205 W. Vasa, Fergus Falls	73
Lamon, Richard, 717 Lowry Ave. N. E., Minneapolis ..	75	Tackett, Valerie, 1711 Casselman St., Sioux City, Iowa ..	84
Larsen, Barbara, R. R. 1, Morgan	65	Trefz, Darlene, 3056 Hampshire Ave., Minneapolis ...	69
Larson, Linda, Maplewood Academy, Hutchinson	66	Vail, Roi-Ann, 308 Dale St., Hutchinson	79
Larson, Virgil, Solway	80	Verlo, Terry, 105 N. W. 5th Ave., Hutchinson	81
Lighthall, David, 2200 No. 55th Ave., Minneapolis ...	66	Wasemiller, James, R. R. 3, Wahpeton, North Dakota ..	77
Lingle, Barbara, 1177 E. St. So., Redwood Falls	75	Waterhouse, Gary, 113 Chevy Chase Drive, Wayzata ..	77
Logan, Patrick, 23 Los Lomas Dr., Watsonville, California	73	Weisner, Merry, Hutchinson	77
Lonnstrom, Roger, Route 1, Box 47, Zim	75	Wiltse, Charlene, 715 So. 2nd St., Wahpeton, North Dakota	60
Lund, Cheryl, Box 39, Route 1, Correll	75	Wiltse, Curtis, 715 So. 2nd St., Wahpeton, North Dakota	82
Lushanko, Larry, 106 Griffin, Hutchinson	66	Wixson, Lynn, Route #2, Box 372, Newport	81
McKellip, Gary, 1508 W. 15th St., Hastings	84	Wood, Charles, 1232 S. W. 1st St., Rochester	77
McNeilus, Marnelle, Dodge Center	75	Wood, LeRoy, 1232 S. W. 1st St., Rochester	69
Mandt, Terry, 423 Garwood, St. Paul Park	75	Zanes, Newton III, 5001 Churchill, Las Vegas, Nevada ..	60
Misenko, Thomas, 1215 N. W. 13th Ave., Rochester ...	75	Zollbrecht, Henry, 844 Oakwood Drive, Anoka	69

Getting out this yearbook is no picnic,
If we print jokes, people say we are silly;
If we don't, people say we are serious.
If we clip from other books,
We are too lazy to write it ourselves;
If we don't we are stuck on our own stuff.
If we stick to the job all day,
We ought to be out hunting pictures;
If we get out and hustle,
We ought to be putting first things first.
If we don't print contributions
We don't appreciate true genius;
If we do, the book is filled with junk.
If we make a change in a fellow's write up,
We are too critical,
If we don't, we are asleep.
Now, like as not, someone will say,
We swiped this from some other book —
And we did!

— So What?





autographs





